

RMV-760D-MTCP Quick Start



For RMV-760D-MTCP

English/ Jan. 2016/ Version 2.0

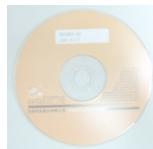


What's in the shipping package?

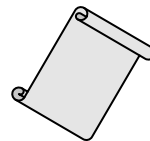
The package includes the following items:



RMV-760D-MTCP



CD



**Quick Start
(This Document)**



Screw Driver



ANT-124-05



CA-0910



Installing Software on your PC



Install RMV-760D-MTCP Utility:

usbcd:\ napdos\rmv-760d-mtcp\software\rmv760dmtcp_v20.exe

3 Connecting the Power and PC

1. Make sure your PC has workable network settings.
2. Check Init/Normal DIP switch if it is on **Normal** position (Figure 3-1).

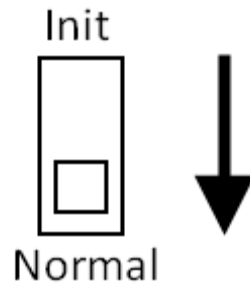


Figure 3-1 Mode Switch

3. Connect both the RMV-760D-MTCP and your computer to the same sub network or the same Ethernet switch, and power the RMV-760D-MTCP on. Please refer to figure 3-2.

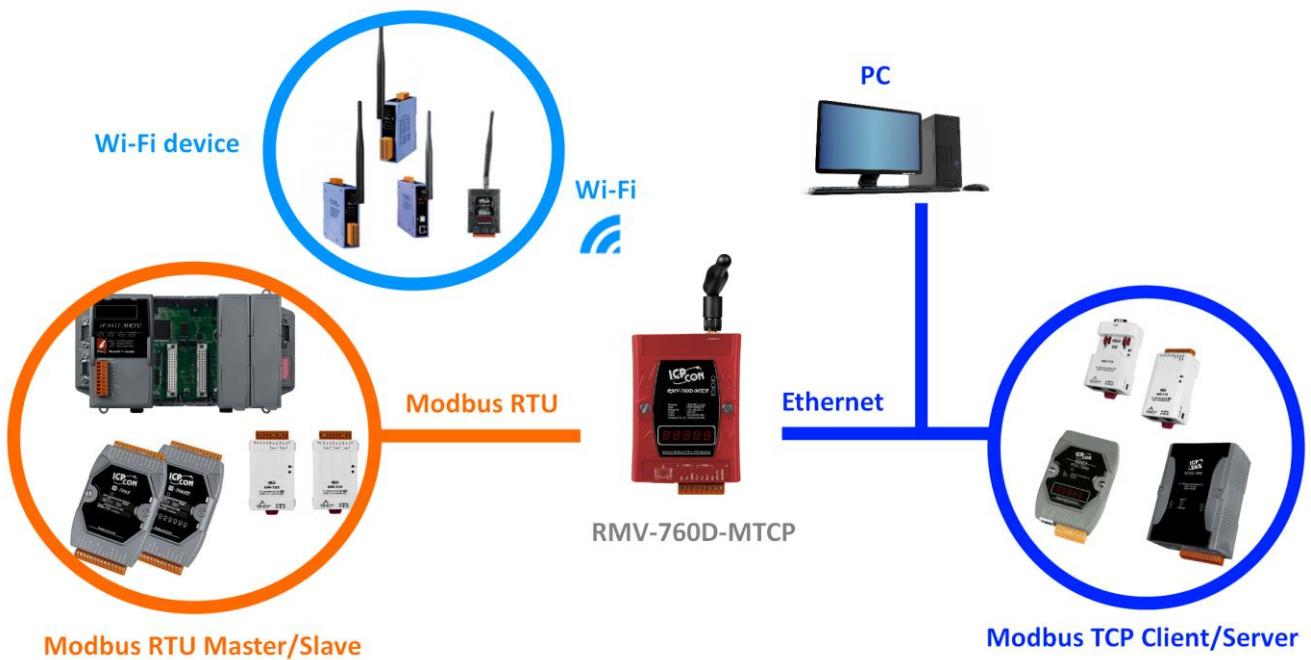
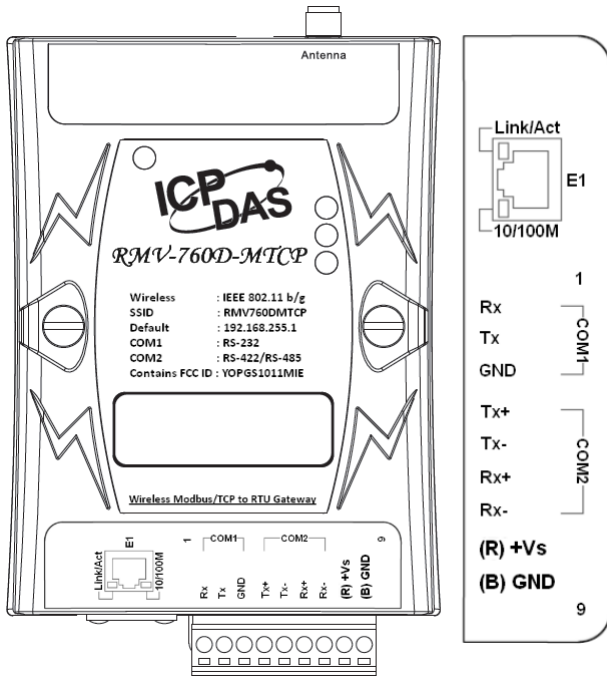


Figure 3-2 RMV-760D-MTCP module installation

4. Wire Connection



Pin	Name	Description
1	Rx	Rx of RS-232
2	Tx	Tx of RS-232
3	GND	GND of RS-232
4	Tx+	Tx+ of RS-422 / D+ of RS-485
5	Tx-	Tx- of RS-422 / D- of RS-485
6	Rx+	Rx- of RS-422
7	Rx-	Rx- of RS-422
8	(R)+Vs	V+ of Power Supply (+10~+30 VDC)
9	(B)GND	GND of Power Supply

4 Using the RMV-760D-MTCP Utility

1. Run the “RMV-760D-MTCP” Utility.

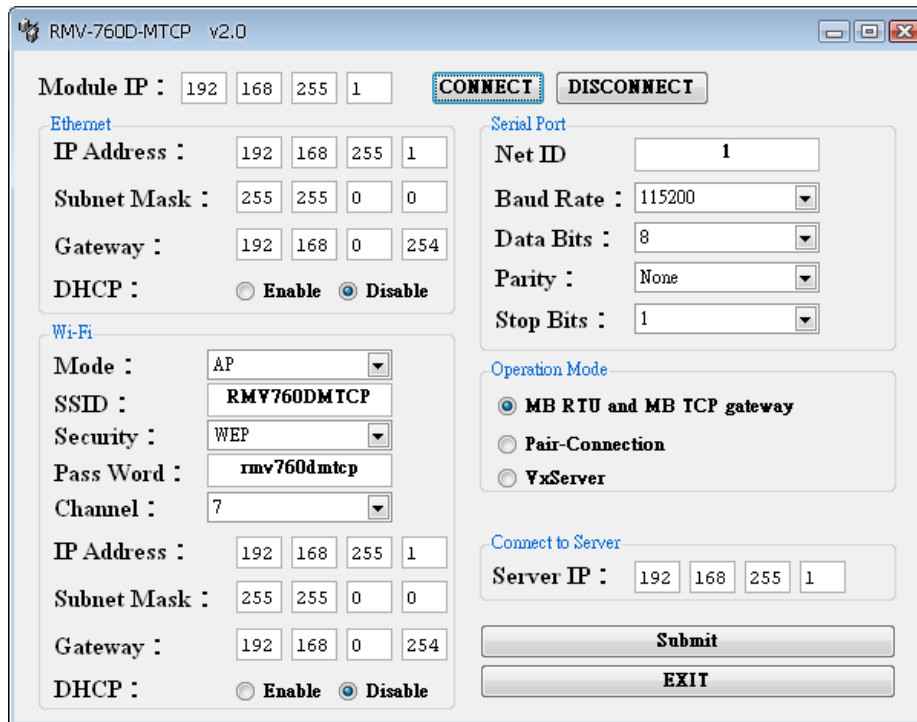


Figure4-1. RMV-760D-MTCP Utility

- Click the “Connect” button to connect your RMV-760D-MTCP(Figure 4-1).

Server IP :

Figure4-2. Utility “Connect” button

- Configure Ethernet, Wi-Fi and Serial Port settings.

Ethernet
 IP Address :
 Subnet Mask :
 Gateway :
 DHCP : Enable Disable

Serial Port
 Baud Rate :
 Data Bits :
 Parity :
 Stop Bits :

Wi-Fi
 Mode :
 SSID :
 Security :
 Pass Word :
 Channel :

Figure4-3. Communication settings.

- Default Configurations

Table 4-1 Default Settings

Ethernet	
Item	Settings (default)
IP	192.168.255.1
Gateway	192.168.0.1
Mask	255.255.0.0
Wi-Fi	
Mode	Ad-Hoc
SSID	RMV760DMTCP
Security	WEP
Pass Word	rmv760dmtcp
Channel	6
Serial Port	
Baud Rate	115200
Data Bits	8
Parity	None
Stop Bits	1

- Select the operation mode

Operation Mode
 MB RTU and MB TCP gateway
 Pair-Connection
 YxServer

Figure4-4. Operation Mode

- i. MB RTU Slave to MB TCP Client and MB TCP Server to MB RTU Master

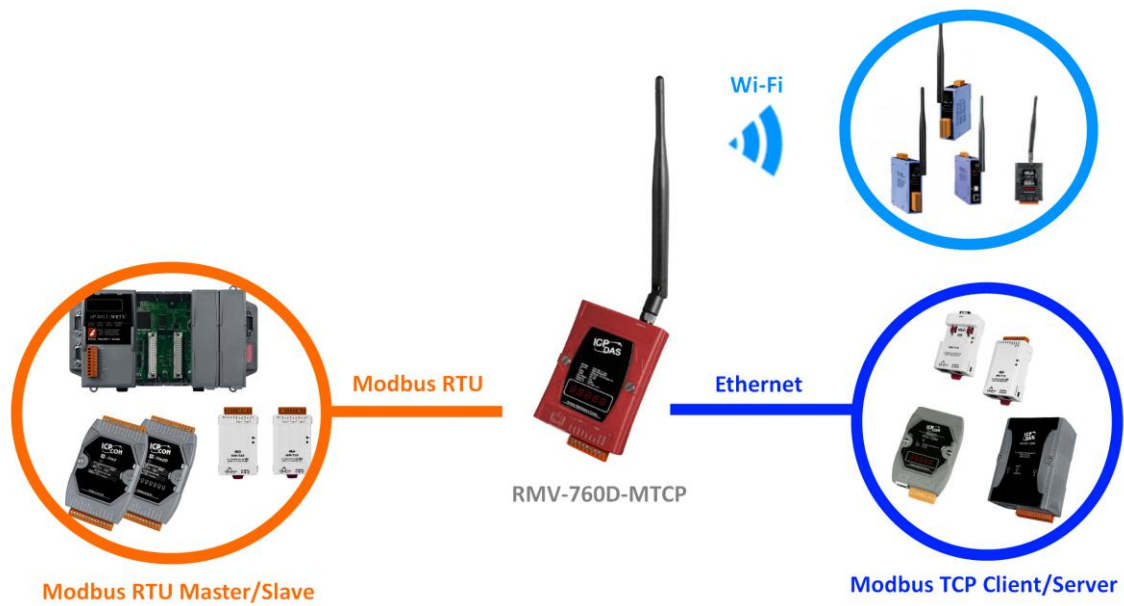


Figure4-5. Modbus RTU and Modbus TCP data exchange

- ii. Pair Connection

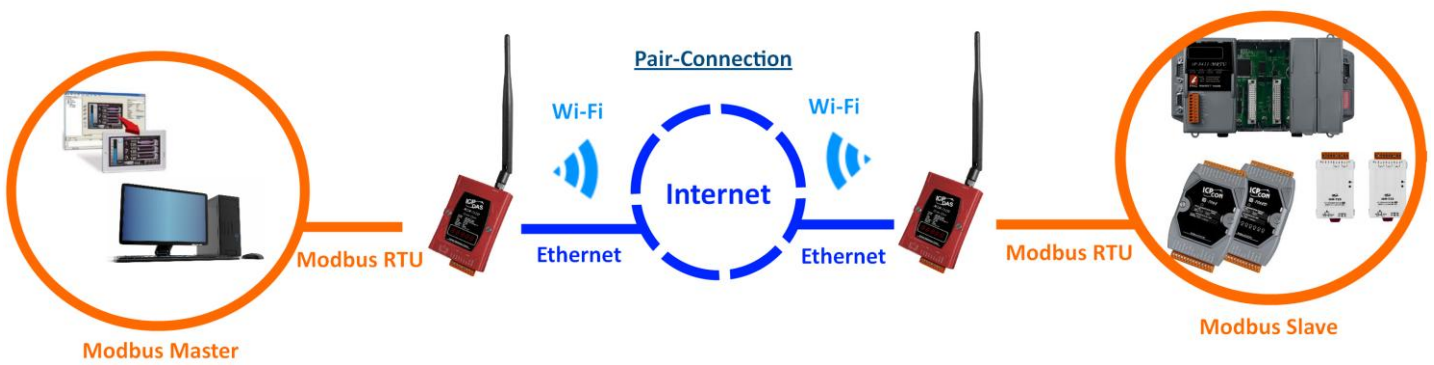


Figure4-6. Pair-Connection

- iii. VxServer

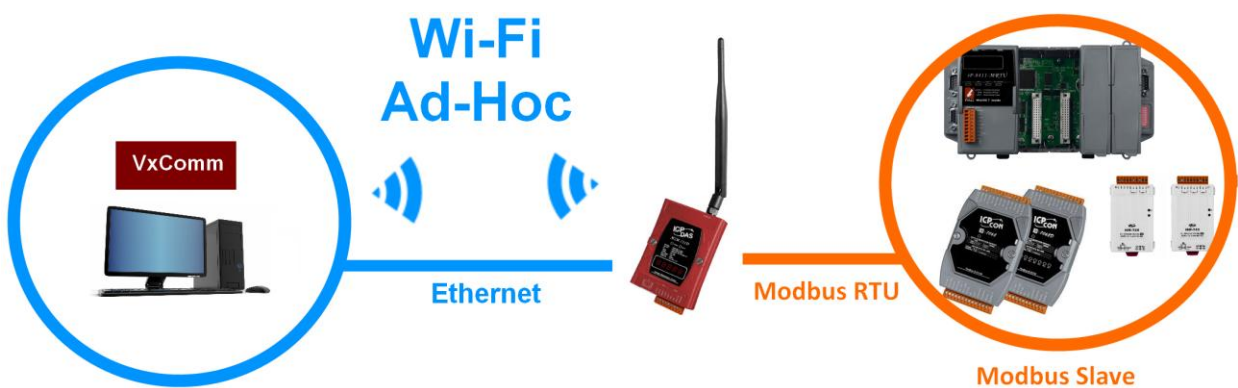


Figure4-7. VxComm

- 6. Click “Submit ” button to complete all your settings.

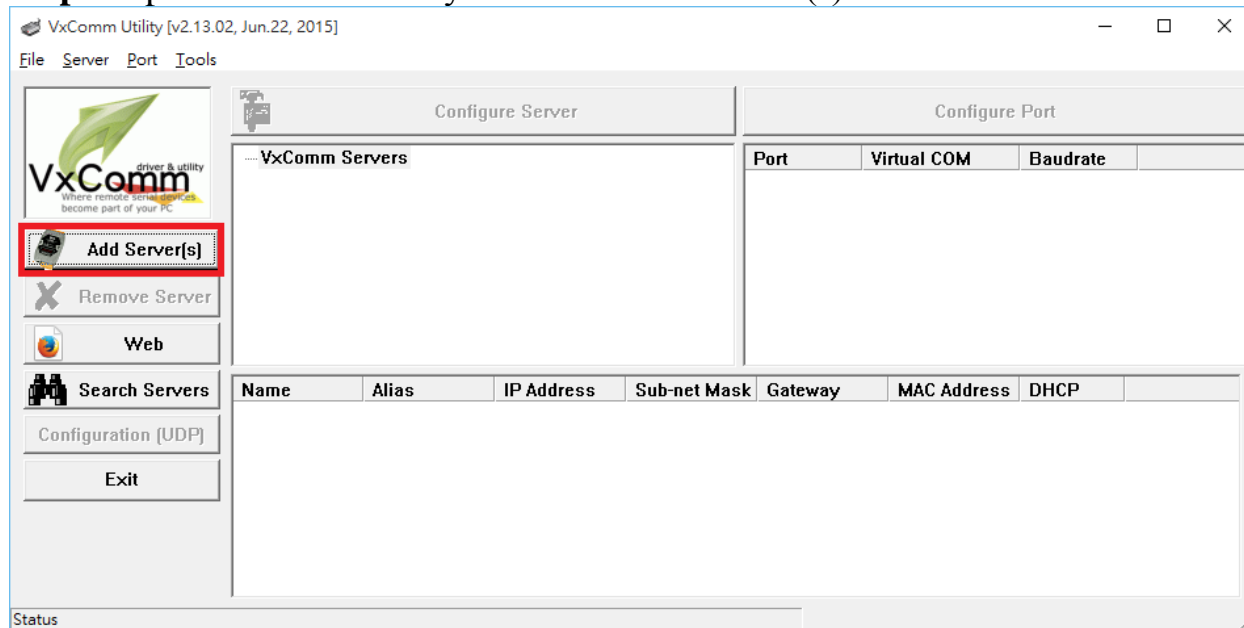
5 How to connect with VxComm ?

Step1: Download VxComm Driver:

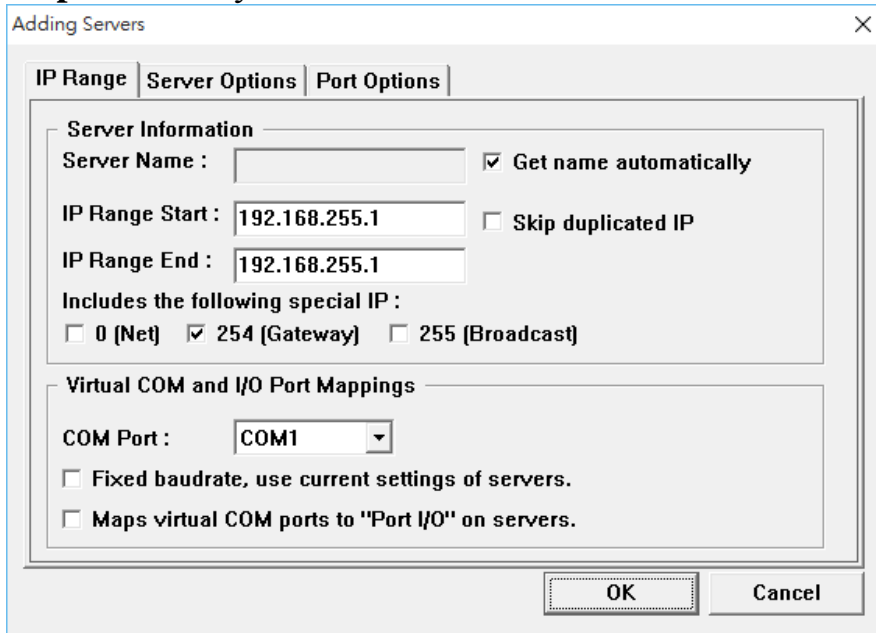
http://ftp.icpdas.com/pub/cd/8000cd/napdos/driver/vxcomm_driver/

"VxComm2K_v2.11.05_setup.exe" for Windows NT4.0, 2000 /XP/2003 and Vista32 (32-bit)
"VxComm98.exe" for Windows 95/98/ME
Please select the most suitable for your Windows and download

Step2: Open VxComm Utility and click "Add Server(s)".



Step3: Fill out your Module IP address and click “OK”.



Step4: Reset VxComm Driver to make settings take effect.

