

1. Quick Start

1.1 Setting the IP address

1. When the MD104-W LED Display first starts up, it will display the IP, Mask, Gateway address details

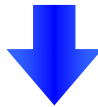
Item	Description
IP	192.168.255.1
Mask	255.255.0.0
Gateway	192.168.0.1

If the first and second numbers of your IP address are 192.168, please skip this section. If not, you will not be able to connect with the MD104-W, and should follow these steps:

Open the “Control Panel” on your PC

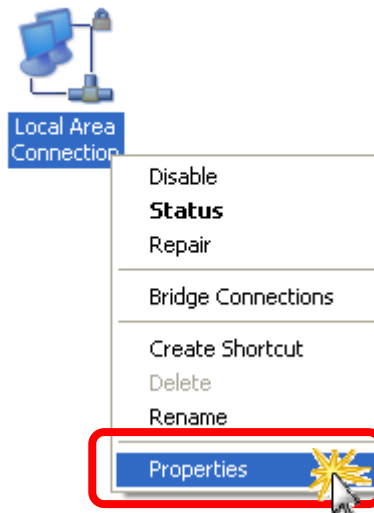


Double Click the “Network Connections” icon

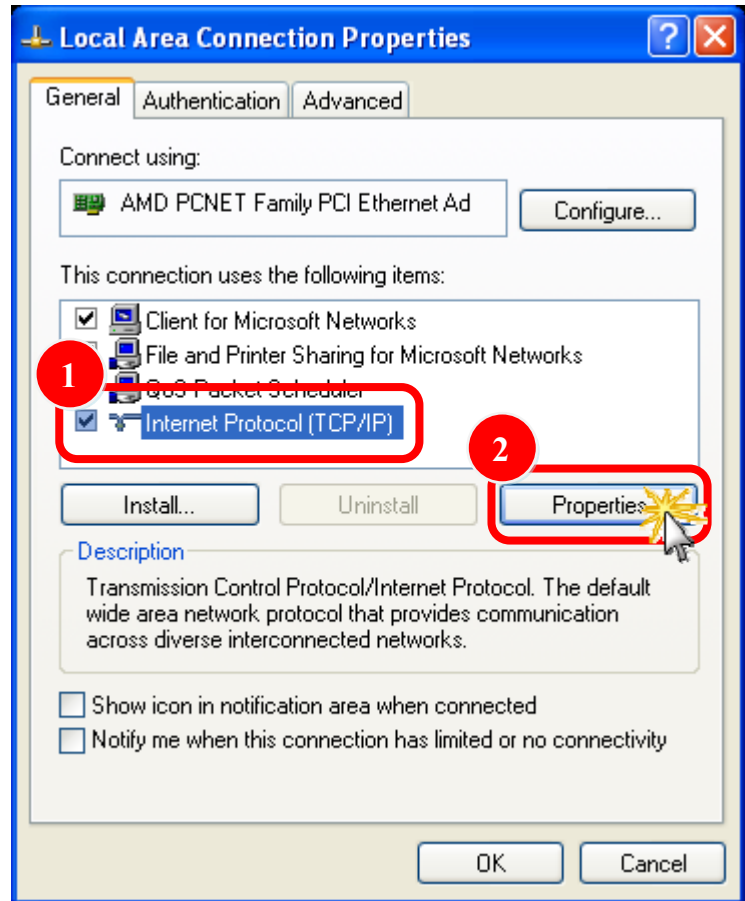


LAN or High-Speed Internet

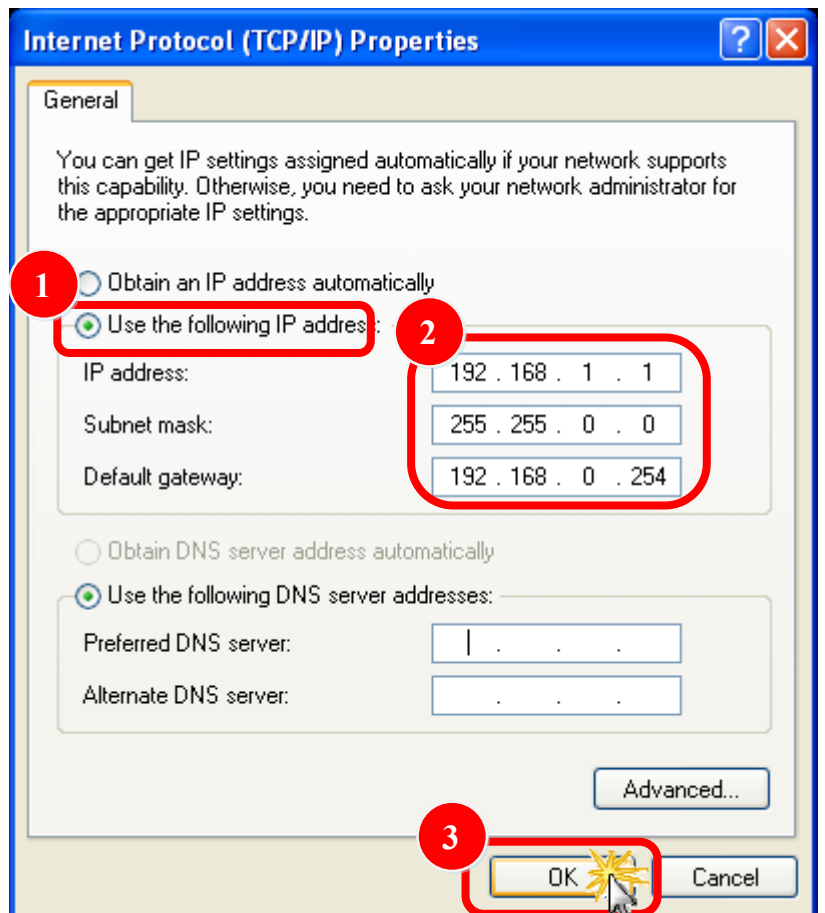
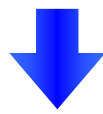
Right Click the “Local Area Connection” icon and Select “Properties” from the dropdown menu



Select the
“Internet Protocol (TCP/IP)”
option and Click the “Properties”
button



Select the
“Use the following IP address:”
Radio button then enter the
appropriate IP address, Subnet
mask and Default gateway values
and then click the “OK” button

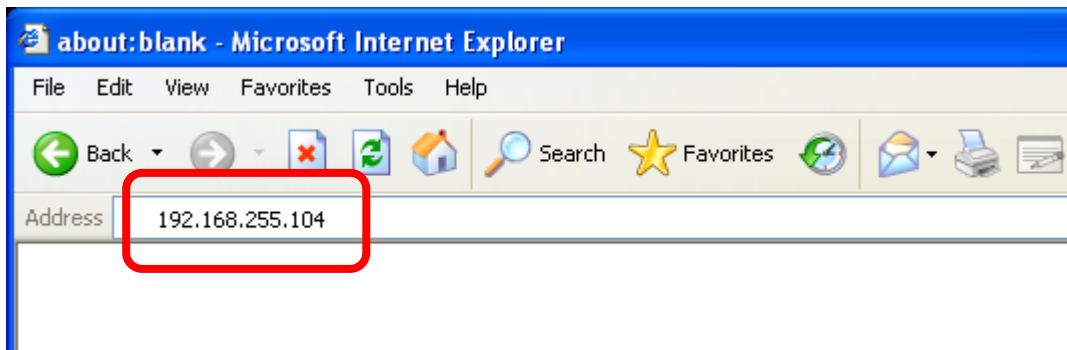


1.2 Logging in to the MD104-W

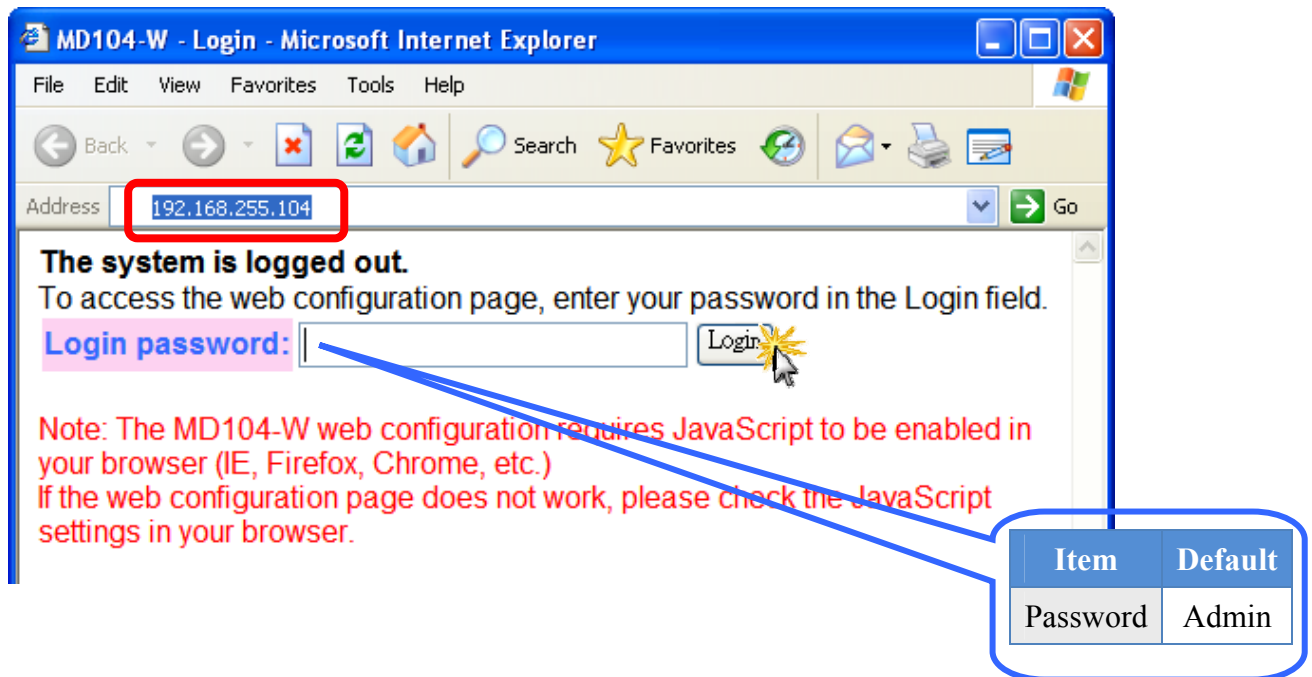
STEP 1: Open your browser (IE, Firefox, Chrome, etc.)



STEP 2: Enter the IP Address of the MD104-W in the address bar of the browser.



STEP 3: Enter your password (The default password is “Admin”) and then click the “Login” button.

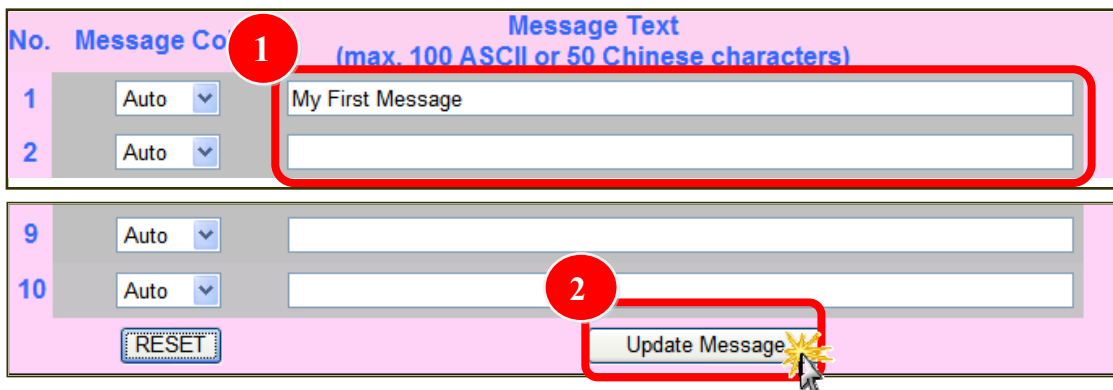


1.3 Enter text

When you first login, you'll see the a menu at top of the page.



1. Enter the required text in the “Message Text” field. Repeat this step for each message to be displayed. Up to 10 messages can be added with a maximum length of 100 ASCII or 50 Chinese characters.
2. Click the ”Update Message” button to send and save the messages



And then, you get it!