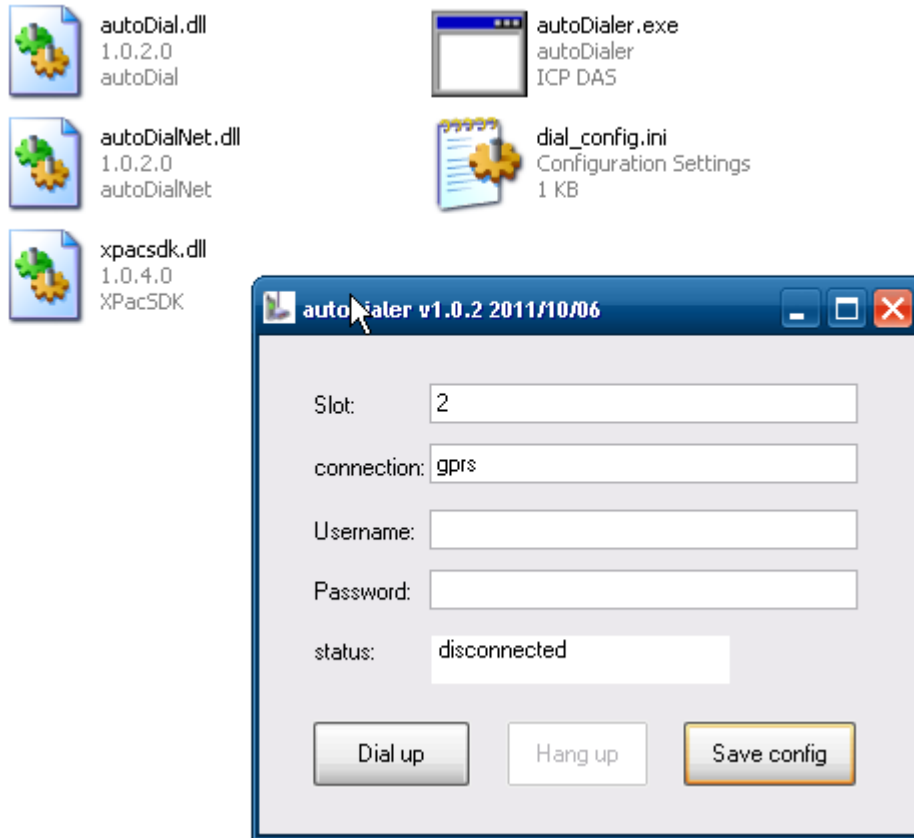


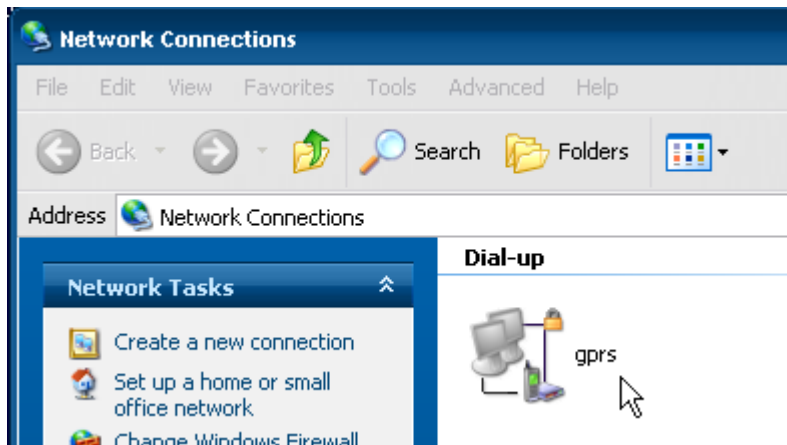
# How to use AutoDialer

1. Please execute “autoDialer.exe” as below.

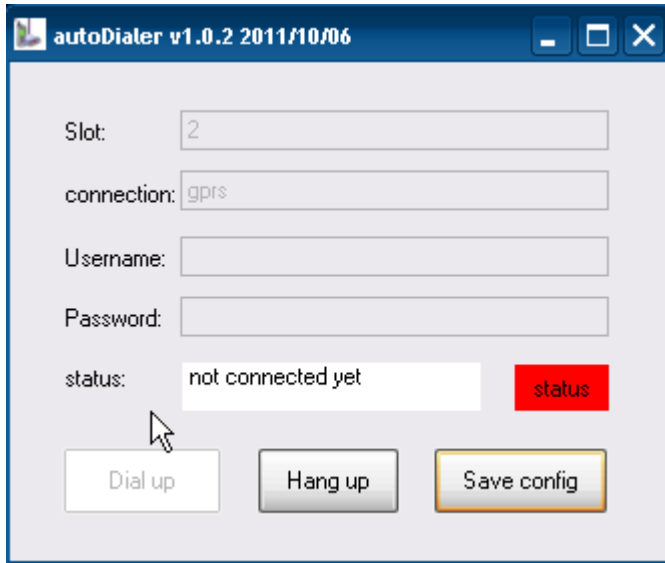


2. Please fill information, and click “Save config” to save your configures.

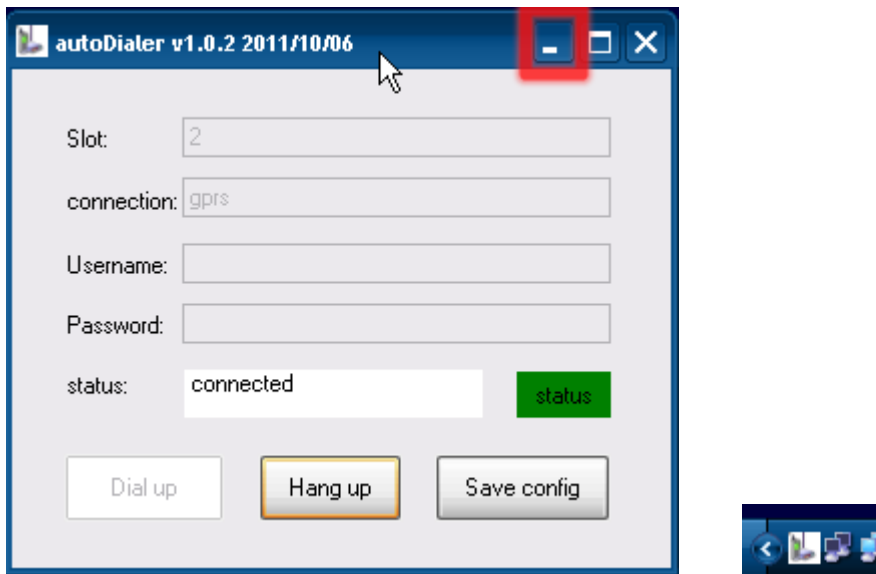
- (1)Slot: slot number of I-8212W
- (2) connection : please make a new Dial-up connection in “Network Connections” (as below), you can refer to the user\_manual of I-8212W.
- (3)Username: username for dial-up, usually you can get it from your GPRS Network provider.
- (4)Password: password for dial-up, usually you can get it from your GPRS Network provider.



3. Click “Hang up” button, it will dial-up. Please wait a minute, the program will reset modem and dial-up.



4. If success, the screenshot as below. You could click “minimize button”, let it hide as left below.



5. The program will be hide when you execute “autoDialer” if you have “dial\_config.ini” file.