



# GTM-204M-4G Series Quick Start

## 1 Product Check List

The package includes the following items :

- One GTM-204M-4G hardware module
- One Quick Start (this manual)
- One companion CD
- One USB Type A to Type B connector cable (CA-USB18)
- One 2G/3G/4G antenna (ANT-421-04)
- One GTM-203M-A audio module
- Screw Driver

## 2 Related Documents and Software

### 2.1 Documents

- User Manual : GTM-204M-4G-Series\_User's Manual
- Quick Start : GTM-204M-4G-Series\_QuickStart
- CD: \napdos\4g\_modem\gtm-204m-4g>manual
- [http://ftp.icpdas.com/pub/cd/usbcd/napdos/4g\\_modem/gtm-204m-4g/manual](http://ftp.icpdas.com/pub/cd/usbcd/napdos/4g_modem/gtm-204m-4g/manual)

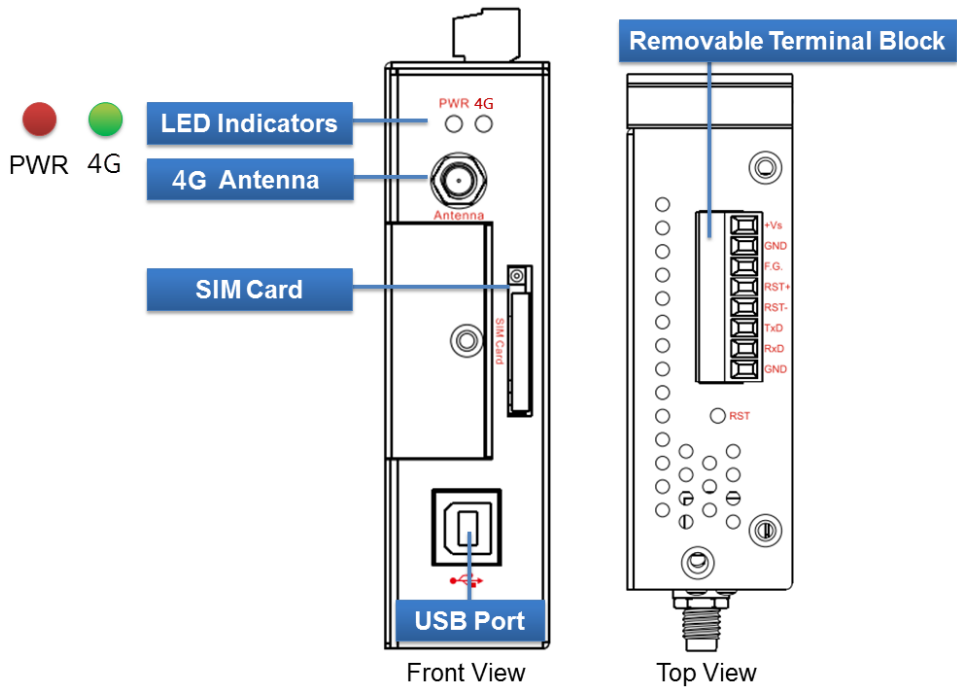
### 2.2 USB Driver

- [http://ftp.icpdas.com/pub/cd/usbcd/napdos/4g\\_modem/gtm-204m-4g/software/driv](http://ftp.icpdas.com/pub/cd/usbcd/napdos/4g_modem/gtm-204m-4g/software/driv)

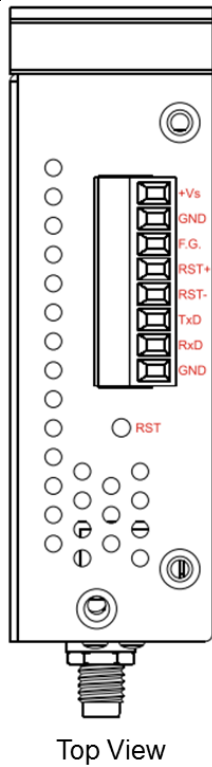
[er/](#)

# 3 Hardware Installation

## 3.1 View of the GTM-204M-4G Panel



## 3.2 Pin Assignments



Power Input +10 ~ +30 VDC	+Vs
	GND
Frame Ground	F.G.
Reset	RST+
	RST-
RS-232	TxD
	RxD
	GND

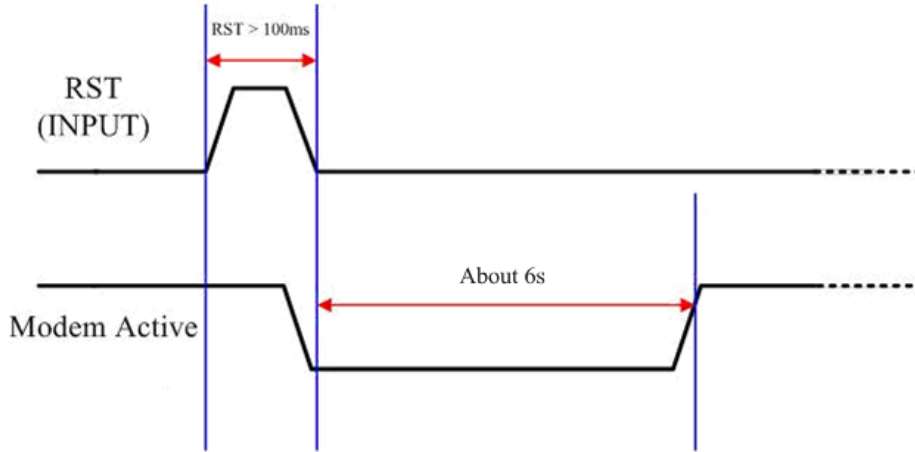
### 3.3 Installation



### 3.4 Reset Wire Connection

Input Type	Reset State ON	Reset State OFF
Reset Input		

Reset Input	
ON Voltage Level	+3.5 V <sub>DC</sub> ~ +30 V <sub>DC</sub>
OFF Voltage Level	+1 V <sub>DC</sub> max.



Timing of restarting the modem

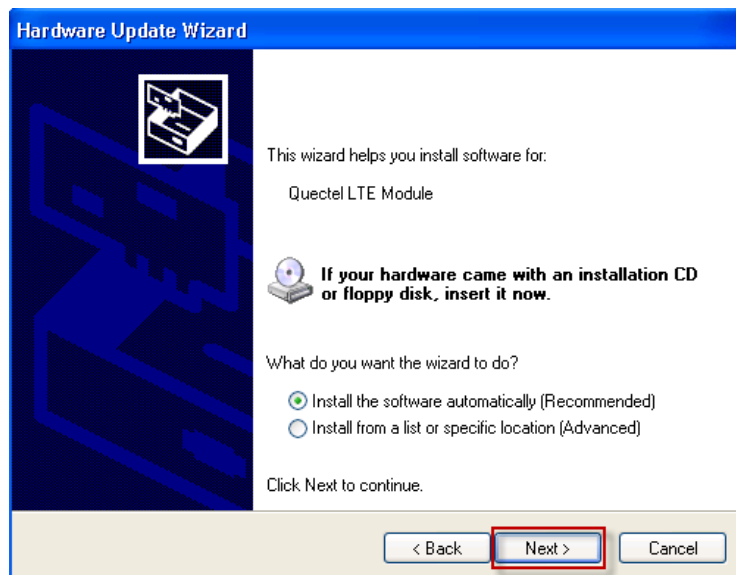
## 4 USB Installation

Step 1: Double Click “GTM-204-4G USB driver V1.00.exe” to install the driver.

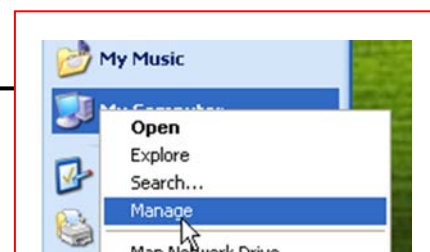
Step 2: Click “Next” until finishing installation.

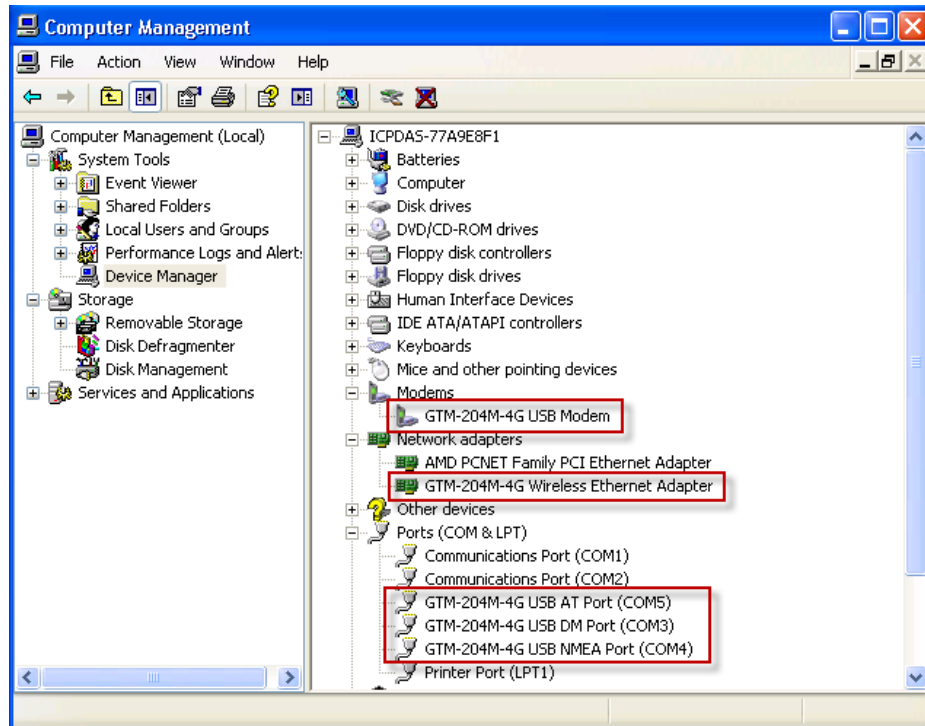
Step 3: Connect the USB of GTM-204M-4G with the PC.

Step 4: The “Found New Hardware Wizard” window will pop-out. Please click “Next” until finishing installation.



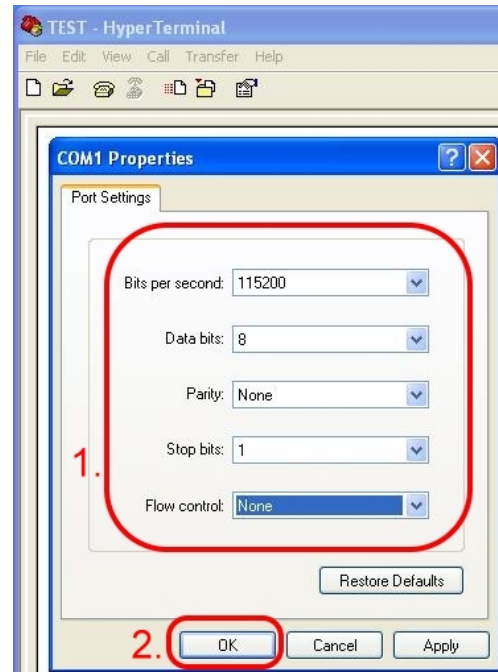
Step 5: Finish the all install steps. Please open “Device manager”, and you will found new 8 items in your computer.



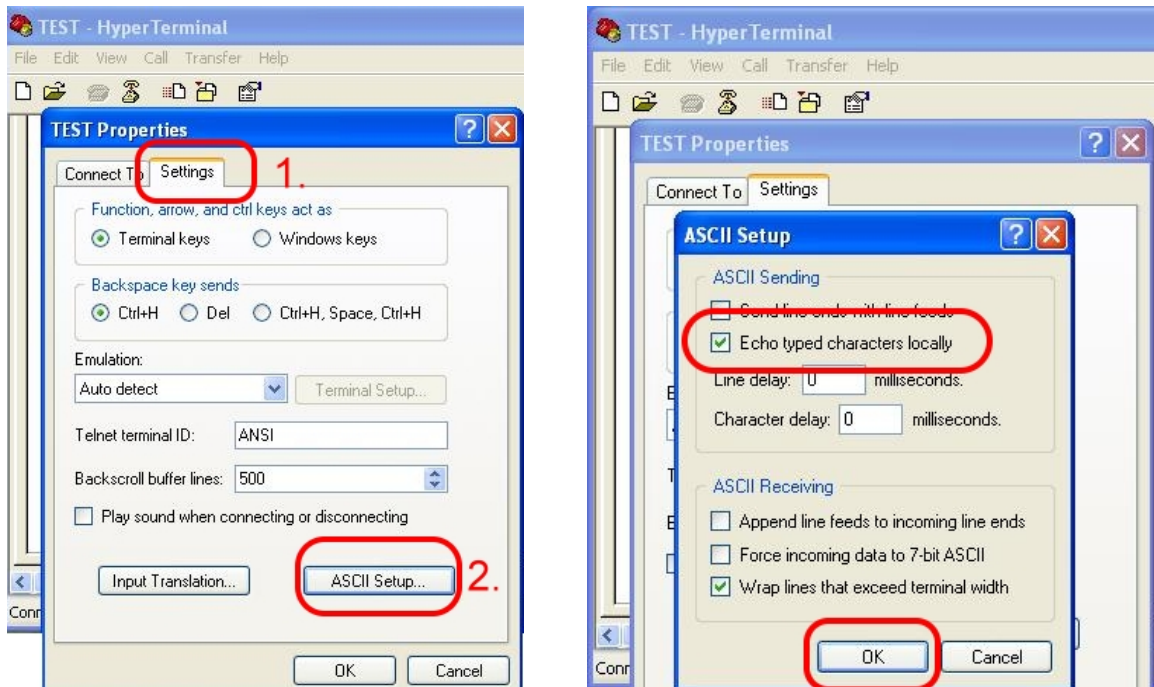


## 5 Quick Test

Step 1: Start → All Programs → Accessories → Communications → Hyper Terminal → Input new connection name → Click “OK” → Select “GTM-204M-4G AT command Port” for USB or your PC serial port for RS-232 communication → Click “OK”



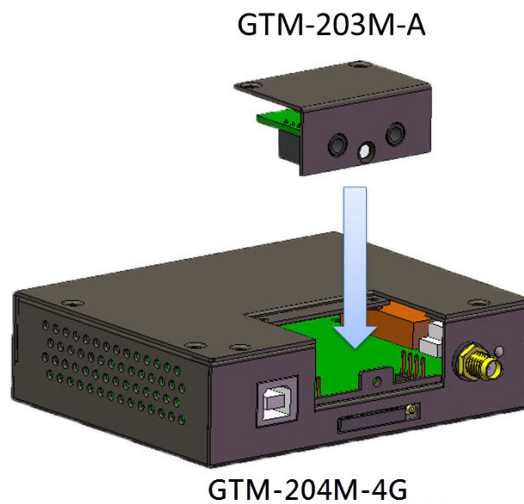
Step 2: File → Properties → Settings → Click “ASCII Setup...” → Select “Echo typed characters locally” → Click “OK”



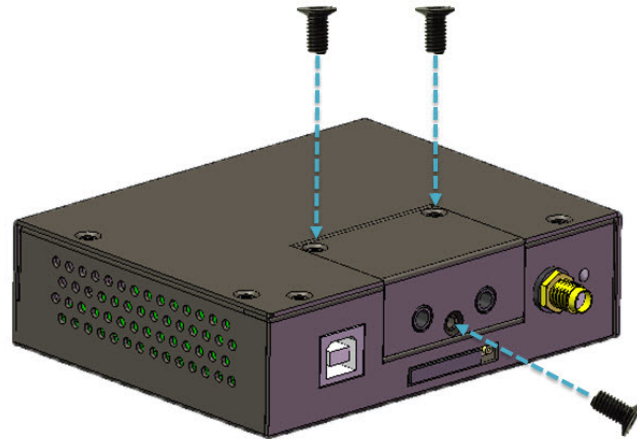
Step 3: Input "AT" and press "Enter", then you will receive "AT OK".

## 6 How to install GTM-203M-A

Step 1:



Step 2:



GTM-204M-4G

## 7 Technical Support

If you have problems about using the GTM-204M-4G, please contact ICP DAS product support.

Email : [Service@icpdas.com](mailto:Service@icpdas.com)

GTM-204M-4G Series website : <http://m2m.icpdas.com/gtm-204m-4g.html>