



Industrial Tri-band 3G Modem

GTM-201-3GWA

Quick Start

Package Checklist

The package includes the following items:

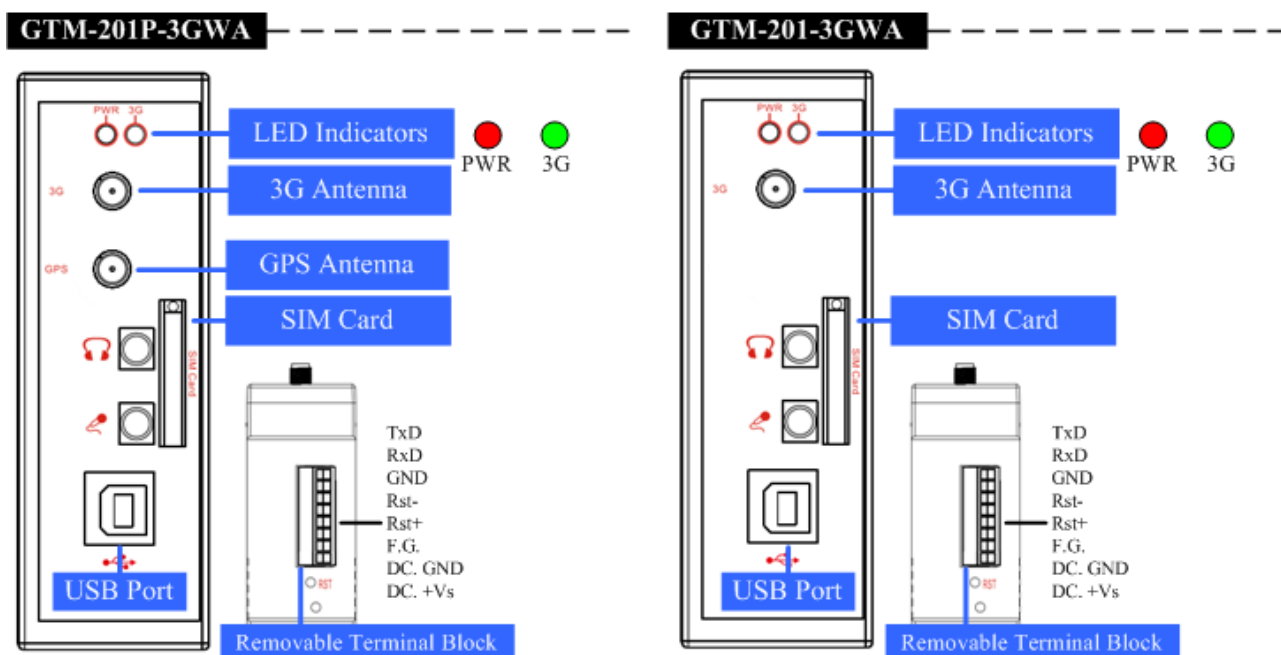
- One GTM-201-3GWA hardware module
- One Quick Start (this manual)
- One companion CD
- One USB Type A to Type B connector cable (CA-USB18)
- One 3G/GSM antenna (ANT-421-02)
- One GPS antenna (ANT-115-03) (only for GTM-201P-3GWA)

Related Documents and Software Utilities

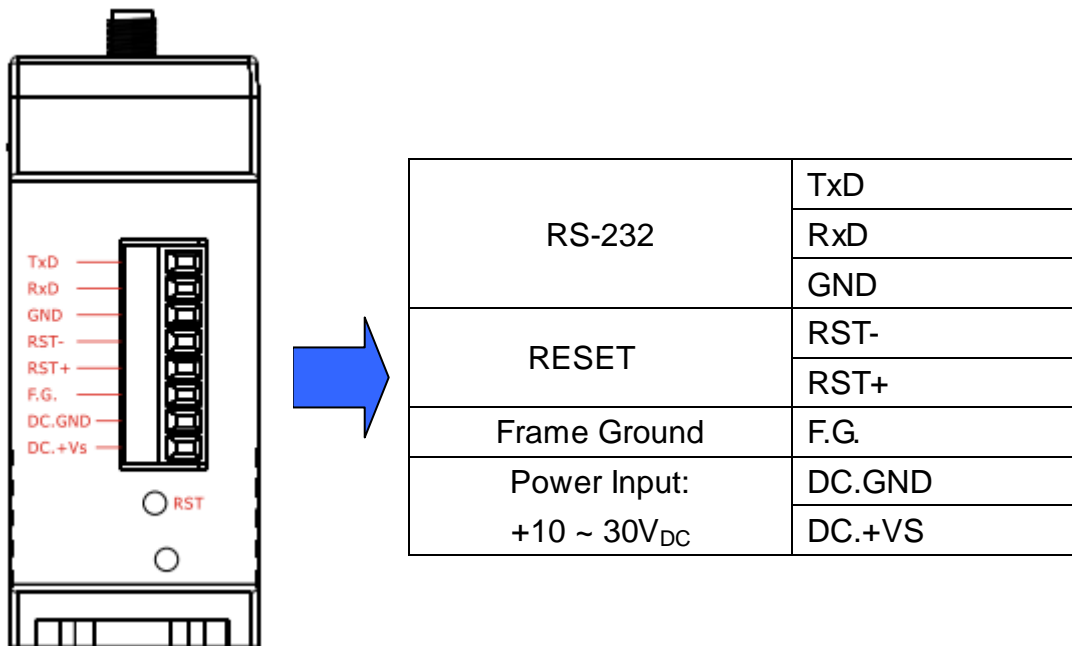
Documents

- User manual: GTM-201-3GWA_User_Manual
- Quick start: GTM-201-3GWA_QuickStart
- CD: \napdos\3G_Modem\GTM-201-3GWA\Manual
- http://ftp.icpdas.com/pub/cd/usbcd/napdos/3G_modem/GTM-201-3GWA/manual/

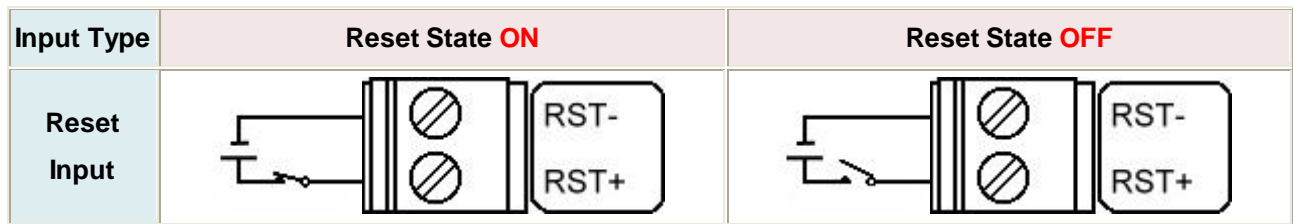
➤ View of the GTM-201-3GWA Panel



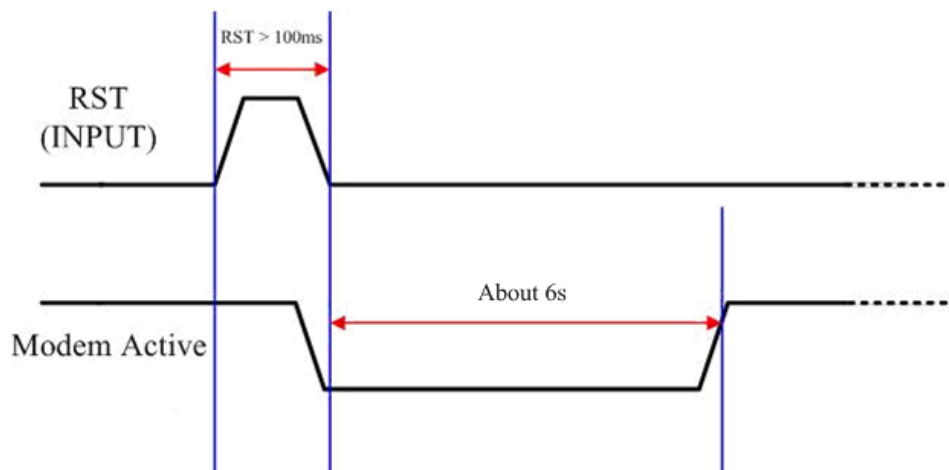
Pin Assignments



➤ Reset Wire Connection

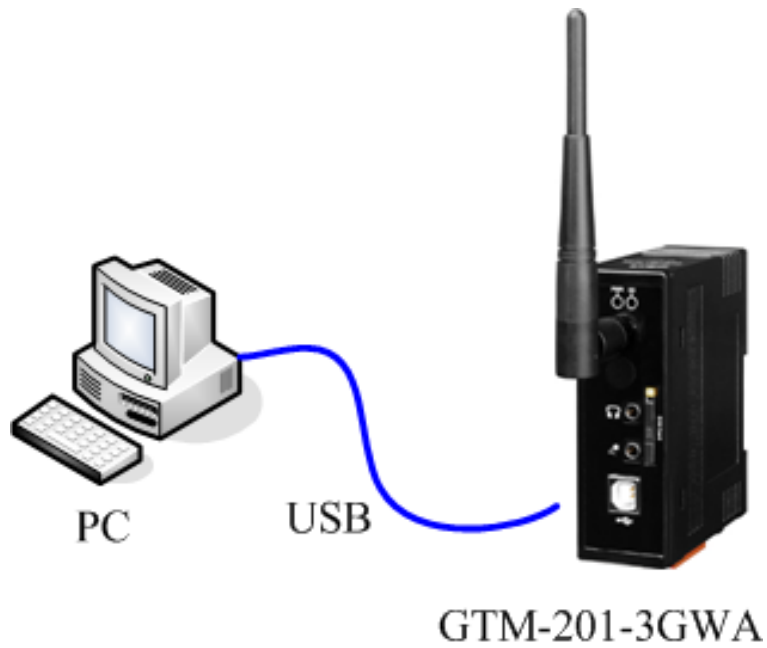


Reset Input	
ON Voltage Level	+3.5 V _{DC} ~ +30 V _{DC}
OFF Voltage Level	+1 V _{DC} max.



Timing of restarting the modem

➤ **Connect the GTM-201-3GWA to PC**



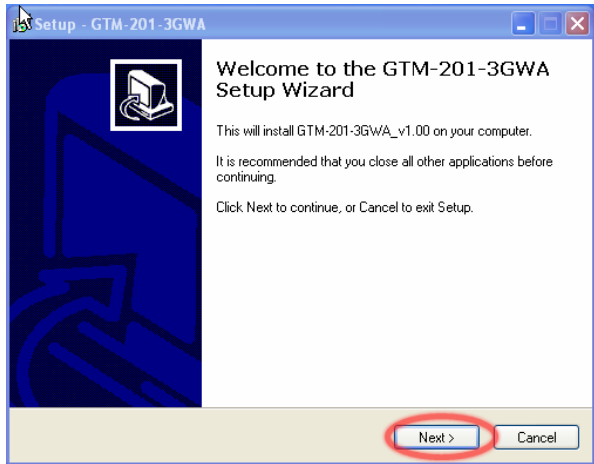
➤ **SIM card and Antenna Installation**



➤ **USB Driver Installation(XP)**

Step1. Double Click GTM-201-3GWA driver “GTM-201-3GWA.exe” to install the driver.

Step2. Click “Next”.



Step3. Click “Next” until finishing installation



Step4. Connect the USB of GTM-201-3GWA with the PC

Step5. The “Found New Hardware Wizard” window will pop-out. Please click “Next” until finishing installation

*All 5 items for installation:

“GTM-201-3GWA Diagnostics”

“GTM-201-3GWA NMEA”

“GTM-201-3GWA AT Port”

“GTM-201-3GWA Modem”

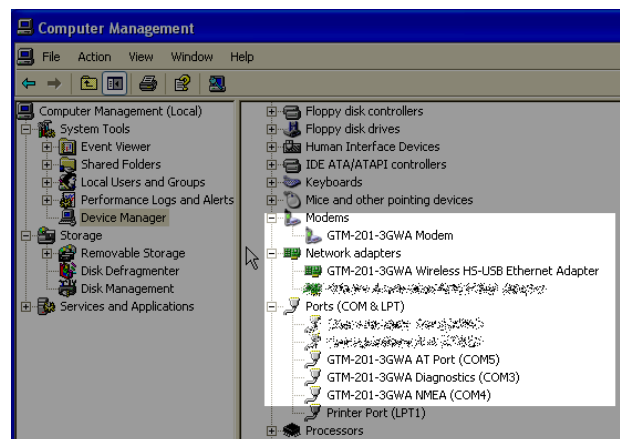
“GTM-201-3GWA Wireless HS-USB Ethernet Adapter”



Step6. Finish the all install steps. Please open “Device manager”, and you will found 5 new items in your computer.

The “GTM-201-3GWA AT Port” is a “AT command port” for GSM library.

The “GTM-201-3GWA Modem” is a Modem for dial-up to 3G/GPRS Network.



➤ Quick Test (Hyper Terminal)

Step1. Start → All Programs → Accessories → Communications → Hyper Terminal → Input new connection name → Click “OK” → Select “GTM-201-3GWA AT PORT” for USB or your PC serial port for RS-232 communication → Click “OK”



➤ Create a new modem connection on PC (for RS-232 dial-up)

Step1. Control Panel → Double-click “Phone and Modem Options” → Modem → Click “Add”

Step2. Select “Standard Modem Types” → Select “Standard 19200 bps Modem” → Click “Next”

Step3. Select your COM Port to connect the modem → Click “Next” → Click “Finish”

Step2. Please refer to the following settings

Bits per second	115200
Data bits	8
Parity	None
Stop bits	1
Flow control	None

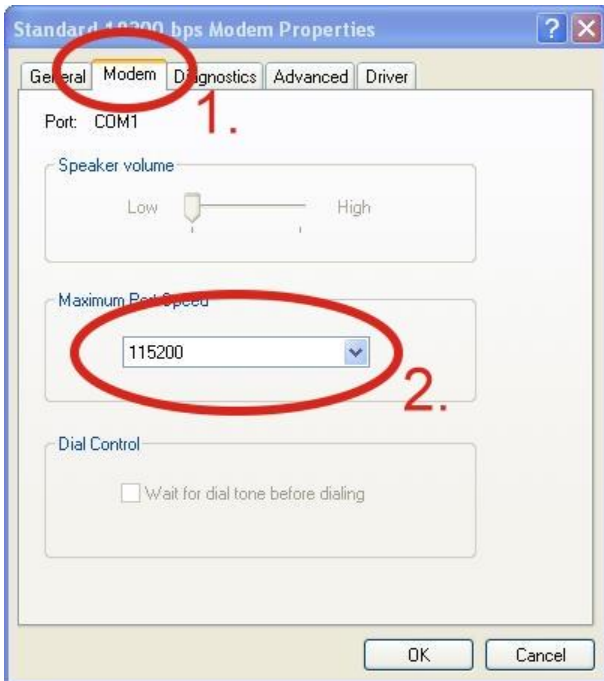
Step3. File → Properties → Settings → Click “ASCII Setup...” → Select “Echo typed character locally” → OK

Step4. Input “AT” and press “Enter”, then you will receive “AT OK”



Step4. Control Panel → Double-click “Phone and Modem Options” → Modem → Select “Standard 19200 bps Modem” → Click “Properties”

Step5. Control Panel → Double-click “Phone and Modem Options” → Modem → Select “Standard 19200 bps Modem” → Click “Properties” → Modem → Maximum Port Speed → 115200



Step6. Advanced → Extra initialization commands:

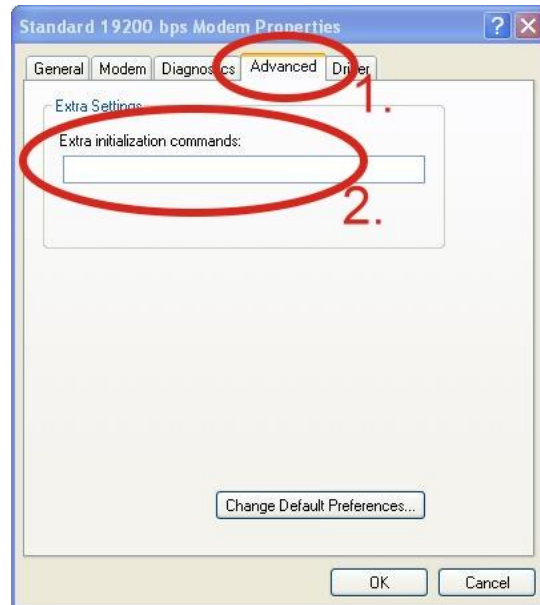
Note: GPRS’s APN must be provided from your Telecom. CO., LTD.

For example in Taiwan:

AT+CGDCONT=1,"IP","INTERNET"

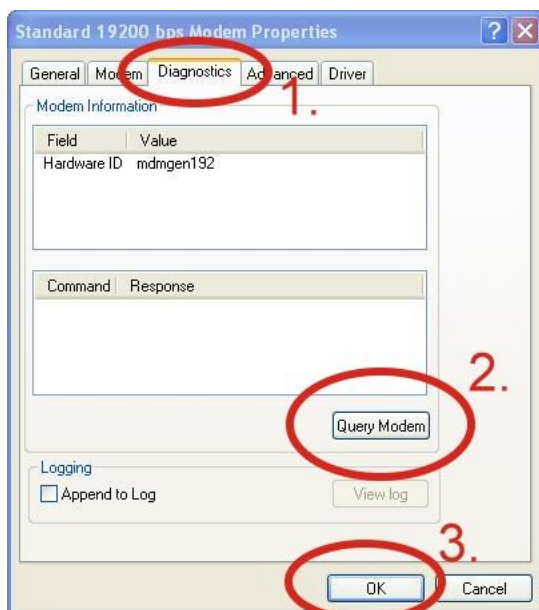
For example in China:

AT+CGDCONT=1,"IP","CMNET"

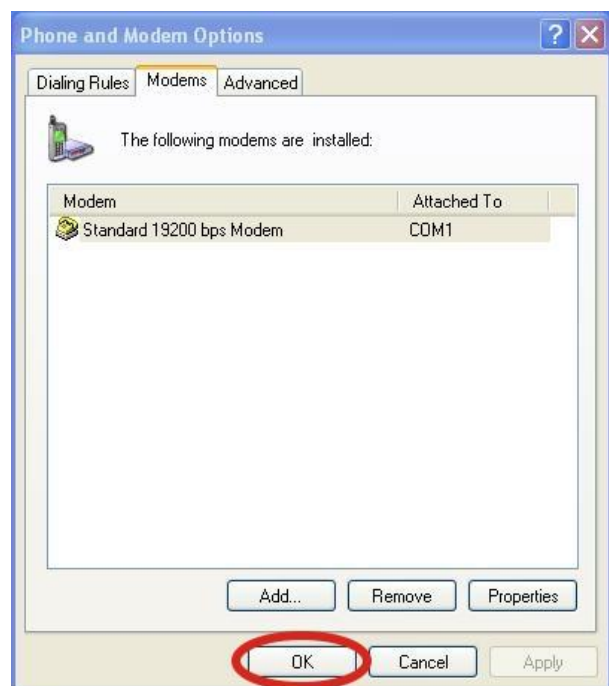


Step7. Diagnostics → Query Modem → Click “OK”

Note: If user queries modem that gets a **Error**, please try again.

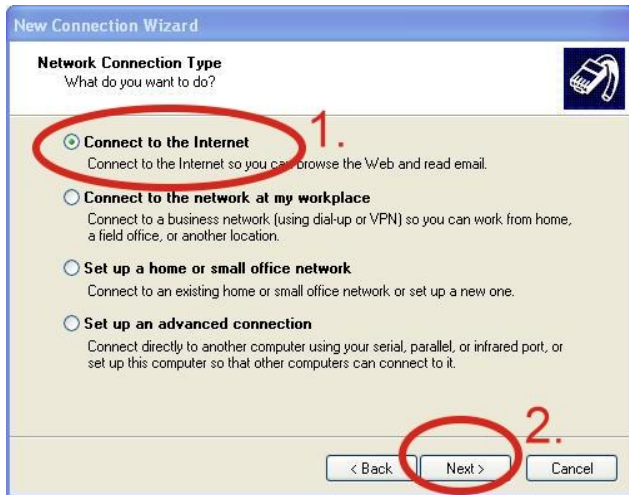


Step8. Click “OK”



➤ Create a new dial-up on a PC

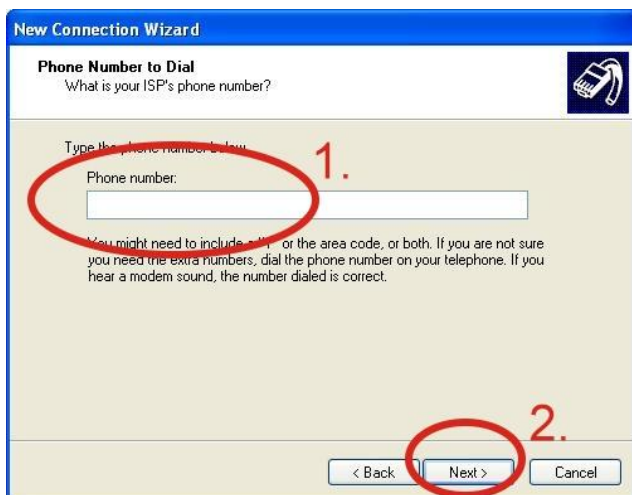
Step1. Control Panel → Network Connections → Click “Create a new connection” → Click “Next” → Select “Connect to the Internet” → Click “Next”



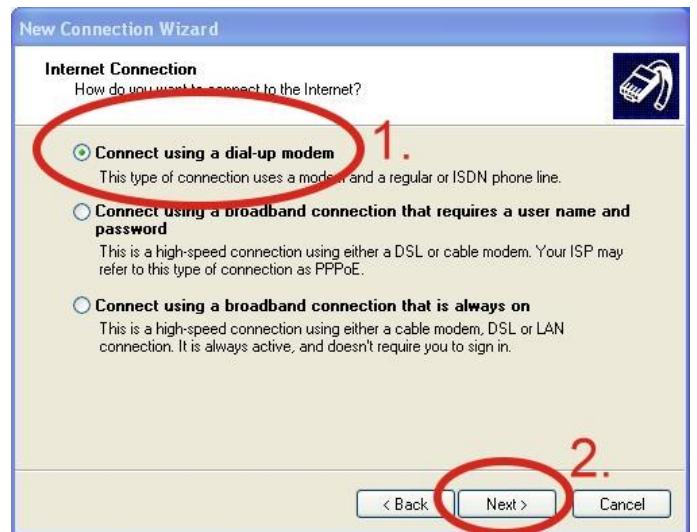
Step3. Your GPRS's name → Click “Next” → Phone Number: → Click “Next”

Note: Phone Number must be provided from your Telecom. CO., LTD.

For example in Taiwan: *99***1#



Step2. Select “Connect using a dial-up modem” → Click “Next”

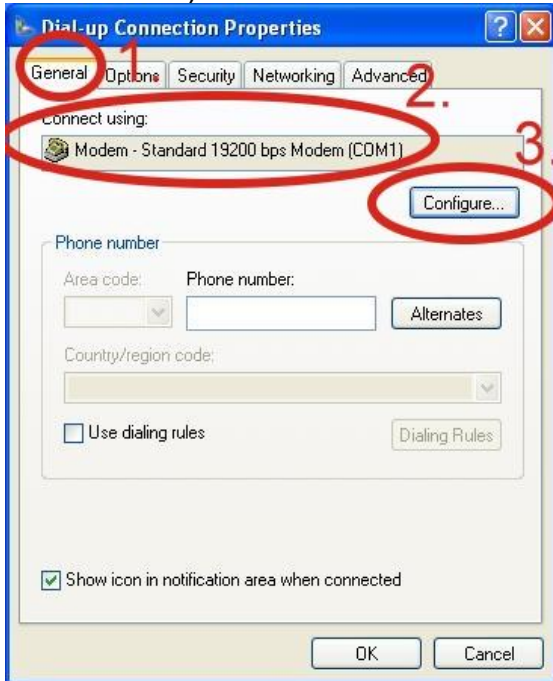


Step4. GPRS's User name and GPRS's Password → Click “Next” → Click “Finish”

Note: GPRS's User name and GPRS's Password must be provided from your Telecom. CO., LTD.



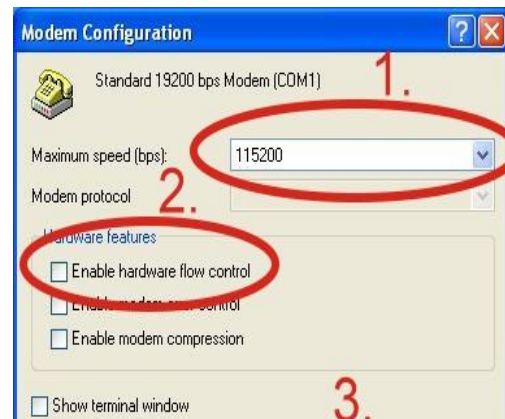
Step5. Control Panel →
 Network Connections →
 Click “Your GPRS’s name” → File
 → Properties → General →
 → Click “Configure”
 Select “GTM-201-3GWA Modem”
 (* Select “Standard 19200 bps Modem”
 For RS-232)



Step6. Maximum speed(bps) →
 Select “115200” →
 Enable hardware flow control (Note)
 → Click “OK”

Note :

GTM-201-3GWA	Please don't select “Enable hardware flow control”
--------------	---



Step7. Control Panel → Network
 Connections → Double-Click “Your
 GPRS’s name” → Click “Dial”



Step8. If you connect to internet
 successfully, your toolbar has new logo



➤ Technical Support

1. ICP DAS Service : service@icpdas.com
2. GTM-201-3GWA software Website:
<http://m2m.icpdas.com/gtm-201-3gwa.html>