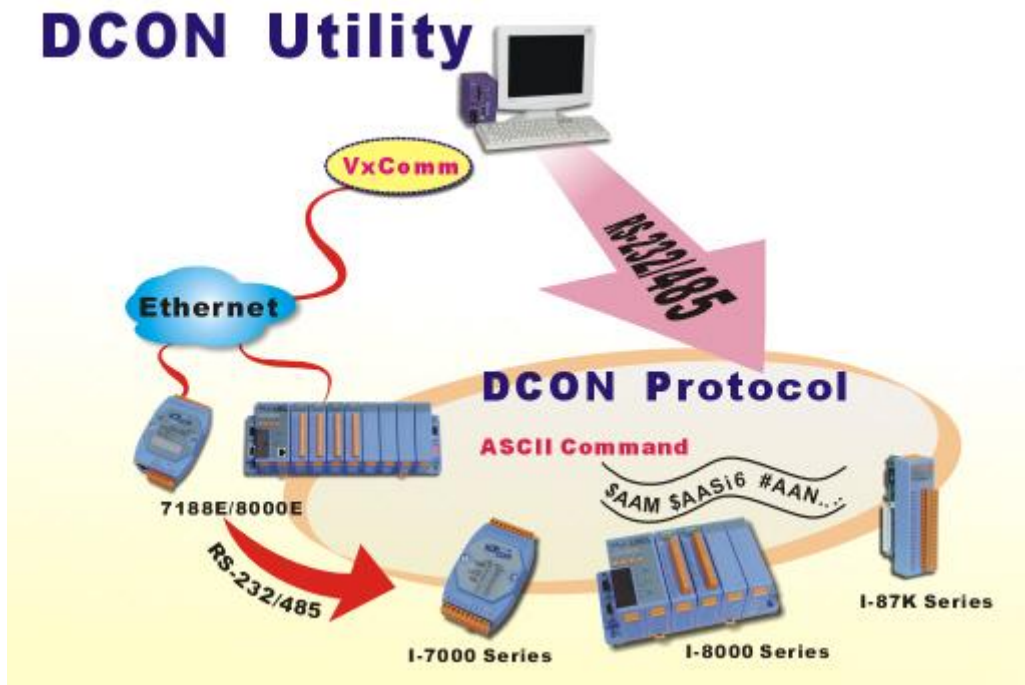


DCON Utility Revision History

Last update:

DCON Utility Version 5.2.3

Release Date: May 30 2012



All revision information:

DCON Utility: Version 5.2.3.....	4
[Version 5.2.2] [Dec,20,2011].....	8
[Version 5.2.1] [Jul,29,2011]	9
[Version 5.2.0] [May,31,2011]	10
[Version 5.1.9] [Sep,30,2010]	11
[Version 5.1.8] [Apr,21,2010]	14
[Version 5.1.7] [Feb,11,2010]	15
[Version 5.1.4] [Jul,21,2009]	17
[Version 5.1.2] [Apr,16,2009]	18
[Version 5.0.6] [Jul,25,2008]	19
[Version 5.0.5] [Jun,20,2008]	21
[Version 5.0.0] [Mar,20,2008]	22
[Version 4.5.0] [Oct,16,2007]	23
[Version 4.4.3] [Jan,23,2007].....	24
[Version 4.4.2] [Sep,20,2006]	25
[Version 4.4.0] [Apr,27,2006]	26
[Version 4.3.9] [Oct,31,2005]	27
[Version 4.3.8] [Mar,2,2005]	28
[Version 4.3.7] [Feb,1,2005]	29
[Version 4.3.6] [Dec,27,2004].....	30
[Version 4.3.5] [Oct,20,2004]	32
[Version 4.3.4] [Oct,7,2004]	33
[Version 4.3.3] [Aug,5,2004]	34
[Version 4.3.2] [Jun,15,2004]	35
[Version 4.3.1] [May,13,2004]	37
[Version 4.3.0] [Apr,22,2004].....	38
[Version 4.2.9] [Feb. 20,2004]	39
[Version 4.2.8] [Jan,05,2004].....	40
[Version 4.2.7] [Oct,14,2003]	41
[Version 4.2.6] [Jun,13,2003]	42
[Version 4.2.5] [Apr,25,2003].....	43
[Version 4.2.4] [Jan,16,2003].....	44
[Version 4.2.3] [Nov,05,2002]	45
[Version 4.2.2] [Oct,29,2002]	46
[Version 4.2.1] [Oct,15,2002]	47
[Version 4.2.0] [Sep,24,2002].....	48
[Version 4.1.2] [Jul,11,2002]	49

[Version 4.1.1] [Apr,3,2002]	50
[Version 4.1.0] [Mar,17,2002]	51
[Version 4.0.9] [Feb,29,2002]	52
[Version 4.0.8] [Jan,22,2002].....	53
[Version 4.0.7] [Jan,14,2002].....	54
[Version 4.0.4 Beta2] [Nov,19,2001]	55
[Version 4.0.4] [Oct,20,2001] by Kevin	56
[Version 4.0.3] [Oct,19,2001] by Kevin	57
[Version 4.0.2] [Jul,10,2001]	58

DCON Utility: Version 5.2.3

Release Date: May 30 2012

New Features:

None

New Support Modules:

1. Added support for I-87016W , I-87084W and I-87088W modules when used with RU-87Pn/USB-87Pn and ET-87Pn Unit.
2. Added support for tM-AD5, tM-AD5C and tM-P3POR3 modules.
3. Added support for ZB-2026 modules.
4. Added support for M-7002, M-7017HL, M-7024R, M-7061 and M-7066 modules.
5. Added support for I-7017HL module

Modifications:

1. Added ” User defined type code” function to the MODBUS protocol for M-7005
2. Added calibration parameters for M-7005 firmware A3.7 or later versions.
3. DCON Utility will no longer enable watchdog function after user resets watchdog.
4. Added rising or falling edge setting for I-87026PW DI counter.

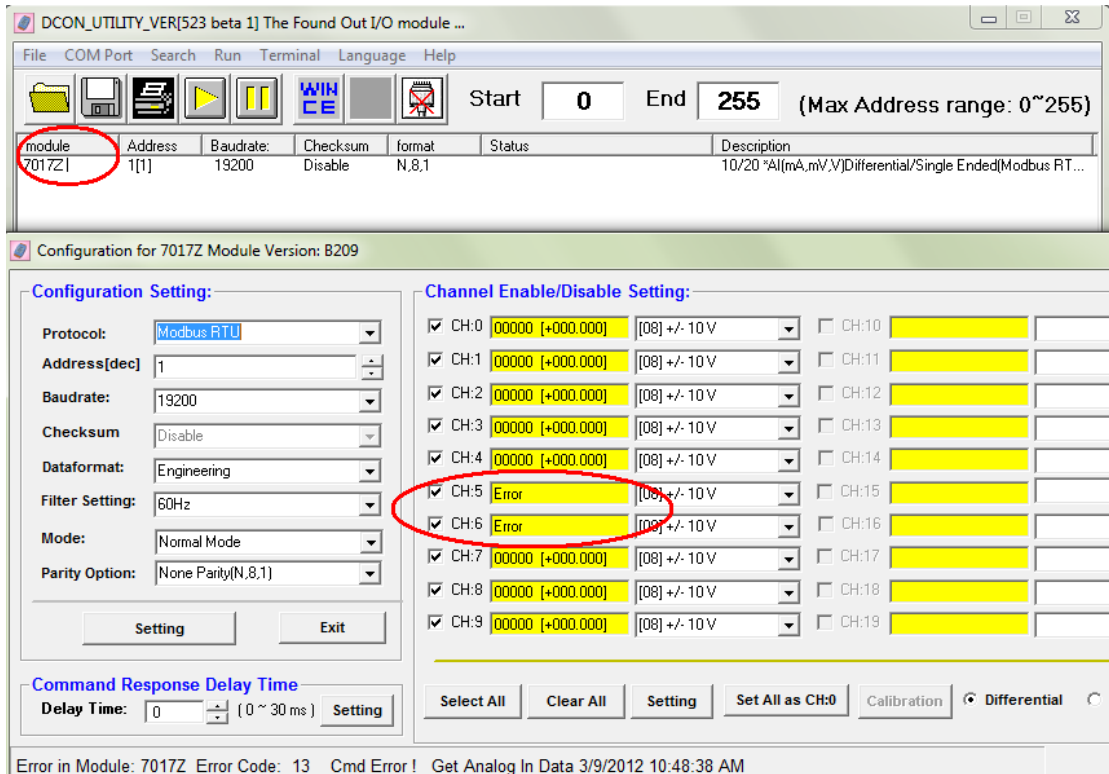
Bug Fixes:

1. Using 756x converter , data was sometimes shown incorrectly in MODBUS protocol:

Affected modules: M-7000, tM-7000 and etc MODBUS protocol modules

Description:

Data fixed the issue where was sometimes shown incorrectly and sometimes shown normally. This was a communication issue in MODBUS protocol only when using a USB to RS-485 converter, for example I-7560, I-7561 or tM-7561.



2. Slot Status was shown “Time Out Error” on RU-87Pn:

Affected modules: All I-87KW high profile modules

Description:

When DCON Utility connects to RU-87Pn via XPAC (CE OS) or WinPAC COM port, the Slot Configuration Status was shown “Time Out Error” on RU-87Pn configuration form.

After user clicks “Configure” button to configure modules then exit, it will also caused “Time Out Error”

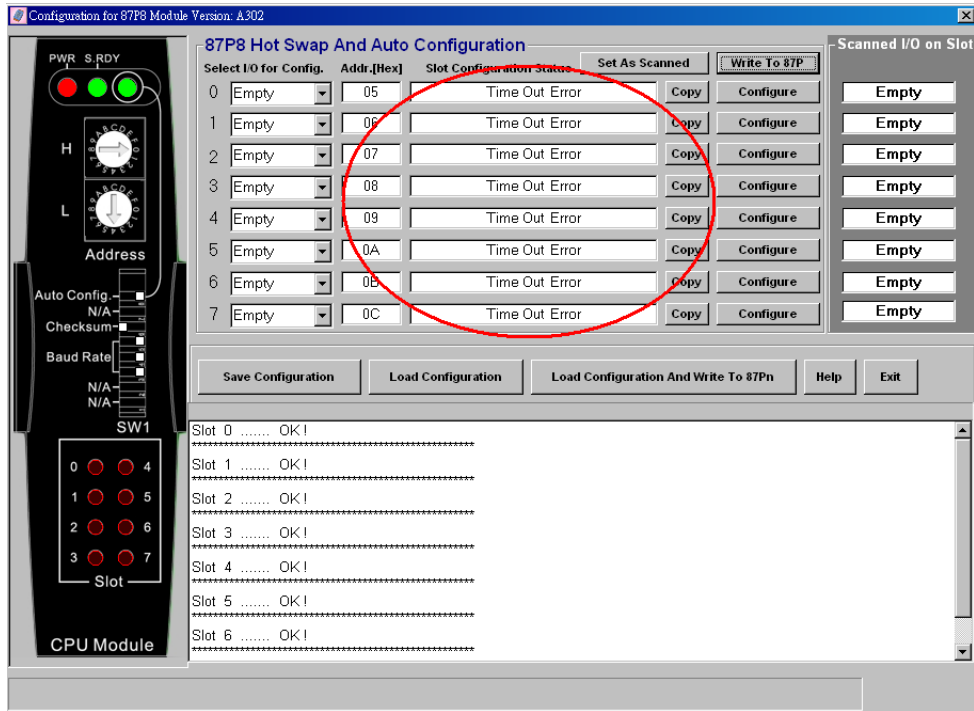
(Users also need to update DCON_CE_WP .exe or DCON_CE_XP.exe to 506 version to prevent this issue.)

DCON_CE_WP.exe can be found at

ftp://ftp.icpdas.com/pub/cd/winpac/napdos/wp-8x4x_ce50/system_disk/tools/dcon_ce/

DCON_CE_XP.exe can be found at

ftp://ftp.icpdas.com/pub/cd/xp-8000-ce6/system_disk/tools/dcon_ce/

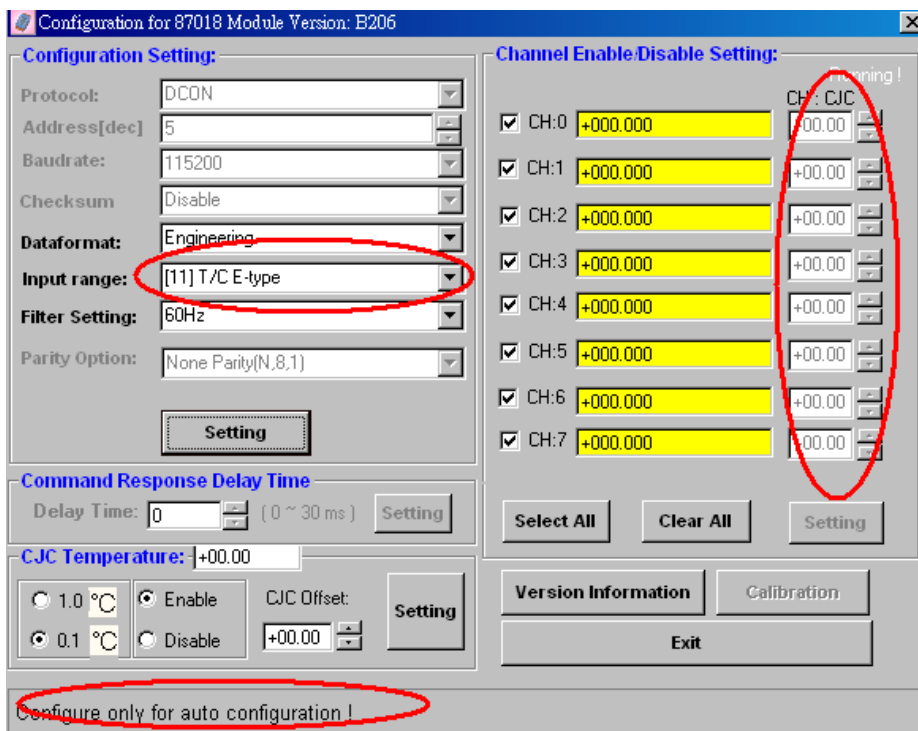


3. 87018 CH: CJC is unable to set for 87Pn to configure module:

Affected modules: I-87018W and I-87018RW

Description:

Unable to set the channel CJC for the 87018 serial modules in the configuration settings for the RU-87Pn, USB-87Pn and ET-87Pn Auto Configuration when using thermocouple type code.

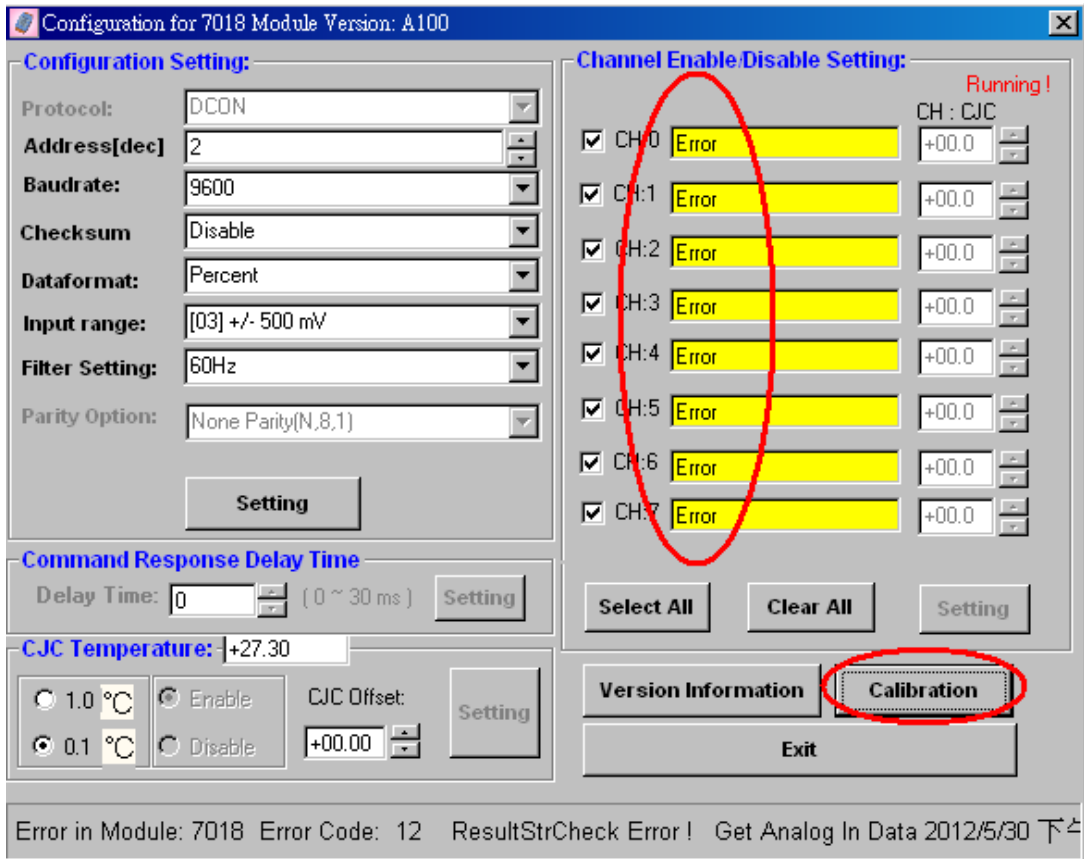


4. AI will show “Error” after exiting calibration.

Affected modules: All 17 and 18 serial modules, example I-7017, M-7017, I-87018, I-87018W and etc modules

Description:

After user clicks “Calibration” and exit calibration dialog, the values of Analog Input was shown “Error”



[Version 5.2.2] [Dec,20,2011]

New Features:

None

New Support:

1. Support RU-87Pn/USB-87Pn firmware A302 new function : ~AARC .
(About more detailed 87Pn iformation , please refer its release note)
2. Support I-87016W module in 87Pn I/O expansion Unit .
3. Support I-8017DW and I-8017HCW module in i-8000/iPAC-8000 PAC .
(Must run DCON firmware A439 or above version in i-8000/iPAC-8000 PAC)

Modify:

None

Fixed Bug:

1. Fixed index of I-87089W board number from 0~7 to 1~8

[Version 5.2.1] [Jul,29,2011]

New Features:

1. Support RU-87Pn/USB-87Pn new firmware version A302
(firmware adds some functions and slot error status ,
please refer RU-87Pn/USB-87Pn release note)

New Support:

1. Support tM-AD8,tM-AD8C,tM-R5
2. Support I-87H17W and I-87089W in I-87Kn
3. Support I-87H17W in RU-87Pn/USB-87Pn/ET-87Pn

Modify:

None

Fixed Bug:

1. fixed channel CJC offset bug for I-87018ZW
(It shows wrong value before DCON Utility 5.2.0)

[Version 5.2.0] [May,31,2011]

New Features:

1. Support XPAC-8000 in both XPE and CE6 OS (using Atom CPU)

New Support:

1. Support
I-87017DW,I-87017ZW,I-87018PW,I-87019PW,I-87019ZW,I-87037W
I-87024RW,I-87042W,I-87057PW,I-87061W
in I-87Kn,RU-87Pn,USB-87Pn and ET-87Pn Remote I/O Expansion Unit
2. Support I-7024R,I-7045-NPN,I-7055-NPN,I-7041P
3. Support tM-series module : tM-P3R3,tM-P4C4
4. Support DCON Utility for OEM version
5. Support M-7088,M-7045-NPN,M-7055-NPN

Modify:

1. Add watchdog function in Modbus protocol
for M-7055 firmware version 309 or later
2. Add calibration function for I-7018BL

Fixed Bug:

1. Fixed Modbus message for using debug function
2. I-87028CW can't configure in Remote I/O Expansion Unit
3. Fixed I-7022 slew rate can't set as 512.0 V/sec

[Version 5.1.9] [Sep,30,2010]

New Features:

1. Support iP-8411 and iP-8811 PAC when they use DCON firmware
2. Support 8K and 87K high profile module plugged in iP-8411 and iP-8811
3. Support FR-net module via 7186EF-016 module for configuration and settings

New Support:

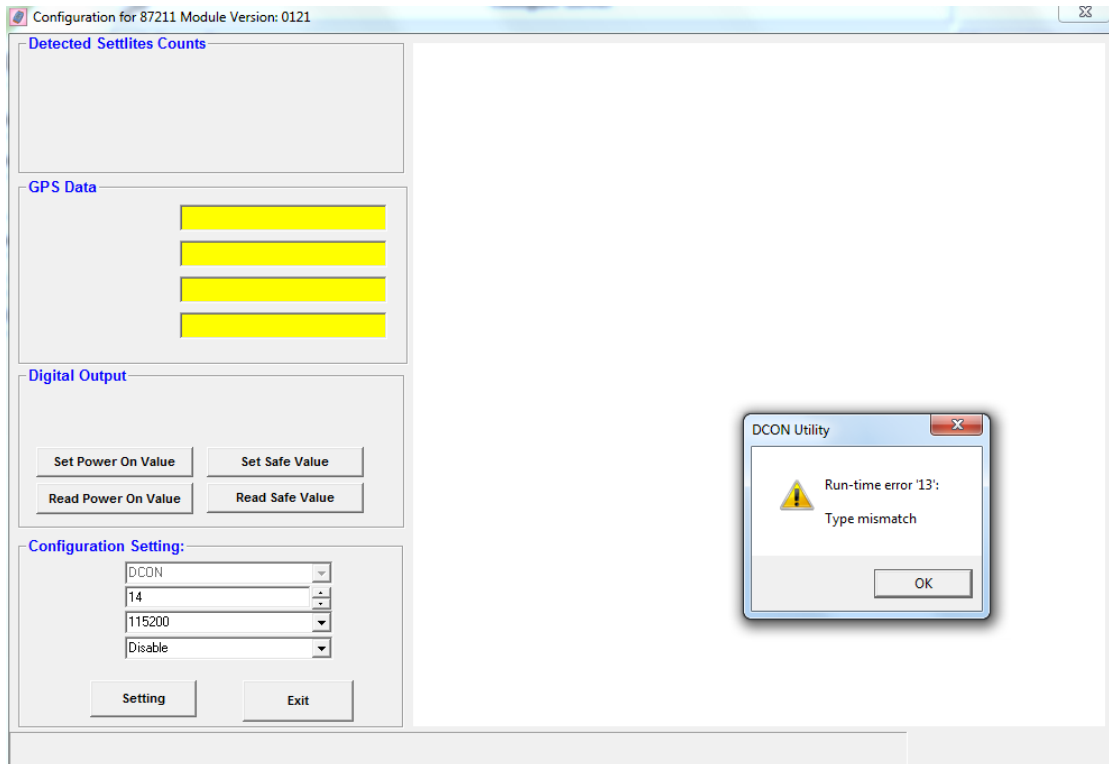
1. Support Zigbee module :ZB-2015,ZB-2017,ZB-2018,ZB-2042,ZB-2043 and ZB-2053
2. Support FR-net module :FR-2017 and FR-2024 (Via 7188EF-016 and 7186EF-016)
3. Support tM-series module :
tM-P8,tM-C8,tM-A8,tM-P4A4,tM-P2POR2,and tM-P2R2
4. Support 87K module plug in 87Kn I/O expansion unit:
I-87018PW,I-87024DW,I-87042W,I-87061W,I-87017DW,I-87053W-AC1 ,
I-87017ZY and I-87057PW
5. Support 87K module plug in 87Pn I/O expansion unit:
I-87018PW,I-87024DW,I-87042W,I-87061W,I-87017DW,I-87053W-AC1 ,
and I-87057PW
6. Support 7000 module: M-7005,I-7024R

Modify:

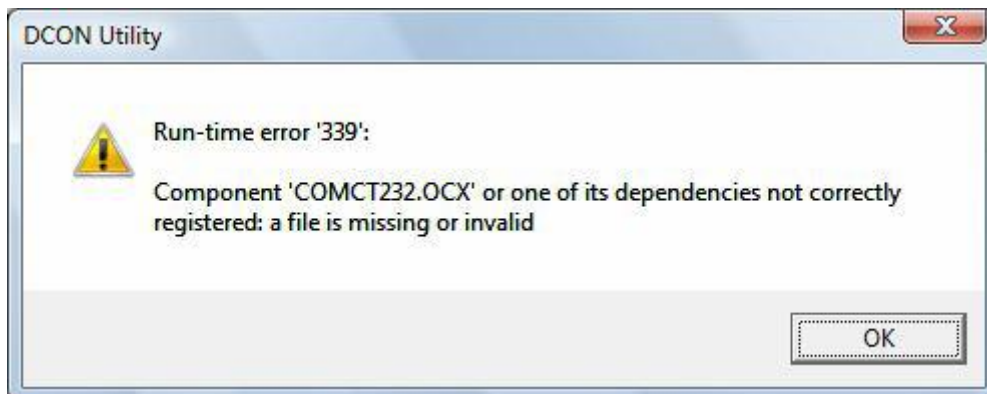
1. Add "read Dip Switch status" function for ZB-2015, ZB-2017 and ZB-2018 in both DCON and MODBUS protocol
2. Add "Config_FLAG and Run_FLAG" function for print debug message. When set them as 1 in config.ini, it can print all DCON Utility executed command in both configuration time and run time for help debug. .
3. Modify "WDT timer" function, it can set the minimum value as 0.5 sec now (It only can set minimum value about 1.4~1.5 sec in before this version.)

Fixed Bug:

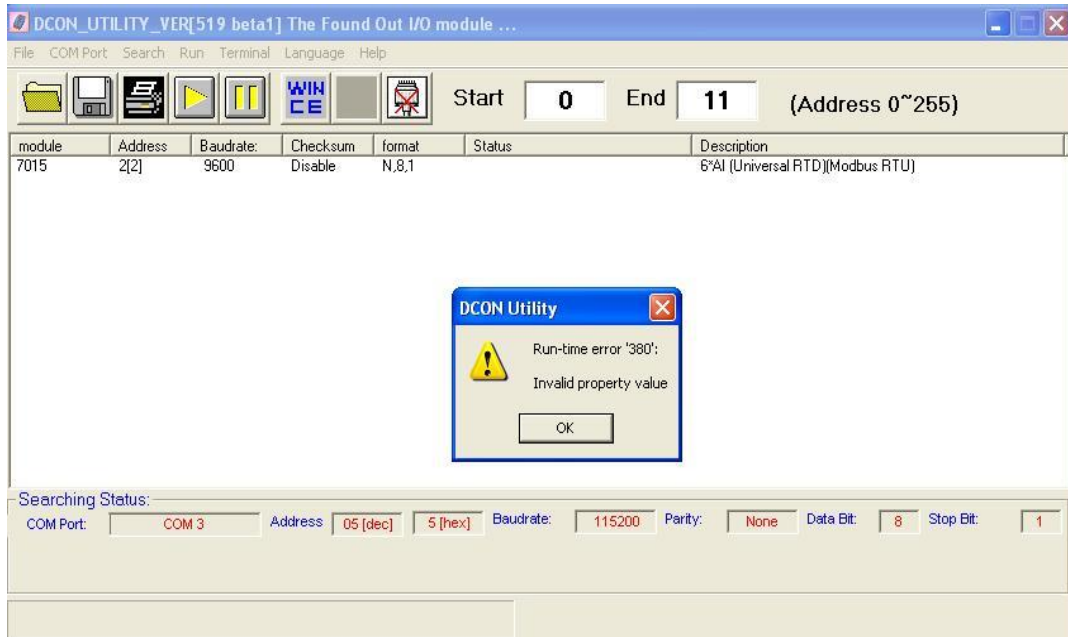
1. Click I-87211W form to cause "Run-time error 13" as below:



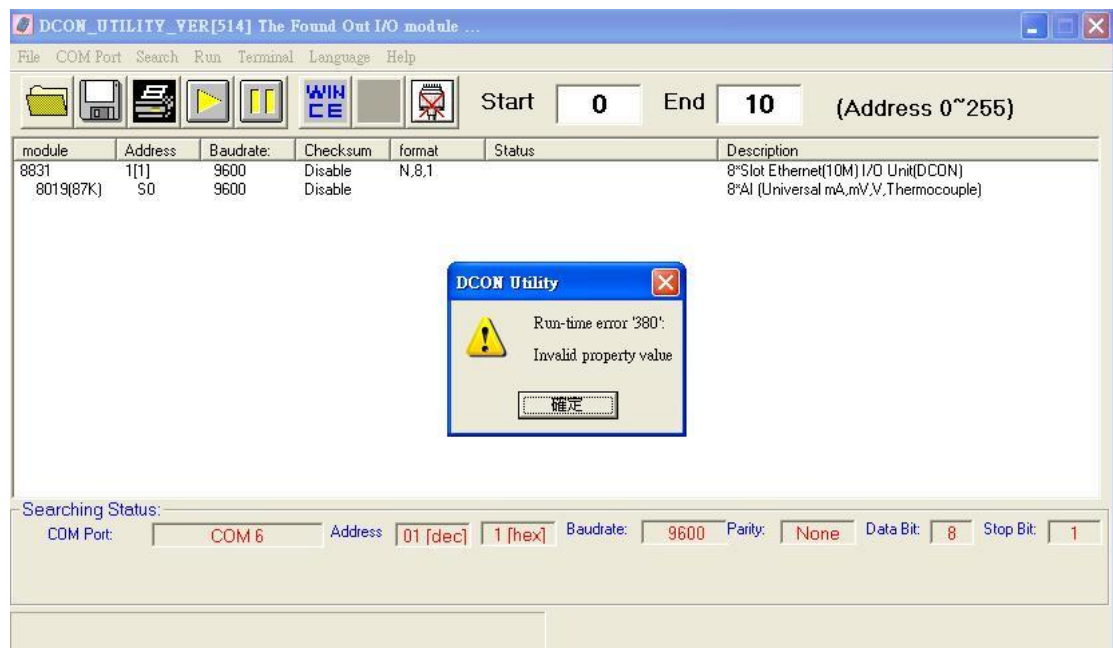
2. Add manifest function to avoid to abnormal install and run DCON Utility in Windows 7 and Vista , or it will cause ocx file fault (similar “Run-time error 339” as below). We recommend to install and run it using administrator account. If it appears , please refer [FAQ_Run_time_error.pdf](#) to solve it



3. Click old M-7015 firmware version (Before version B202) to cause “Run-time error 380” as below



4. When using DCON firmware ,click 8019(87K) to cause “Run-time error 380” as below



5. I-7088 module set as Frequency 333333 Hz and Duty 66.6 % to become Frequency 333333 Hz and Duty 33.3 %

[Version 5.1.8] [Apr,21,2010]

New Features:

None

Support:

1. M-7022 firmware B102 or later version supports Modbus ASCII protocol, and add "parity" function
2. Support I-87005W on 87Pn I/O expansion unit
3. Support I-87042W and I-7061

Modify:

1. Add " engineering data format for Modbus protocol" ,
"type code 4: 0 ~ 5" and "Parity" functions for M-7022 B101 or later

Fixed Bug:

1. Can't configure checksum enable module in XP-8000-CE6 COM2~COM5
(In XP-8000-CE6 side, DCON_CE_XP must be above V604)

[Version 5.1.7] [Feb,11,2010]

New Features:

1. Support ET-87P4, ET-87P8 (Auto Configuration and Hot Swap)
2. Support 87K high profile module plugged in ET-87P4 and ET-87P8

Support:

1. Support PPDS DIO MODULE (PPDS-721-MTCP,PPDS-732-MTCP, PPDS-734-MTCP,PPDS-743-MTCP and PPDS-762-MTCP)
2. Support I-7088 and I-87084W module
3. Support I-8084W,I-8088W and I-8093W on i-8000,iPAC-8000 DCON firmware (DCON firmware must be version A435 or later)
4. Support I-87084W and I-87028CW on 87Pn I/O expansion unit

Modify:

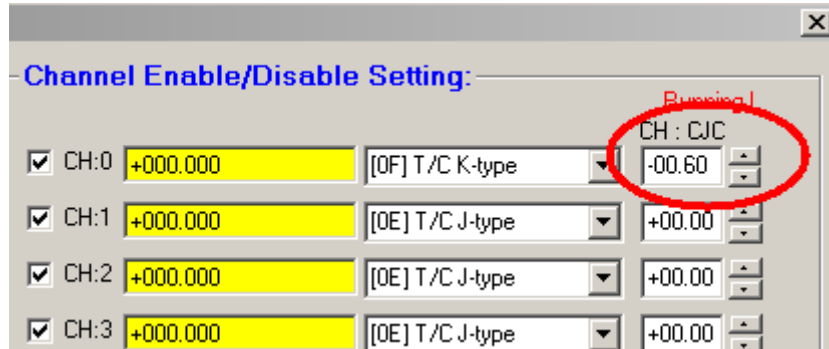
1. Add "Modbus Response Delay Time" and Parity functions for M-7058 version 100,M-7045 version 110,M-7060 version 170 and M-7067 version 170 or later
2. Add "no command received timeout" function for M-7017 version C104 or later
3. Add "display 3 channel temperature on the LED display in turn" function for M-7033 version B201 or later

Fixed Bug:

1. When DCON Utility searches M-7080BD ,it shows "7080Z"



2. M-7018 can't set channel CJC function



3. I-7017 and M-7017 show wrong AI value in Hex data format



[Version 5.1.4] [Jul,21,2009]

New Features:

1. Configure I-7K and I-87K DCON modules on the XPAC_CE (CE 6.0 OS)
COM 1 ~ COM5 via Ethernet

Support:

1. Support DCON Module : I-87005W 、 I-87028CW and I-87061W
2. Support Zigbee module: ZB-2052 and ZB-2060
3. Support I-87059W on RU-87Pn and USB-87Pn

Fixed Bug:

1. Fixed WDT03 display problem
2. Fixed display error on I-87017W module (Input Type 0~20 mA)
3. Fixed M-7080B Filter setting problem
4. Fixed I-7188EF-016 Digital OnLine Status problem

Modify:

1. Remove LED.ocx(modify relation forms:DIO 、 I-7188EF-016 、 Xboard and PDS-700)

[Version 5.1.2] [Apr,16,2009]

New Feature:

1. Configure 7000 and 87K DCON modules on the XPAC (Window XP OS)
COM 1 ~ COM5

[Version 5.0.6] [Jul,25,2008]

- 《 Revision history 》
- 《 Supported OS 》
- 《 Supported I/O Module list 》
- 《 Introduction and user manual 》
- 《 Technical support and service 》

- Revision history :

DCON Utility Version 5.0.6 :

New Features:

1. Configure 7000 and 87K DCON modules on the WinPAC-8000 backplane 、 COM2 and COM3 via Ethernet
2. Configure 7000 and 87K DCON modules on the WinCon-8000 backplane and COM3 via Ethernet

Support :

New support modules: i-7059 、 i-7080BD 、 m-7011 、
i-87017A5 、 i-87017E5 、 i-87053A5 and i-87053E5 modules

Modify:

1. Add watchdog function for the i7012 、 i7014 and i7016 modules
2. Add Engineer data format for m-7017 (B300) and m-7018 (B305) modules in the Modbus protocol
3. Add Input Range : 4 ~ 20mA and 0 ~ 20mA for m7018 (B304)

For more Revision History, please refer to

http://ftp.icpdas.com/pub/cd/8000cd/napdos/driver/dcon_utility/dcon_utility_ver_500.txt

- Supported OS :

DCON Utility can support most Windows OS ,
including Windows XP 、 2000 、 NT and Vista(32 bits),
but it can't support old Windows (ex: win98)

- Supported I/O modules:

DCON Utility can support most ICPDAS module,
it lists all of the supported modules and version in the below page :

http://ftp.icpdas.com/pub/cd/8000cd/napdos/driver/dcon_utility/dcon_utility_module_list.htm

- Introduction and user manual

About DCON Utility introduction, Please refer to
<http://www.icpdas.com/products/dcon/introduction.htm>

And the user manual is located at:

http://ftp.icpdas.com/pub/cd/8000cd/napdos/driver/dcon_utility/manual/

- Technical Support & Service:

For technical support and service,
please contact us at this email : service@icpdas.com
or visit our web site at <http://www.icpdas.com>

[Version 5.0.5] [Jun,20,2008]

New Features:

87K module configure and set at WinPac 8000

Support:

New support module: i-7059 、 i-87053A5 、 i-7080BD and m7011

Bug Fixed:

Fix disable WDT and safe value in the Modbus 7000 DIO module

Modify:

1.Add i7012 、 i7014 and i7016 WDT

2.Add m7017 (B300) and m7018 (B305) Modbus Engineer data format

3.Add m7018 (B304) Type Code: 4 ~ 20mA and 0 ~ 20mA

[Version 5.0.0] [Mar,20,2008]

Support:

1. Analog input module : 87015P,7015P 87018Z
2. Digital input module : 87059W
3. USB-87Pn Auto Configuration Remote Expansion I/O Unit.

New Feature:

- 1.Support multi-Language :default for English and Traditional Chinese
Users can add languages by themselves, please refer to
ICPDAS\DCON_Utility\language\Readme.txt

Modify:

- 1.Add Watchdog configuration for 8410/8810;8430/8830 DCON Firmware
For 8410/8810 DCON Firmware please refer to

ftp://ftp.icpdas.com/pub/cd/8000cd/napdos/dcon/8410_8810/firmware/for_256k_sram/dcon/

[Version 4.5.0] [Oct,16,2007]

Support:

1. RU-87P4,RU-87P8 Auto Configuration Remote Expansion I/O Unit.
2. M7018Z Modbus AI Module.
3. 7017Z ,7017A5, 87017A5 AI module
4. 7083,7083B Encoder module

Modify:

1. Add Parity check function for 7018R,7015,7033,87013
2. Add Engineering format for Modbus 7018Z ,7015 (Ver>=B202) and 7019R (Ver>= B300)
3. Add 7019R,87019R,7018Z,87018Z,7015,87015,7005 Calibration Function

Fix bug:

1. 7005 can not set user define type code.
2. Can not use WinCon to Configure 87015,87005

[Version 4.4.3] [Jan,23,2007]

Support:

1. 7019Z,87019Z 10 Channel AI module.

Modify:

1. To make it compatible with ODM version of 7018Z.
2. Add Channel Temperature Offset function for
7015,87015,7019R,87019R and 7005
3. Remove the MDI Form and Add Start Search Address Option
4. Add Hex Format Data Conversion for Analog module
5. Support new type code 0x82 and 0x83 for 7017/87015
6. Support 50/60 Hz filter setting for 7015,87015,7018Z,87018Z
7. Support new type code 0x2E, 0x2F, 0x80 and 0x81 for 87013

[Version 4.4.2] [Sep,20,2006]

Support:

1. 8017ML(87K),8017RC(87K) when 87017ML and 87017RC inserted into i-8000 system.
2. 87017RC,87017ML when 87017ML and 87017RC inserted into i-87K I/O Expansion.
3. 87017RC,87017ML when 87017ML and 87017RC inserted into WinCon 8000 system.
4. 7018Z,87018Z 10 Channel AI module.

Modify:

1. add watch dog status detection for all 8K DIO, 7K and 87K modules.
2. add type code information for all analog modules.

Bug:

1. Doesn't support input range of L- (0x17) and M- (0x18) thermocouple types
for 7011P and 7018P modules.
2. Doesn't support 7005 ohms data format.

Note:

- 1.The Firmware must be A3.08 or above to support 87017ML and 87017RC inserted into i-8000 system.
- 2.The Firmware must be DCON_CE_V201.exe or above to support 87018Z,87017ML and 87017RC inserted into WinCon 8000 system.

[Version 4.4.0] [Apr,27,2006]

New Support Modules:

1. 8082,8019(87K),8015(87K),8082(87K),8015T(87K),8017HS DCON protocol modules which inserted into the i-8000 system.
2. M-7022 modbus RTU Analog output module.

Note1:The i-8000 DCON firmware must be A3.07 or above to support the 8019(87K),8015(87K),8082(87K),8015T(87K),8017HS.

Note2:The 8015T(87K) is an ODM product,not formally release one.

Note3:For 8017HS, when the selected jumps are located at single end position,it can support 16 channel Analog Input. When located at differential,it will be named as 8017H/HS, it can support 8 channel Analog Input.

Note4: 8082 and 8082(87K) are totally different I/O modules.

Modify:

1. i-8018 add module CJC and channel CJC function.
2. 7021,7022,7024,87022,87024,87026 add AO safe value.
3. Add Modubus Response Delay Time for Modbus modules include Analog input, Analog output and Counter/Frequency I/O modules.
4. Single Line add Modbus RTU Function.
5. Save Map function can save the search result to map file.
6. Open Map function can load the saved result to search form.

[Version 4.3.9] [Oct,31,2005]

New Support Modules:

M87019,M87015,i-87019,i-87015 modbus and DCON protocol modules.
M7024 Analog output module.

M7041,M7045,M7050,M7051,M7052,M7053,M7055,M87063,M87055,M87040,M87041,M87053 modbus DIO modules.

M7015,M7033 modbus protocol modules.

Modify:

7019 module add CJC adjustment for each channel.

7018,87018 add CJC adjustment for each channel.

i-7015,i-7033,i-7013 support new type code 0x2E,0x2F,0x80,8x81.

i-7021,i-7022 support new hex data format.

7080 add new function to set the filter setting to default value.

i-8000 MCU add new function to reverse the DI active status.

Fixed Bug:

debug 7019 when setting type code will show run time error.

when modules' checksum are enabled,it will get the wrong firmware version.

when thermocouple module's AI values are close to -0 ,it will get -0000 under range error code.

i-7005 module can not link to Help file.

Note1:The i-8000 DCON firmware must be A3.05 or above to support the DI active status reverse function.

[Version 4.3.8] [Mar,2,2005]

Fixed Bug:

Install Shield package not include "MSWINSCK.OCX" and
wil get run time error, if Windows\system32\ does not have this file.

[Version 4.3.7] [Feb,1,2005]

New Support Modules:

i-7045,i-7055 I/O modules

M7067 Modbus RTU Protocol modules.

7188EF-016 RFNet modules

WinCon:when 87K module are plugged into WinCon I/O slots.

Modify:

Thermocouple module add CJC enable/disable function.

Note:

i7000.DLL must be ver 5.1.4 to support i-7045,i-7055,7188EF-016 FRNet.

[Version 4.3.6] [Dec,27,2004]

New Support Modules:

i-7051 16 channel DI unit

M7060,M7017,M7018,M7019 Modbus RTU Protocol modules.

Modify:

RunMonitor:

- 1.support Modbus protocol
- 2.add simple data log function

8080 unit:

Each channel can set channel mode independent

7015 add type code 0x2E,0x2F,0x80,0x81

7016 unit:

2-Channel (By Switch):

If 7016 firmware < B1.3

It can not read two channels' value at a time.

It needs to use command \$AA0 or \$AA1 to switch channel
and system need to delay 300 ms each time when program
use #AA to read each channel's value.

In this case,the sampling rate is about 2 Hz.

2-Channel Mode:

If 7016 firmware >= B1.3

When program use command \$AA332 to set 2-channel mode

It can read two channels' values at a time by using #AA.

In this case,the sampling rate is about 2 Hz.

Single Channel:

If 7016 firmware < B1.3

It need to use command \$AA30 or \$AA31 to set to channel 0 or channel

1.

then use command #AA to read the analog value.

In this case,the sampling rate is about 10 Hz.

If 7016 firmware \geq B1.3

It can use command \$AA30 or \$AA31 to set to channel 0 or channel 1.
or use command \$AA330 or \$AA331 to set to channel 0 or channel 1.
then use command #AA to read the analog value.

In this case, the sampling rate is about 10 Hz.

Fix Bug:

87K Analog unit:

87013,87017,87018 can not read AI value when address \geq 1

Note :this bug will take place when these modules are plugged
in 87K I/O Expansion.

Note:

uart.dll must upgrade to 2.1.4 or above to support
M7060,M7017,M7018,M7019

i7000.dll must upgrade to 5.1.3 or above to support i7051 and new 7016
command

firmware must upgrade to A3.0.3 to support new 8080 lib

[Version 4.3.5] [Oct,20,2004]

Fix Bug:

8013(87K) when change SStab page will get error description.

When open 8024(87K) will get run time error.

[Version 4.3.4] [Oct,7,2004]

Supported modules:

7005 unviersal 8 channels thermistor with 6 Digital output module.

Modify:

7011,7012,7014,7016 units support power on value and safe value function.

7011,7012,7014,7016,7033 support LED Display function.

Add Version information at main form.

[Version 4.3.3] [Aug,5,2004]

New support modules:

8050

Note:

DCON Firmware must be A3.0.1 to support 8050

I7000.DLL must be Ver 5.1.2

Uart.DLL has been upgraded to 2.1.1

[Version 4.3.2] [Jun,15,2004]

New support modules:

7015

8080 (*)

(plugged into an I-8000 main control unit)

87082

(plugged into an I-87K expansion unit)

Modify:

1. 7019R write channel status(Enable/Disable) into EEPROM when click check box.
2. 8017H Get rid of filter rejection and data format setting (**)
3. Disable Slew rate setting of 8024 (**)

Fix bug:

1. 8017H can not set alarm to DO module that is plugged in slot4 ~ slot7
2. 7012 can not apply alarm setting function.
3. 7012 DI signal picture can not match the right value.
4. 7014D linear mapping range display can not work properly.
5. Utility can not run on Windows NT4.0.

Note:

* for 8080, the firmware version must be A3.00 or above

** for hardware does not support this function.

Relative Information

Firmware

For RS232,RS485

CD:\NAPDOS\8000\841x881x\firmware

For Ethernet

CD:\NAPDOS\8000\843x883x\TCP\Vxcomm\Server(843x883x)

MiniOs7 image (40MHz):

for 40MHz CPU ==> 8k040330.IMG

CD:\NAPDOS\8000\843x883x\TCP\Vxcomm\Server(843x883x)\os_image\40

MHz

for 80MHz CPU ==> 8e040420.IMG

CD:\NAPDOS\8000\843x883x\TCP\Vxcomm\Server(843x883x)\os_image\80
MHz

[Version 4.3.1] [May,13,2004]

Fix bug:

1. 7019R when setting input range shows run time error 9.
2. 87018 when adjust cjc offset up down shows run time error 340.

Update:

1. firmware must be version A1.98 or above
2. dll must be version 5.0.9 or above
3. uart.dll must be 2.0.5 or above

[Version 4.3.0] [Apr,22,2004]

New support modules:

7019

87040,87041

(plugged into an I-8000 MCU or I-87K expansion unit)

Add new function:

1. All thermocouple modules can display cjc temperature and can adjust cjc offset

include module 7011,7018,7019 and

87018 (plugged into an I-8000 MCU or I-87K expansion unit)

2. all 87k digital input DI count/latch function has

been supported when these modules were plugged into 8K MCU.

Modify:

1. When 87k modules are plugged into the 8k MCU, the module's name will change to 80xx(87K).

Fix bug:

1. 8017H input range was wrongly defined .

Run Data log shows garbage sometimes.

Update:

1. firmware must be version A1.97 or above

2. dll must be be version 5.0.9 or above

3. uart.dll must be 2.0.5 or above

[Version 4.2.9] [Feb. 20,2004]

Supported modules:

8069, 87069

(plugged into an I-8000 MCU or I-87K expansion unit)

Fixed bugs:

Run Data Logger unit:

The generated log file can not be displayed normally
on the English Microsoft Platform

8017,8018 unit:

DO Map Enable/Disable function mismatch
at the High Alarm Setting between channel 1 and channel 7.

Modified:

87K Digital I/O user interface:

1. Combine frm8KDIO and frm87KDIO as frmDIO.

87K digital input DI count/latch user interface:

1. Completely resigned user interface
2. Increase the support for max channel from 16 to 32 channels

8017,8018 unit:

Added message box when setting the high alarm
and low alarm configuration of the 8017,8018 units.

Added new functions:

Terminal->Single Line:

1. Timeout value can be adjusted.
2. 8 set command line lists can be memorized.

Note:

I-8000 MCU Firmware must be version A1.96 or above to support
8069,87069.

[Version 4.2.8] [Jan,05,2004]

Fix bug:

Setting module address error. Modules Address up down button does not work, includes:

7011,7011P,7012,7012F,7013,7014,
7017C,7017FC,7017RC,7017R,7017FR,7017FRC,
7018,7018P

Update:

uart.dll ==> 2.0.5

7000.dll ==> 5.0.9

ICPCON.HLP is replaced by DCON_HELP.chm ver 1.0

Add:

add a module list that the Utility support.

[Version 4.2.7] [Oct,14,2003]

Support modules:

7017C,7017FC,7017RC,7017R,7017FR,7017FRC,
7018BL,
7058,
8037

Modify data logger:

Log_Config.txt (original default.log) ==> to configure how to log data

Log_Report.txt (original report.log) ==> the logged data

The syntax is also changed.

Please refer to the comment in the Log_Config.txt.

Fix bug:

Setting 87017 in 87K expansion unit error.

Update:

uart.dll ==> 2.0.4

i7000.dll ==> 5.0.8

Note: Firmware of I-8000 MCU must be A1.95 to support 8037.

[Version 4.2.6] [Jun,13,2003]

Remove files:

Doesn't copy following files to windows\system.
mfc42.dll, msvcrt.dll, msvcrt20.dll,
oledlg.dll, riched32.dll

Change directory:

Copies following files to DCON_Utility directory
instead of windows\system.
olepro32.dll, oleaut32.dll, stdole2.dll,
asycfilt.dll, msvbvm60.dll

Fix bug:

Cannot recognize the difference between 7018 and 7018P.

[Version 4.2.5] [Apr,25,2003]

Update:

i7000.dll ==> 5.0.6

Support:

1. 87022 (plugged in I-87K expansion unit)
2. 87026 (plugged in I-8000 MCU or I-87K expansion unit)
(command sets are same as 87022)

Note: Firmware of I-8000 MCU must be A1.94

[Version 4.2.4] [Jan,16,2003]

Change name of the Utility to DCON Utility

Update:

i7000.dll ==> 5.0.5

Support:

1. 8077 (command sets are same as 8054)
2. 8017MP (command sets are same as 8017H)
3. 8017LP (command sets are same as 8017H)
4. 87022 (plugged in I-8000 MCU)
(command sets are same as 87024 plugged in I-8000 MCU)

Note:

1. MiniOS7 must update to 1.04 build 012, Dec, 27, 2002
2. Firmware of I-8000 MCU must be A1.93

[Version 4.2.3] [Nov,05,2002]

Fix:

87018 input range support 3 T/C type

1. L-type
2. M-type
3. L-type(DIN43710)

Note:

Firmware of I-8000 MCU must update to version A1.91 or later.

[Version 4.2.2] [Oct,29,2002]

Fix:

[Run-time error: 13]

when click 87017 that plug on 87K expansion unit.

[Version 4.2.1] [Oct,15,2002]

Fix:

[Run-time error: 339]

when click 8K digital mudules that plug on I-8000 MCU.

[Version 4.2.0] [Sep,24,2002]

Update:

i7000.dll ==> 5.0.3

Support:

8040,8041,8042

Add:

Power On Value, Safe Value setting of 8k DO, DIO modules

[Version 4.1.2] [Jul,11,2002]

Update:

uart.dll ==> 2.0.1

i7000.dll ==> 5.0.2

Add:

Excitation voltage configuration for 7016

[Version 4.1.1] [Apr,3,2002]

Add:

Fast Mode for 87017

Filter Setting for 87013

87017

87018

[Version 4.1.0] [Mar,17,2002]

Update:

uart.dll ==> 2.0.0

i7000.dll ==> 5.0.0

Fix:

8013,87013 reads values error.

[Version 4.0.9] [Feb,29,2002]

Support 8058, 87058

Fix:

Checks the COM port before searching.

[Version 4.0.8] [Jan,22,2002]

Fix:

1. searching error when address ≥ 16 (Dec).
2. setting 8017 & 87017 error when address ≥ 16 (Dec).

[Version 4.0.7] [Jan,14,2002]

Upgrade uart.dll 14-Jan-2002 pm 1:39 8.13 Sleep version
to reduce CPU resource consumption.

[Version 4.0.4 Beta2] [Nov,19,2001]

Support 752N

Search 8X3X/8X4X by only one address (skip N-1 address).

[Version 4.0.4] [Oct,20,2001] by Kevin

Fix:

1. Run log file, first line is explain.
For example: "This is test log."
2. Search timeout is too short.

Support 8X3X, 8X4X.

Search 8X3X/8X4X by only one baudrate.

[Version 4.0.3] [Oct,19,2001] by Kevin

Remove auto search function

[Version 4.0.2] [Jul,10,2001]

i7000.dll 10-July-2001 pm 3:14 0460
uart.dll 13-July-2001 pm 5:43 8.1

fix:

1. 8017 T/C input range mapping error
2. 8017 Filter selection error

change:

1. Timeout of open comport change to be 2 seconds
(original timeout is 10 seconds)
2. Install i7000.dll and uart.dll into 7000 Utility directory
(original into windows\system)