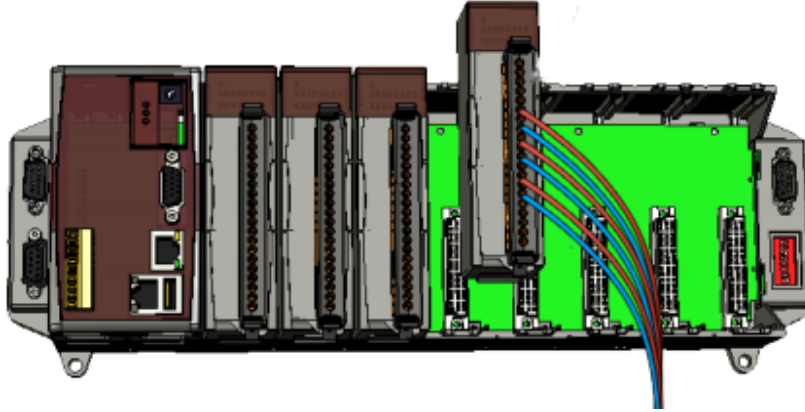


<b>Classification</b>	DCON Utility Pro FAQ				<b>No.</b>	DCON_01_002
<b>Author</b>	Martin	<b>Version</b>	1.0.0	<b>Date</b>	2019/12/03	<b>Page</b> 1/2

## How to back up and restore the I-87K module settings on the PAC host?



When using DCON Utility Pro to search for the modules on the PAC host slot, the following figure contains I-8K (parallel I/O) and I-87K (serial I/O) modules. The parallel I/O module control settings are written in the development program via the SDK (API library), and there is no setting problem. The serial I/O module must set the module through commands. The related settings are stored in the module's EEPROM. Therefore, it is necessary to save the related settings of the module as a file for future replacement when the module is damaged and replaced. DCON Utility Pro provides the function of saving the I-87K module settings as a file, and can restore the settings from the file.

DCON Utility Pro V 3.0.0.1

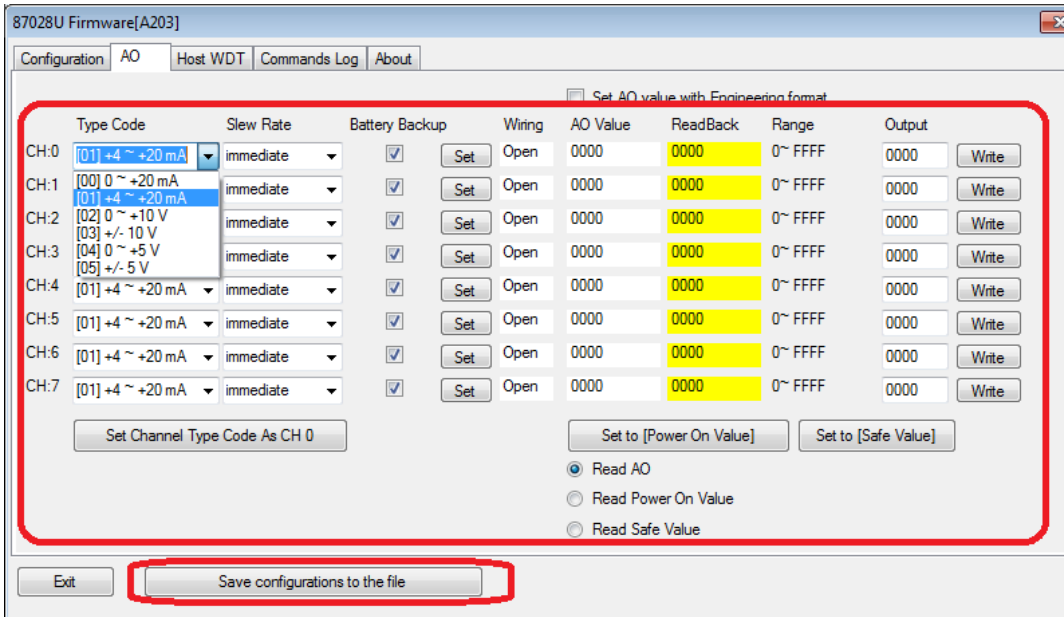
Start Address: 1 End Address: 8  Search RU-87PN Addr. Mode

ID	Address	Baud Rate	Checksum	Format	Status	Description
8014	Slot1	-	-	-	Slot I/O	[8KIO]8/16*AI (mA,mV,V)
8014	Slot2	-	-	-	Slot I/O	[8KIO]8/16*AI (mA,mV,V)
87017	Slot3	115200	Disable	N,8,1	Slot I/O	[DCON]8*AI (mA,mV,V)
87054	Slot4	115200	Disable	N,8,1	Slot I/O	[DCON]8*DI + 8*DO
87028U	Slot5	115200	Disable	N,8,1	Slot I/O	[DCON]8*AO (V)
87017D	Slot6	115200	Disable	N,8,1	Slot I/O	[DCON]8/16*AI (mA,mV,V)

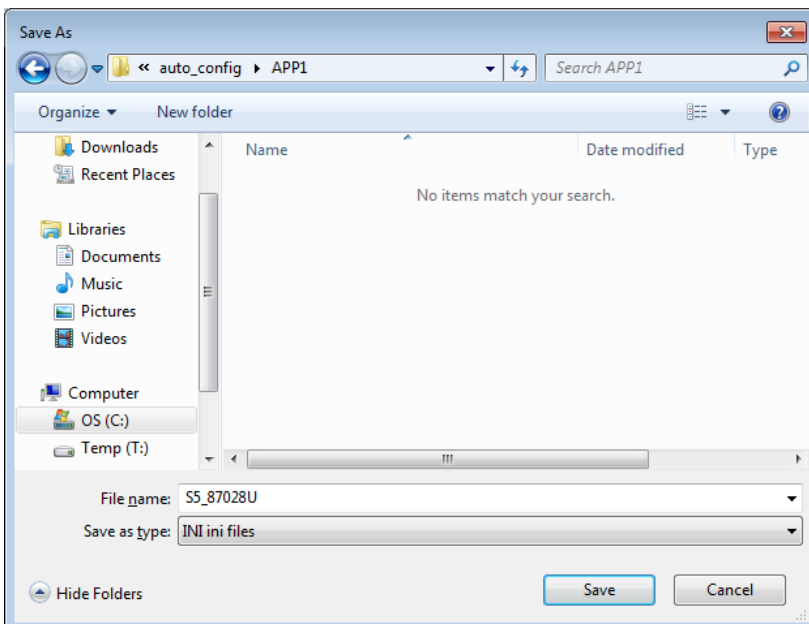
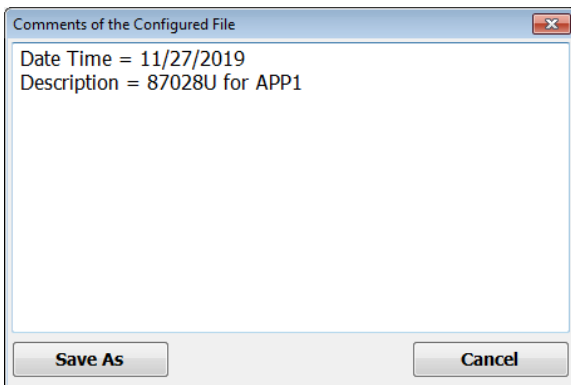
Wait for loading 87028U ....

<b>Classification</b>	DCON Utility Pro FAQ				<b>No.</b>	DCON_01_002	
<b>Author</b>	Martin	<b>Version</b>	1.0.0	<b>Date</b>	2019/12/03	<b>Page</b>	2/2

Step 1: After completing the I-87K module settings, press "Save Configurations to the File".

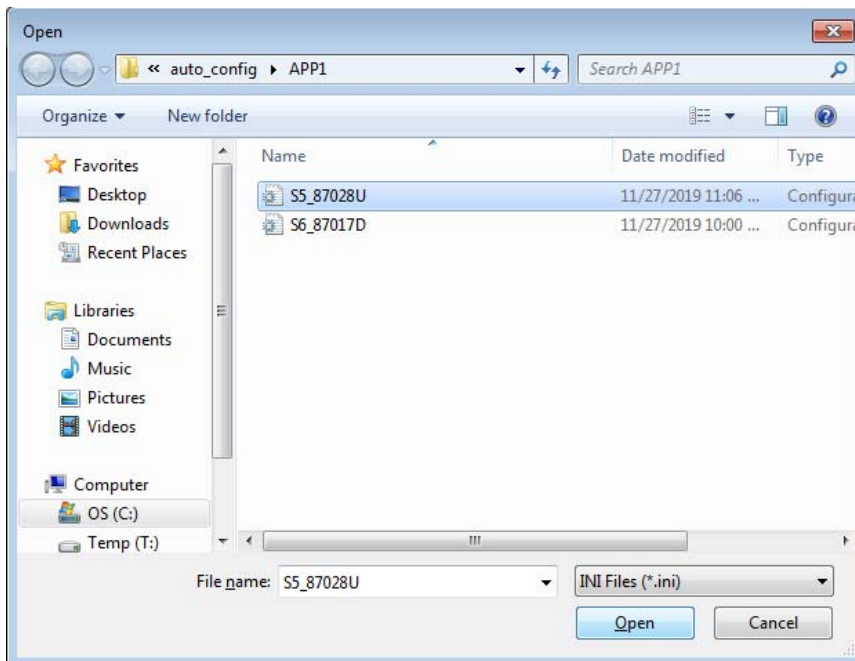
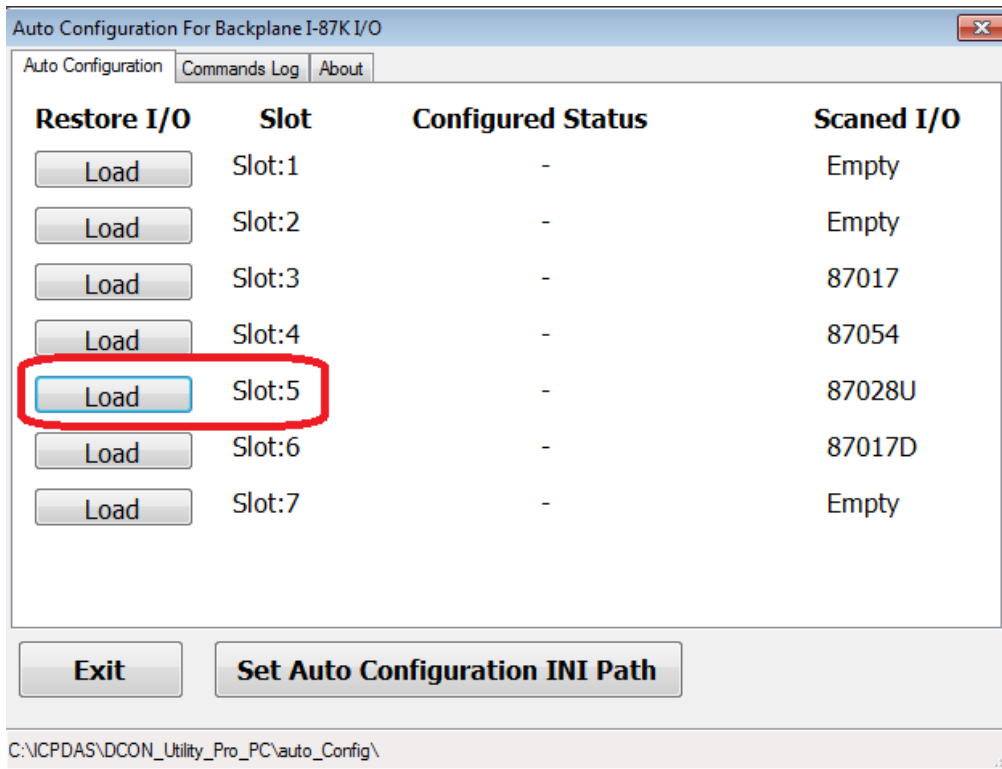


Step 2: You can add notes and create a project folder to complete the module setting file backup.

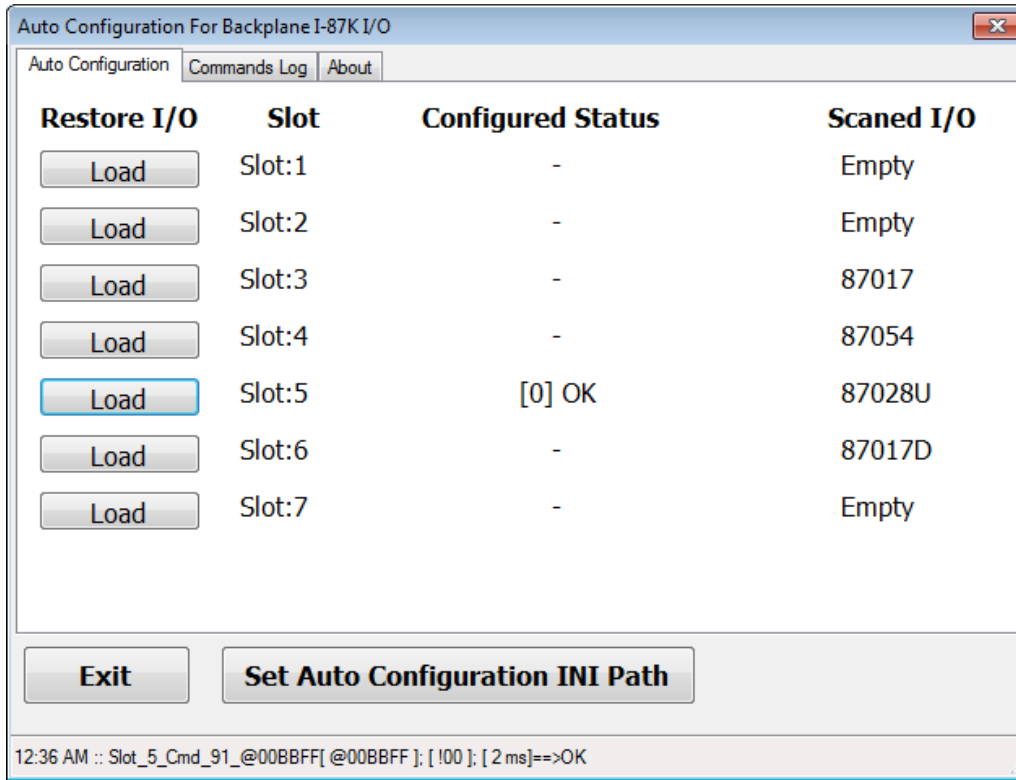


<b>Classification</b>	DCON Utility Pro FAQ				<b>No.</b>	DCON_01_002	
<b>Author</b>	Martin	<b>Version</b>	1.0.0	<b>Date</b>	2019/12/03	<b>Page</b>	3/2

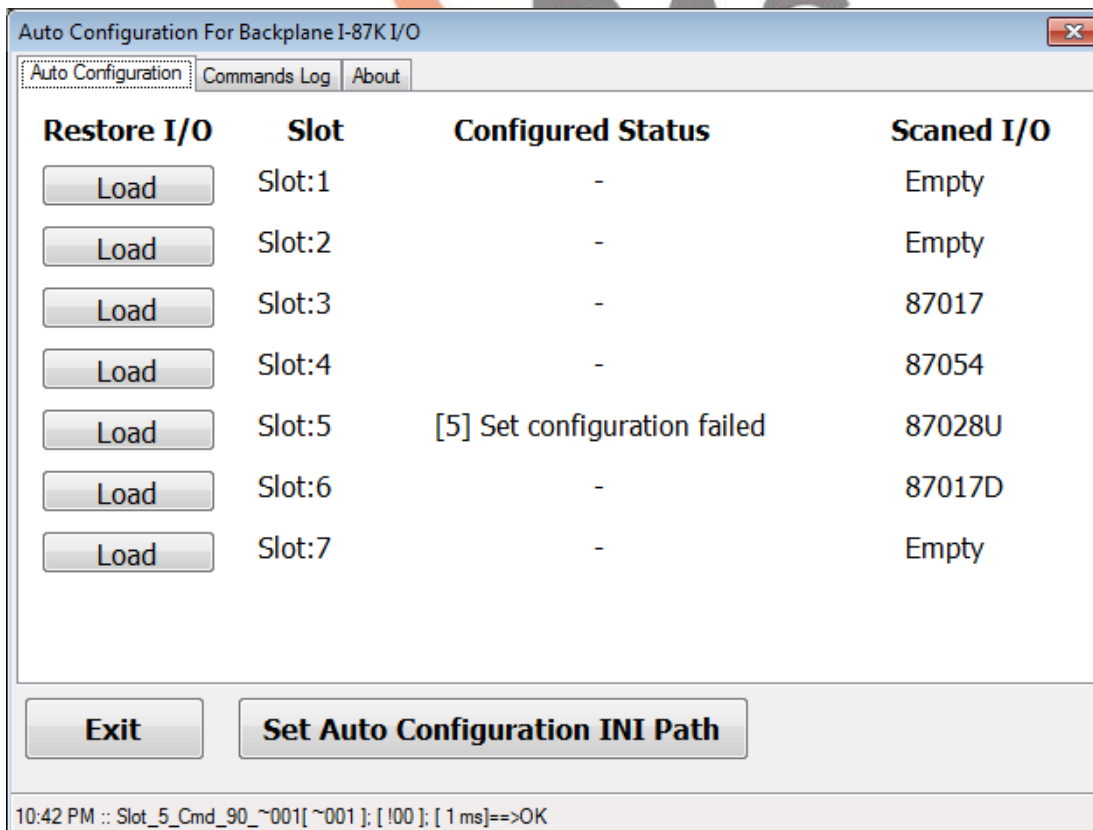
Step 3: To restore the data to the module, simply insert the new module back to the original slot, and open the "Auto Configuration For Backplane I-87K I / O" tool button, and "Load" the previously saved file. Then it can restore the previously saved settings to the module.



<b>Classification</b>	DCON Utility Pro FAQ			<b>No.</b>	DCON_002
<b>Author</b>	Martin/Anna	<b>Version</b>	1.0.0	<b>Date</b>	2019/08/13
				<b>Page</b>	4/2

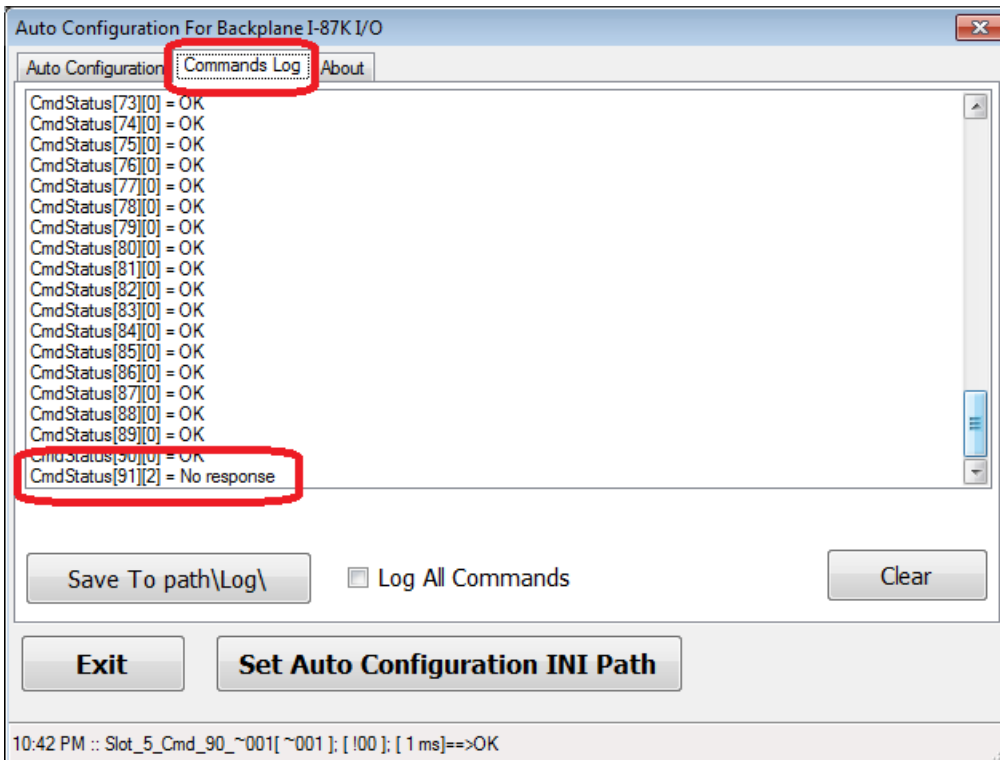


If there is a setting failure, as shown below

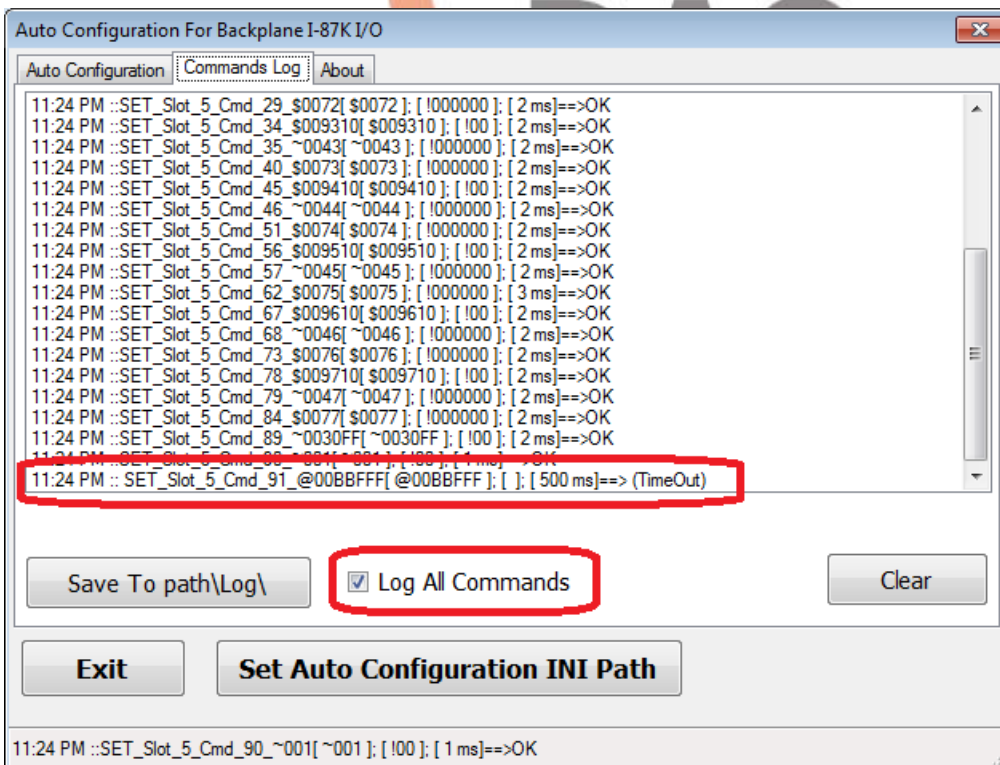


<b>Classification</b>	DCON Utility Pro FAQ				<b>No.</b>	DCON_002	
<b>Author</b>	Martin/Anna	<b>Version</b>	1.0.0	<b>Date</b>	2019/08/13	<b>Page</b>	5/2

Switch to the "Commands Log" tab to see which command has an error



You can also check "Log All Commands" and then "Load" the file again to check the details of the error command.



Then take a screenshot and send the saved ini file to service@icpdas.com. The mailbox will be assisted by the service staff.