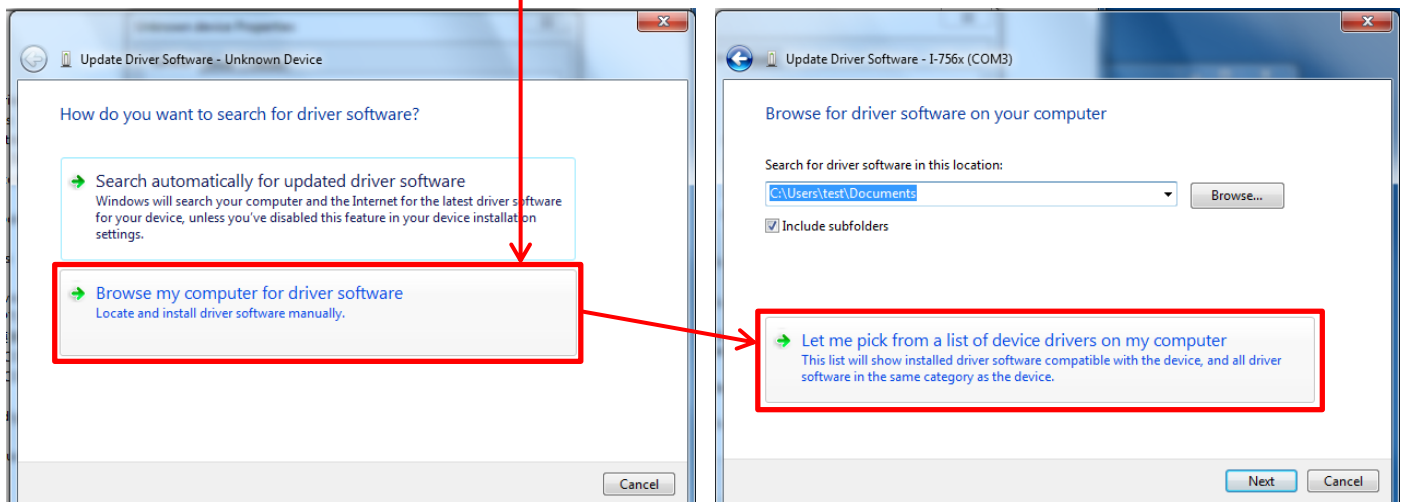
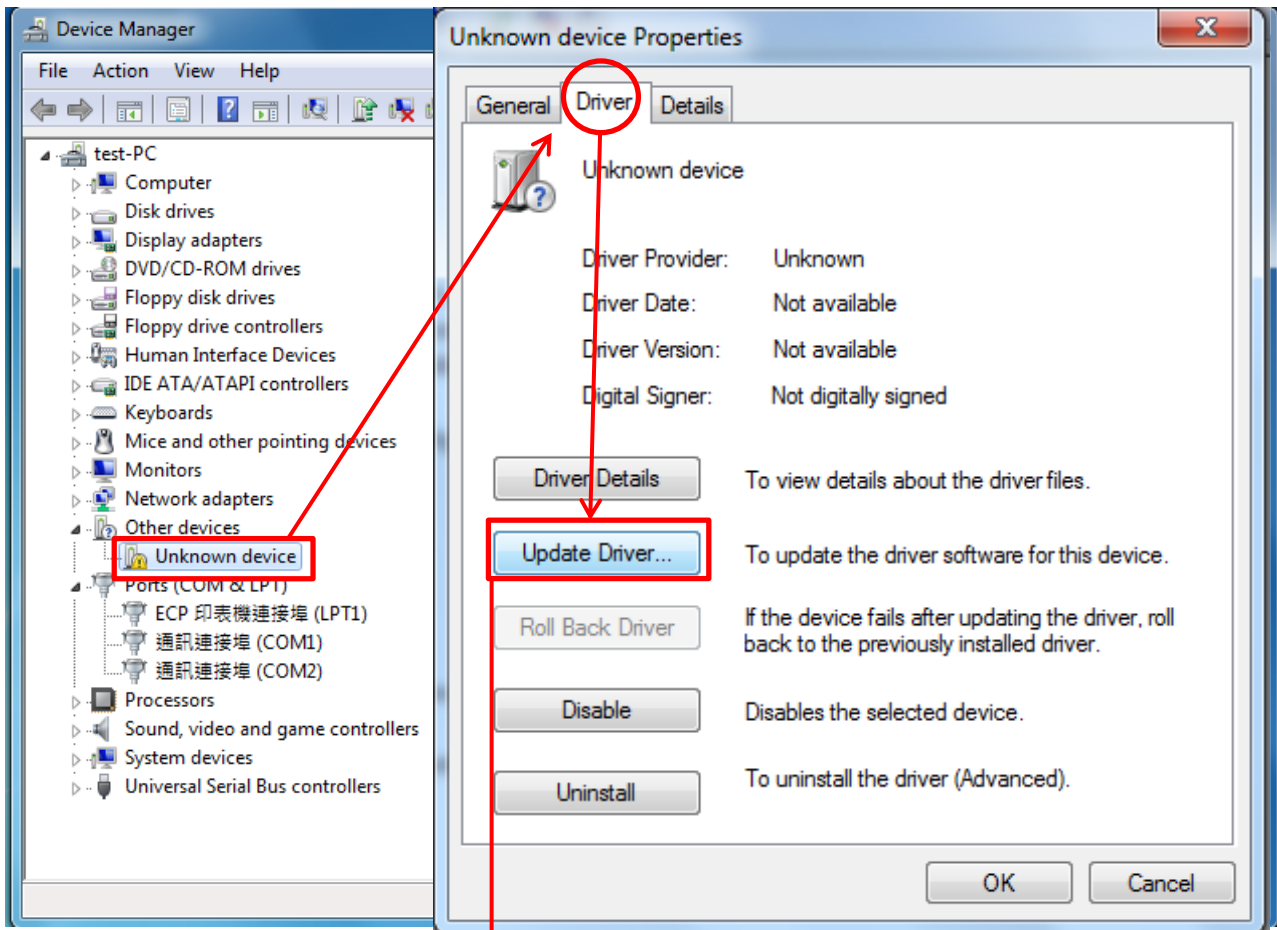
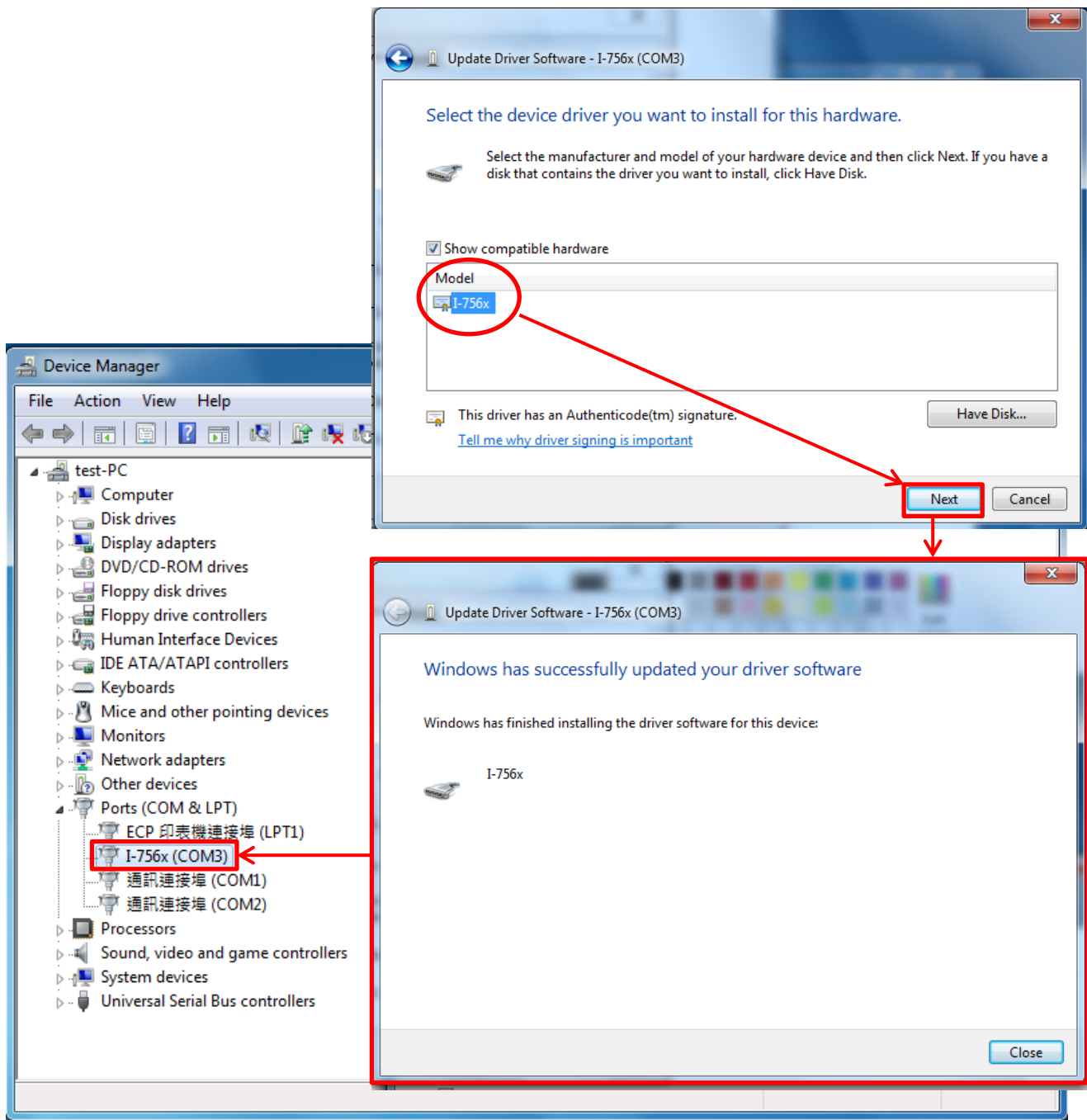


How to install I-7561 (WIN7)

1. Download Driver (i-756x_1223_driverinstaller.exe) from http://ftp.icpdas.com/pub/cd/8000cd/napdos/7000/756x/vista_32_64bit_win7_32_64bit/ and install it. (Must be turn off your internet.)
2. If install error, Please go to Device Manager and Double click the Unknown device.
3. Please step by step follow arrows to finish install.





4. When finish the install, please turn on your internet.