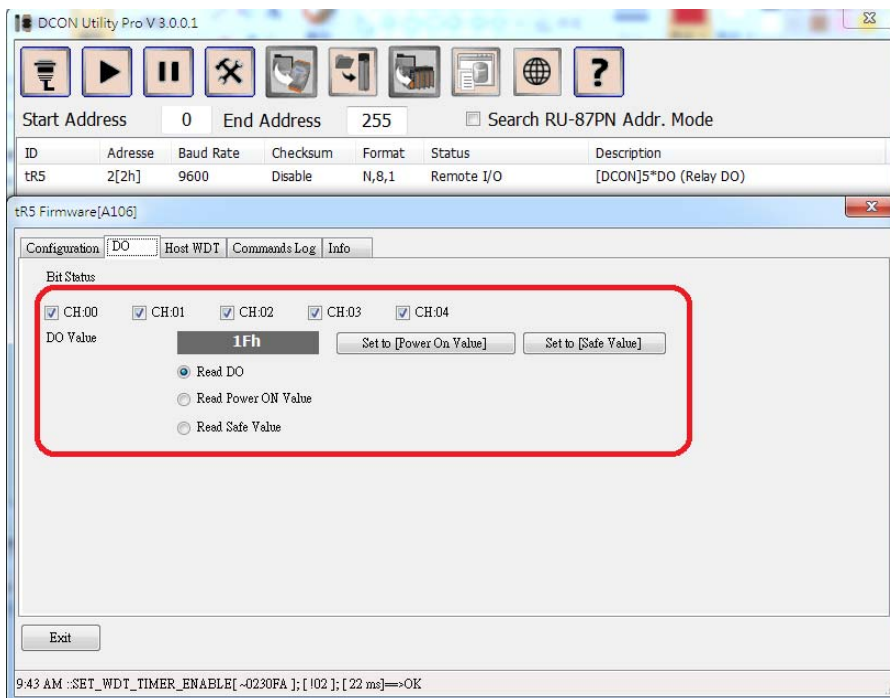


Classification	DCON Utility Pro FAQ				No.	DCON_01_005	
Author	Martin	Version	1.0.0	Date	2019/12/03	Page	1/2

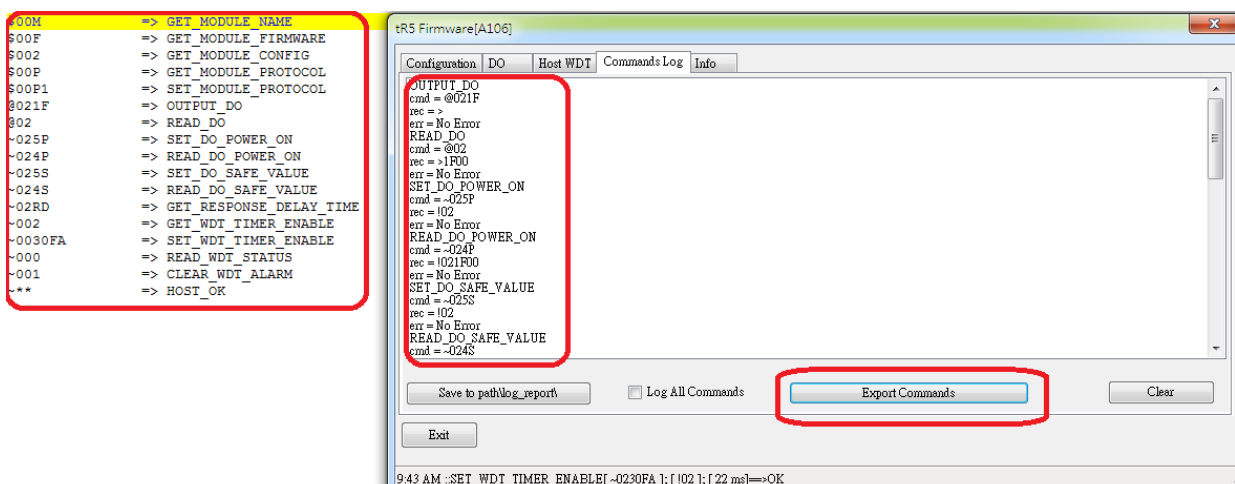
How to query the commands used by the module through DCON Utility Pro?

DCON Utility Pro provides several quick and convenient ways for developers to query the test module usage commands.

1. After searching for the module and entering the setting screen, operate the items you want to know about the command. DCON Utility Pro will record all the command data used last.

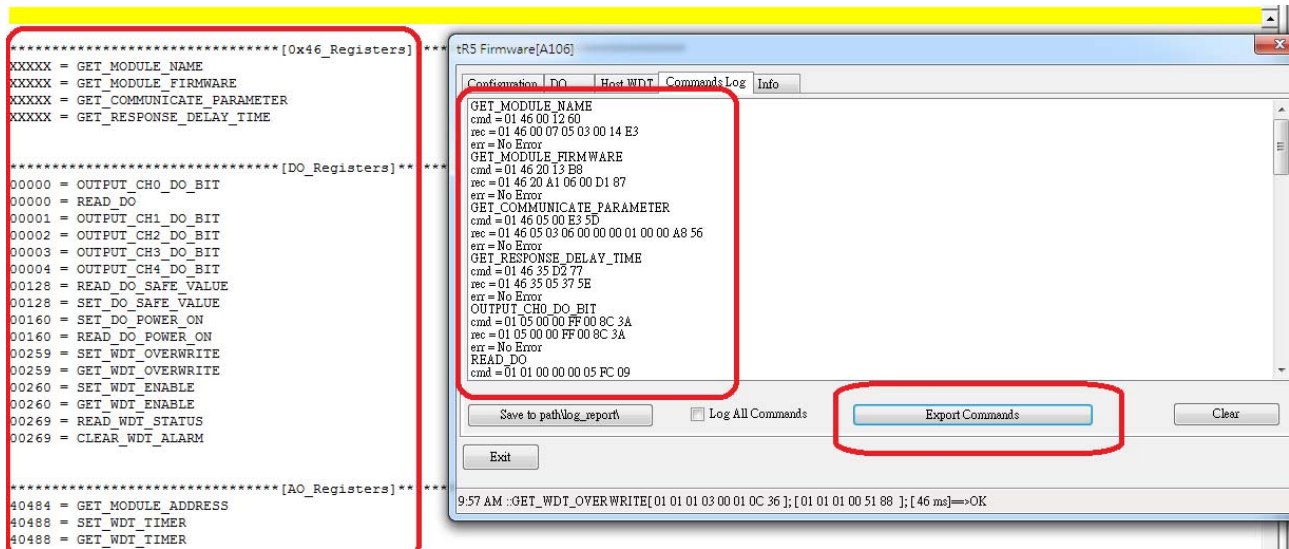


2. Switch to the Command Log tab and press "Export Commands". The program will display all the command data that has been operated and the corresponding command list file. The file path of the DCON module is in DCON Utility Pro \ dcon \.



Classification	DCON Utility Pro FAQ				No.	DCON_01_005	
Author	Martin	Version	1.0.0	Date	2019/12/03	Page	2/2

Modbus module command files are stored in DCON Utility Pro \ modbus \



- Use the "Terminal Command Line" tool of DCON Utility Pro to select the module name according to the searched communication parameters. The relevant commands of this module will appear. Click the command name directly to test directly.

