

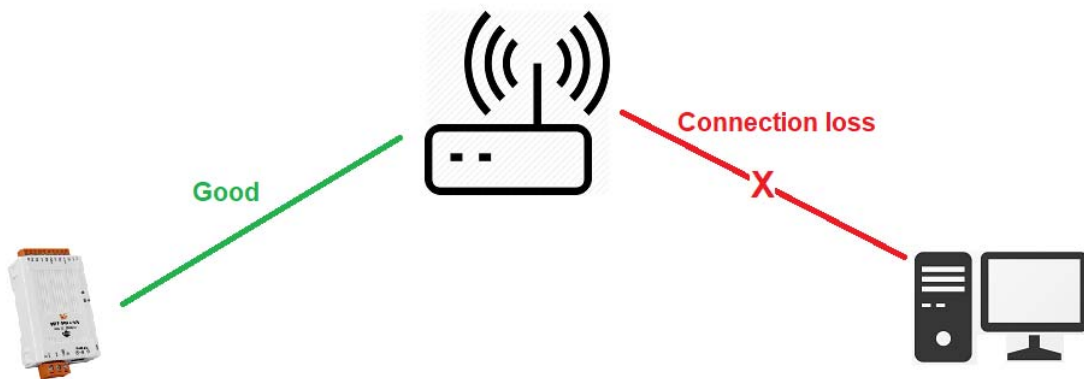


Include product

tWF-PD4R3, tWF-PD4SR2A, tWF-PD4SR2D, tWF-PD8, tWF-R6, tWF-DA1PD2R1
ALM-06-WF

Description of changes

Add timeout for Modbus TCP, connection idle in STA(Station) mode. When both device & Host/Controller connected to an AP(Access Point) in STA mode, if Host/Controller break & loss the connection with AP, it will cause the device hang in a dead connection(device still good with AP, even Host/Controller get back with new connection, but it's not the same socket number as the original). To prevent it happen, set a timeout for device to restart the connection and wait for next connect.



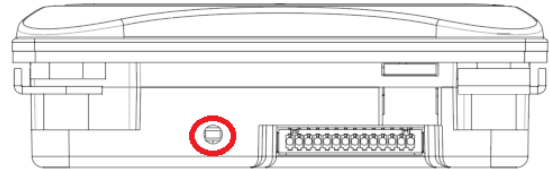
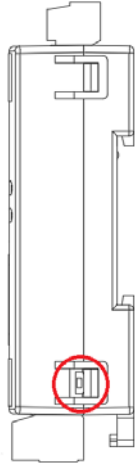
The Idle Timeout for Modbus TCP connection (default is **120 Sec**), user can change it from PC utility, Android APP, HTML or Modbus TCP Command.

For more detail please reference to each User's Manual.

Section	Field	Value	Status
AP	SSID Name	tWF-R6-A48021	
	Key Type	Open	
	SSID Key	[empty]	✓
Station	SSID Name	tWFHUB	
	SSID Key	[empty]	✓
Modbus	Port	502	✓
	Idle Timeout	120 Sec	✓
Location	String	Not Set!!	✓
WiFi Mode	Mode	AP	✓

How to Update

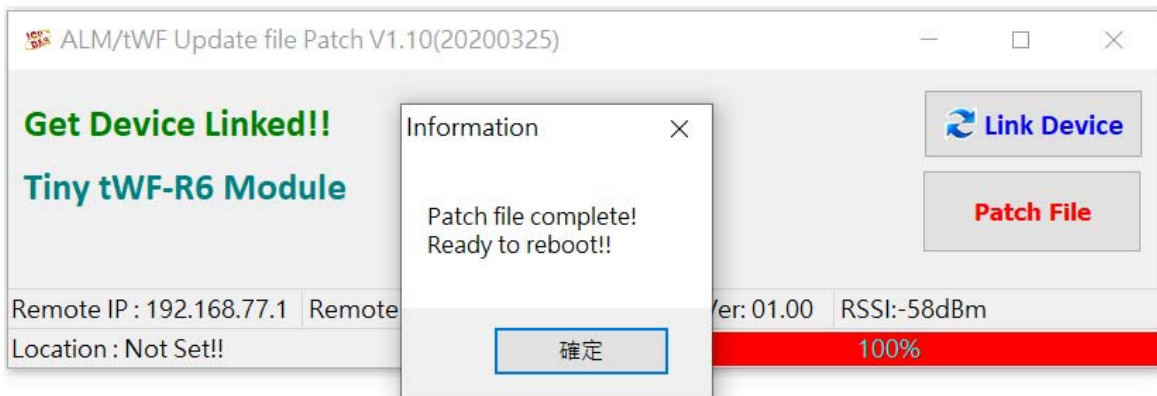
1. Before update, need to restore device back to default setting AP mode.
For more detail please reference to each User's Manual.



2. Unzip file "tWF_update_Patch.zip"
3. Using Wi-Fi connect to your target device, Run "tWF_update_Patch.EXE".
4. Check F/W Version, it must smaller than V1.10.
5. Check Module name whether you are going to update.
6. Press "Patch File" to update the F/W.



7. After update, ready for reboot.





8. After reboot, check the Module name & F/W Version whether correct.

The screenshot shows a software window titled "ALM/tWF Update file Patch V1.10(20200325)". The main area displays "Get Device Linked!!" in green text. Below this, the text "Tiny tWF-R6 Module" is highlighted with a red rectangular box. To the right, there are two buttons: "Link Device" (with a refresh icon) and "Patch File". At the bottom, a status bar contains the following information: "Remote IP : 192.168.77.1", "Remote MAC: 00:0D:E0:A4:80:21", "Ver: 01.10" (highlighted with a red box), "RSSI:-45dBm", and "Location : Not Set!". A red progress bar at the bottom right indicates "100%".