

分類/Classification	<input type="checkbox"/> tDS/tGW/tSH	<input type="checkbox"/> PETL/tET/tPET	<input type="checkbox"/> DS/PDS/PPDS	<input type="checkbox"/> tM-752N	
	<input type="checkbox"/> I/O Card	<input type="checkbox"/> VXC Card	<input checked="" type="checkbox"/> TouchPAD/HMIWorks	<input type="checkbox"/> VxComm	
作者/Author	Tammy	日期/Date	2017-08-21	編號/NO.	FAQ027

Q: How do I migrate project from TPD-280 to TPD-280-H?

Refer to the following instruction.

Please refer to the following table for cross reference information.

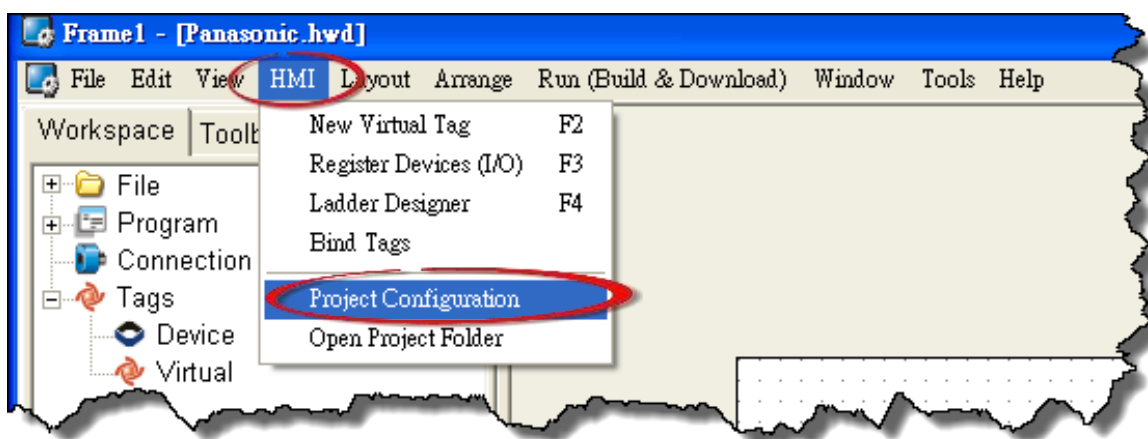
Model Name	TPD-280	TPD-280-H
Product Status	Phased out	Available
Power Input	+10 ~ +30 V _{DC}	+12 ~ +48 V _{DC}
Image Storage Capacity	1	4
Power Consumption	1.2 w	1.5 w

* Image Storage Capacity strongly depends on the content and the size of images.

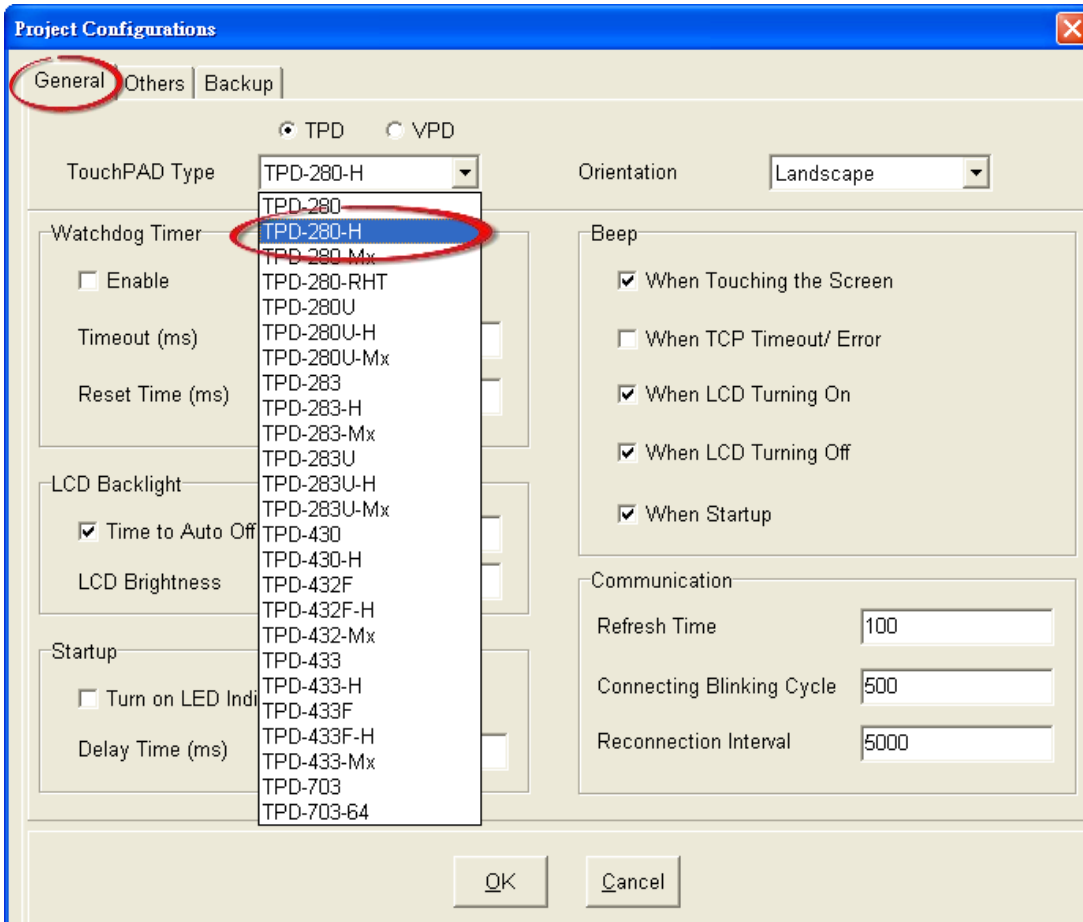
The number in the table shows how many images in full screen size can be stored on the device.

Migrate projects from TPD-280 to TPD-280-H:

1. Open original project by using HMIWorks v2.10.11 or last version.
2. Click the HMIWorks menu item "HMI / Project Configuration".



3. Click the "General" page.
4. Change the "TouchPAD Type" to TPD-280-H.
5. Click "OK" button.



If your original project uses Ladder program, and is created by HMIWorks v2.09.09 or older versions, please follow the **steps 6 - 8** to disable the new Ladder mode.

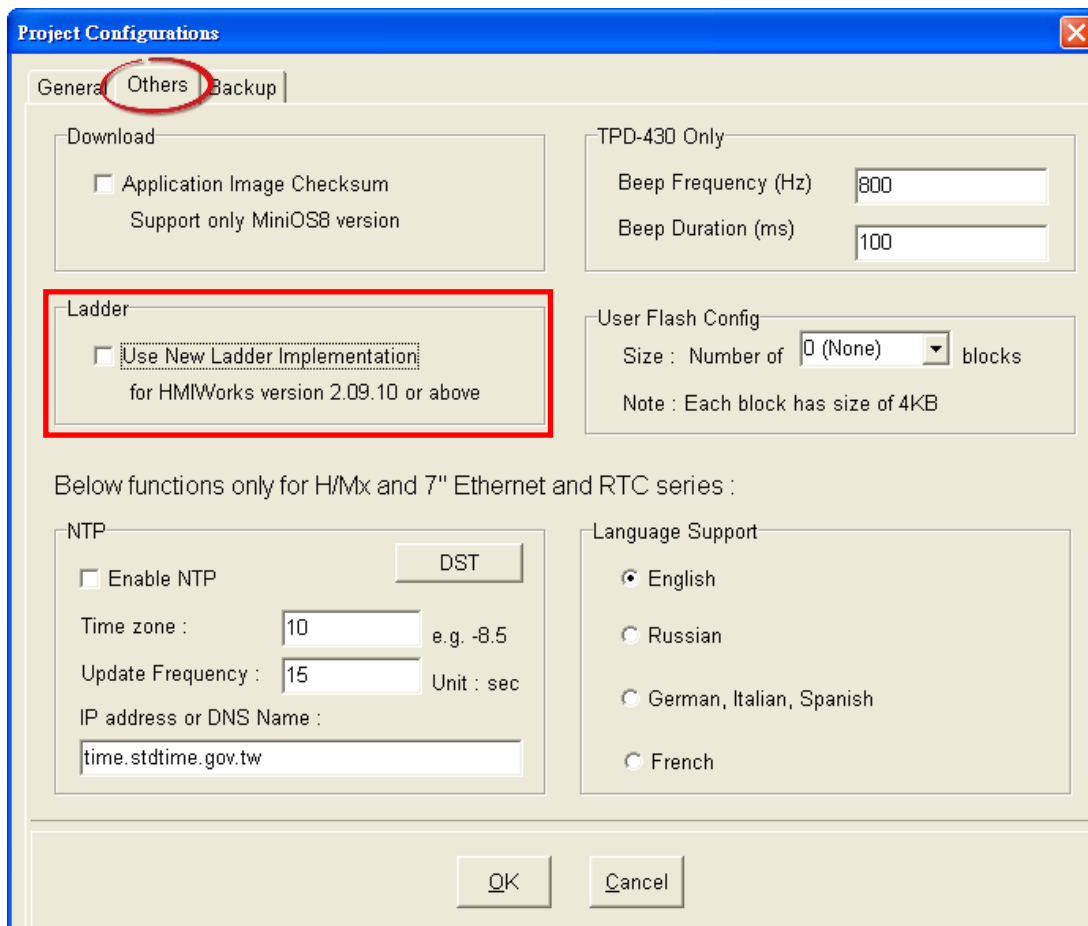
New ladder mode: The Coil-Set and Coil-Reset change the coil state and lock it (industrial standard) until reset or set. Other coil operations will not unlock or change it.

Old ladder mode: There is no lock feature.

6. Click the **"Others"** page.

7. Unchecked the **"Use New Ladder Implementation"** item in the "Ladder" pane.

8. Click **"OK"** button.



9. Click the HMIWorks menu item **"Run(Build & Download)/Build & Render"** to rebuild project or press **F5**.

