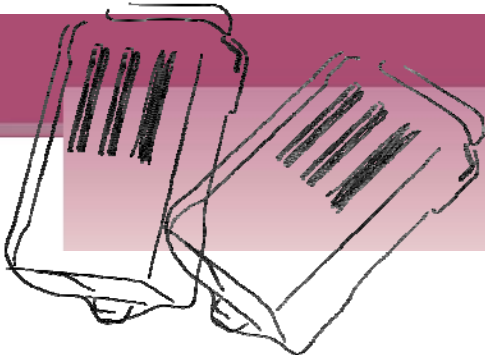


tM-752N SERIES QUICK START GUIDE



For tM-752N Series

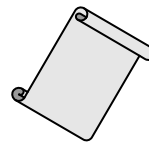
English/ Dec. 2011/ Version 1.0

1 What's in the shipping package?

The package includes the following items:



tM-752N series



Quick Start Guide
(This Document)



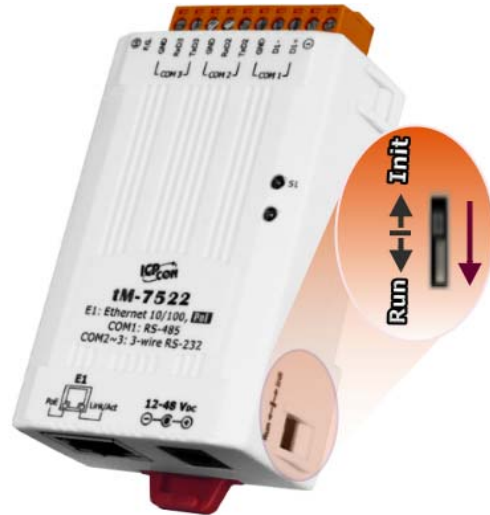
DC Connector
Power cable

2 Connecting the Power and Host PC

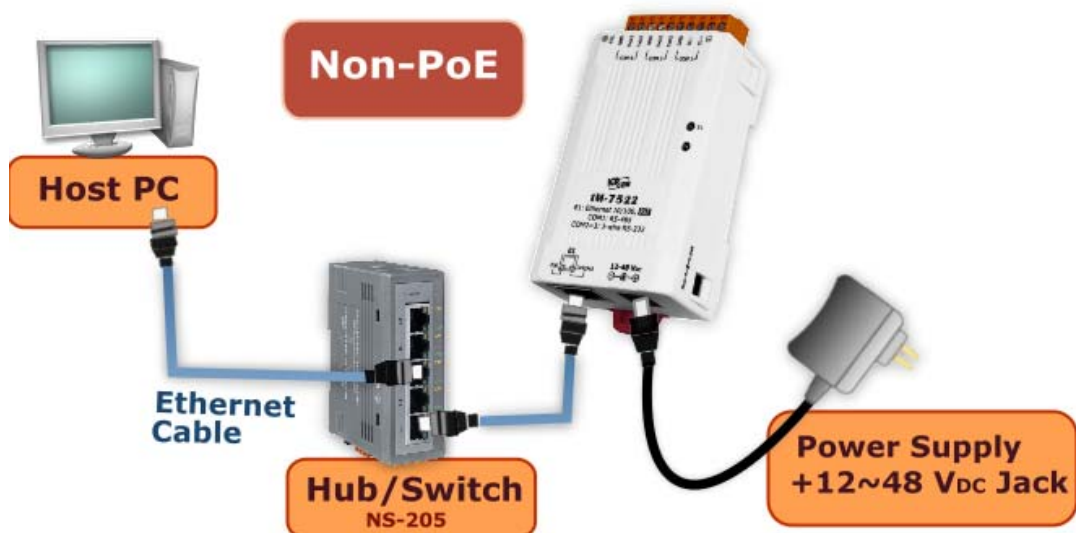
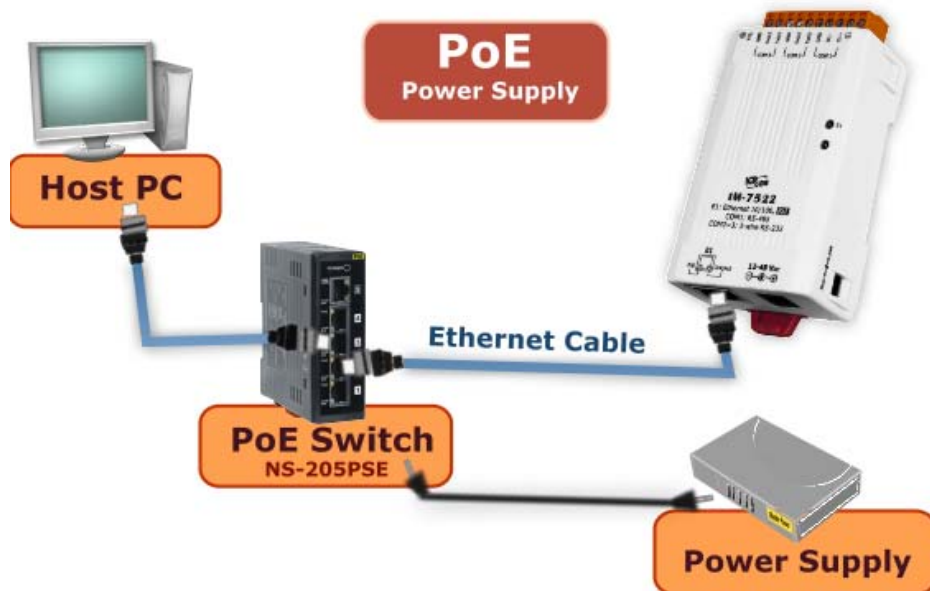
Prepare for device:

- NS-205PSE or NS-205 (optional): Ethernet Switch/Hub.
- tM-7561 (optional): USB to RS-485 Converter.

1. Check Init/Run switch is on **Run** position.

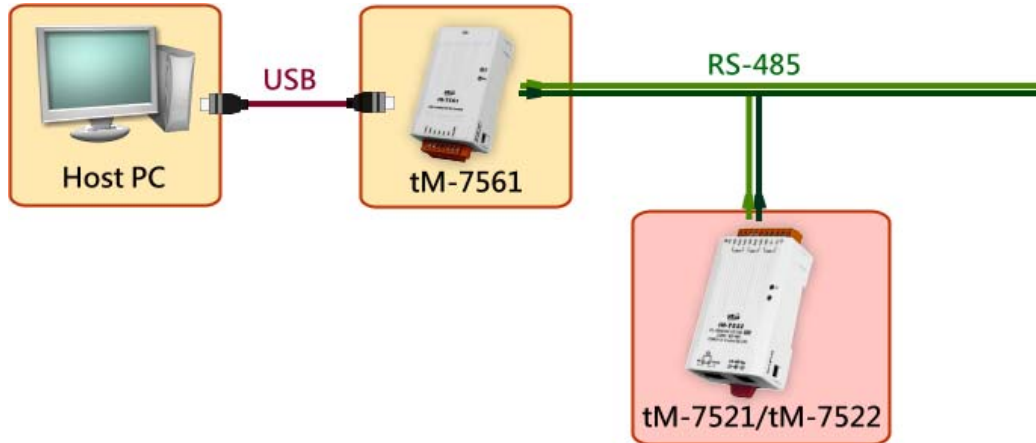


2. Connect both the tM-752N and your computer to the same sub network or the same Ethernet Switch, and power the tM-752N on.



3. Connect the tM-752N module:

- Connect the tM-752N to the RS-485 network as follows:



- Test your tM-752N:

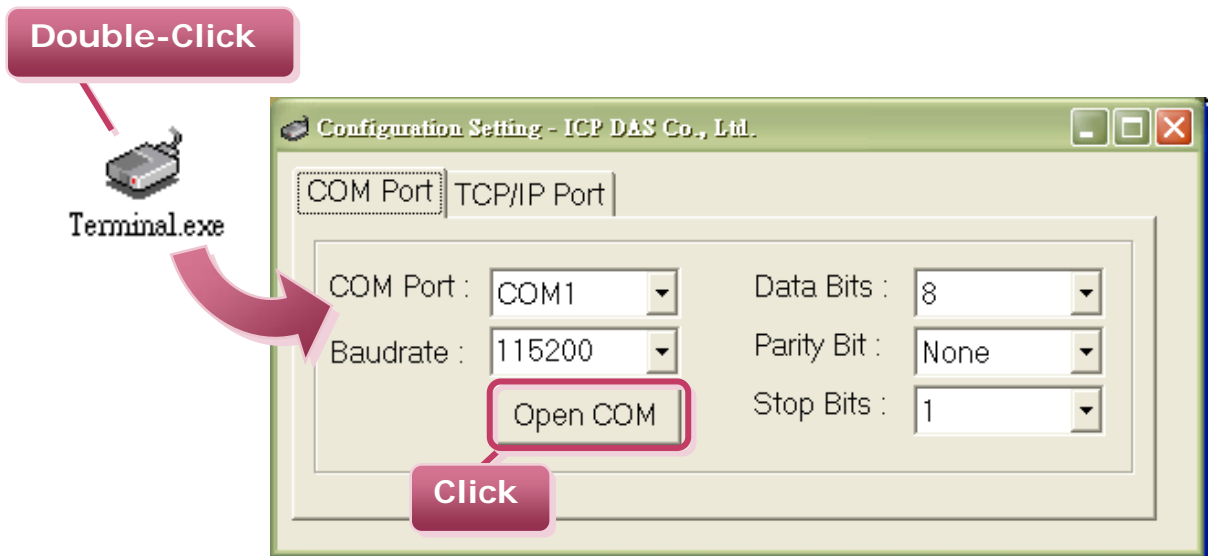
1. Execute the "Terminal.exe".

The Terminal.exe is located at:

<http://ftp.icpdas.com/pub/cd/tinymodules/napdos/software/>

2. Check that the configuration of the COM Port is correct and then click the "Open COM" button.

(Default Settings: 115200,8,N,1)



3. Type a string in the send field then click the “**Send**” button. If a response is received, it will be displayed in the received field.



(Take tM-7522 for example)

Step 1: Retrieve the Module Name of the tM-752N module

Type the command → **\$00M**

Check that the module returns → **!007522**

Step 2: Change the Module Address of the tM-752N module

Type the command → **\$00A02**

Check that the module returns → **!00**

Step 3: Retrieve the Module Name of the tM-752N module

Type the command → **\$02M**

Check that the module returns → **!027522**

Step 4: Retrieve the Module Name of the tM-752N module

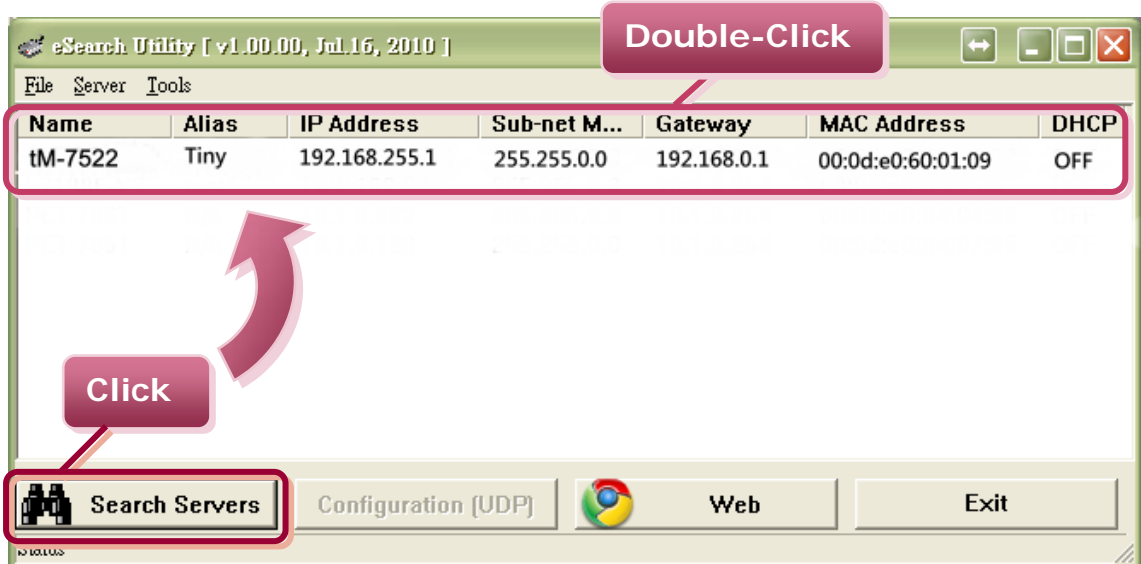
Type the command → **\$00M**

Check that the module returns → **(No response)**

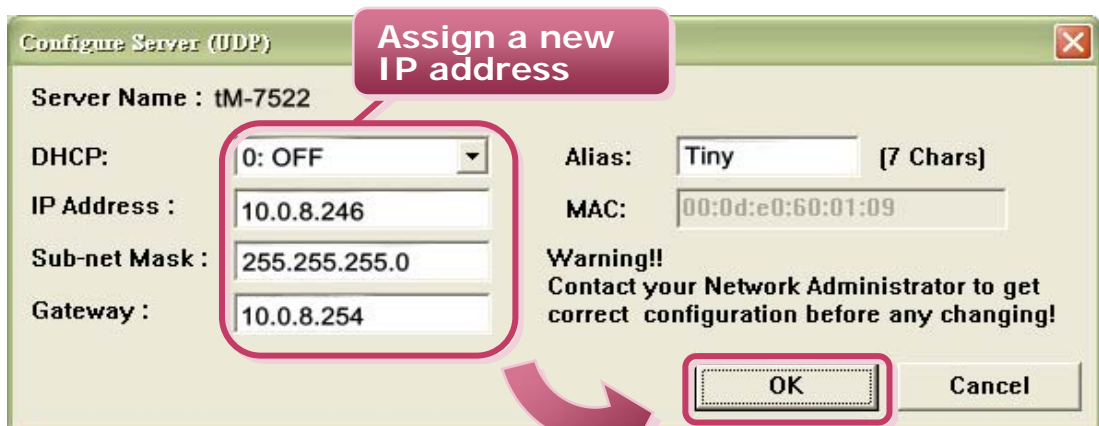
3

Configuring Ethernet Settings

1. Make sure your PC has workable network settings.
2. Disable or well configure your Windows firewall and Anti-Virus firewall first, else the "Search Servers" may not work.
3. Execute the "eSearch.exe". The eSearch.exe is located at:
<http://ftp.icpdas.com/pub/cd/tinymodules/napdos/software/esearch/>
4. Click the "**Search Servers**" button to search your tM-752N.
5. Double click the name of tM-752N to open the configure server dialog box.



6. Contact your Network Administrator to obtain a correct network configuration (such as **IP/Mask/Gateway**). Enter the network settings and then click "OK". The tM-752N will use the new setting 2 seconds later.



7. Wait 2 seconds and then click the “**Search Servers**” button again to ensure the tM-752N is working well with new configuration.

8. Click the “**Web**” button to link the tM-752N web server.

The screenshot shows the eSearch Utility interface. At the top, there is a table with the following data:

Name	Alias	IP Address	Sub-net M...	Gateway	MAC Address	DHCP
tM-7522	Tiny	10.0.8.246	255.255.255.0	10.0.8.254	00:0d:e0:60:01:09	OFF

Below the table, there are three buttons: "Search Servers", "Configuration (UDP)", and "Web". A callout box labeled "1. Click" points to the "Search Servers" button. Another callout box labeled "2. Click your tM-752N on the list" points to the row containing "tM-7522". A third callout box labeled "3. Click" points to the "Web" button. To the right, a browser window shows the URL "http://10.0.8.246/" and the page title "tM-752N Series". The page content includes the ICP DAS logo, navigation links "Home | Port1 | Port2 | Network Se...", and a message: "The system is logged out. To enter the web configuration, please type password in the". Below this is a "Login password:" field with a masked password "....." and a "Submit" button.

9. Enter the password and click the “**Submit**” button to enter the configuration web page. (The factory default password: **admin**)



tM-752N Series

[Home](#) | [Port1](#) | [Port2](#) | [Network Setting](#) |

The system is logged out.

To enter the web configuration, please type password in the follo

Login password:



10. Besides the DCON command, you can configure all settings via web browser.



tM-752N Series

[Home](#) | [Port1](#) | [Port2](#) | [Network Setting](#) | [Filter](#) | [Change Password](#) | [Logout](#)

Status & Configuration

Model Name:	tM-7521	Alias Name:	Tiny
Firmware Version:	v1.0.0 [Sep.02, 2011]	MAC Address:	00-0D-E0-80-12-22
IP Address:	10.1.0.47	System Address:	0x00 (0)
Initial Switch:	OFF	System Timeout (Serial Watchdog, Seconds):	300

Current port settings:

Port Settings	Port 1	Port 2
Baud Rate (bps)	115200	115200
Data Size (bits)	8	8
Parity	None	None
Stop Bits (bits)	1	1
Flow Control	None	None
Serial Ending Chars	-	-
Port ID	0x00 (0)	0x00 (0)
Delimiter	:	:
Response Timeout (ms)	1000	1000
Continue Response Timeout (ms)	-	0

Related Information

- **tM-752N Series Product page:**
<http://www.icpdas.com/products/Industrial/pds/tM-752N.htm>
- **tM-752N Documentations:**
CD:\Napdos\tM-752N\document\
<http://ftp.icpdas.com/pub/cd/tinymodules/napdos/tM-752N/document/>
- **tM-752N firmware:**
CD:\Napdos\tM-752N\Firmware\
<http://ftp.icpdas.com/pub/cd/tinymodules/napdos/tM-752N/firmware/>
- **NS-205PSE, NS-205 and tM-7561 page (optional):**
<http://www.icpdas.com/products/Switch/industrial/ns-205.htm>
<http://www.icpdas.com/products/Switch/industrial/ns-205pse.htm>
http://www.icpdas.com.tw/product/solutions/industrial_communication/converter/tm-7561.html



ICP DAS Web Site: <http://www.icpdas.com>
Contact Us (E-Mail): service@icpdas.com , service.icpdas@gmail.com