
eSearch Utility

Linux 使用者手冊

Warranty

All products manufactured by ICP DAS are warranted against defective materials for a period of one year from the date of delivery to the original purchaser.

Warning

ICP DAS assume no liability for damages consequent to the use of this product. ICP DAS reserves the right to change this manual at any time without notice. The information furnished by ICP DAS is believed to be accurate and reliable. However, no responsibility is assumed by ICP DAS for its use, nor for any infringements of patents or other rights of third parties resulting from its use.

Copyright

Copyright 2010 by ICP DAS. All rights are reserved.

Trademark

The names used for identification only may be registered trademarks of their respective companies.

Tables of Contents

1. 在 Linux 系統使用“Wine”執行 eSearch Utility	3
1.1 在 linux 系統安裝“Wine”軟體套件	3
1.2 在 Linux 系統執行 eSearch Utility	4

1. 在 Linux 系統使用“Wine”執行 eSearch Utility

“Wine” Windows 模擬器,可提供 Linux 系統平台執行 Windows 應用程式. 針對 eSearch utility, 建議執行步驟請參考章節 1.1 ~ 1.2

1.1 在 linux 系統安裝“Wine”應用程式

(1) Red Hat Linux system(請參考圖 1-1)

- 使用以下指令自動在 Red Hat Linux 系統安裝“Wine”應用程式.

```
#yum install wine
```

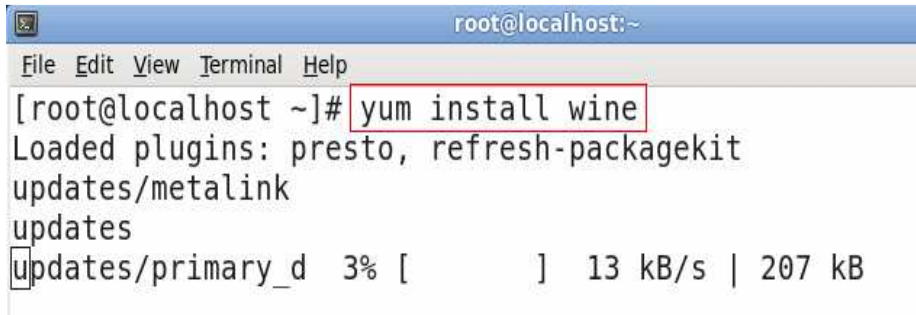


圖 1-1

(2) 其它 Linux 系統

- 下載“wine”軟體原始碼

請參考“wine”官方網站 <http://www.winehq.org/>

- 編譯安裝“wine”軟體原始碼

```
#tar xvf wine-X.X.X.tar.bz2  
#cd wine  
#./configure  
#make  
#make install
```

1.2 在 Linux 系統執行 eSearch Utility

- 輸入以下命令執行 “eSearch.exe” (請參考圖 1-2).

```
#tar xvf eSearch_UTILITY.tgz
```

```
#cd eSearch_UTILITY
```

```
#wine eSearch.exe
```

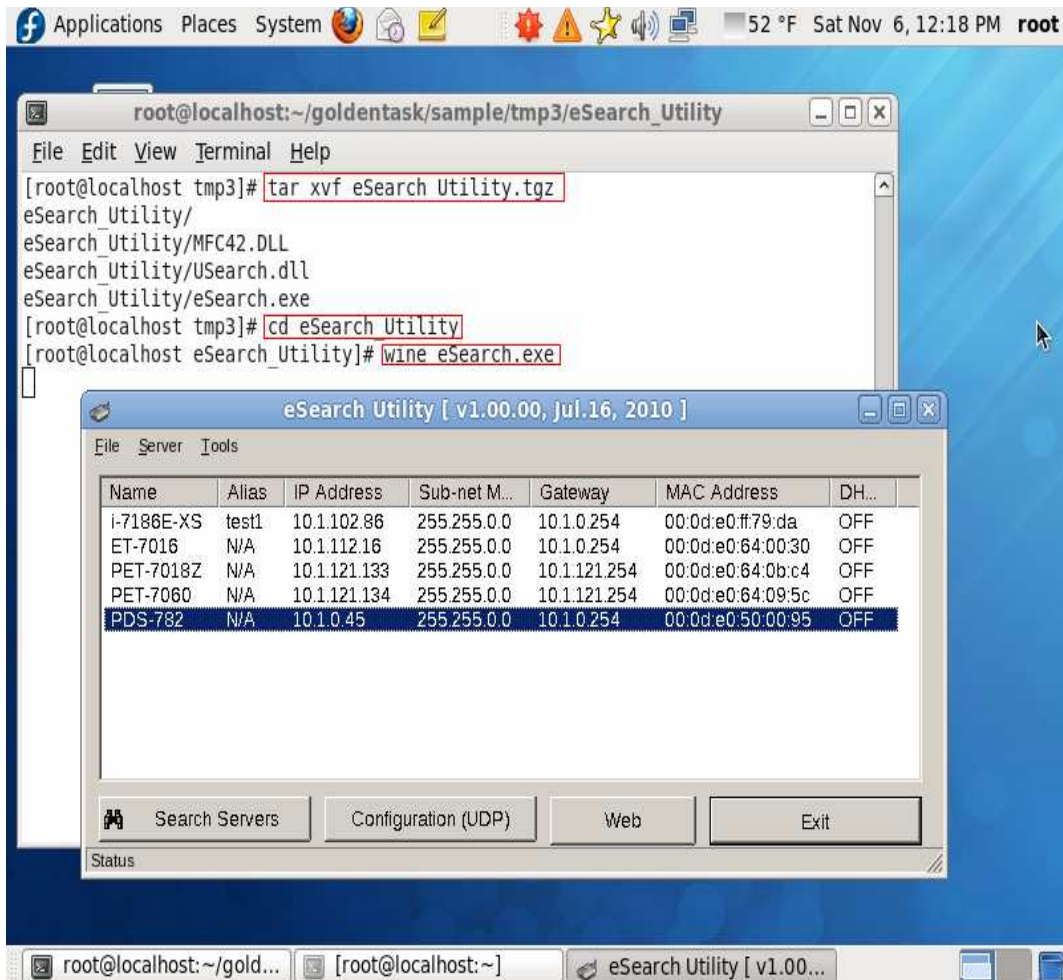


圖 1-2