

VMware Server

Download:

http://downloads.vmware.com/d/info/datacenter_downloads/vmware_server/2_0

VMware Player (Recommend)

Download:

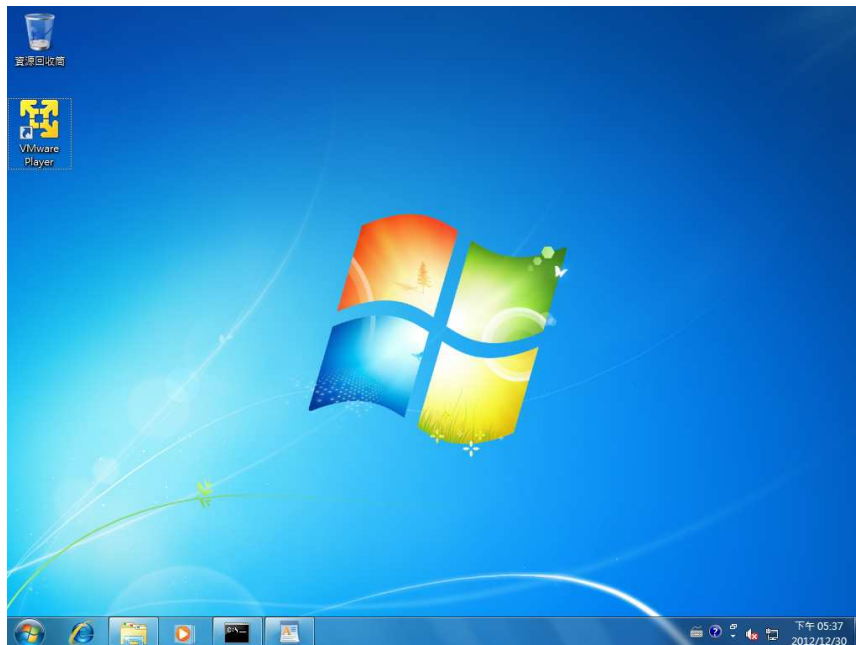
https://www.vmware.com/tryvmware/?p=player&lp=1&q=vmware%20player&sourceid=navclient-ff&rlz=1B3MOZA_zh-TWTW408TW409&ie=UTF-8

Install VMware Player 3.1

Run VMware-player-3.1.3-324285.exe , and install VMware Player 3.1



After installation, the VMware Player linker show on the desktop.



Create Virtual Machine

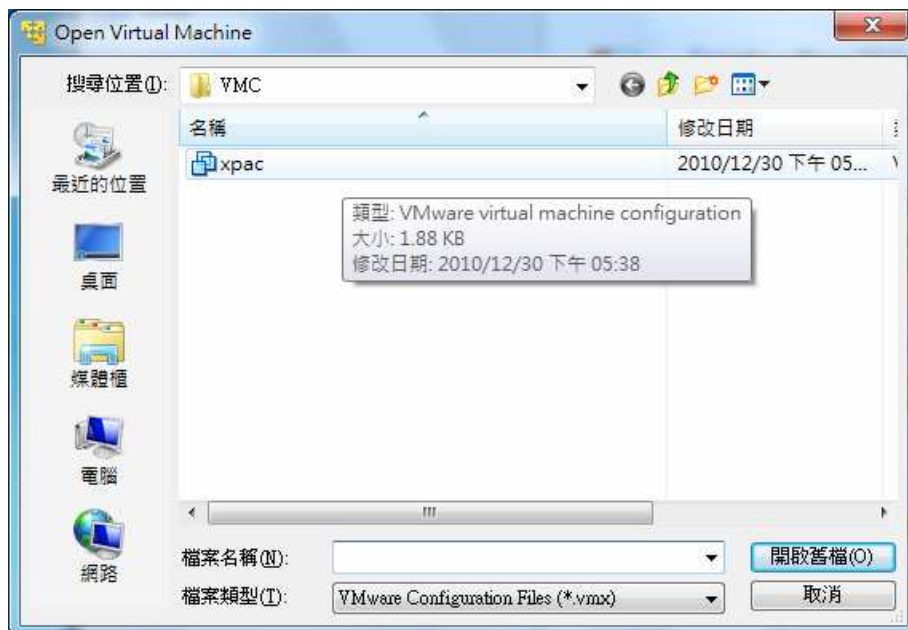
Step 1. Copy VMC folder to the local PC, such as C:\VMC

Step 2. Run VMware Player on the desktop and the windows below will be shown.

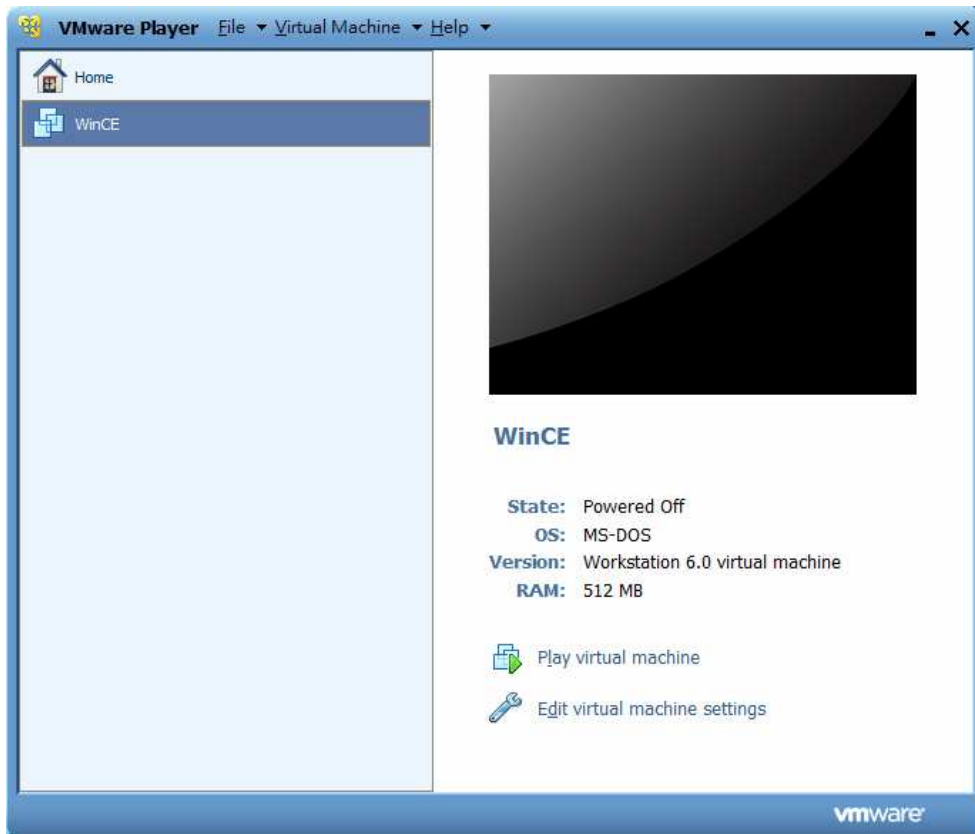


Step 3. Click “Open a Virtual Machine”

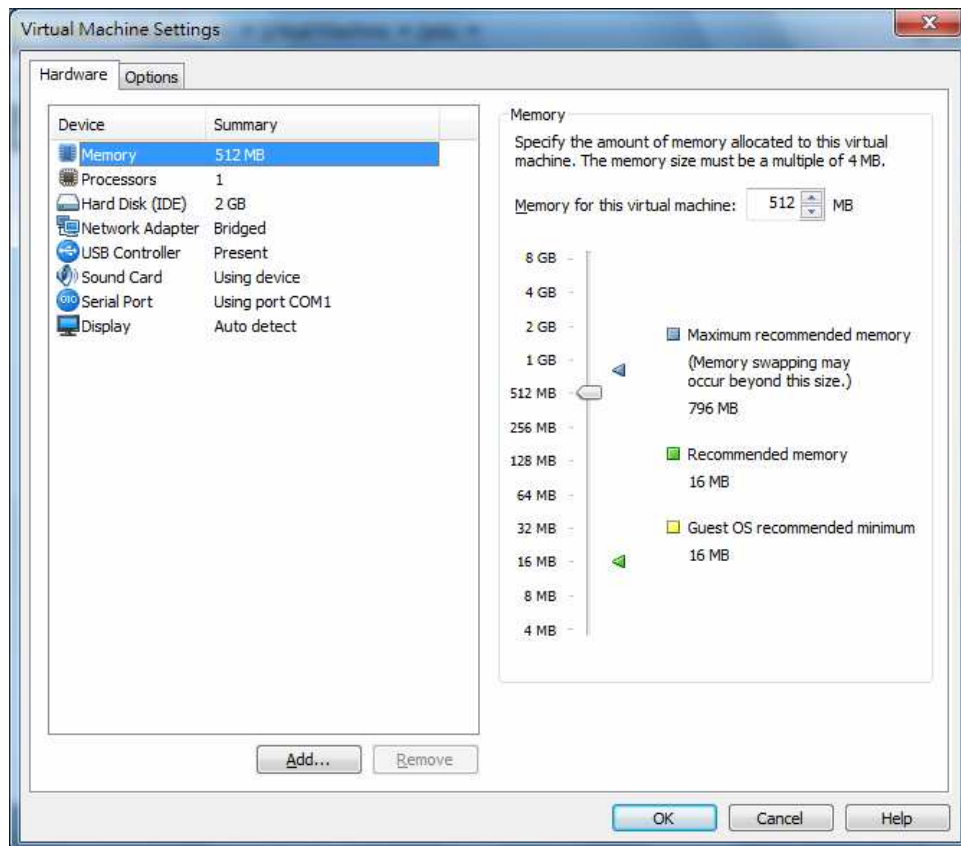
Step 4. Choose xpac.vmx on the C:\VMC



Step 5. The windows below show as following

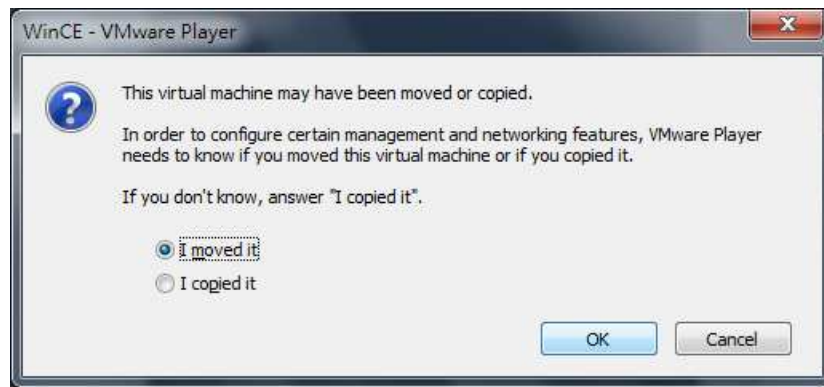


Step 5. Click “Edit virtual machine settings”, and check the settings.

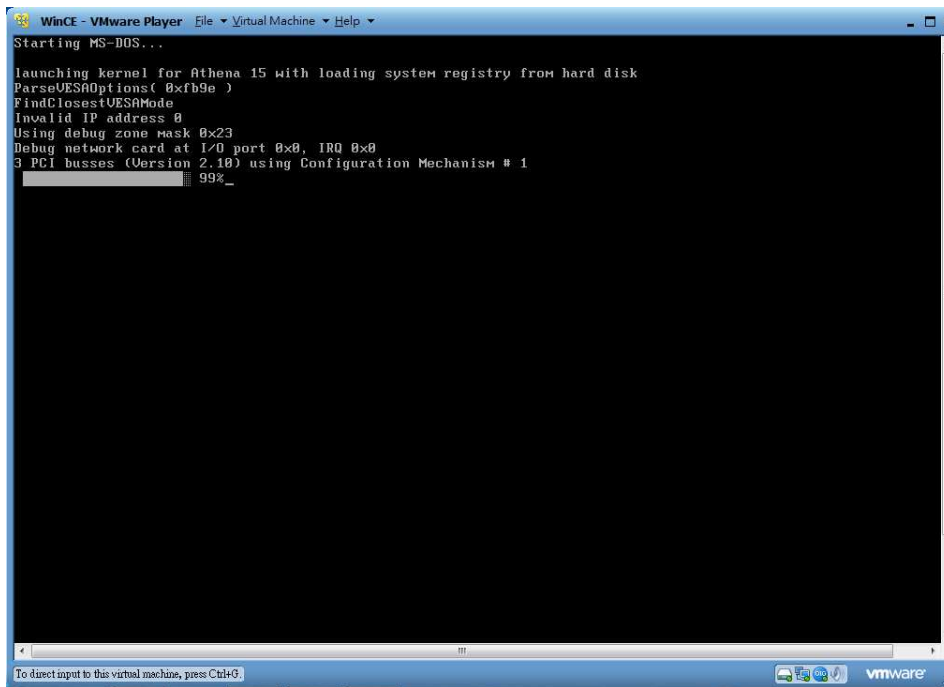


Step 6. Click “OK” button to end

Step 7. Click “Play virtual machine” and select “I moved it” and press OK button.



Step 8. Load the XPAC image file, and start windows CE 6.0.



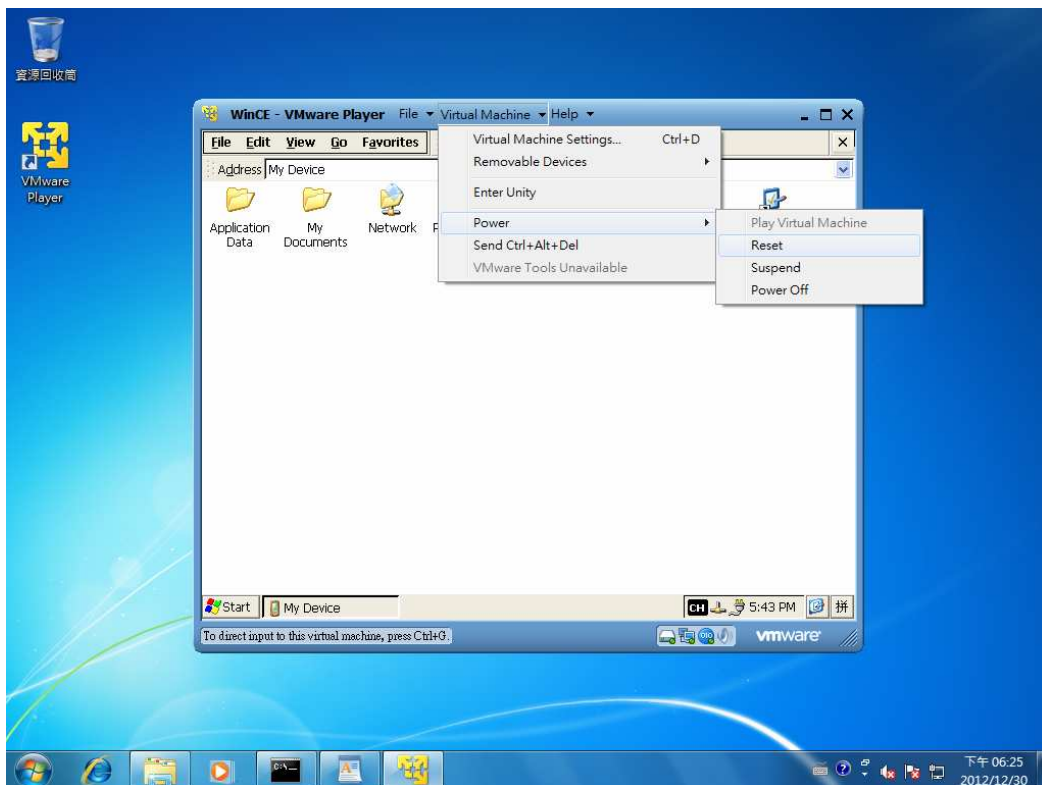
Step 9. Load successfully. The windows below will be shown as following ◦ (The loading speed is depend on the Hardware speed)

(The default VGA resolution for this image is 1024*768.)

(Press Ctrl+ALT key to switch the PC and VMware environment.)

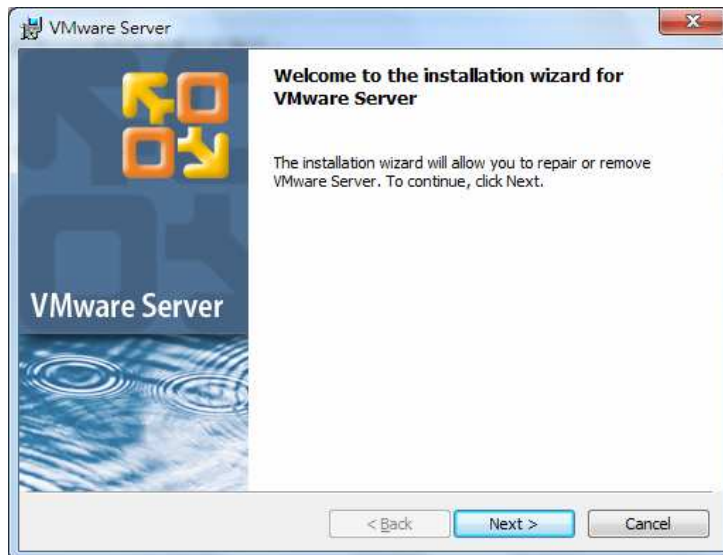
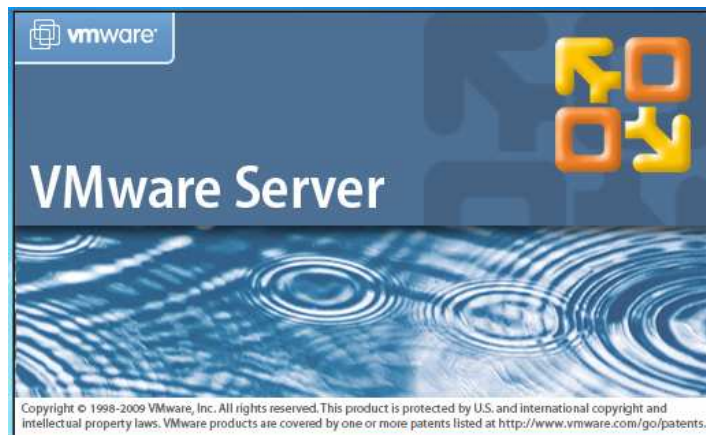


Note: Click Virtual Machine → Power → Reset to reload the XPAC image.

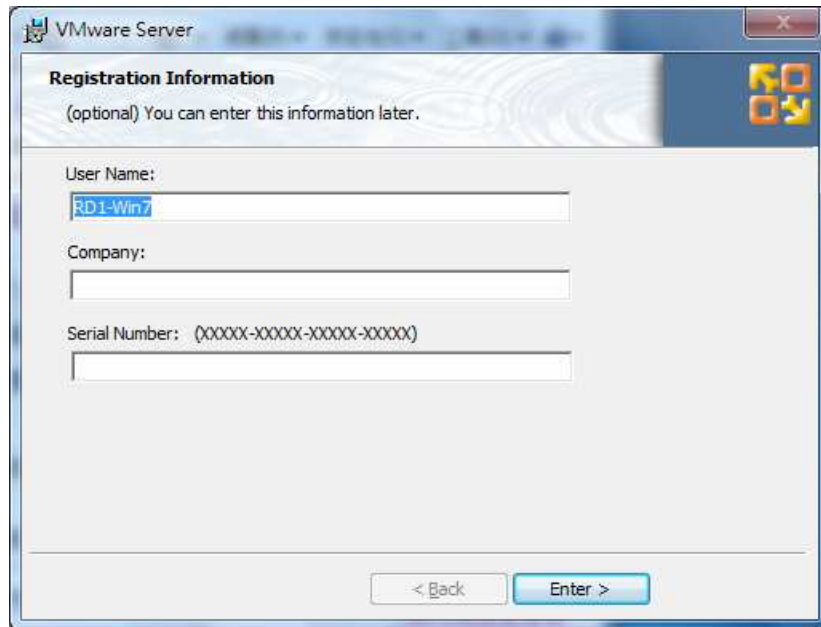


Install VMware server 2.0.2

Run VMware-server-2.0.2-203138.exe and install VMware server 2.0.2



Input Serial number (Ask for from vmware <https://www.vmware.com/tryvmware/?p=server20&lp=1>)



Click Finish button and reboot.

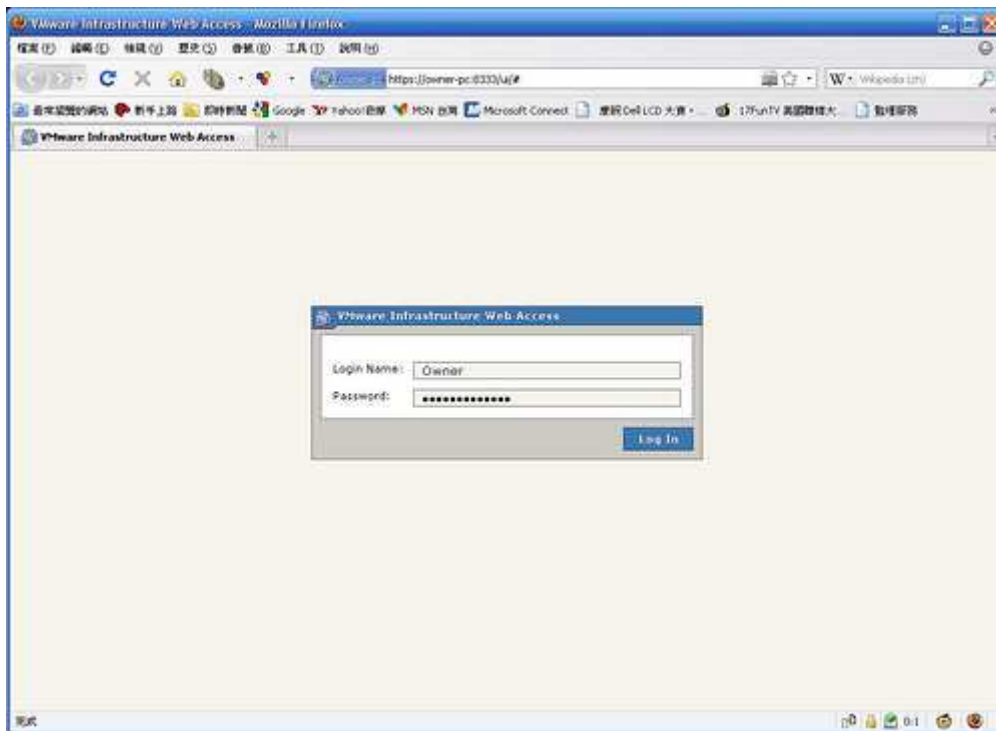
Create Virtual Machine

Step 1. Copy VMC folder to the local PC, such as C:\VMC

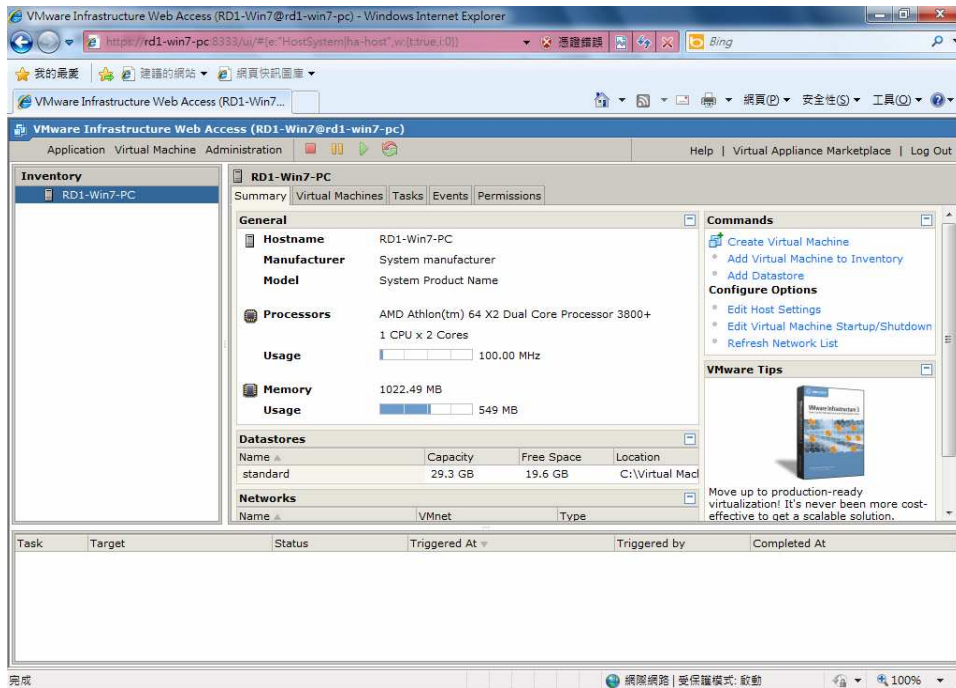
Step 2. Run “VMware Server Home Page” shortcut on the desktop.



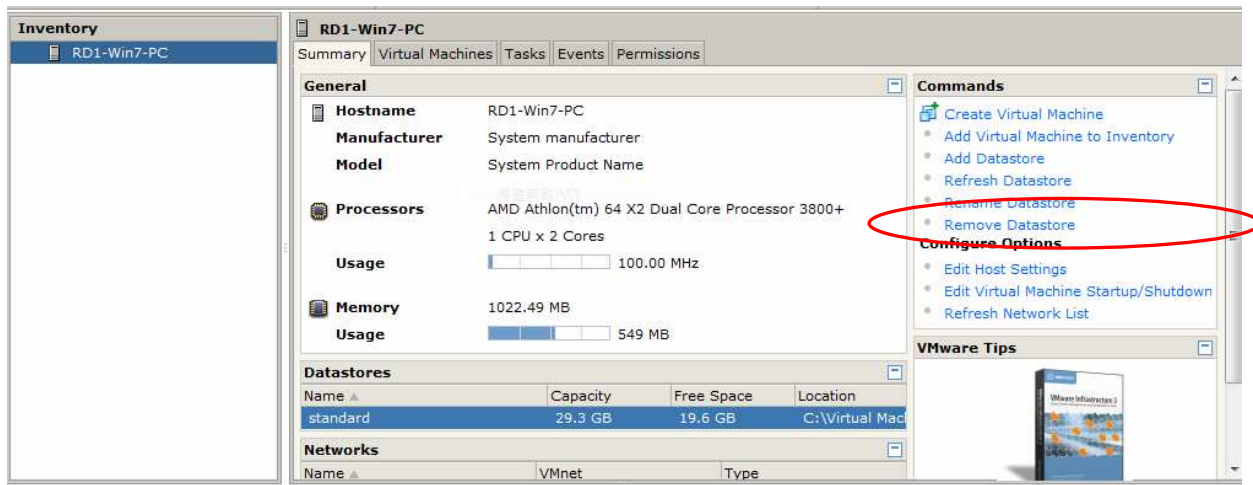
Step 3. Input login name and password to logging on. The login name is the same as the user account for login to the system and password is the same too.



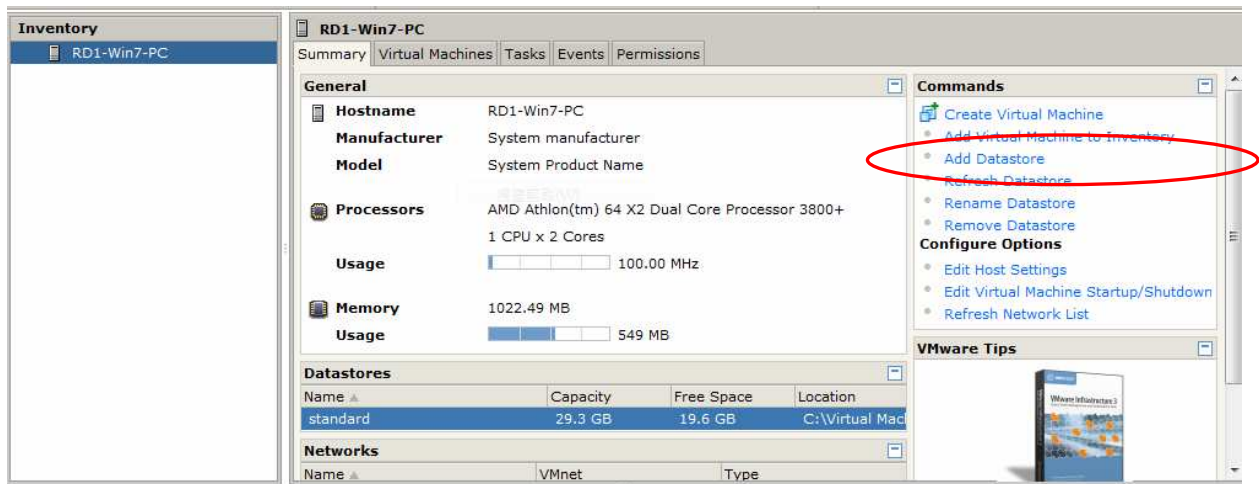
Step 4. Login successfully. The windows is shown as following



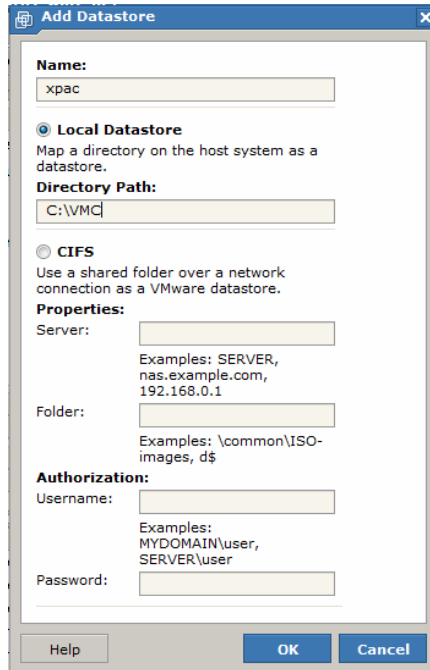
Step 5. Click “Remove Datastore” to remove Datastore first.



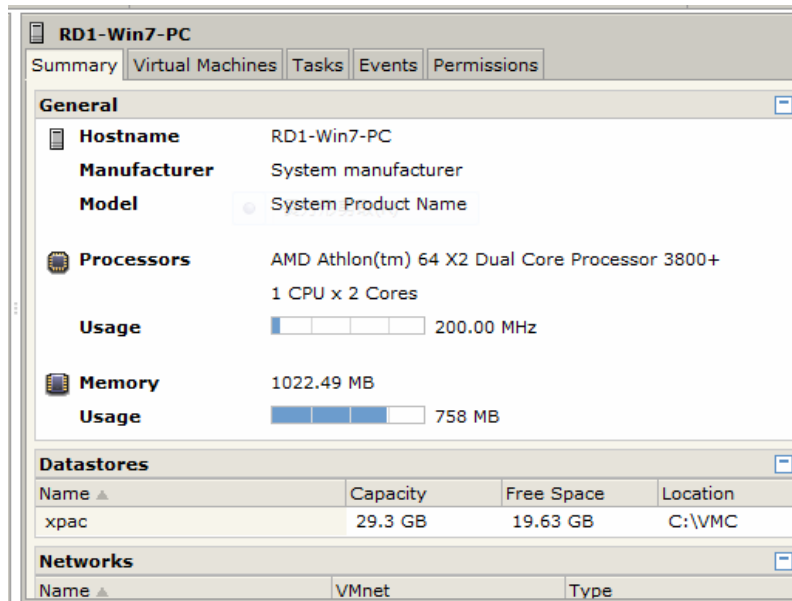
Step 6. Click “Add Datastore”.



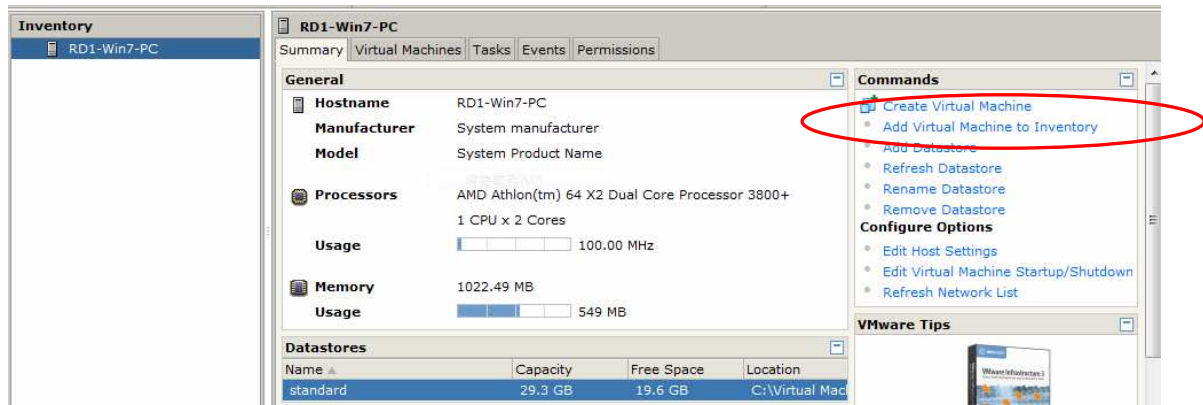
Input name and directory path (Such as xpac 及 C:\VMC)



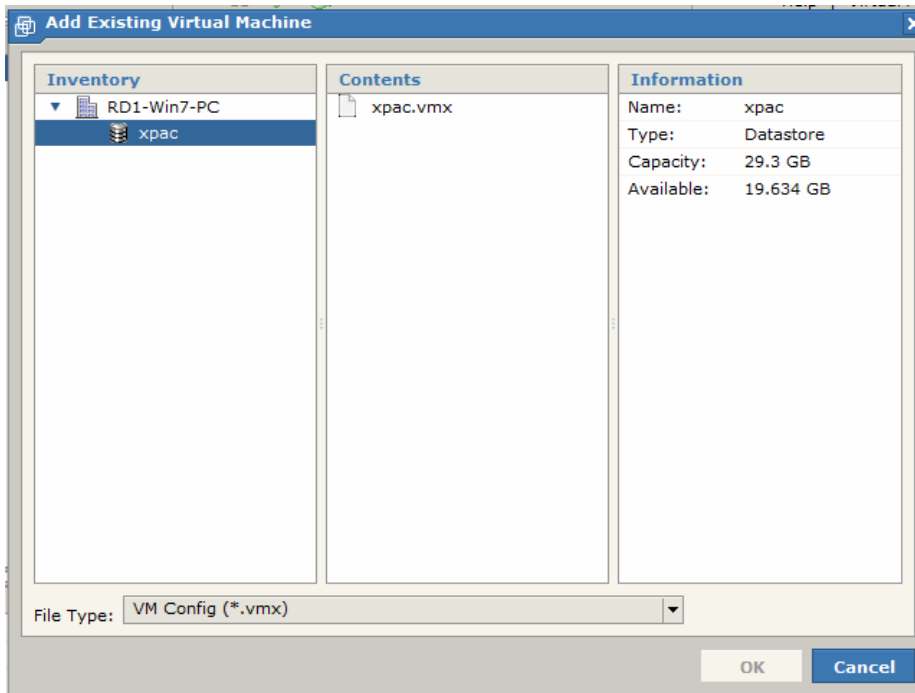
Step 7. Press OK button, and the xpac will show on the Datastores.



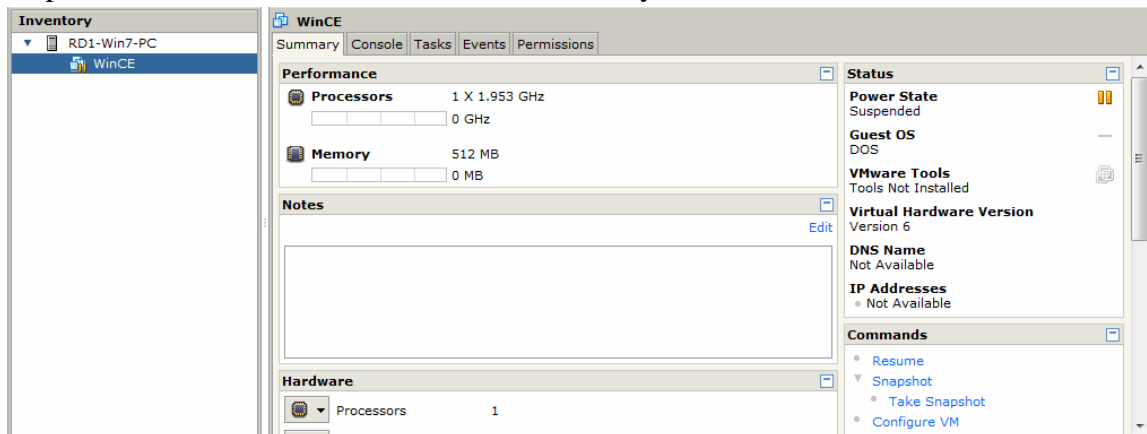
Step 8. Click Add Virtual Machine to Inventory



Step 9. Choose xpac.vmx



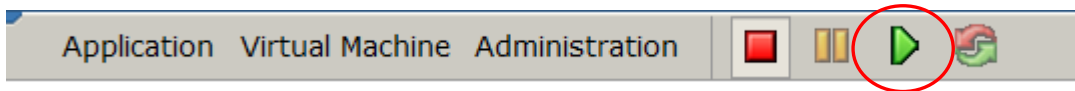
Step 10. Press OK, WinCE will show on Inventory below



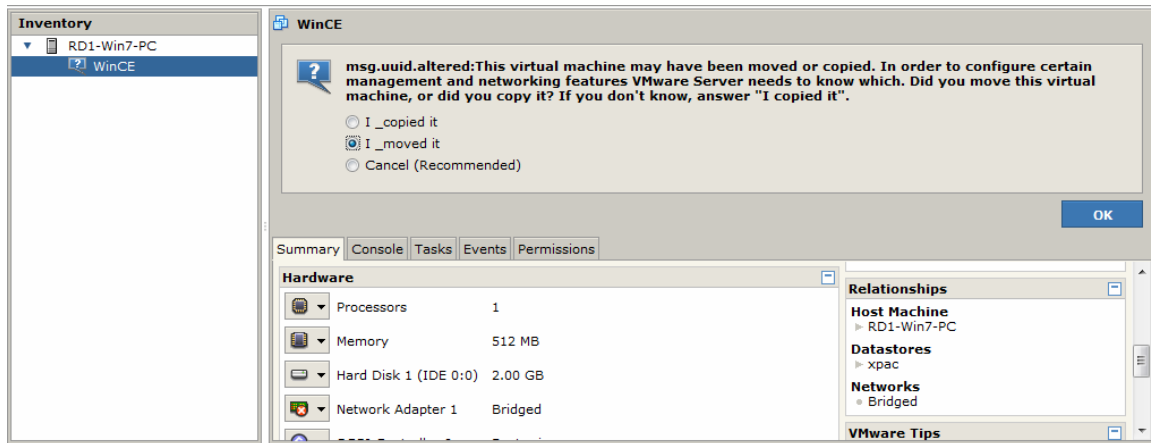
Step 11. Click Summary tab and the settings of WinCE will be shown as following.



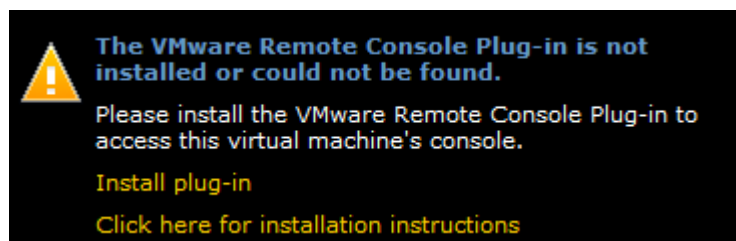
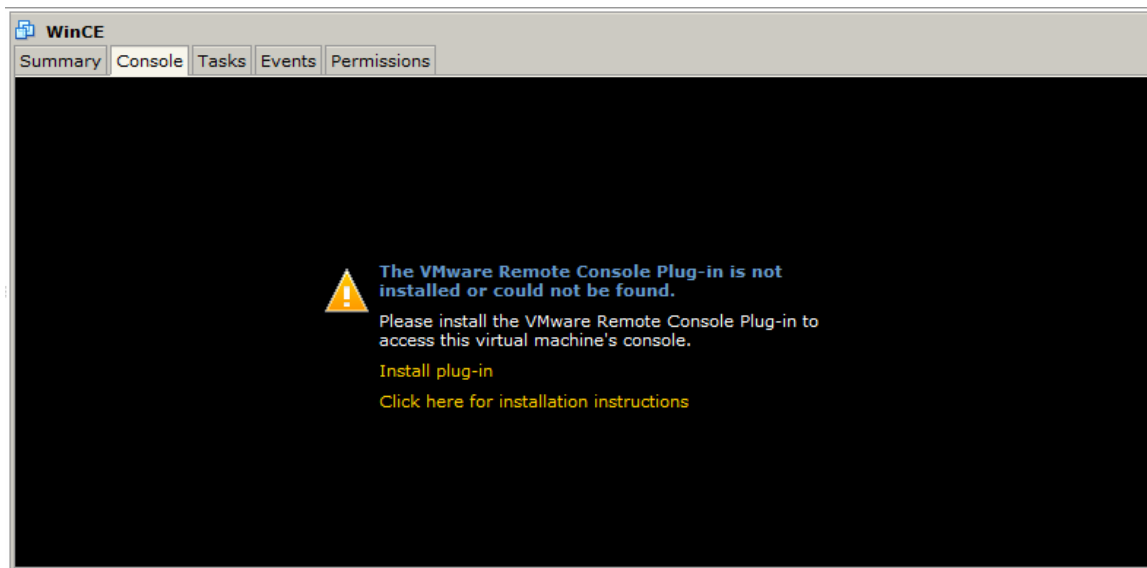
Step 12. Press the play button on toolbar to start the vmware



Note: If the error message is shown as following, Click “I_Moved it” radio button and press OK to continue.



Step 13: Click Console tab. Click “Install plug-in Click here for installation instructions”.



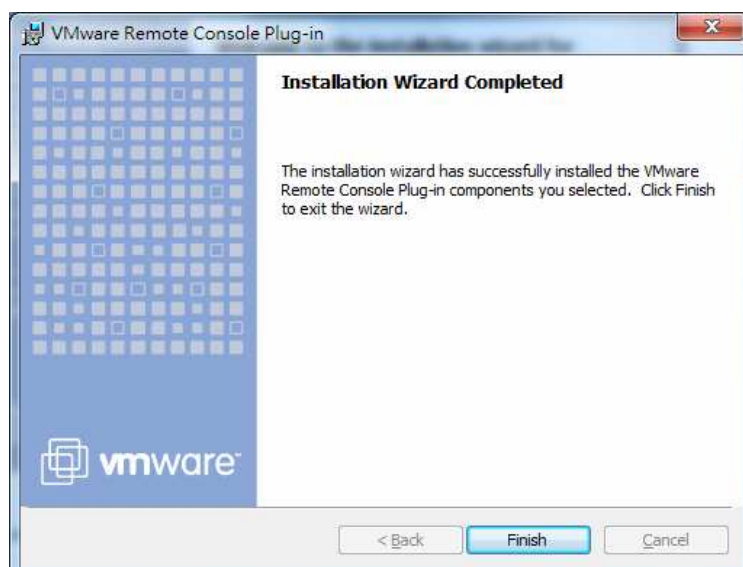
Step 14: The file download windows will be shown as following, and click “Run” to continue.



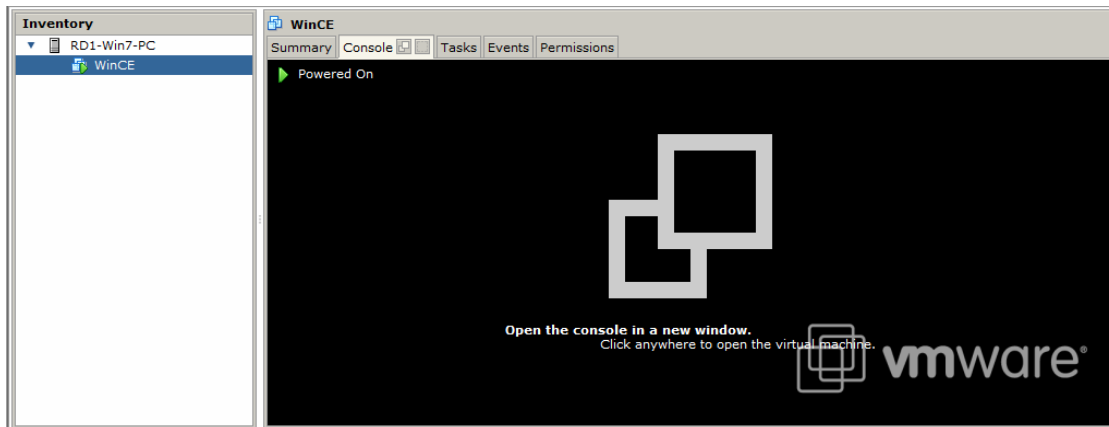
Step 15: Click Install button to install VMware Remote Console Plug-in.



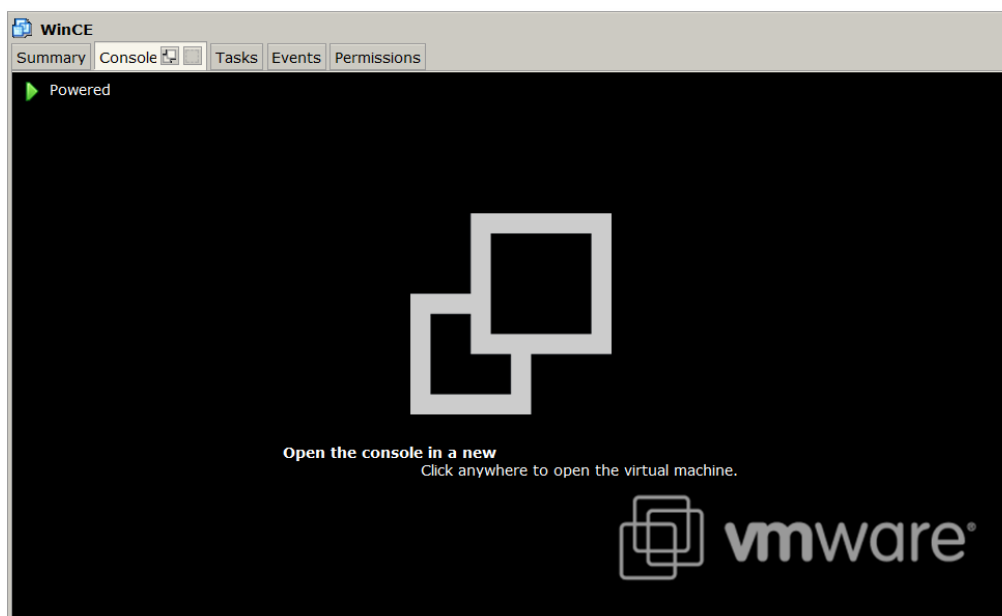
Step 16: Click Finish.



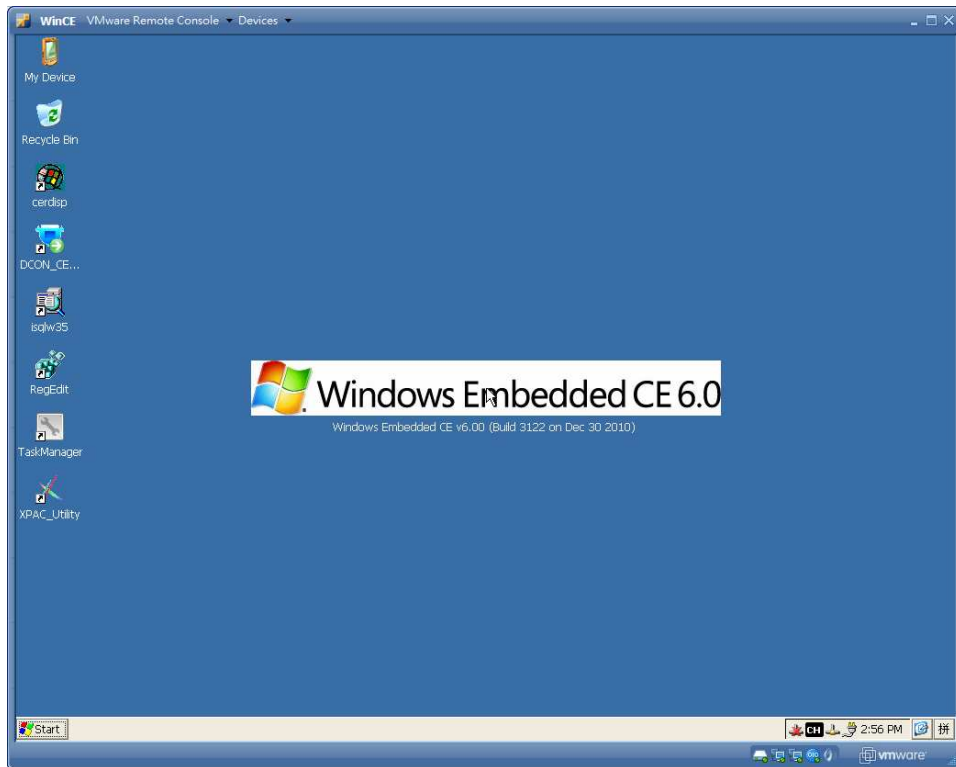
Step 16: Click Console tab again, and press Play button. The windows is shown as following.



Step 17: Click "Open the console in a new" text by mouse.



Step 18: Another "Remote console" windows will be opened and WinCE VM is to be started (Refer to the following figure)



Note: Click the Troubleshoot → Reset on the top of “VMware Remote console” ,and XPAC VM will be reset.

