

Classification	System and Application FAQ on XPAC				No.	1-009-03	
Author	WeiKai	Version	1.0.0	Date	2011/3/30	Page	1/3

How to change the display type for XPAC when the display settings on the current monitor out of range

Applies to:

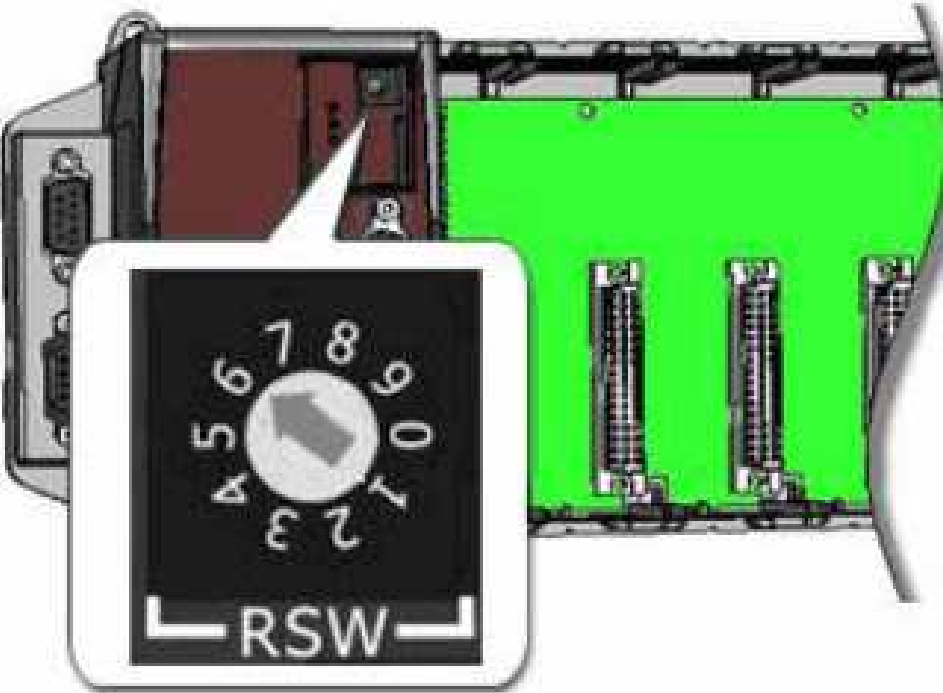
<i>Platform</i>	<i>OS version</i>	<i>XPAC utility version</i>
<i>XPAC series</i>	<i>All versions (WinCE6)</i>	<i>All versions</i>

N/A: Not applicable to this platform and OS.

The default display resolution of XPAC is “1024*768”. If the settings on your monitor are out of range, you are still able to change the display resolution for the XPAC by performing the following steps:

Step 1: Use the remote desktop tool (cerdisp) to connect to your XPAC on the host PC. (For more details about cerdisp, please refer to the document “X2-16_how_to_use_the_remote_desktop_tool_cerhost_english.pdf”)

1.1. Reboot your XPAC in boot mode “9”. The cerdisp.exe file will auto execute

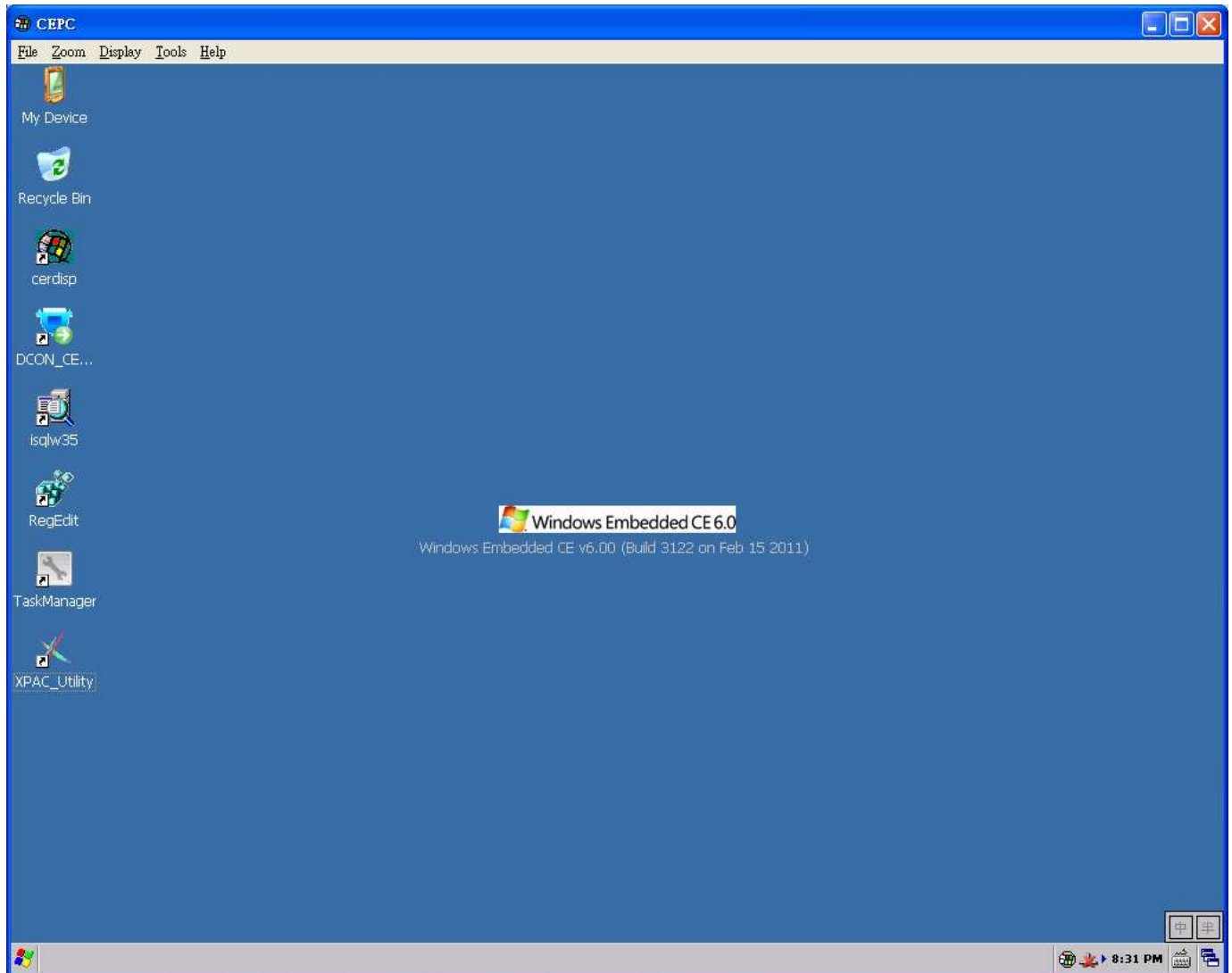


Classification	System and Application FAQ on XPAC				No.	1-009-03	
Author	WeiKai	Version	1.0.0	Date	2011/3/30	Page	2/3

1.2. Download the cerhost.exe to the host PC.

1. CD:\pc_tools\Remote_Display\
2. ftp://ftp.icpdas.com/pub/cd/xp-8000-ce6/pc_tools/remote_display/ (XP-8000-CE6)
ftp://ftp.icpdas.com/pub/cd/xpac-atom-ce6/pc_tools/remote_display/ (XP-8000-Atom-CE6)

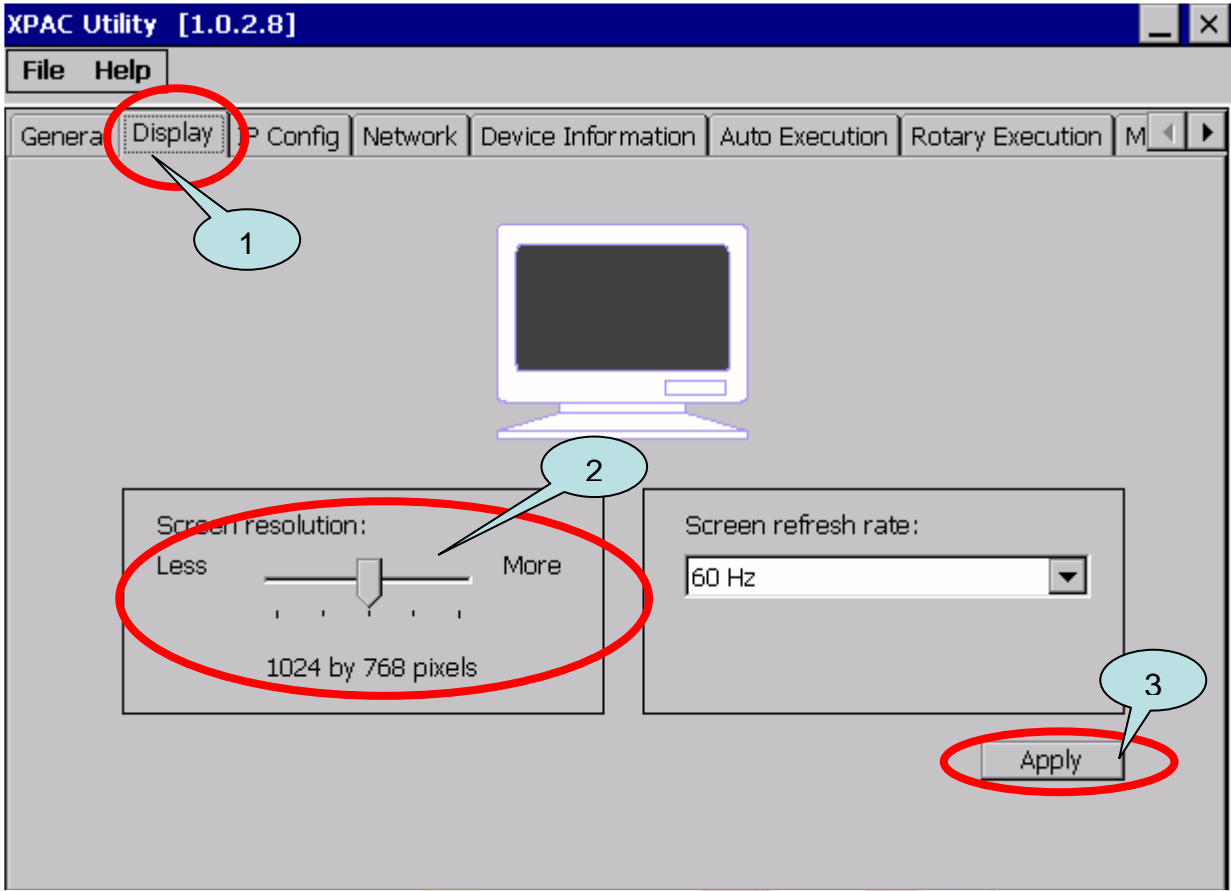
1.3. Execute cerhost.exe on host PC, if the connection is established successfully, you will see your XPAC Desktop will be displayed.



Step 2: Change the display resolution using the XPAC utility.

- 2.1. Start the XPAC Utility on the desktop and select the display resolution for "1024*768".

Classification	System and Application FAQ on XPAC				No.	1-009-03	
Author	WeiKai	Version	1.0.0	Date	2011/3/30	Page	3/3



Step 3: Reboot your XPAC.

Tips & Warnings

 If the monitor is still unable to display correcting, please contact ICPDAS.