

Classification	System and Application FAQ on XPAC				No.	1-007-02	
Author	Weikai	Version	1.0.0	Date	2011/7/23	Page	1/7

How to set up a communication module (for ex. I-8112/I-8114/I-8142/I-8144) uses MSA (B...)

Applies to:

<i>Platform</i>	<i>OS version</i>	<i>XPAC utility version</i>
<i>XPAC series</i>	<i>All versions (WinCE6)</i>	<i>All versions</i>

Serial communication modules are designed for use with intelligent devices such as bar code readers, serial printers, intelligent sensors, instrumentation equipment, computers, and almost any device providing the RS-232 or RS-422/485 serial communication.

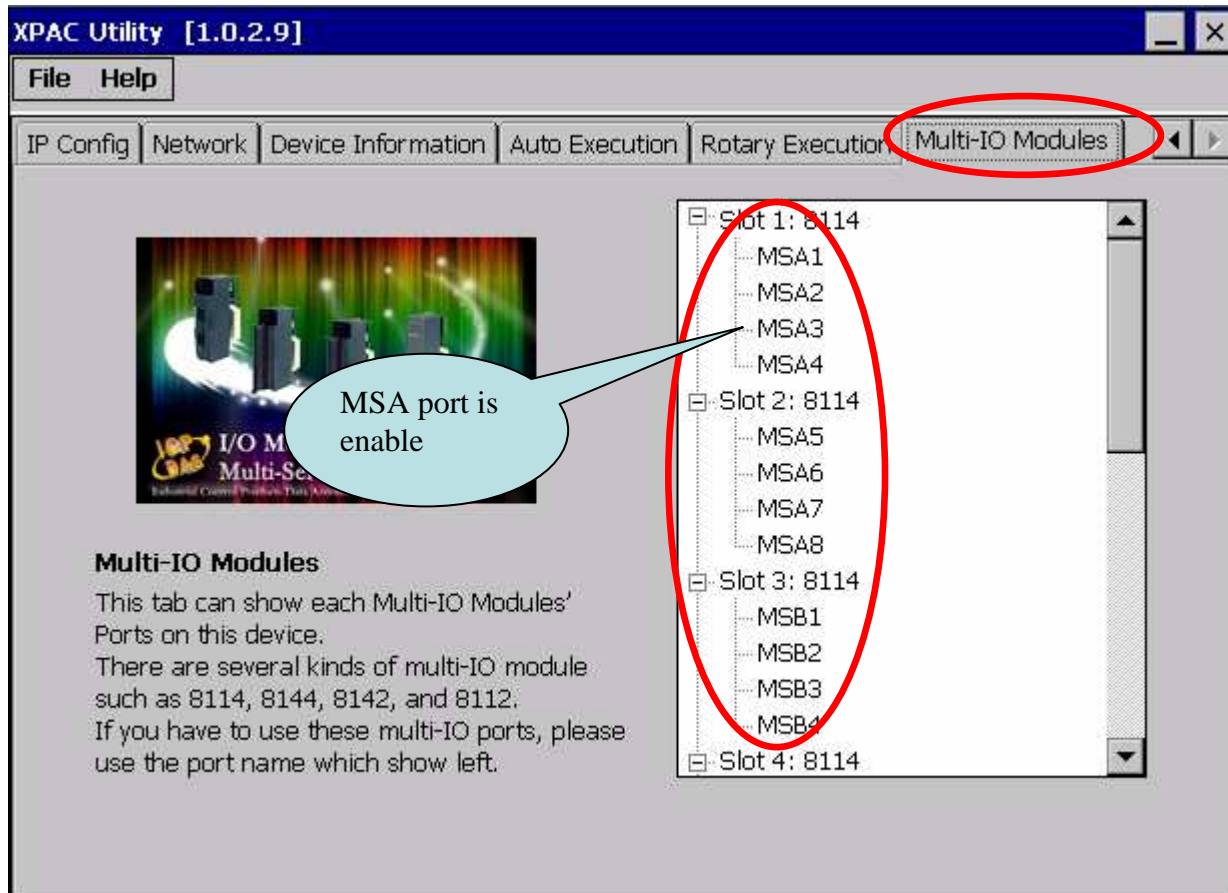
To set up a communication module

Step 1: Insert the multi-serial port module.

- 1.1. Insert the module into any slot
- 1.2. Power off the XPAC

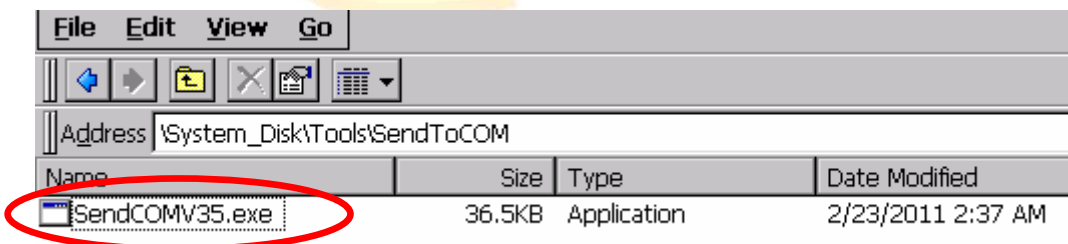
Classification	System and Application FAQ on XPAC				No.	1-007-02	
Author	Weikai	Version	1.0.0	Date	2011/7/23	Page	2/7

1.3. Start the XPAC utility on the desktop, and then click the “Multi-IO Module” index page.



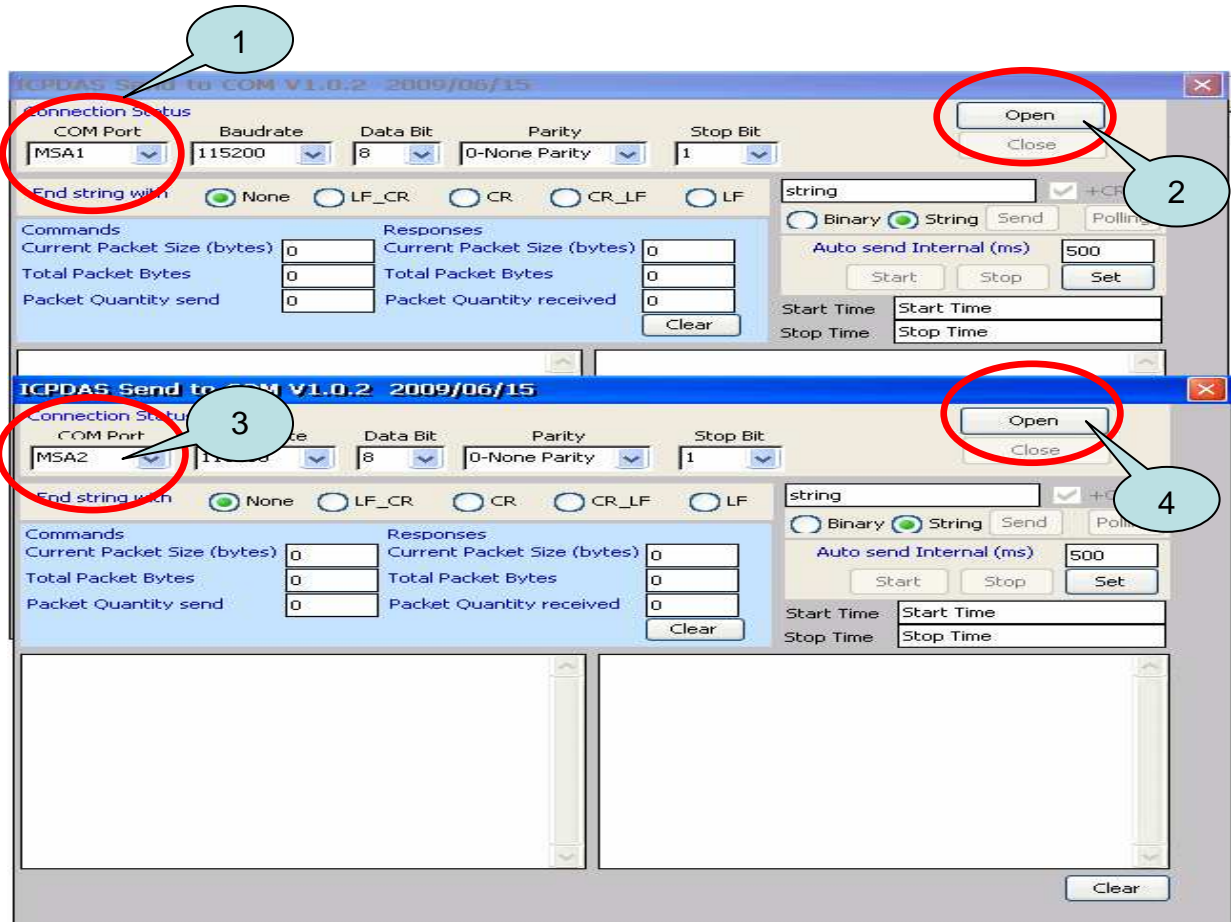
Step 2: Test the multi-serial port module(s).

2.1. Connect the two ports of I-8142 and execute the **SendCOMV35.exe** file located in “\System_Disk\Tools\SendToCOM”.



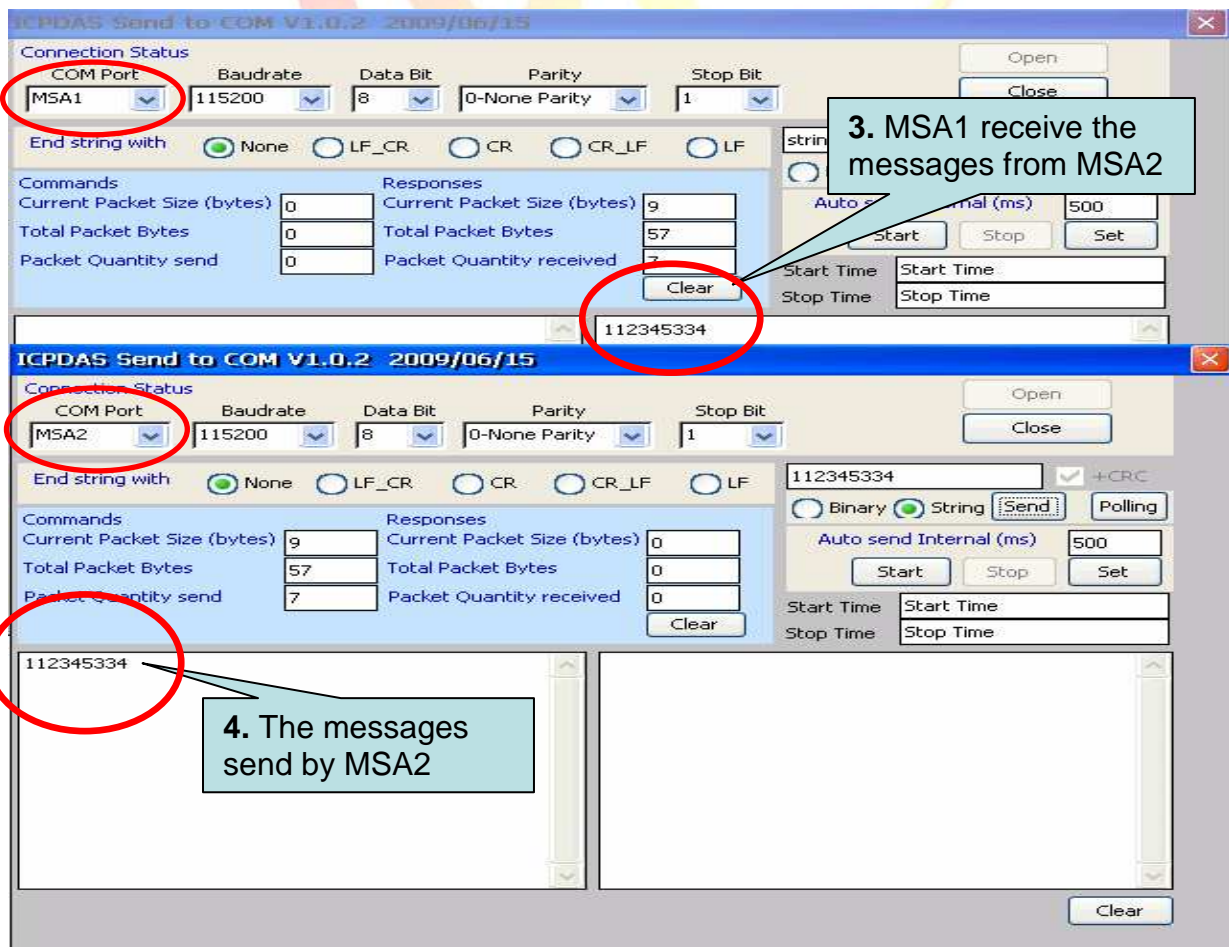
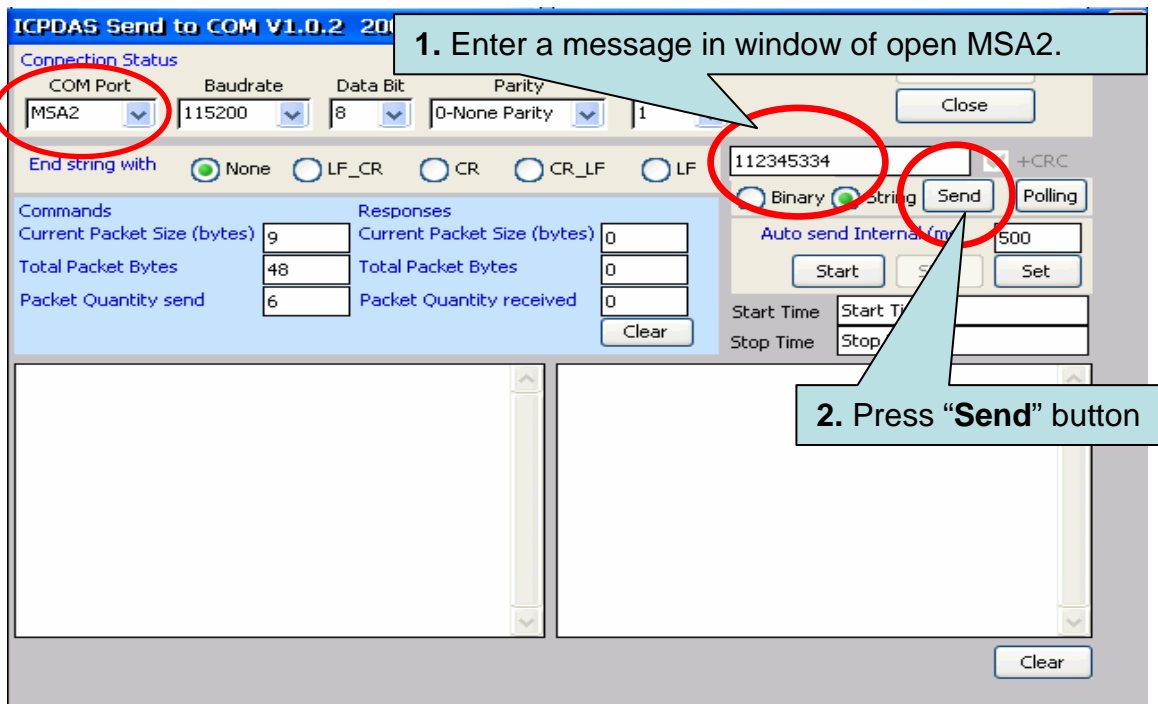
Classification	System and Application FAQ on XPAC				No.	1-007-02	
Author	Weikai	Version	1.0.0	Date	2011/7/23	Page	3/7

2.2. Execute the SendToCOM.exe files again, now two SendToCOM.exe are running; and then open COM Ports “MSA1” and “MSA2” (each corresponding to a real COM port).



Classification	System and Application FAQ on XPAC				No.	1-007-02	
Author	Weikai	Version	1.0.0	Date	2011/7/23	Page	4/7

2.3. Use MSA2 to send a message to MSA1 and check the result.



Classification	System and Application FAQ on XPAC				No.	1-007-02	
Author	Weikai	Version	1.0.0	Date	2011/7/23	Page	5/7

How to get the name of COM Ports

Overview

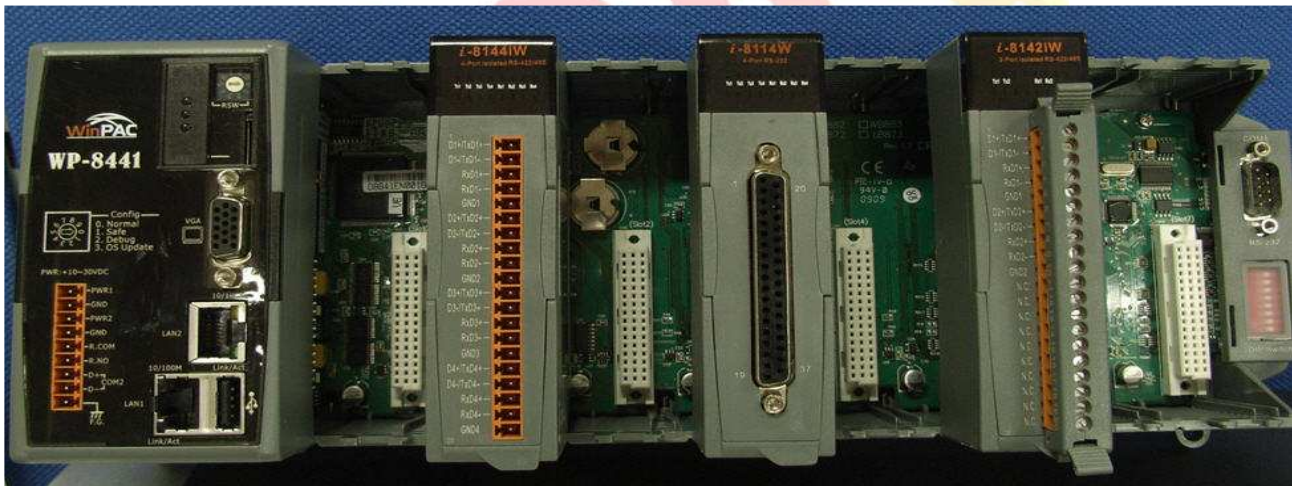
The maximum number of expanded COM port on communication modules supported is up to 28. The 28 COM ports will be named in order of **MSA1~MSA8**, **MSB1~MSB8**, **MSC1~8** and **MSD1~8** since insert multi-serial port module.

To use the COM ports, you need assign the com port name as belows:

VB.net: Dim port As SerialPort = New SerialPort("MSA1")

C#: System.IO.Ports.SerialPort port = new System.IO.Ports.SerialPort("MSA1");

VC: HANDLE hport=CreateFile(_T("MSA1:"),.....);



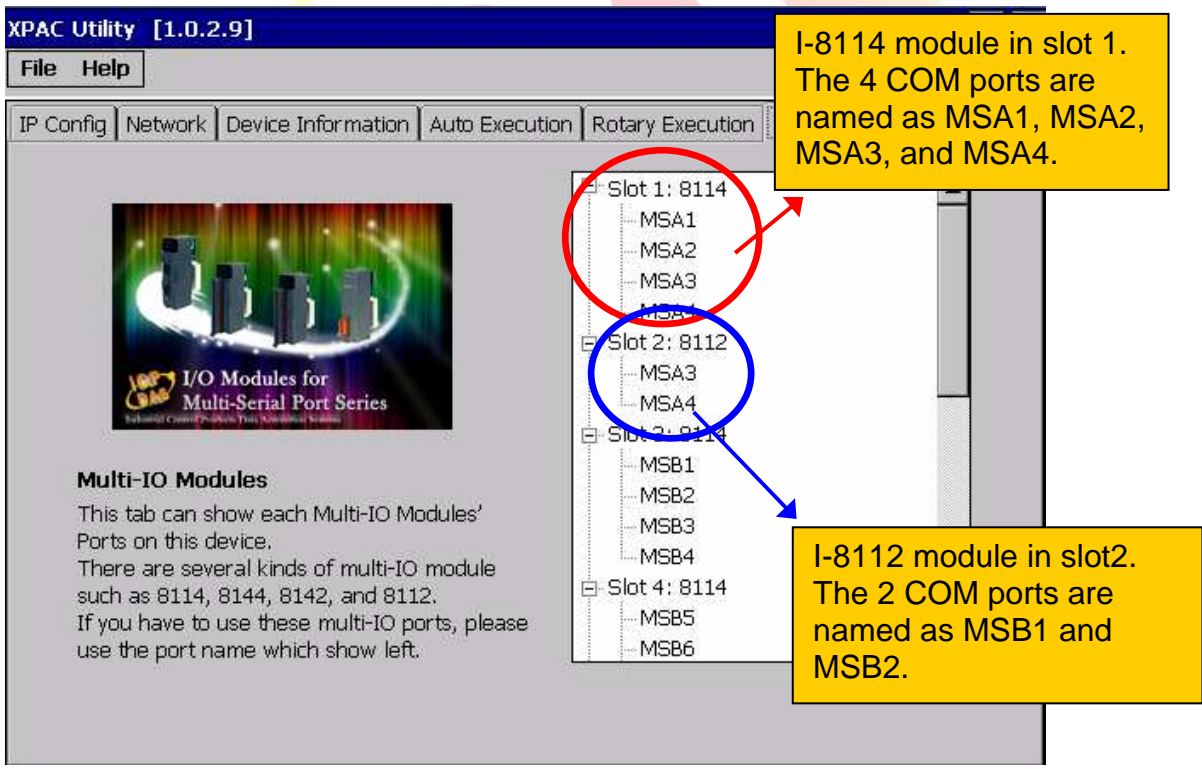
The following are the steps of getting the name of each COM Port:

Classification	System and Application FAQ on XPAC				No.	1-007-02	
Author	Weikai	Version	1.0.0	Date	2011/7/23	Page	6/7

Step 1: Start the XPAC Utility on the desktop, and then click the “Multi-serial port” tag.



Step 2: The COM ports are grouped in the slot that the module plugged.




Classification	System and Application FAQ on XPAC				No.	1-007-02	
Author	Weikai	Version	1.0.0	Date	2011/7/23	Page	7/7

XPAC Utility [1.0.2.9]

File Help

IP Config | Network | Device Information | Auto Execution | Rotary Execution | Multi-IO Modules



Multi-IO Modules
 This tab can show each Multi-IO Modules' Ports on this device.
 There are several kinds of multi-IO module such as 8114, 8144, 8142, and 8112.
 If you have to use these multi-IO ports, please use the port name which show left.

- [-] Slot 1: 8114
 - [-] MSA1
 - [-] MSA2
 - [-] MSA3
 - [-] MSA4
- [-] Slot 2: 8112
 - [-] MSA3
 - [-] MSA4
- [-] Slot 3: 8114
 - [-] MSB1
 - [-] MSB2
 - [-] MSB3
 - [-] MSB4
- [-] Slot 4: 8114
 - [-] MSB5
 - [-] MSB6

I-8114 module in slot 3.
 The 4 COM ports are named as MSA7,MSA8,MSB1, MSB2

