

Classification	System and Application FAQ on XPAC				No.	1-004-04	
Author	WeiKei	Version	1.0.1	Date	2011/06/29	Page	1/8

How to set up an Egalax serial touch panel

Applied to:

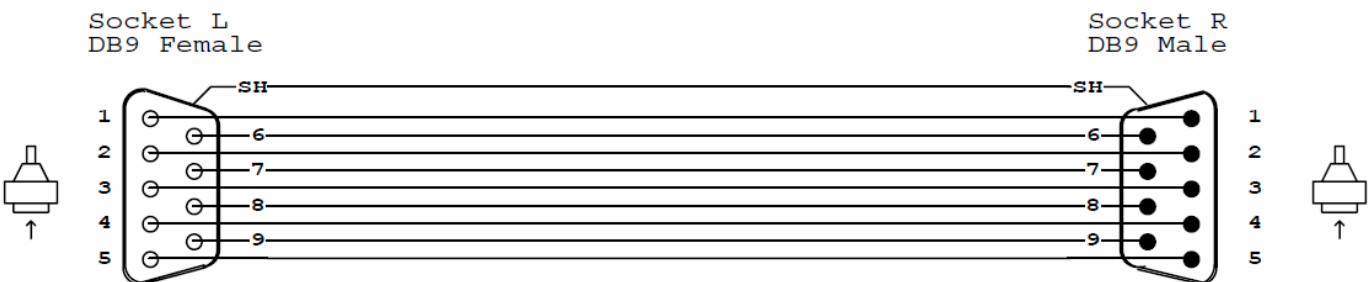
Platform	OS version	XPAC utility version
XPAC series	All versions (WinCE6)	All versions

N/A: Not applicable to this platform and OS.

Tips & Warnings

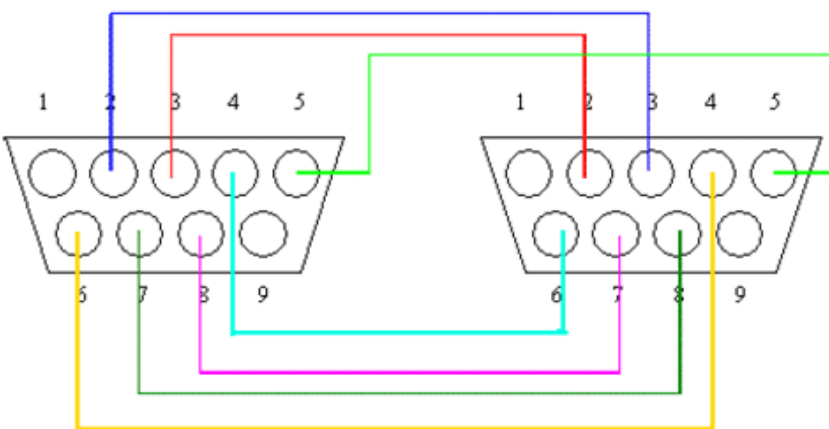
- ⚠ Serial COM Ports 2 and 5 on XP-8000 are standard female/male RS-232 COM Ports. If COM4 is used to connect to the touch panel, you will need a "NULL MODEM".

Standard Wiring



NULL MODEM

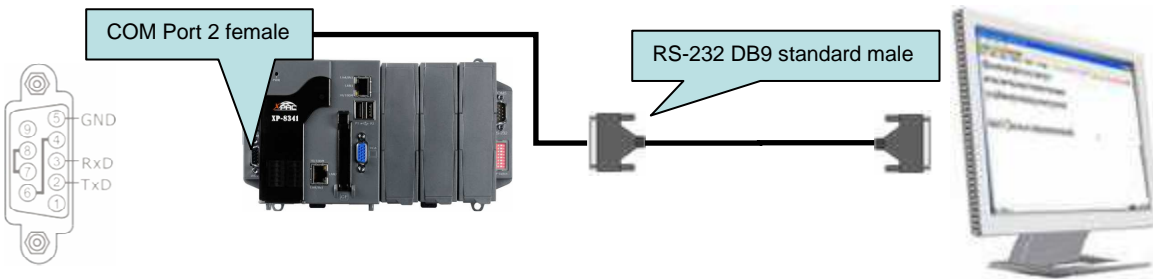
Null Modem DB9 cable : Dreambox Serial cable



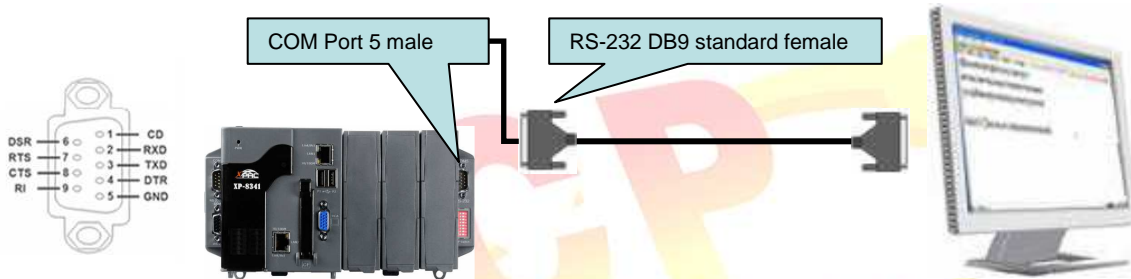
The DB9 side showed here is the one you solder the wires

Classification	System and Application FAQ on XPAC				No.	1-004-04	
Author	WeiKei	Version	1.0.1	Date	2011/06/29	Page	2/8

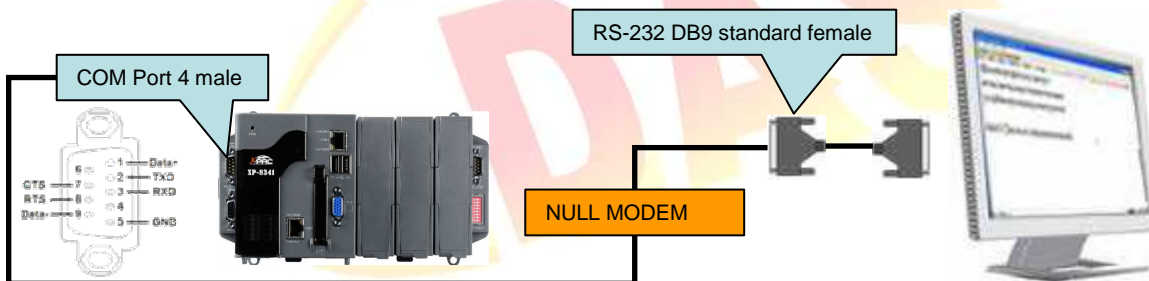
Connecting to COM 2



Connecting to COM 5



Connecting to COM 4



To use an eGalax serial touch panel, please perform the following steps:

Step 1: Location of the devices for the touch panel

The Egalax_Serial_TOUCH_V3.1.3.1727_yyyyymmdd_XPAC_CE6.CAB file is located at (yyyymmdd means Year /Month/ Day)

1. CD:\System_Disk\External_device_driver\
2. ftp://ftp.icpdas.com/pub/cd/xp-8000-ce6/system_disk/external_device_driver/ (XP-8000-CE6)
ftp://ftp.icpdas.com/pub/cd/xpac-atom-ce6/system_disk/external_device_driver/ (XP-8000-Atom-CE6)

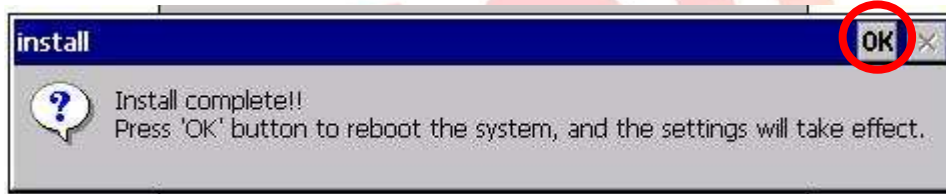
Classification	System and Application FAQ on XPAC				No.	1-004-04	
Author	WeiKei	Version	1.0.1	Date	2011/06/29	Page	3/8

Step 2: Install the Egalax_Serial_TOUCH_V3.1.3.1727_yyyymmdd_XPAC_CE6.CAB file.

2.1. Double click the Egalax_Serial_TOUCH_V3.1.3.1727_yyyymmdd_XPAC_CE6.CAB file, and then click "OK".



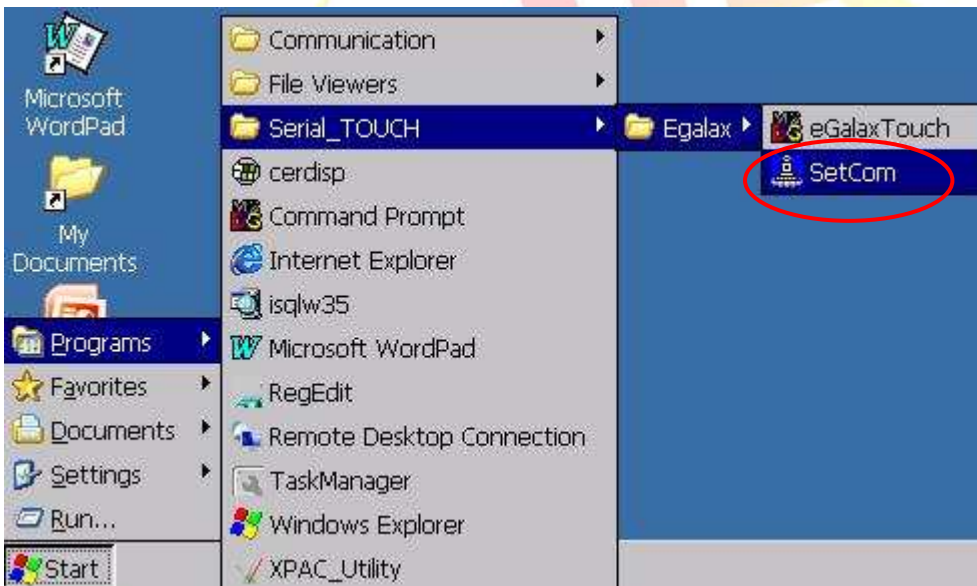
2.2 Double-click ok, and will reboot your XPAC



Step 3: Set your COM port.

3.1 After rebooting, select a COM Port be used to connect to the touch panel.

3.2 Click Start->Programs->Serial_TOUCH->Egalax->SetCom.exe



Classification	System and Application FAQ on XPAC				No.	1-004-04	
Author	WeiKei	Version	1.0.1	Date	2011/06/29	Page	4/8

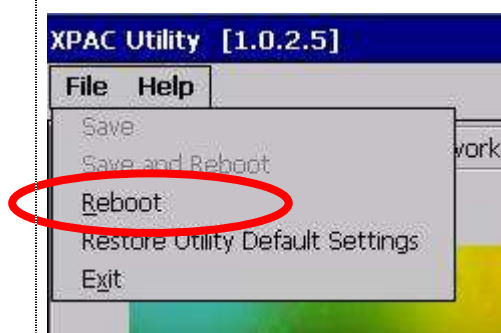
3.3 Perform the SetCOM process.



3.4 Select you use the COM port. (Default COM port is 5)

Step 4: Reboot your XPAC.

4.1. Start the XPAC utility on the desktop. **Click** the "File->Reboot" menu option.



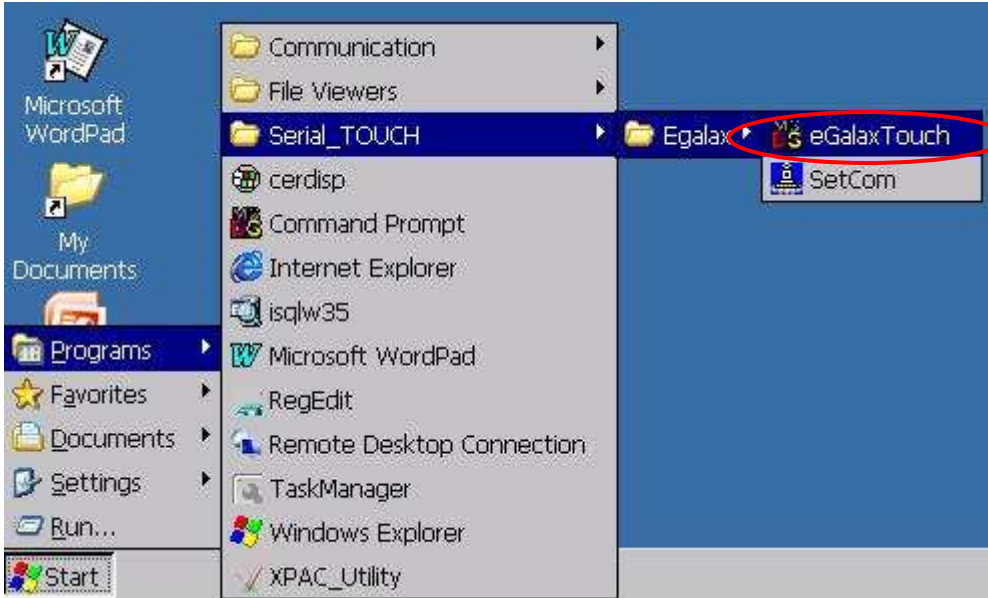
4.2. **Click** the "Yes" button and wait for the device to reboot.



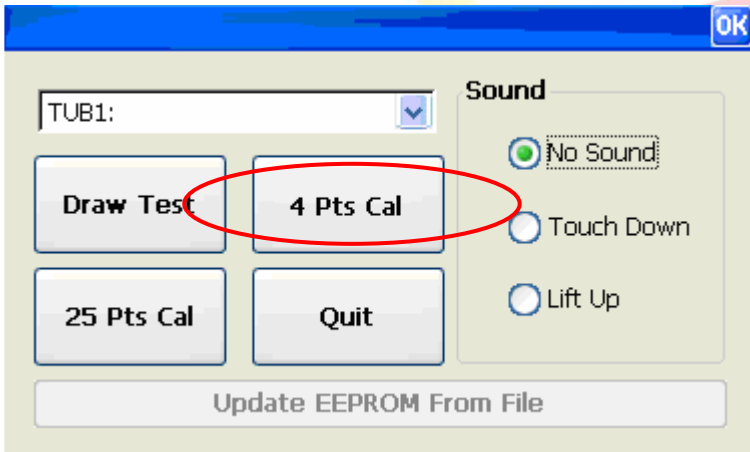
Classification	System and Application FAQ on XPAC				No.	1-004-04	
Author	WeiKei	Version	1.0.1	Date	2011/06/29	Page	5/8

Step 5: Execute the calibration program.

5.1 Click Start->Programs->Serial_TOUCH->Egalax->eGalaxTouch.exe



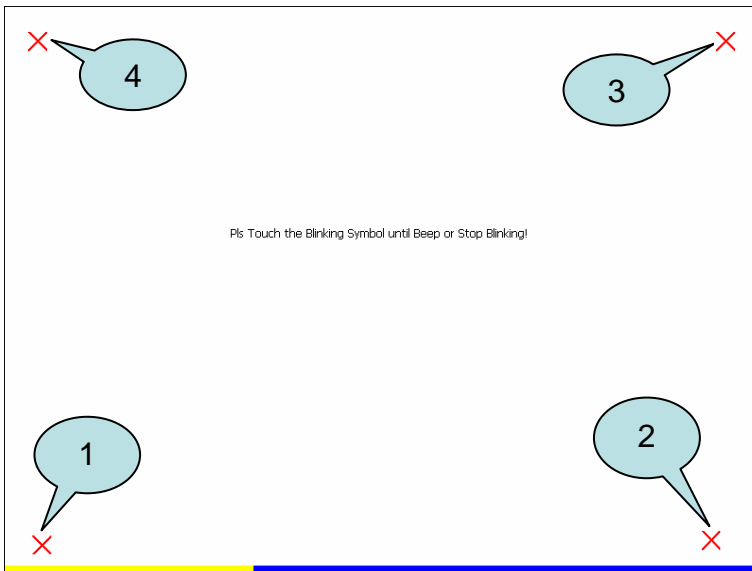
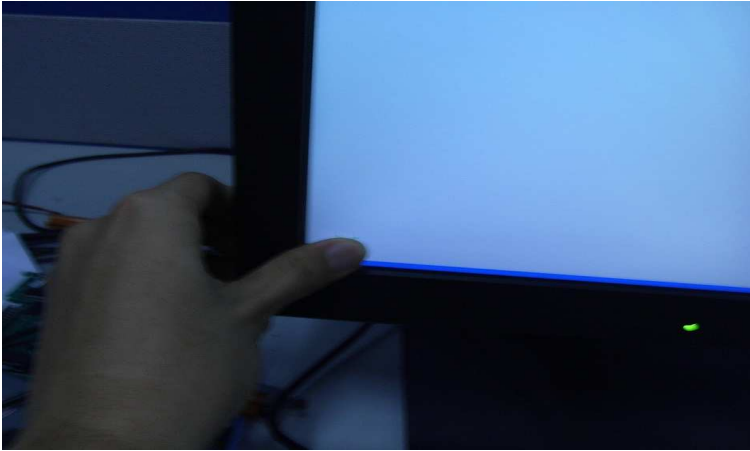
5.2 Click the “4 Pts Cal” button. (Click the “25 Pts Cal” button to obtain a more accurate calibration for the touch panel)



Classification	System and Application FAQ on XPAC				No.	1-004-04	
Author	WeiKei	Version	1.0.1	Date	2011/06/29	Page	6/8

5.3. Perform the calibration process.

5.4. Touch the "X" icons on the monitor to perform the calibration process.



Classification	System and Application FAQ on XPAC				No.	1-004-04	
Author	WeiKei	Version	1.0.1	Date	2011/06/29	Page	7/8

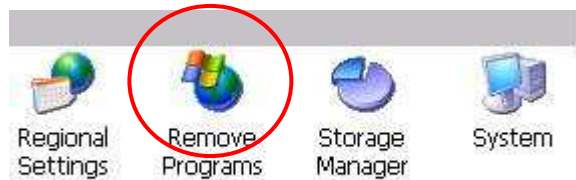
Uninstall eGalax Serial touch driver, and perform the following steps:

Step 1: Execute the Remove Program.

1.1 Click the Start->Settings ->Control Panel.

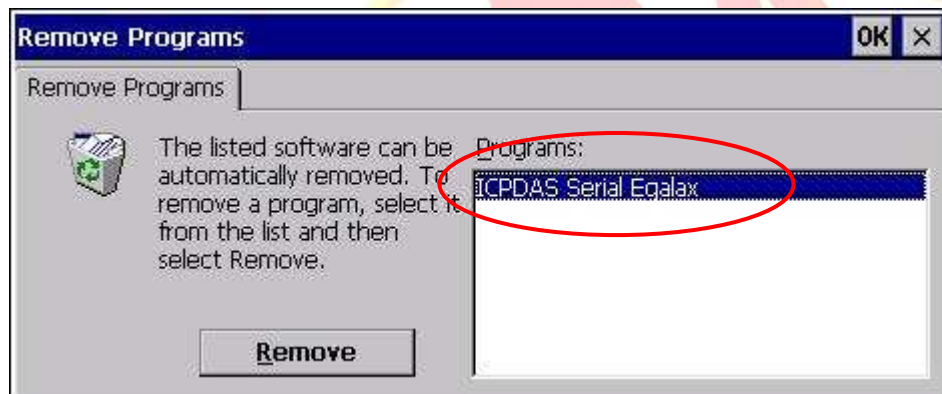


1.2 After Open "Control Panel", double click "Remove Programs".

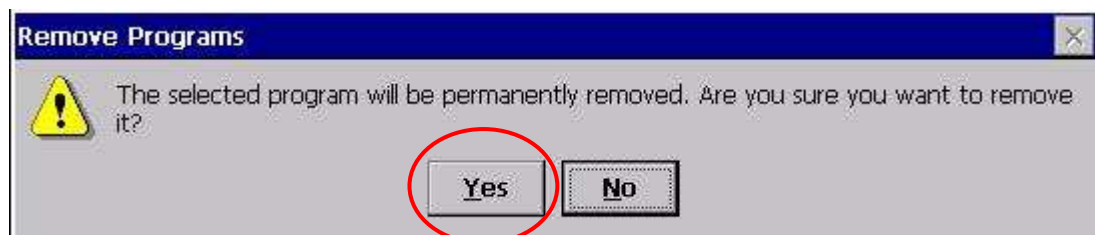


Step 2: Uninstall Penmount Serial touch driver

2.1 After execute "Remove Programs", click "ICPDAS Serial Egalax" and then click "Remove" button

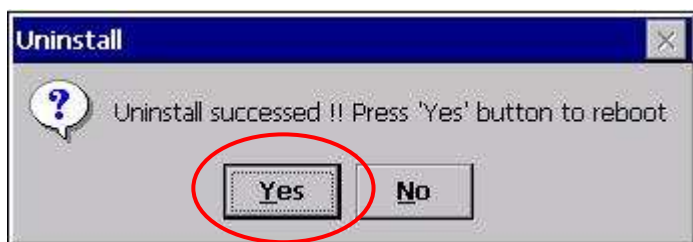


2.2 Click "Yes" button, and will uninstall Egalax Serial USB touch driver.



Classification	System and Application FAQ on XPAC				No.	1-004-04	
Author	WeiKei	Version	1.0.1	Date	2011/06/29	Page	8/8

2.3 Click “Yes”, and will reboot your XAC to take effect.



ICP
DAS