

Classification	System and Application FAQ on XPAC				No.	1-004-01	
Author	WeiKai	Version	1.0.1	Date	2011/6/29	Page	1/6

How to set up an Egalax USB touch panel

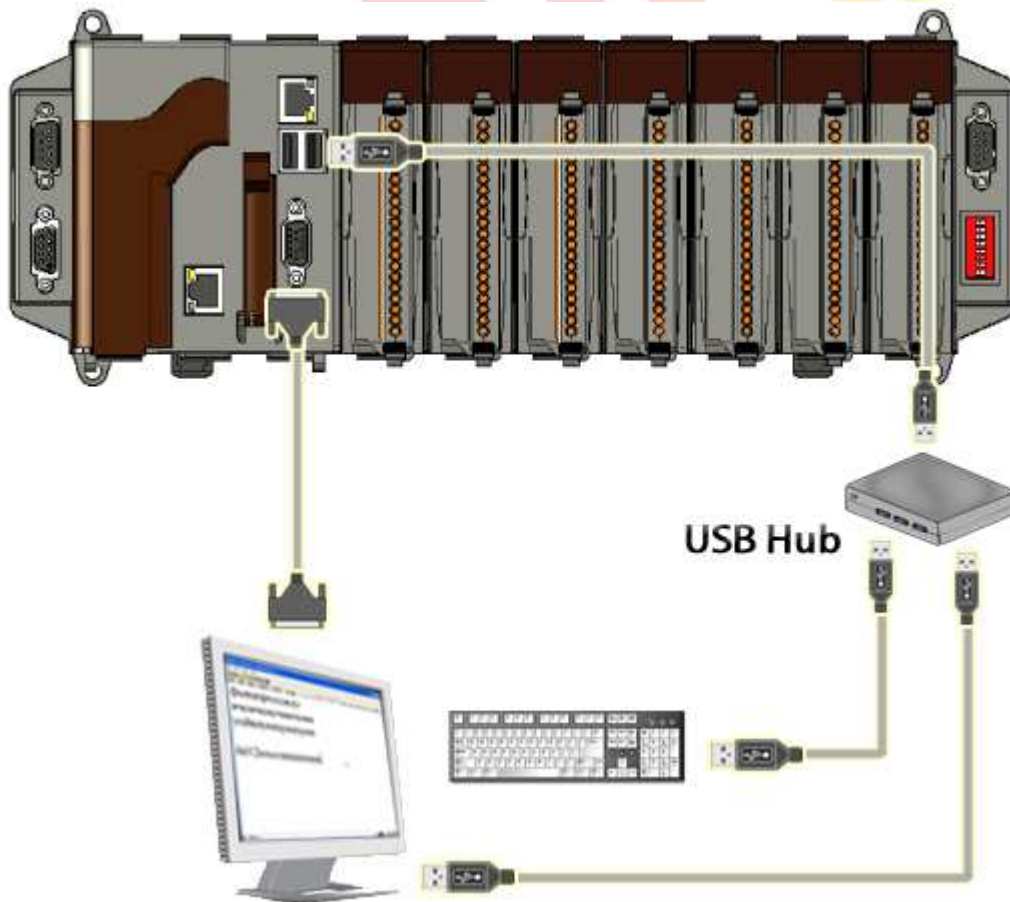
Applies to:

<i>Platform</i>	<i>OS version</i>	<i>XPAC utility version</i>
<i>XPAC series</i>	<i>All versions (WinCE6)</i>	<i>All versions</i>

N/A: Not applicable to this platform and OS.

Use a touch panel and a keyboard at the same time on XP-8x4x.

The XP-8x4x series only has two USB ports, so if you want use a touch panel and keyboard/mouse at the same time. You will need a USB hub.



Classification	System and Application FAQ on XPAC				No.	1-004-01	
Author	WeiKai	Version	1.0.1	Date	2011/6/29	Page	2/6

To use an Egalax USB touch panel, perform the following steps:

Step 1: Location of the devices for the touch panel

The Egalax_USB_TOUCH_V3.1.3.1727_YYYYMMDD_XPAC_CE6.CAB file is located at (YYYYMMDD means Year /Month/ Day)

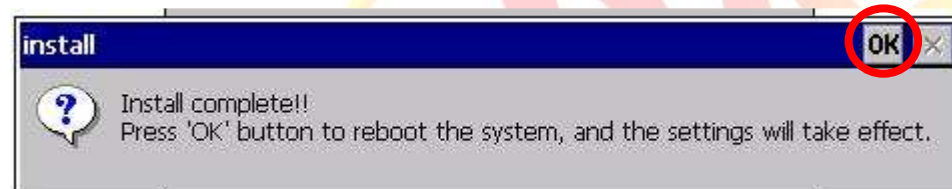
1. CD:\System_Disk\External_device_driver\
2. ftp://ftp.icpdas.com/pub/cd/xp-8000-ce6/system_disk/external_device_driver/ (XP-8000-CE6)
ftp://ftp.icpdas.com/pub/cd/xpac-atom-ce6/system_disk/external_device_driver/ (XP-8000-Atom-CE6)

Step 2: Install the Egalax_USB_TOUCH_V3.1.3.1727_YYYYMMDD_XPAC_CE6.CAB file.

- 2.1. Double click the Egalax_USB_TOUCH_V3.1.3.1727_YYYYMMDD_XPAC_CE6.CAB file, and then click "OK".



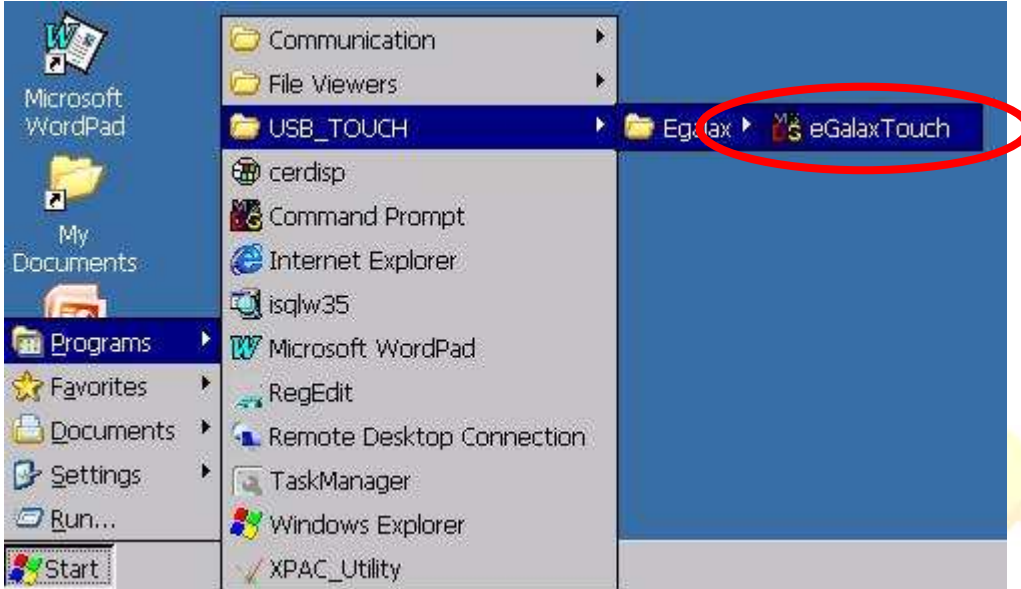
- 2.2 Double click ok, and will reboot your XPAC.



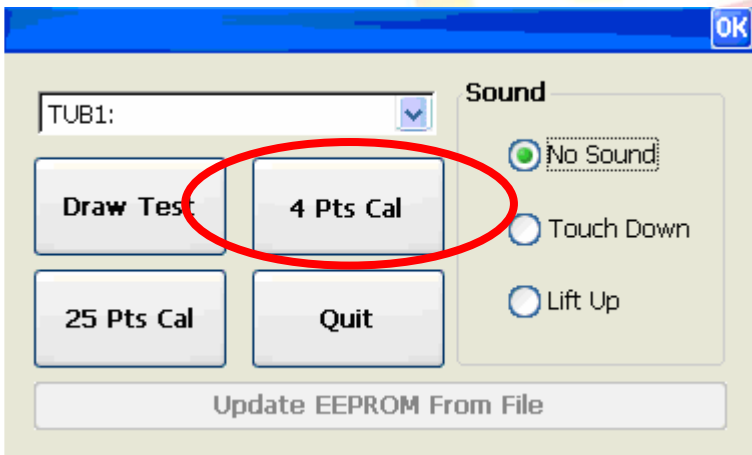
Classification	System and Application FAQ on XPAC				No.	1-004-01	
Author	WeiKai	Version	1.0.1	Date	2011/6/29	Page	3/6

Step 3: Execute the calibration program.

3.1. Click Start->Programs->USB_TOUCH->Egalax->eGalaxTouch.bat.



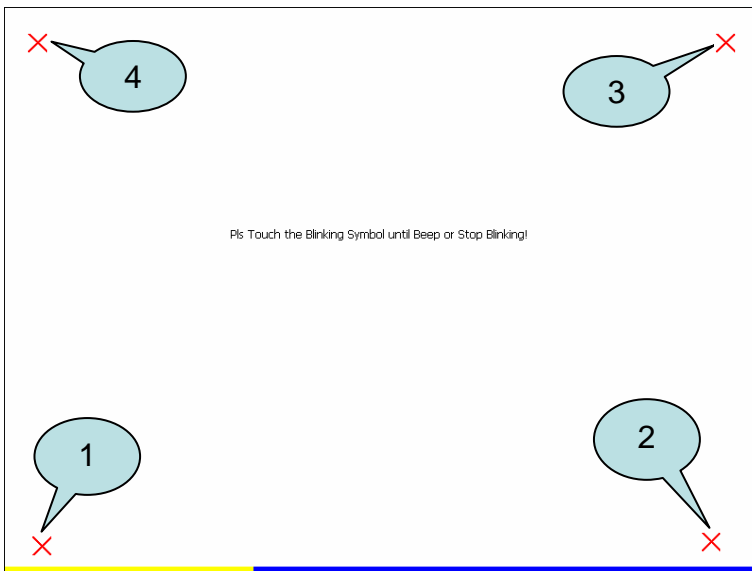
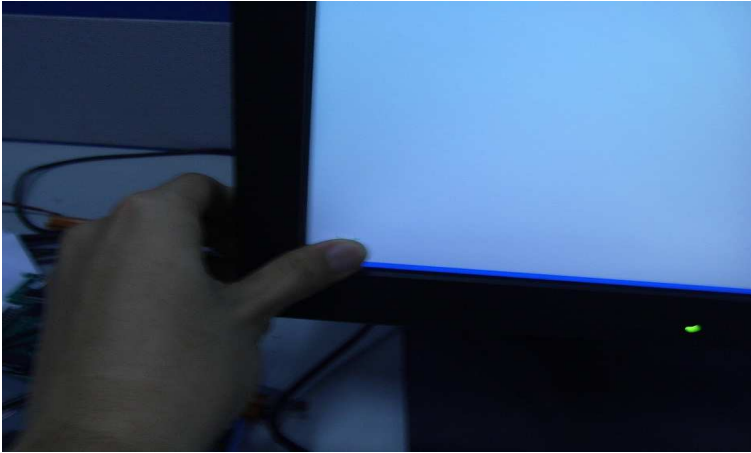
3.2. Click the “4 Pts Cal” button. (Click the “25 Pts Cal” button to obtain a more accurate calibration for the touch panel)



Classification	System and Application FAQ on XPAC				No.	1-004-01	
Author	WeiKai	Version	1.0.1	Date	2011/6/29	Page	4/6

3.3. Perform the calibration process.

3.3.1. Touch the "X" icons on the monitor to perform the calibration process.



Classification	System and Application FAQ on XPAC				No.	1-004-01	
Author	WeiKai	Version	1.0.1	Date	2011/6/29	Page	5/6

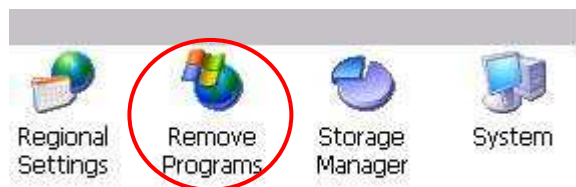
Uninstall Egalax USB touch driver, and perform the following steps:

Step 1: Execute the Remove Program.

1.1 Click the Start->Settings ->Control Panel.

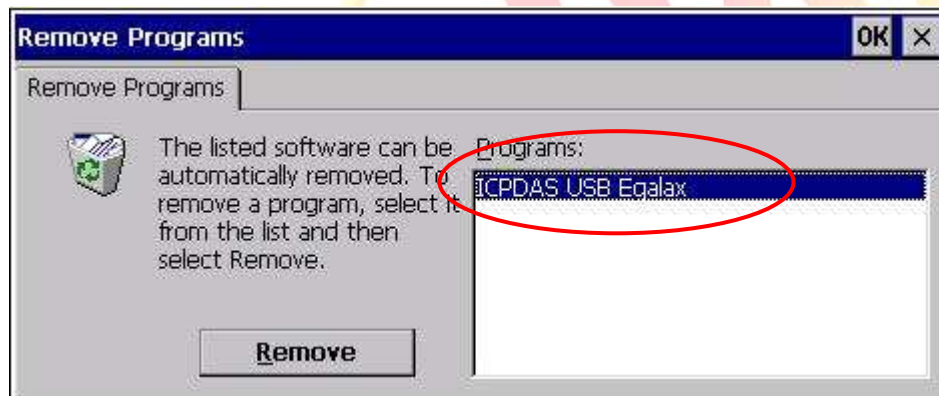


1.2 After Open “Control Panel”, double click “Remove Programs”.

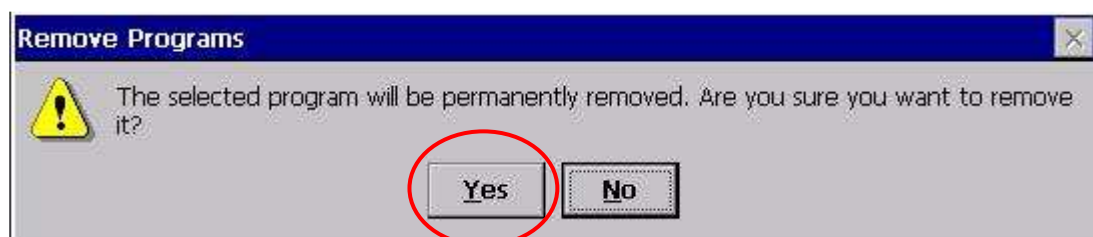


Step 2: Uninstall Penmount USB touch driver.

2.1 After execute “Remove Programs”, click “ICPDAS USB Egalax” and then click “Remove” button



2.2 Click “Yes” button, and will uninstall Egalax USB touch driver.



Classification	System and Application FAQ on XPAC				No.	1-004-01	
Author	WeiKai	Version	1.0.1	Date	2011/6/29	Page	6/6

2.3 Click “Yes”, and will reboot your XAC to take effect.

