

XP-8000-Atom-CE6 Quick Start Guide

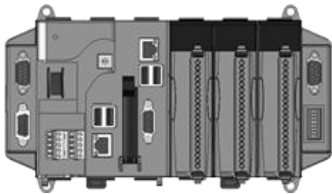
Version 1.0.4, November 2012

Congratulations!

Congratulations on purchasing the XP-8000-Atom-CE6 - the most popular automation solution for remote monitoring and control applications. This Quick Start Guide provides information that enables you to get started using the XP-8000-Atom-CE6. Please also consult the User Manual for more detailed information on regarding the set up and use of the XP-8000-Atom-CE6.

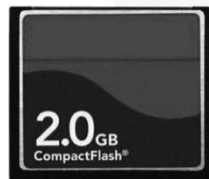
What's in the Box?

In addition to this guide, the package includes the following items:



XP-8000-Atom-CE6 Module

XP-8141-Atom-CE6
XP-8341-Atom-CE6
XP-8741-Atom-CE6



2 GB CF card



Software Utility CD



Screw driver

(1C016)
2.4 mm

Technical Support

● **XP-8000-Atom-CE6 User Manual**

The user manual for the XP-8000-Atom-CE6 can be found on the enclosed CD at:

CD:\XPAC-ATOM-CE6\Document\User_Manual\

or on the ICP DAS web site at:

http://ftp.icpdas.com/pub/cd/XPAC-ATOM-CE6/document/user_manual/

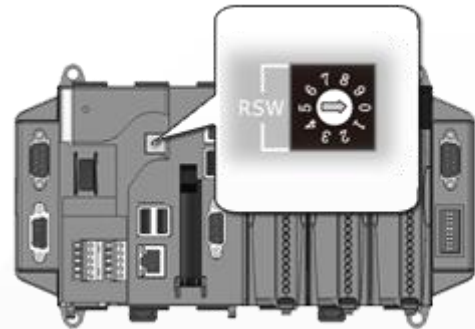
● **XP-8000-Atom-CE6 Website**

Full details and specifications for the XP-8000-Atom-CE6 can be found at:

http://www.icpdas.com.tw/product/solutions/pac/XPAC-ATOM/XPAC-ATOM_introduction.html

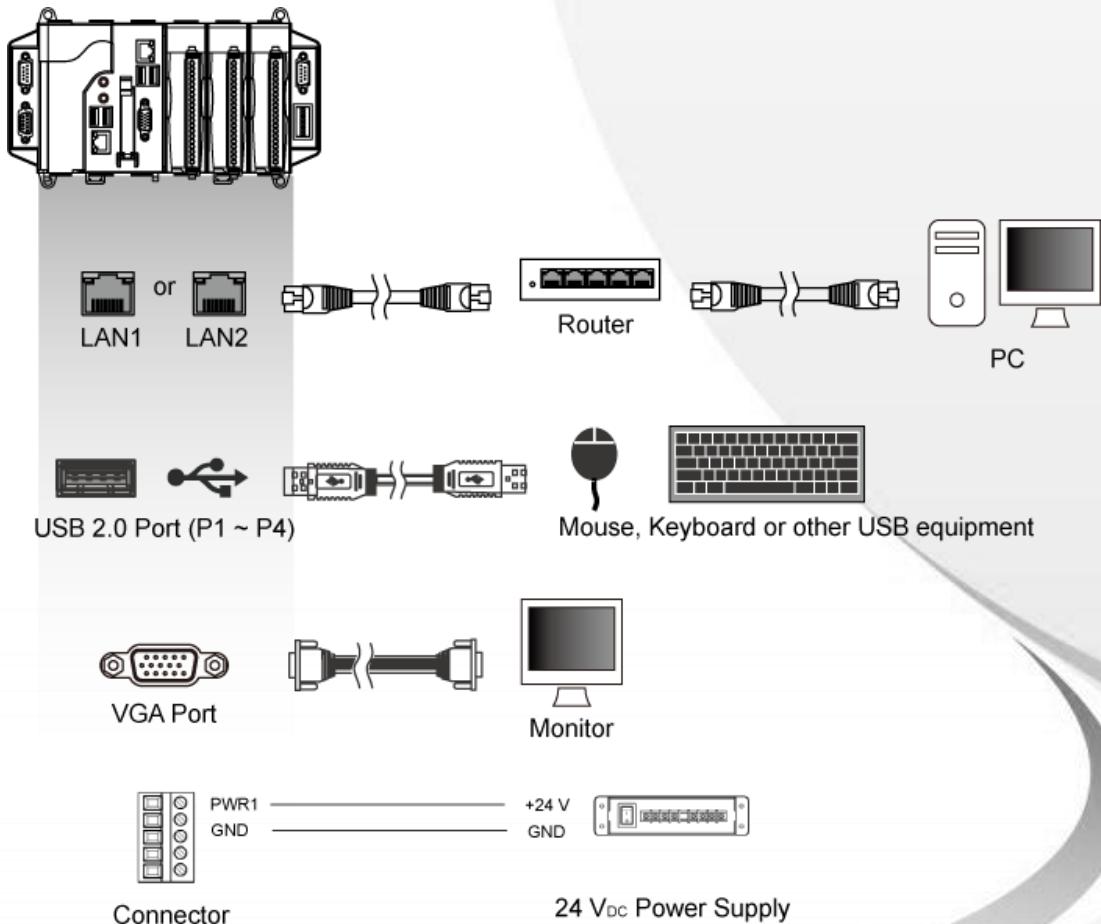
1 Configuring Boot Mode

Before beginning any installation, be sure that the rotary switch is set to the "0" position.



2 Connecting Peripherals

- i. Connect the LAN port to a router/hub.
- ii. Connect the USB mouse and USB keyboard to the USB port.
- iii. Connect the monitor to the VGA port.
- iv. Connect the +24 V_{DC} power supply to the PWR1 and GND terminals.



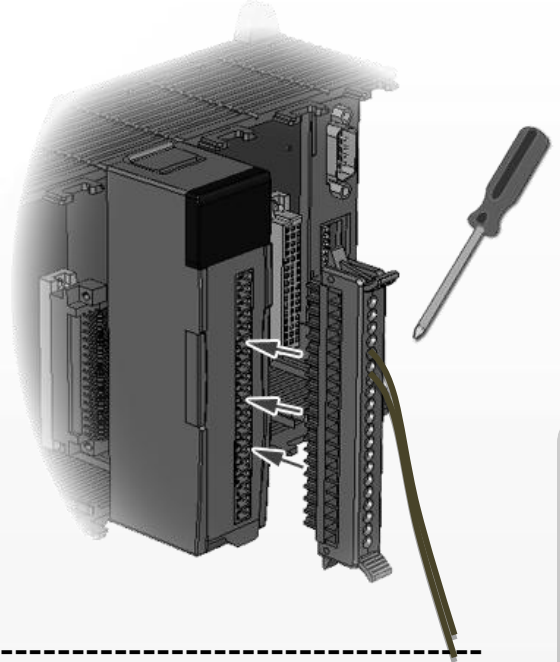
3

Inserting the I/O Modules

Note that the only high profile I-8K and I-87K series modules can be attached to XP-8000-Atom-CE6.

For more information regarding expansion I/O modules, please refer to

http://www.icpdas.com/products/PAC/xpac/IO_Expansion.htm



4

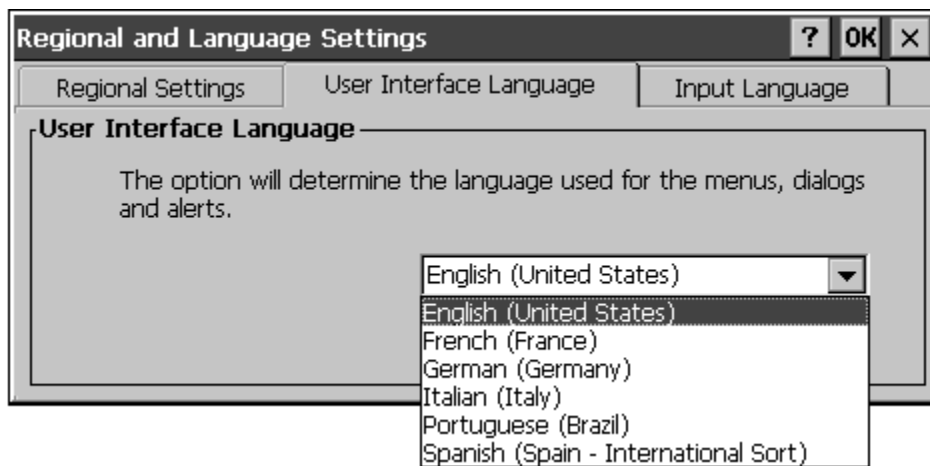
Changing the User Interface Language and Time Zone

The "Regional Settings" option is a Windows CE function that allows users to easily change the language used for the XP-8000-Atom-CE6 user interface to your native language.

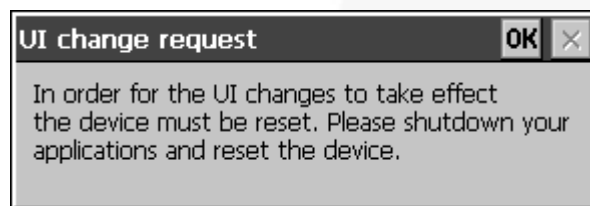
Step 1 Click the "Start" button, then click the "Control Panel" option from the "Settings" menu item, and then click "Regional Settings" icon to open the "Regional and Language Settings" dialog box.



Step 2 Click the “User Interface Language” tab and select the desired language from the drop-down menu, and then click “OK”

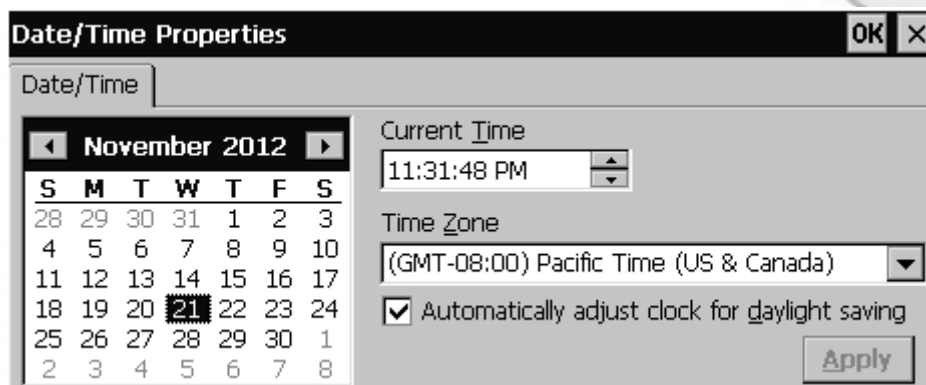


Step 3 Click the “OK” button, and then reboot the XP-8000-Atom-CE6 to allow the changes to take effect.



Step 4 After rebooting. Click the “Start” button, then click the “Control Panel” option from the “Settings” menu item, and then click the “Date/Time” icon to open the “Date/Time properties” dialog box.

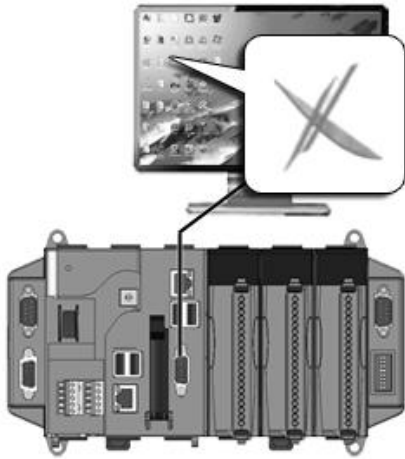
Step 5 Select the appropriate time zone from the “Time Zone” drop-down menu. If necessary, check the “Automatically adjust clock for daylight savings” check box, and then click the “Apply” button to save the changes.



5

Configuring the XP-8000-Atom-CE6

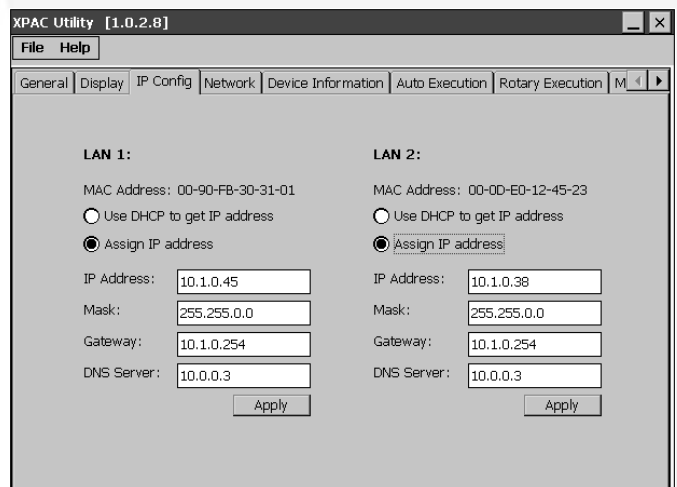
The XPAC Utility is a tool that is designed to allow users to quickly control and configure the XP-8000-Atom-CE6.



Step 1 Double-click the “XPAC Utility” icon located on the desktop



Step 2 Enter the relevant information for the respective parameters in the fields provided for the IP config tab, the FTP server tab and the Auto Execution tab, etc., then click the “Apply” button to save the changes.



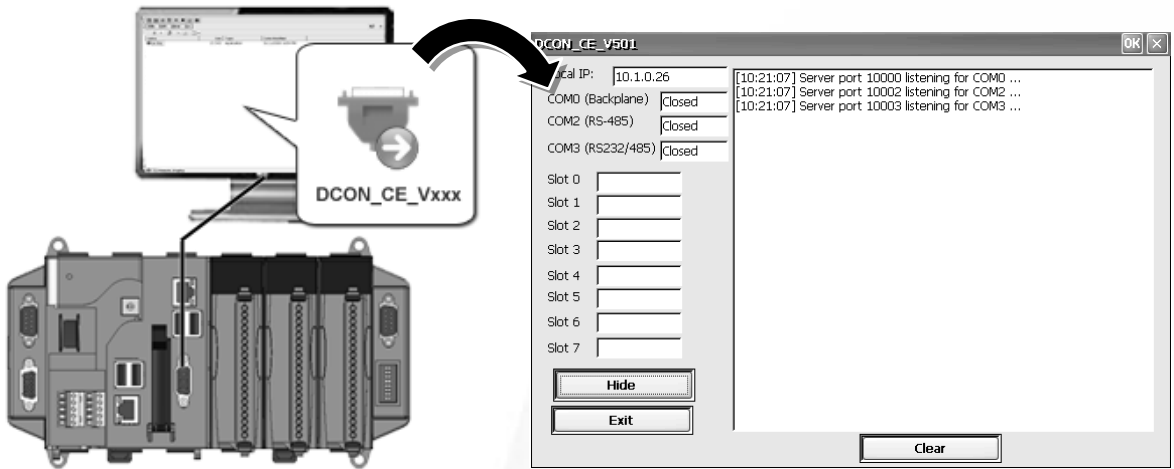
6

Configuring I-87K Modules

DCON Utility is a tool kit designed to quickly control and configure I-87K series expansion I/O modules on XP-8000-Atom-CE6.

Step 1 On XP-8000-Atom-CE6, double-click the server program,
“DCON_CE_XP.exe”

The “DCON_CE_XP.exe” are pre-installed on the XP-8000-Atom-CE6,
located under \System_Disk\Tools\DCON_CE\

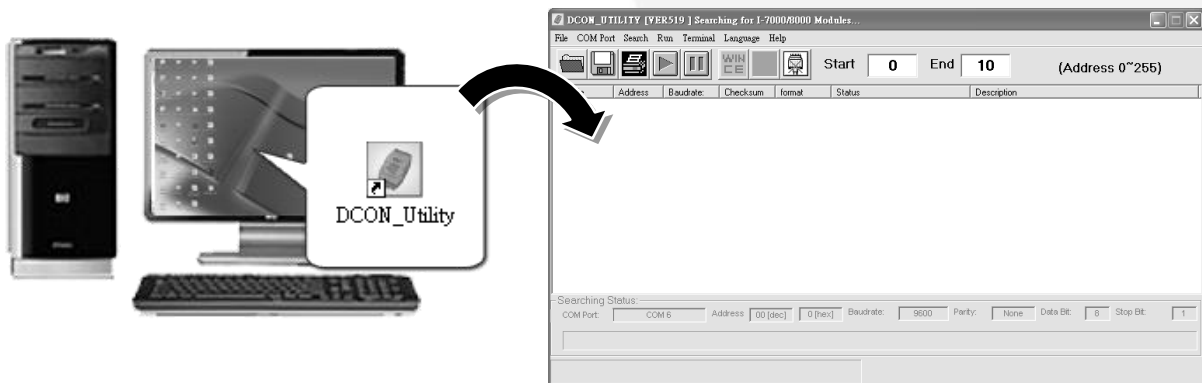


Step 2 On the Host PC, double-click the “DCON Utility” icon located on the
desktop.

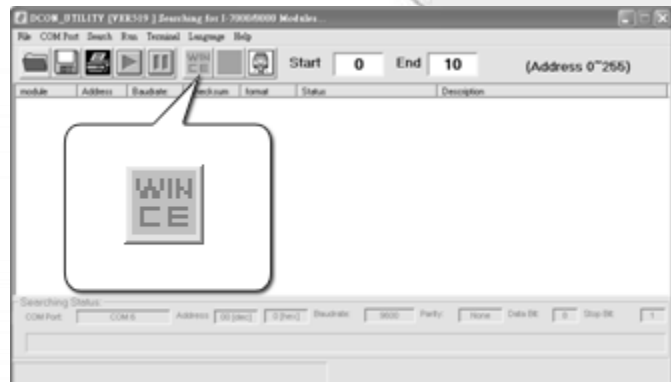
The “DCON Utility” can be installed from the CD that was provided with the
package or by downloading the latest version from ICP DAS web site.

CD:\XPAC-ATOM-CE6\PC_Tools\DCON_Utility\

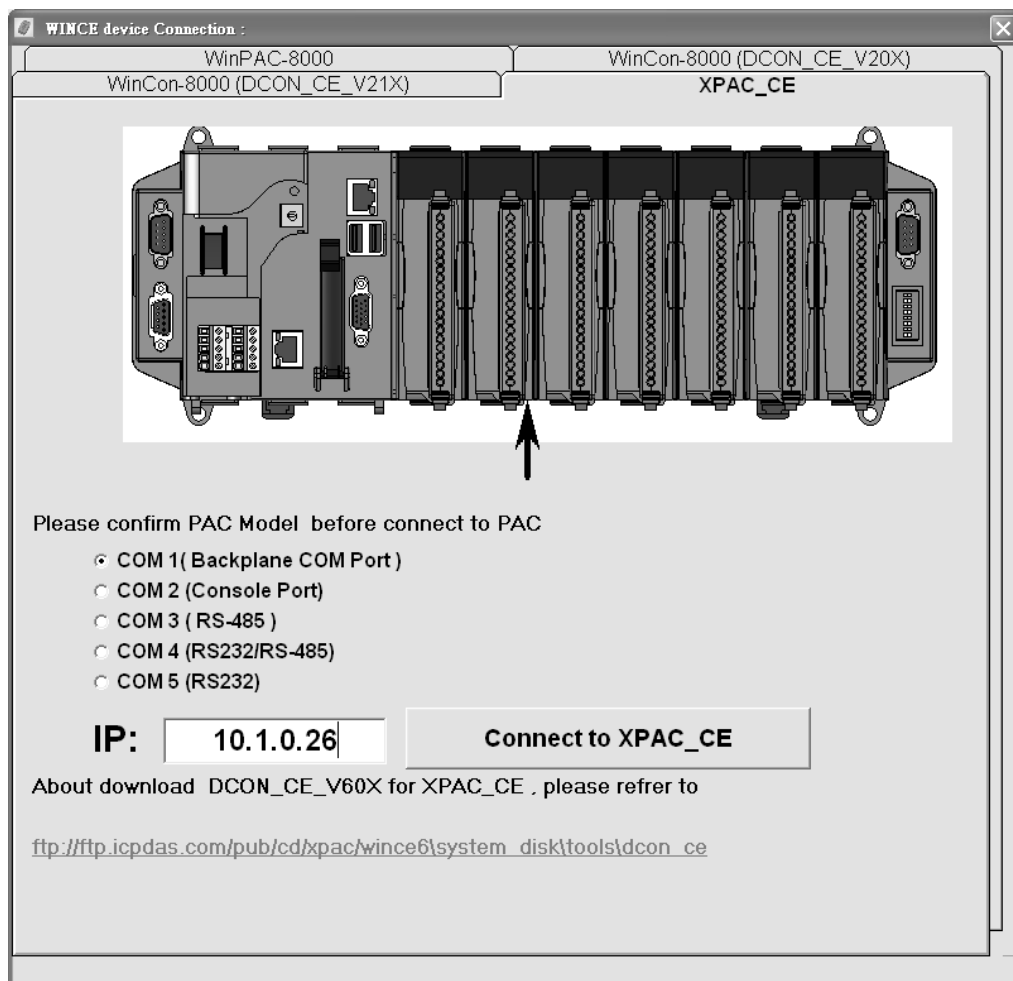
http://ftp.icpdas.com/pub/cd/xpac-atom-ce6/pc_tools/dcon_utility/



Step 3 In the DCON Utility
window, click the
“WIN CE” button to
open the “WINCE
Device Connection”
dialog box.



Step 4 In the “WINCE Device Connection” dialog box, click the “XPAC_CE” tab. Enter the IP address for the XP-8000-Atom-CE6 module, and then click the “Connect to XPAC_CE” button.

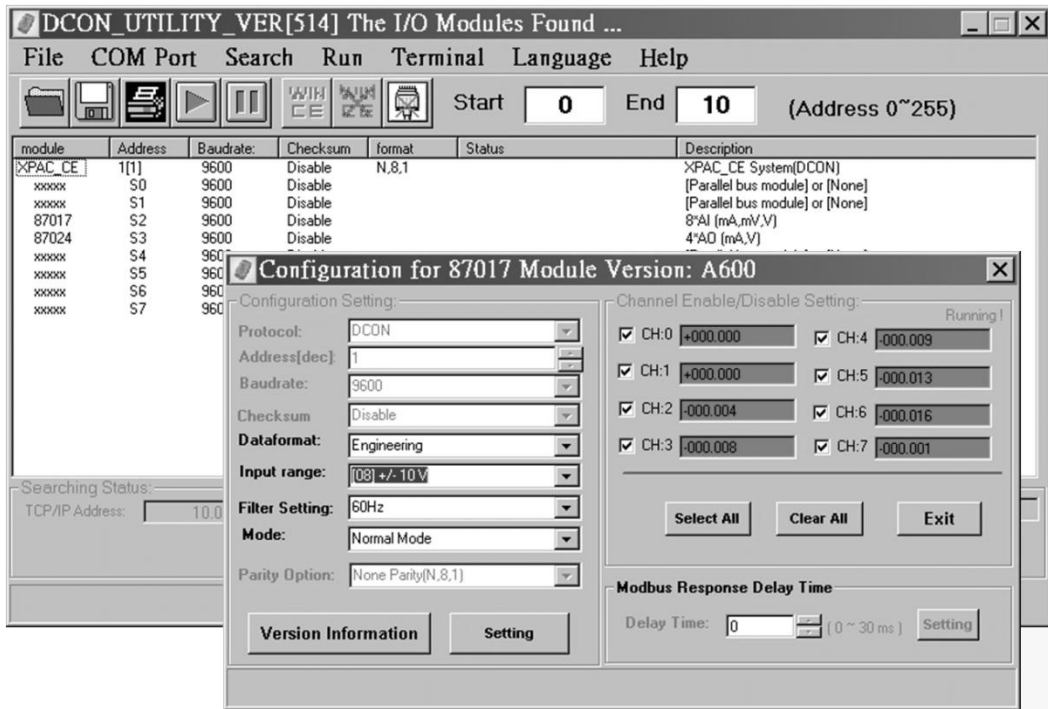


Tips & Warnings



If you are unable to establish a connection to the XP-8000-Atom-CE6 using the DCON Utility, check whether the Ethernet connection between the Host PC and the XP-8000-Atom-CE6 is being restricted by the firewall. Contact your network administrator for details of how to open the Ethernet port.

Step 5 In the DCON Utility window, click the name of the module from the name list to open the configuration form and control dialog box.



Tips & Warnings



If no operation is performed within 30 seconds, the connection will be automatically closed to release the COM port.



Additional Information

Once configuration of the module(s) is complete, you may begin developing your own applications. For more detailed instructions and additional application examples, please refer to the XP-8000-Atom-CE6 User Manual.