

Classification	NAPOPC_CE6 FAQ				No.	1-002-E	
Author	James	Version	1.0.0	Date	2010/7/12	Page	1/6

How to use ET-7000 modules in NAPOPC_CE6?

Applies to:

Platform	OS version	NAPOPC version
XP-8000-CE6	CE6	NAPOPC_CE6 v1.00

There are two ways to communicate with ET-7000:

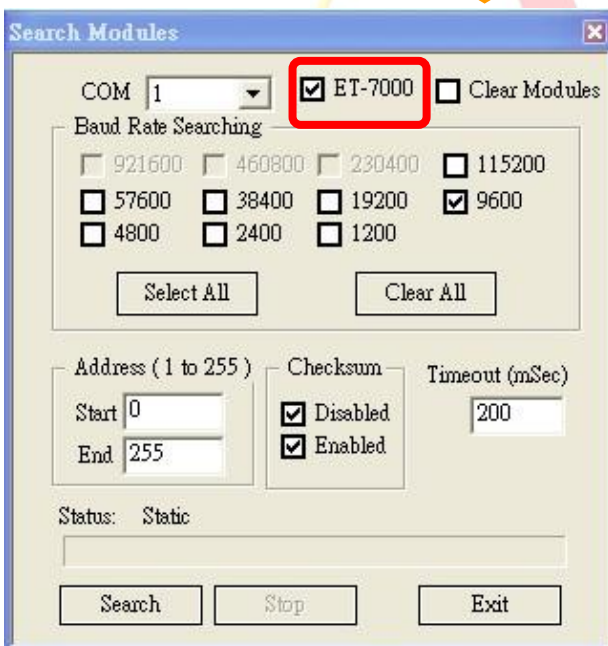
Search (Automatic) / Add Device (Manual)

We use ET-7060 as an example:

Search (Automatic)

Step 1

Click "Search" on the Toolbar, it will show you a dialog as below:



Just check "ET-7000" box, and then press "Search" button to search.

Classification	NAPOPC_CE6 FAQ				No.	1-002-E	
Author	James	Version	1.0.0	Date	2010/7/12	Page	2/6



Name	Type	Ch
Ch00	Coil Output	
Ch01	Coil Output	
Ch02	Coil Output	
Ch03	Coil Output	
Ch04	Coil Output	
Ch05	Coil Output	

Communication will be established, and you can exchange data between XP-8000-CE6 and ET-7060.



Classification	NAPOPC_CE6 FAQ				No.	1-002-E	
Author	James	Version	1.0.0	Date	2010/7/12	Page	3/6

Add Device (Manual)

Step 1

Click "Device" on the Toolbar, it will show you the dialog as below.



Select Device [X]

DCON
 FRnet
 Modbus

Device Name: ET-7060

Controller Setting:

Modbus RTU
 ISaGRAF
 General Modbus Device

Modbus TCP

IP Address: 192.168.100.60
Port: 502

COM Port Setting:

COM: 1 Parity: None
Baud Rate: 115200 Data Bits: 8
Stop Bits: 1

Request Tag Number: Coil: 122 Register: 122

Simulate I/O (does not access the RS-485/Modbus device)
 Pending Time: 1000 ms

OK Cancel

The protocol of ET-7060 is Modbus. Choose it first.

Modbus TCP mode

IP Address of ET-7060

Check the options which are marked, then click "OK" to add device.

Classification	NAPOPC_CE6 FAQ				No.	1-002-E	
Author	James	Version	1.0.0	Date	2010/7/12	Page	4/6

Step 2

After adding ET-7060, click "Group" on the Toolbar to add group for ET-7060. Input group name in the "Group" dialog. (For example, group name is "DI".)

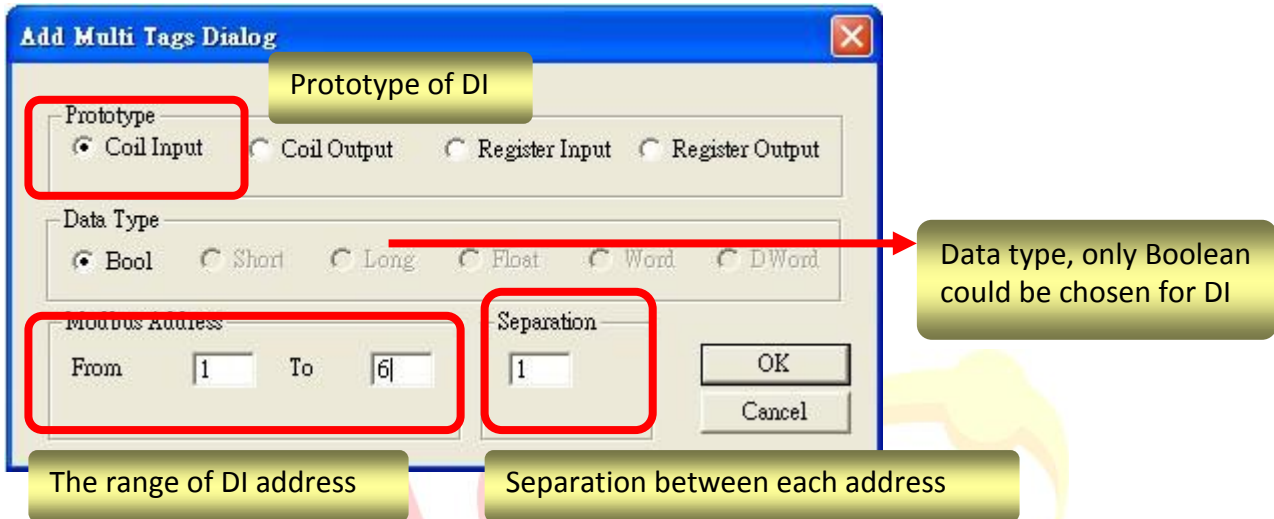
The screenshot shows the software interface with a toolbar at the top. The 'Group' button, represented by a cluster of colored circles, is highlighted with a red box. Below the toolbar, a tree view shows a folder named 'ET-7060'. A 'Group' dialog box is open, with the 'Name' field containing the text 'DI'. The 'OK' and 'Cancel' buttons are visible. A yellow arrow points downwards from the dialog box to the next screenshot.

The second screenshot shows the same software interface. The 'Multi..' button on the toolbar is now highlighted with a red box. In the tree view, the 'ET-7060' folder is expanded, and a sub-item named 'DI' is visible, also highlighted with a red box.

Classification	NAPOPC_CE6 FAQ				No.	1-002-E	
Author	James	Version	1.0.0	Date	2010/7/12	Page	5/6

Step 3

Now ET-7060 has “DI” group, you should add tags inside “DI” group. Click “Multi tags” on the Toolbar.



Click “OK” to add tags after checking these options.

Step 4



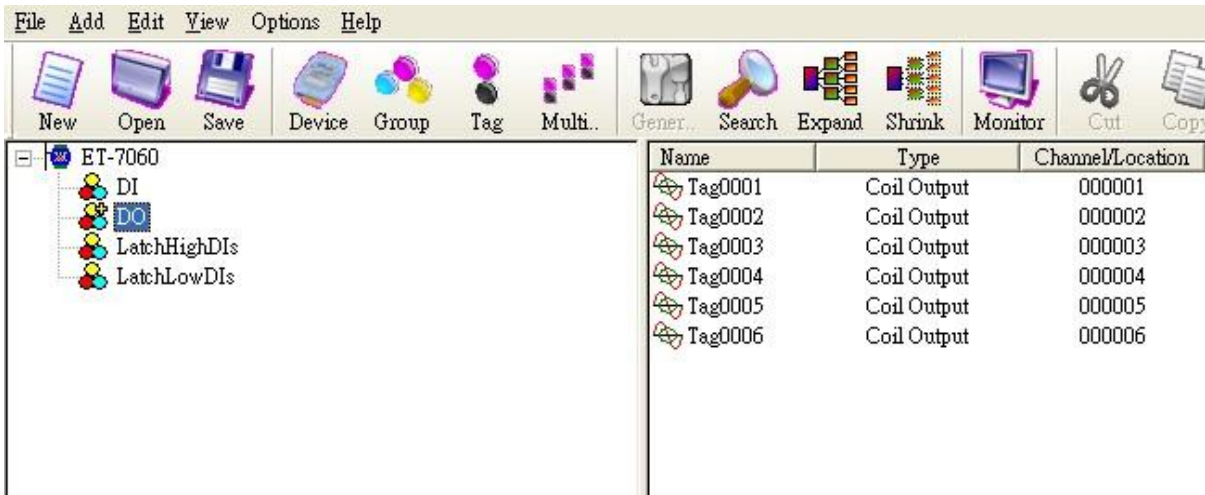
You could communicate with DI of ET-7060 now. You could also add other tags as the same way just notice the difference of address and Prototype.

DO: 1~6 (Coil Output)

LatchHighDIs: 33~38

LatchLowDIs 65~70

Classification	NAPOPC_CE6 FAQ				No.	1-002-E	
Author	James	Version	1.0.0	Date	2010/7/12	Page	6/6



Finally, you could accomplish the entire communication between NAPOPC_CE6 and ET-7060.

⚠ Caution:

In the whole procedure you will have several actions about “add” something, such as “Group” or “Tag”. Before adding something for a certain part, **you have to click the part first, and then you could add what you want.**

For example:

If you intend to add tags for “DO” group, you should click “DO” in the group list to focus on the group, and then click “Multi tags” to add tags. This is the correct way to add group/tag.