

Classification	System and Application FAQ on XPAC				No.	1-003-01	
Author	WeiKai	Version	1.0.1	Date	2012/6/25	Page	1/5

How to set up a printer on LAN network

Applies to:

<i>Platform</i>	<i>OS Version</i>	<i>XPAC Utility Version</i>
<i>XPAC Series</i>	<i>All Versions (WinCE6)</i>	<i>All Versions</i>

Tips & Warnings



The “Local printer attached to this computer” option is only used for XPAC to add a shared printer via the network.



Tips & Warnings



XPAC only operates with HP Laser Jet Printers that support the PCL6 driver.

HP provides drives support for the following printers

- HP LaserJet 4000 series/HP LaserJet 4100 series
- HP LaserJet 2100 series/HP LaserJet 2200 series
- HP LaserJet 1200
- HP LaserJet 3200/HP LaserJet 3300
- HP LaserJet 4200 series/HP LaserJet 4300 series
- HP LaserJet 5000 series/HP LaserJet 5100 series
- HP LaserJet 8000 series
- HP LaserJet 9000 series

For the latest drivers for HP PCL6 printers, refer to the following:

<http://h20000.www2.hp.com/bizsupport/TechSupport/Document.jsp?objectID=bpl04568>

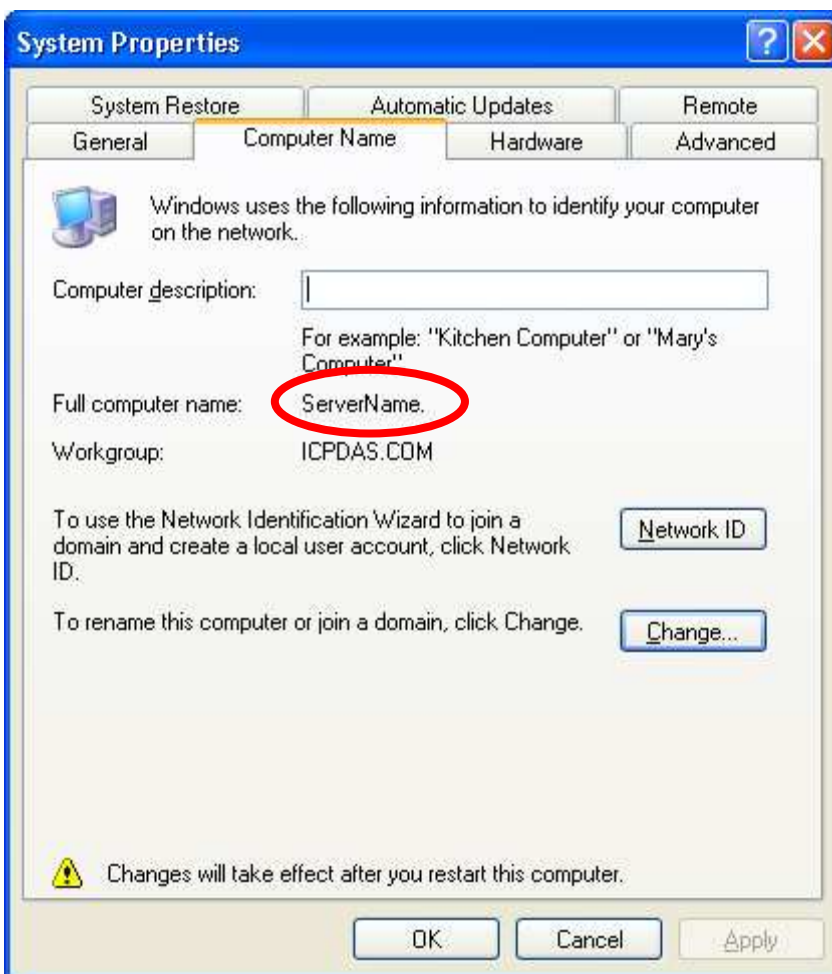
Classification	System and Application FAQ on XPAC				No.	1-003-01	
Author	WeiKai	Version	1.0.1	Date	2012/6/25	Page	2/5

To use a shared printer connected to the LAN network, follow the steps below to set the PC and XPAC:

On the host PC

Before starting the steps to share a printer, make sure that the printer driver is installed already on host PC and it works well.

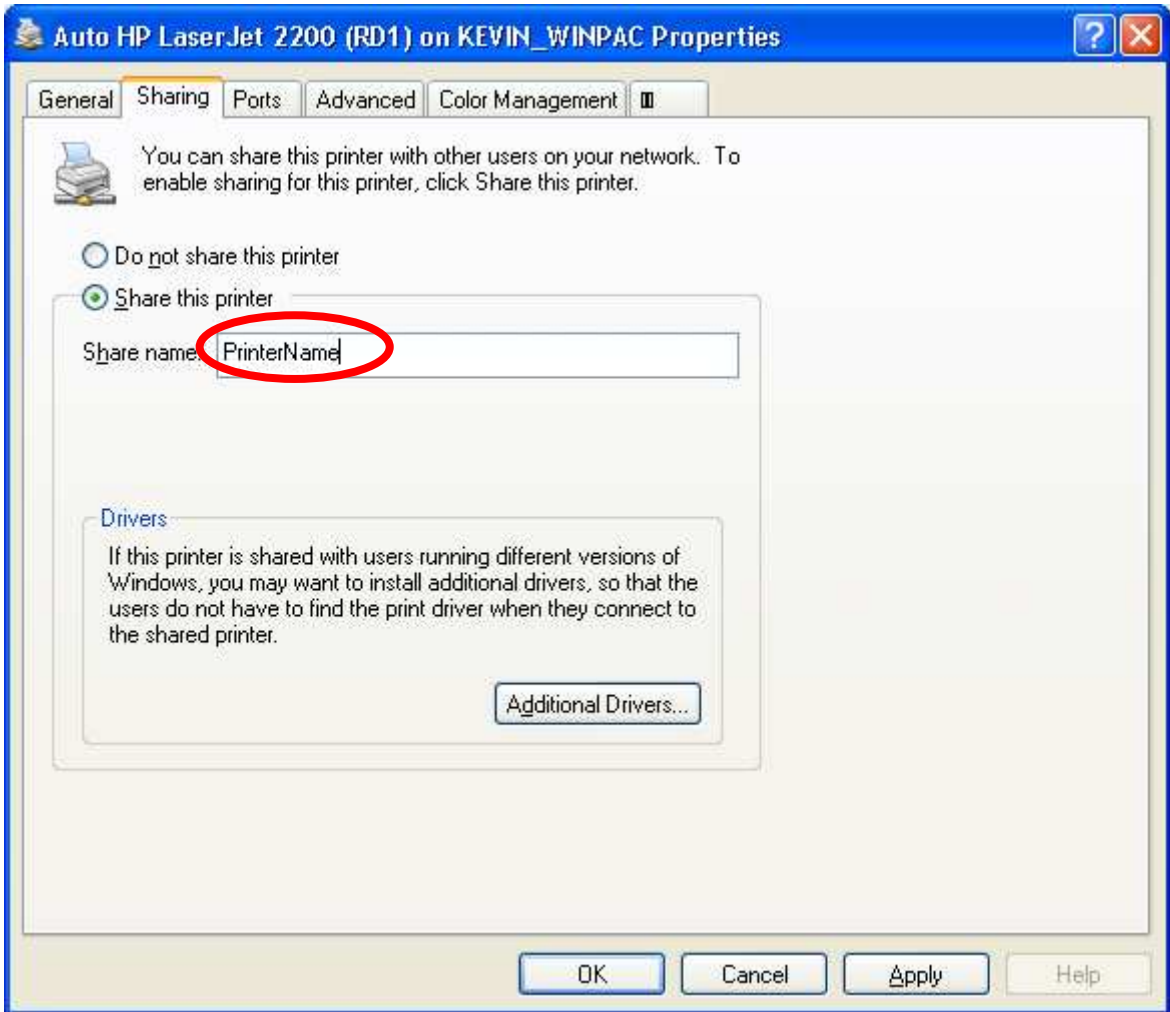
- 1: Click "Start" → "Control Panel" and double-click the "System" icon
- 2: Select the "Computer name" tab and check the name listed next to the "Full computer name" item. Record the details in a safe place for future reference.



Classification	System and Application FAQ on XPAC				No.	1-003-01	
Author	WeiKai	Version	1.0.1	Date	2012/6/25	Page	3/5

3: Click "Start" → "Printers and faxes" then right click on the icon for the printers you wish to set up, select "Properties" to open the "Printer Properties" dialog window and select the "sharing" tab as below.

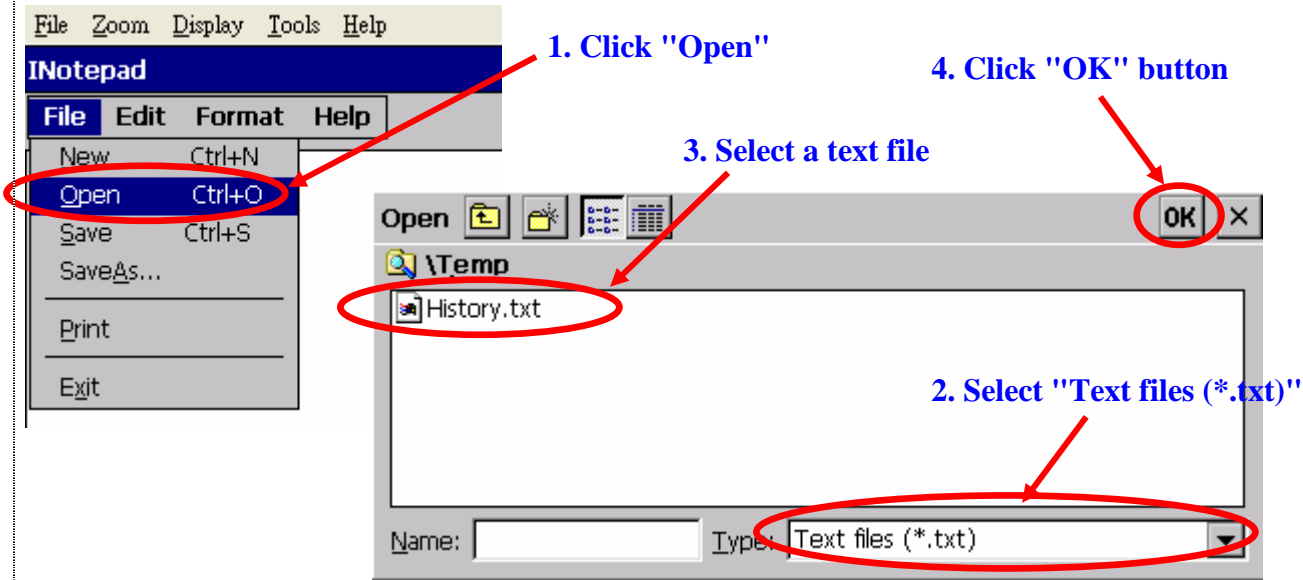
4: Check the name listed in the "share name" text box.
Also record these details for future reference.



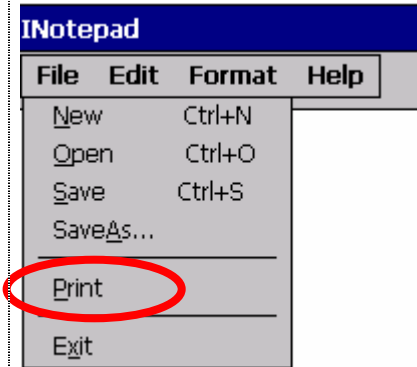
Classification	System and Application FAQ on XPAC				No.	1-003-01	
Author	WeiKai	Version	1.0.1	Date	2012/6/25	Page	4/5

On the XPAC

1: Execute INotepad from the "/System_Disk/Tools/INotepad" folder.
 Click "File" → "Open" to open a text file (*.txt, *.ini...), and then click the "OK" button.



2: Click "File" -> "Print"



Classification	System and Application FAQ on XPAC				No.	1-003-01	
Author	WeiKai	Version	1.0.1	Date	2012/6/25	Page	5/5

3: Select the printer from the "printer" dropdown menu and select the "Network" option from the "port" dropdown menu

4: Enter "\\ServerName\PrinterName" details that you obtained on the host PC (page 2 and 3) into the "Net path" text field, and then click the "OK" button.

