

Classification	System and Application FAQ on XPAC				No.	1-001	
Author	Weikai	Version	1.0.0	Date	2012/11/1	Page	1/4

## How to set up an ADSL PPPoE connection?

Applied to:

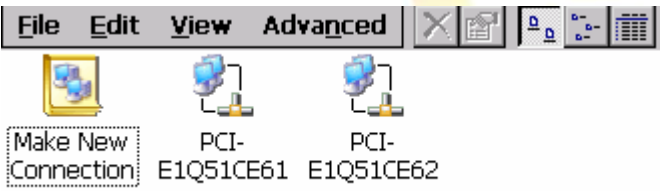
Platform	OS version	XPAC utility version
XP-8000-CE6	1.3.5.0 later	All versions
XP-8000-Atom-CE6	1.0.0.2 later	All versions

The PPPOE service settings must be configured by the user, and perform the following steps:

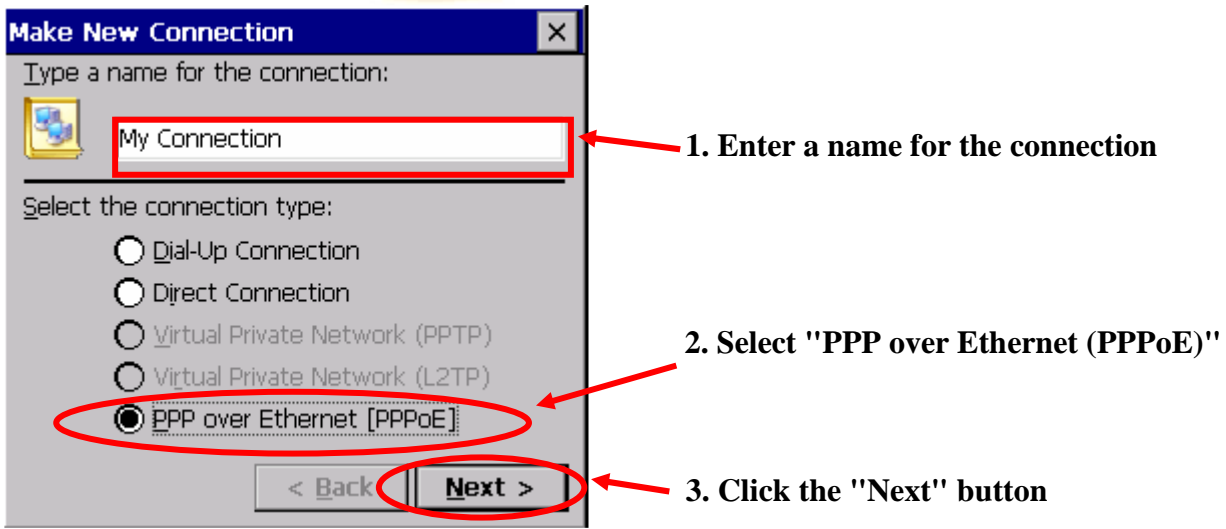
**Step 1:** Open the Network settings by clicking "Settings" → "Control Panel" and then double-click the "Network and Dial-up connections" icon.



**Step 2:** Double-click the "Make New Connection" icon to create a new connection.

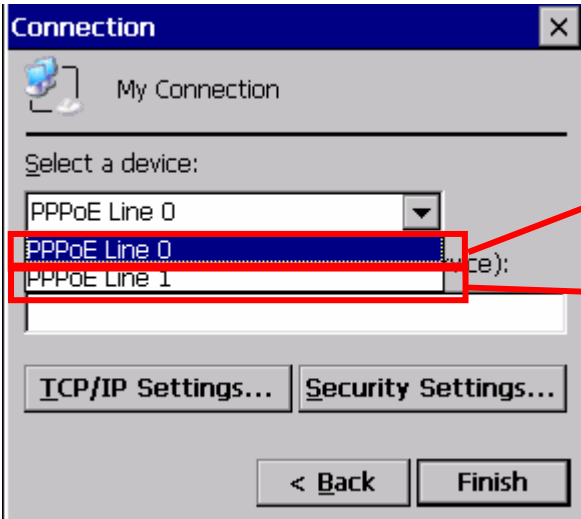


**Step 3:** In the "Make New Connection" dialog box, enter a name for the connection and select the "PPP over Ethernet (PPPoE)" option as the connection type, and then click the "Next" button.



Classification	System and Application FAQ on XPAC				No.	1-001	
Author	Weikai	Version	1.0.0	Date	2012/11/1	Page	2/4

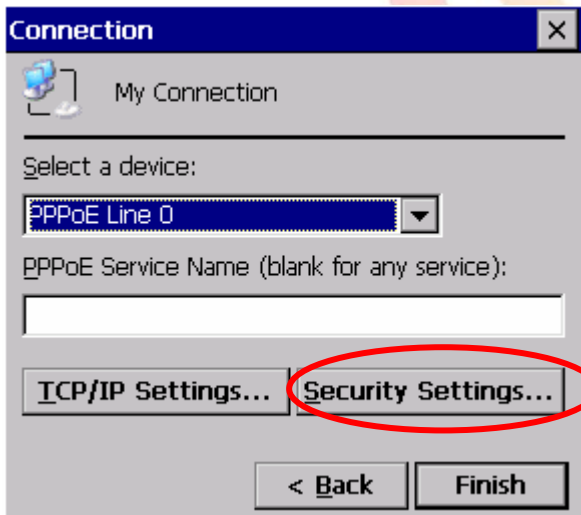
**Step 4:** In the "Select a device" drop-down menu, select the "PPPoE Line 0" option indicated as the dial-up connection from LAN1, select the "PPPoE Line 1" option indicated as the dial-up connection from LAN2.



Select the Dial-up connection from LAN1

Select the Dial-up connection from LAN2

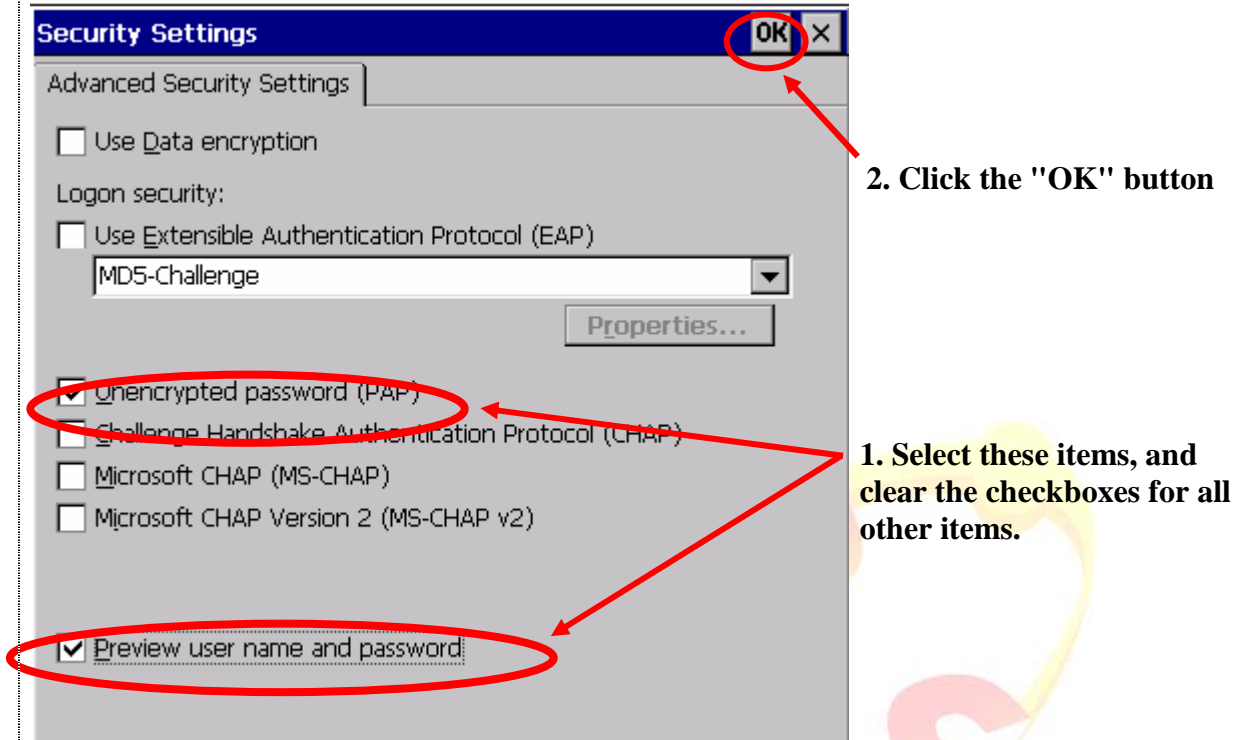
**Step 5:** Click the "Security Settings" button.



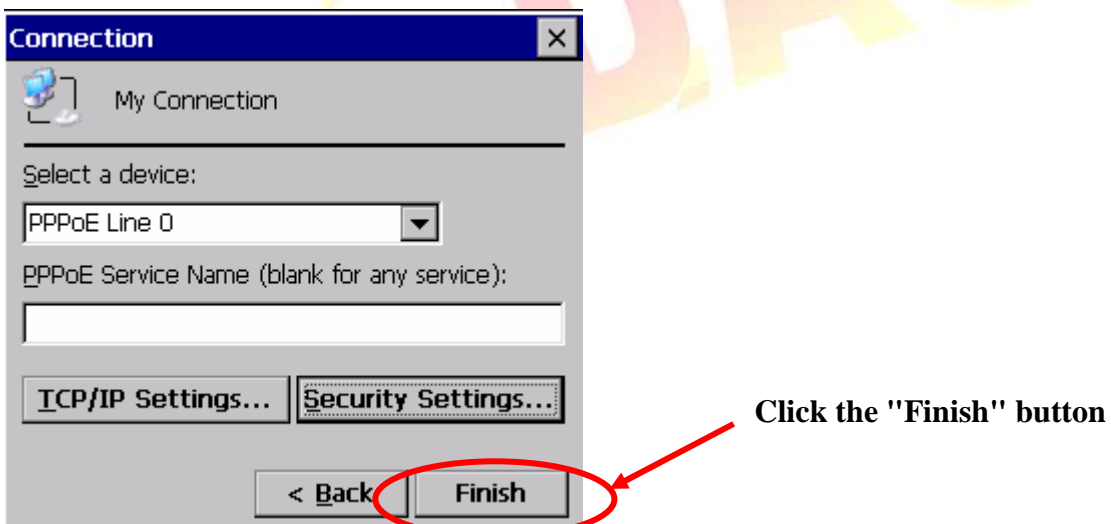
Click the "Security Settings" button

Classification	System and Application FAQ on XPAC				No.	1-001	
Author	Weikai	Version	1.0.0	Date	2012/11/1	Page	3/4

**Step 6:** In the "Security Settings" dialog box, check the "Unencrypted password (PAP)" and the "Preview user name and password" checkbox items, and clear check boxes for all other items, then click the "OK" button.

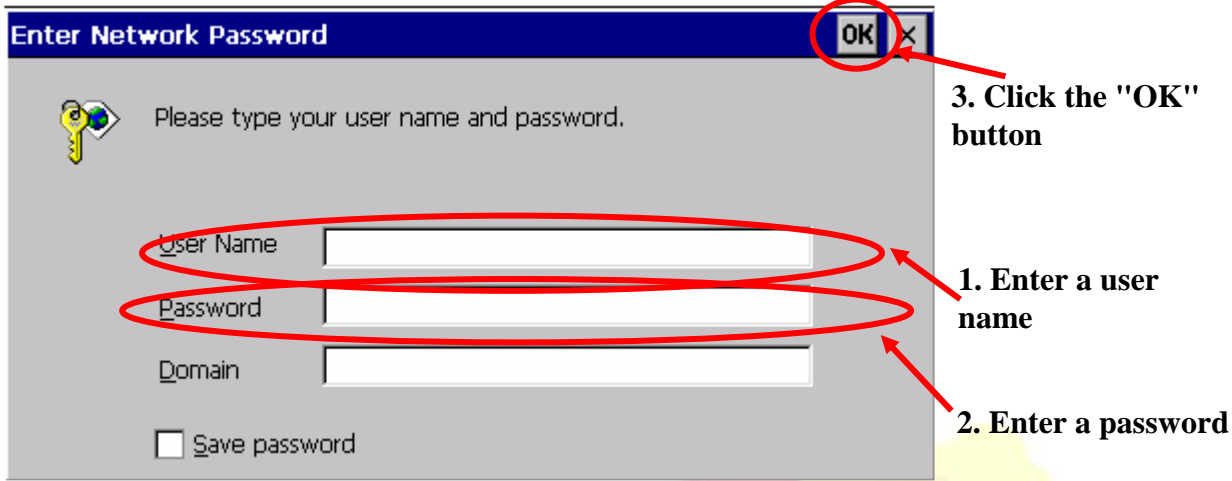


**Step 7:** Click the "Finish" button to save the settings and complete the creation of the new connection.



Classification	System and Application FAQ on XPAC				No.	1-001	
Author	Weikai	Version	1.0.0	Date	2012/11/1	Page	4/4

**Step 8:** In the Network settings window, double-click the icon for the new PPPoE connection and then enter a user name and password in the login window. If you wish to save the password for future use, check the "Save password" checkbox. Click the "OK" button to establish a connection.



**Step 8:** A status window will be displayed with the message "Connected", indicating that the connection was successfully established.

