

XP-8000-Atom-CE6 Quick Start Guide

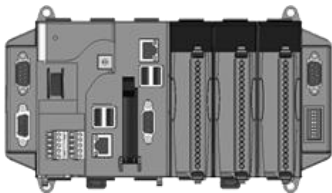
Version 1.0.3, June 2012

Congratulations!

Congratulations on purchasing XP-8000-Atom-CE6 - the most popular automation solution for remote monitoring and control application. This Quick Start Guide intends to provide information for getting started with XP-8000-Atom-CE6. Please also consult the User Manual for detailed information on the setup and use of XP-8000-Atom-CE6.

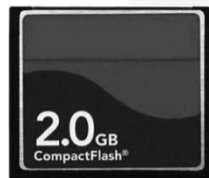
What's In the Box?

In addition to this guide, the package includes the following items:



XP-8000-Atom-CE6 Module

XP-8141-Atom-CE6
XP-8341-Atom-CE6
XP-8741-Atom-CE6



2 GB CF card



Software Utility CD



Screw Driver

(1C016)
2.4 mm

Technical Support

● XP-8000-Atom-CE6 User Manual

CD:\XPAC-ATOM-CE6\Document\User_Manual\

http://ftp.icpdas.com/pub/cd/xpac-atom-ce6/document/user_manual/

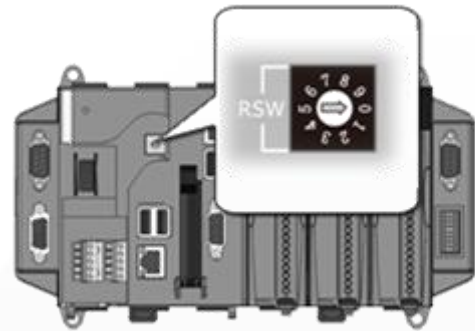
● XP-8000-Atom-CE6 Website

http://www.icpdas.com.tw/product/solutions/pac/xpac-atom/xpac-atom_introduction.html

1

Configuring the boot mode

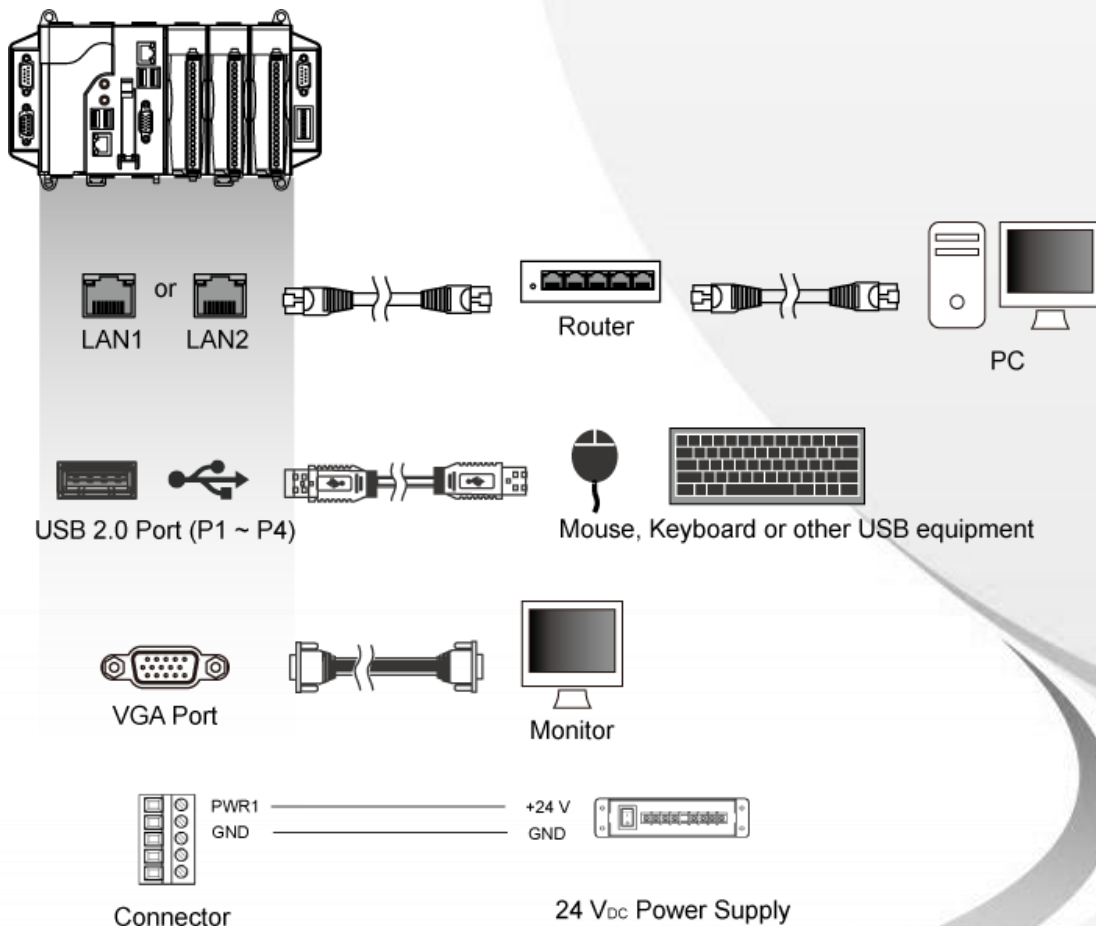
Before starting any installation, be sure that the switch is placed in the "0" position.



2

Connecting Peripherals

- Connect the LAN port to a router (or hub).
- Connect the USB mouse and USB keyboard to the USB port.
- Connect the monitor to the VGA port.
- Connect the +24 V_{DC} power supply to PWR1 and GND terminals.



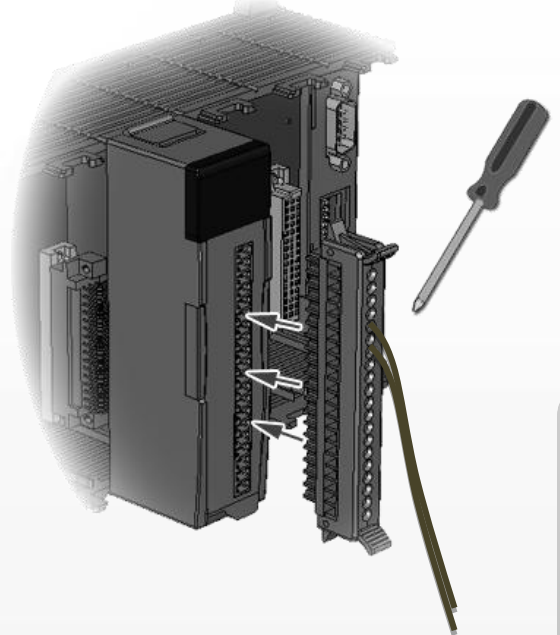
3

Inserting the I/O Modules

Only high profile I-8K and I-87K series modules can be plugged into XP-8000-Atom-CE6.

For more information about this expansion I/O modules, please refer to

http://www.icpdas.com/products/PAC/xpac/IO_Expansion.htm



4

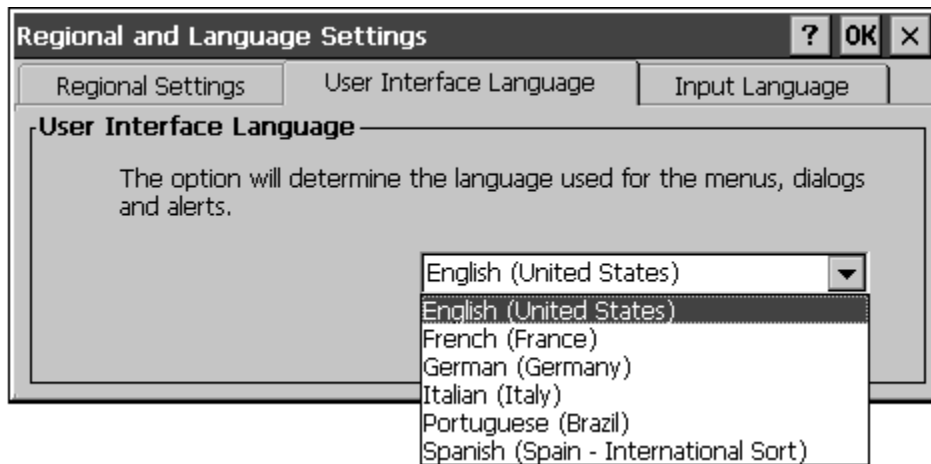
Changing the User Interface Language

The "Regional Settings" is a Windows CE functionality that allows users to easily change the XP-8000-Atom-CE6 user interface with your native language.

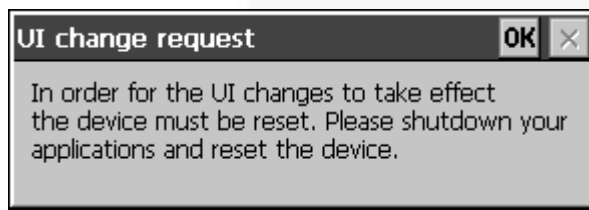
Step 1 Click "Start" >> "Settings" >> "Control Panel", and then click "Regional Options"



Step 2 Click “User Interface Language” tab, choose your local language from drop-down menu, and then click “OK”



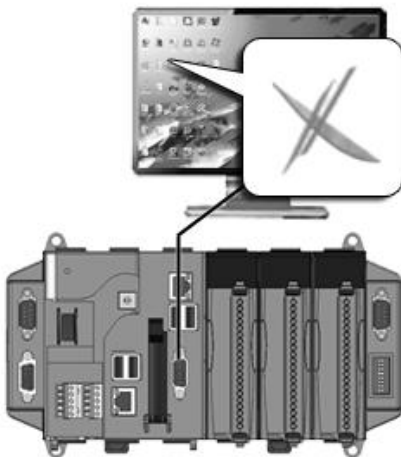
Step 3 Click “OK”, and then reboot the XP-8000-Atom-CE6 for changes to take effect



5

Configure the XP-8000-Atom-CE6

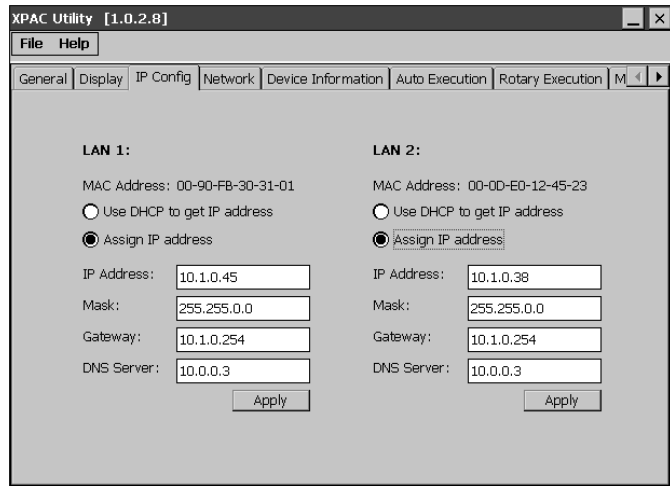
The XPAC Utility is a tool kit designed to quickly control and configure XP-8000-Atom-CE6.



Step 1 Double-click the “XPAC Utility” icon located on the desktop



Step 2 Configure the IP(DHCP), FTP Server, Auto Execution, etc

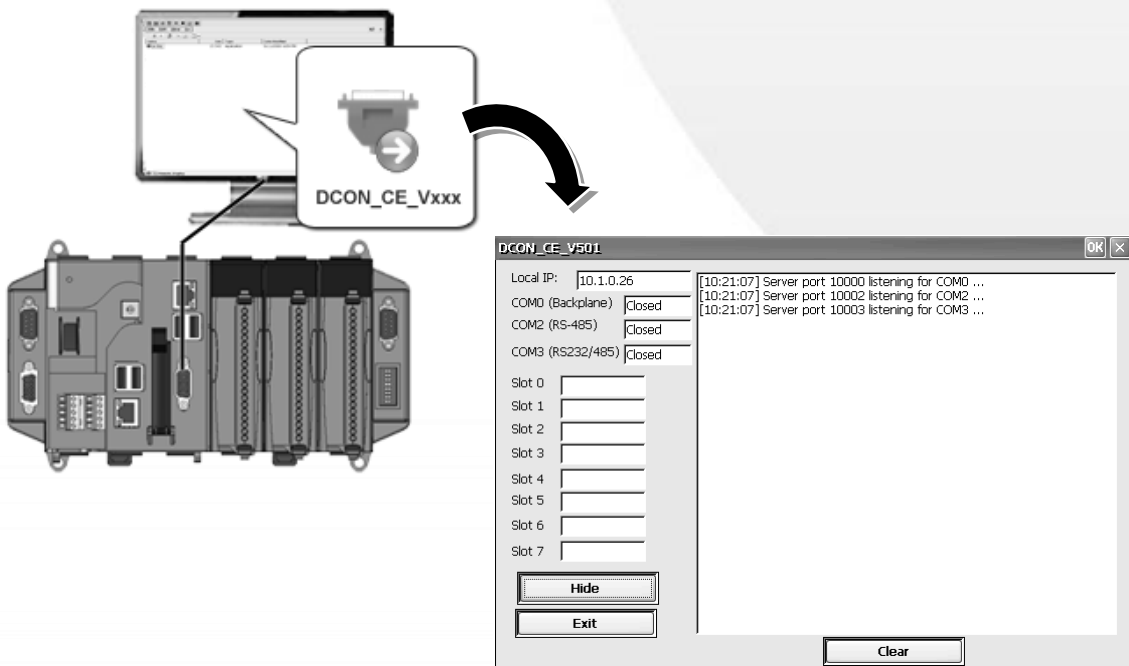


6 Configure I-87K Modules

DCON Utility is a tool kit designed to quickly control and configure I-87K series expansion I/O modules on XP-8000-Atom-CE6.

Step 1 On XP-8000-Atom-CE6 side, double-click the server program, “DCON_CE_XP.exe”

The “DCON_CE_XP.exe” are pre-installed on the XP-8000-Atom-CE6, located under \System_Disk\Tools\DCON_CE\

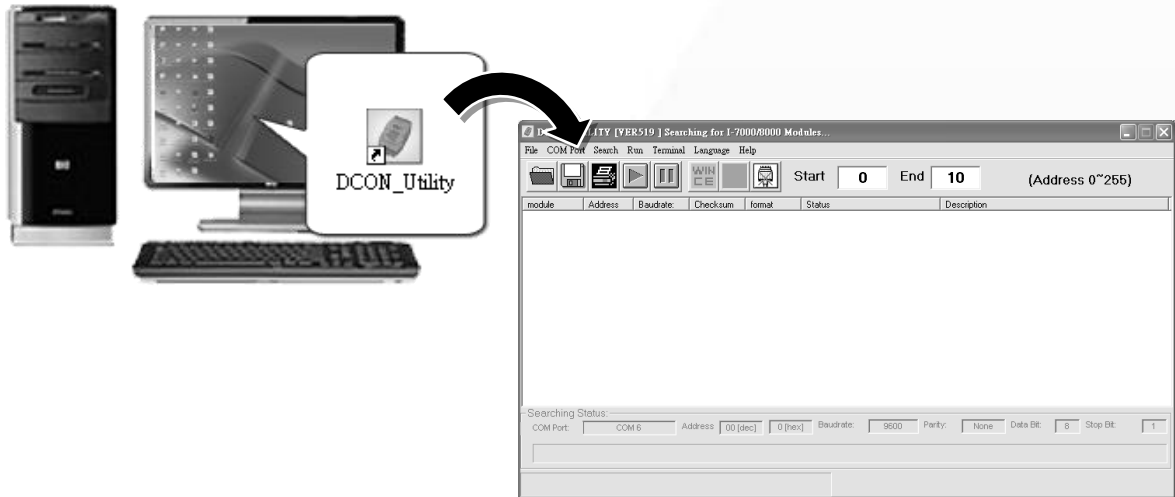


Step 2 On PC side, double-click the “DCON Utility “

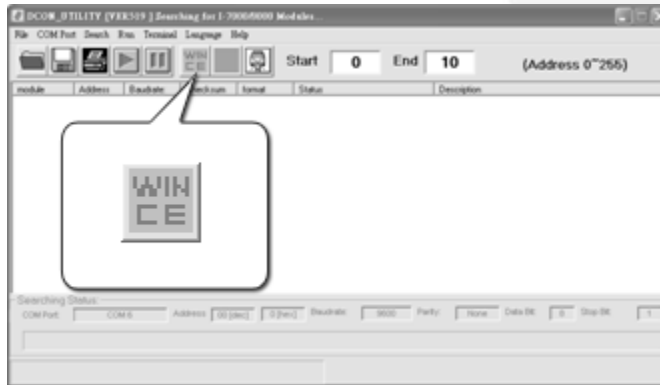
The “DCON Utility” can be installed from the CD that was provided with the package or by downloading the latest version from ICP DAS web site.

CD:\XPAC-ATOM-CE6\PC_Tools\DCON_Utility\

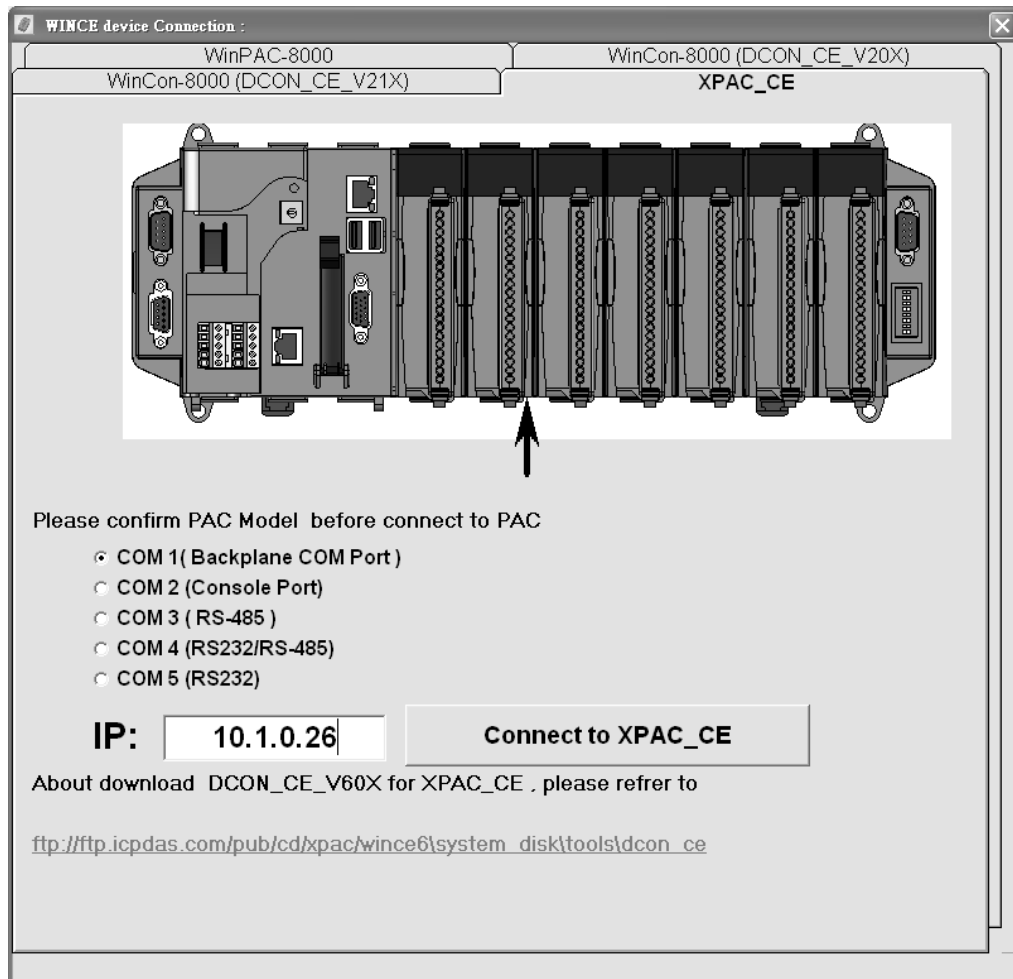
http://ftp.icpdas.com/pub/cd/xpac-atom-ce6/pc_tools/dcon_utility/



Step 3 Click the “WINCE” common button



Step 4 Click the “XPAC_CE” tab, type the IP address of the XP-8000-Atom-CE6, and then click the “Connect to XPAC_CE” button

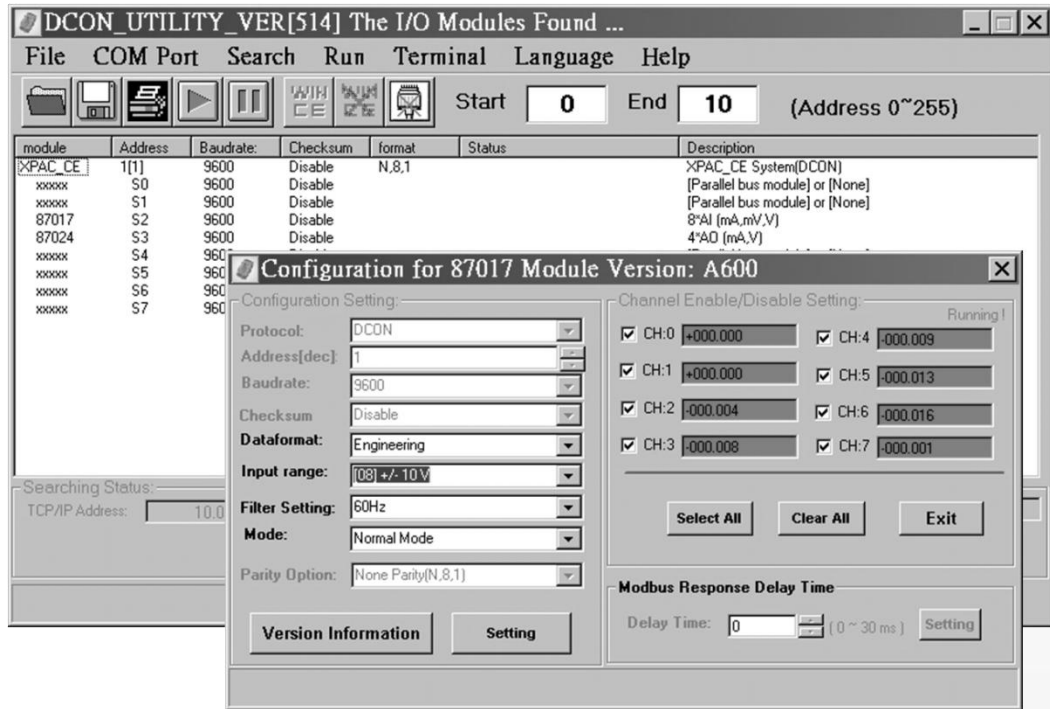


Tips & Warnings



If the DCON Utility cannot connect to XP-8000-Atom-CE6, the Ethernet connection between the host PC and the XP-8000-Atom-CE6 might be rejected by fire wall, please contact with MIS to open the Ethernet port.

Step 5 Click the module name from the list to enter the configure form and control form



Tips & Warnings



If there is no operation within 30 seconds, the connection will automatically close to release the COM port occupied.



Additional Information

After you have finished configuring your module(s), you may start to develop your own applications. For detailed instructions and more applications, please refer to XP-8000-Atom-CE6 User Manual.