

Classification	NAPOPC_CE6 FAQ				No.	1-004-E	
Author	James	Version	1.0.0	Date	2010/7/12	Page	1/4

How to use ZigBee modules in NAPOPC_CE5?

Applies to:

<i>Platform</i>	<i>OS version</i>	<i>NAPOPC version</i>
<i>XP-8000-CE6</i>	<i>CE6</i>	<i>NAPOPC_CE6 v1.00</i>

Assume that we now have a group of Zigbee modules:

ZB-2550 (Host Converter)

ZB-2052 (DI)

ZB-2060 (DIO)

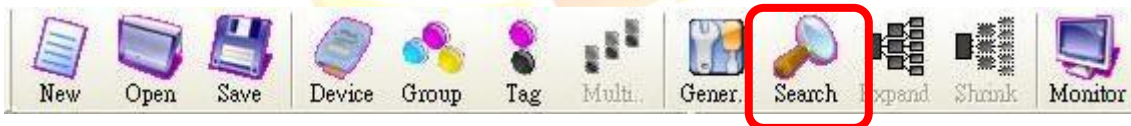
If we can connect NAPOPC_CE6 to ZB-2550, then we can exchange data with ZB-2052 / ZB-2060 further.

We have two ways to establish communication:

Search (Automatic) / Add device (Manual)

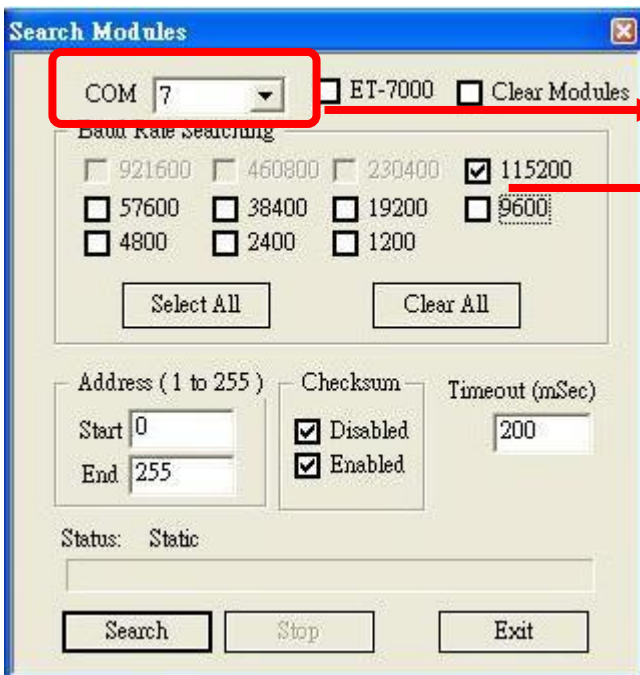
Search (Automatic)

Step 1



Click "**Search**" on the Toolbar to scan modules connected with your PC. It will show you the dialog as below. After setting up, just click "search".

Classification	NAPOPC_CE6 FAQ				No.	1-004-E	
Author	James	Version	1.0.0	Date	2010/7/12	Page	2/4

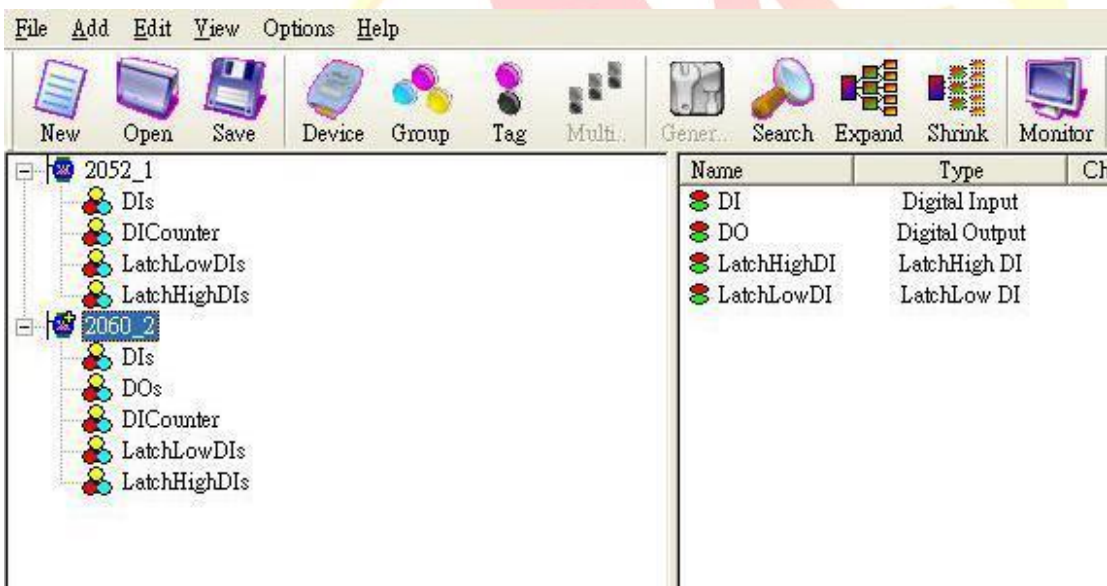


COM port connected with ZB-2550

Baud rate between PC and ZB-2550

Step 2

After searching, NAPOPC_CE6 is able to communicate with ZB-2052 and ZB-2060.



Classification	NAPOPC_CE6 FAQ				No.	1-004-E	
Author	James	Version	1.0.0	Date	2010/7/12	Page	3/4

Add device (Manual) (DCON)

Step 1



Click "Device" on the Toolbar, it will show you the dialog as below. Check the options which are marked, then click "OK" to add device.

Select Device

Protocol between XP-8000-CE6 and ZB-2550

DCON

Device Name: 2052

I-7K/I-8K/I-87K/ZB-2K I/O Module

Module Setting:

- Remote: 7K, ZB-2K, 2052 (Module name)
- With Controller: Controller, 87K
- 8K

Address: 1 (Address of ZB-2052)

Slot: 0

Checksum: Disable

COM Port Setting:

- COM: 7
- Baud Rate: 115200 (COM port connected with ZB-2550, Baud rate between PC and ZB-2550)
- Parity: None
- Data Bits: 8
- Stop Bits: 1

RPC

Controller Setting:

IP Address: 192.168.0.1

Simulate I/O (does not access the RS-485/Modbus device)

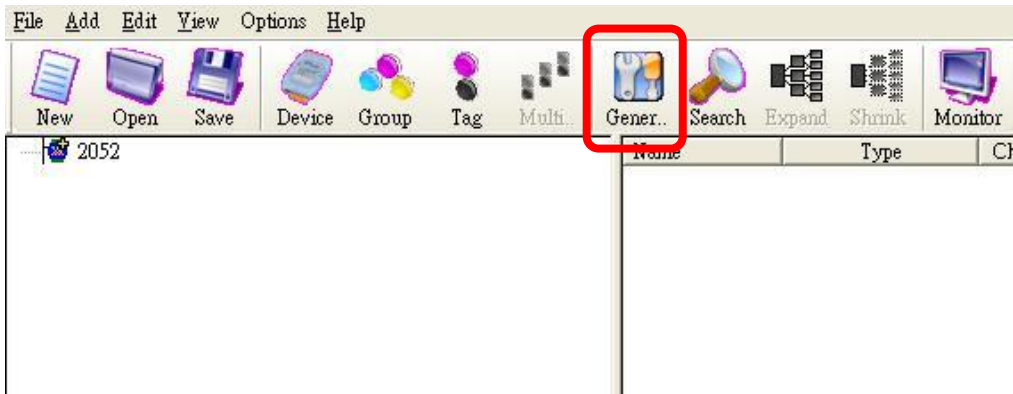
Pending Time: 1000 ms

OK Cancel

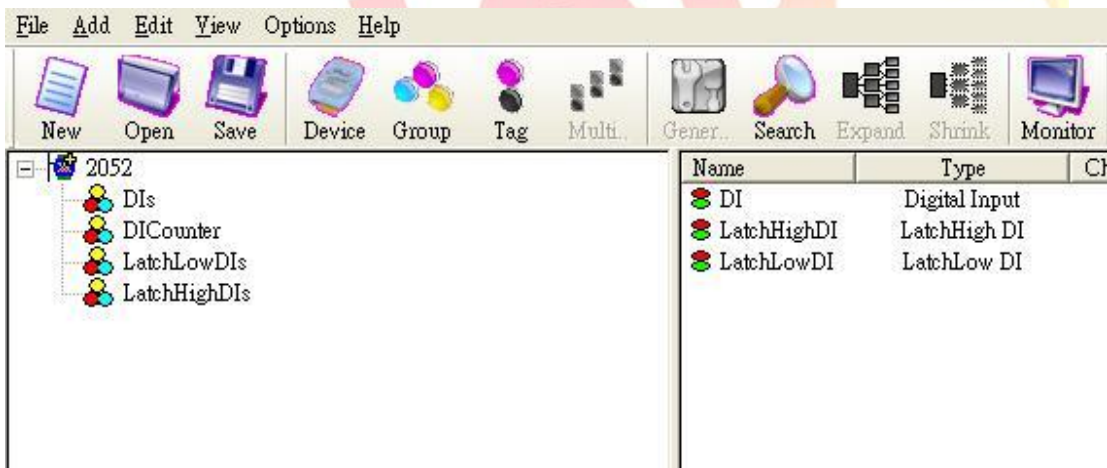
Classification	NAPOPC_CE6 FAQ				No.	1-004-E	
Author	James	Version	1.0.0	Date	2010/7/12	Page	4/4

Step 2

ZB-2052 is added :



Click "Generate Tag" on the Toolbar, it will add all tags according to the ZB-2052 specification.



Step 3

Use the same procedure to establish ZB-2060. And then NAPOPC_CE6 will be able to communicate with ZB-2052 and ZB-2060.