

Classification	Update software FAQ on XPAC				No.	4-01-01	
Author	Weikai	Version	1.0.2	Date	2012/6/25	Page	1/9

How to update the OS image for the XP-8000-CE6

Applies to:

Platform	OS Version	XPAC utility Version
XP-8000-CE6	All versions (WinCE6)	All versions
XP-8000-Atom-CE6	N/A	N/A

N/A: Not applicable to this platform and OS.

The XP-8000-CE6 update is part of the XP-8000-CE6 services for providing additional and more efficient features and functionality for the XP-8000-CE6 operating system.

There are two ways to update the XP-8000-CE6:

i. Only update the OS image

Each release will contain new features, improved reliability and application compatibility, enhanced security, and more. Before downloading any release files, we highly recommend that you read the release notes, which contains all of this release

Please refer to the documents at ftp://ftp.icpdas.com/pub/cd/xp-8000-ce6/os_image/ for more details.

ii. Reinstalling the XP-8000-CE6

If you don't wish to simply update the OS image, you can install a new version of the XP-8000-CE6 OS on your device. In addition to updating the OS image, the System_disk also be updated.

The XP-8000-CE6 can be reinstalled using the XP-8000-CE6 Rescue Utility. Before reinstalling the XP-8000-CE6, make sure the necessary update files are available on your CF card.

The necessary files can be obtained from:

<ftp://ftp.icpdas.com/pub/cd/xp-8000-ce6/rescue>

Classification	Update software FAQ on XPAC				No.	4-01-01	
Author	Weikai	Version	1.0.2	Date	2012/6/25	Page	2/9

Caution:

1. Before installing the XP-8000-CE6, please check that you have backed up your data.
2. Ensure that your XP-8000-CE6 is running in normal mode (i.e., the rotary switch is in position 0) when installing the XP-8000-CE6.

Only updating the OS image

To update OS image only, please follow the steps below

Step 1: Download the OS image, NK.bin, from:

<ftp://ftp.icpdas.com/pub/cd/xp-8000-ce6/rescue/ce6>

Step 2: Replace the old OS image, which should be located in the \System_Disk folder on the XP-8000-CE6 device, with the new OS image that was downloaded in step 1.

Step 3: Replace all files located in the \System_Disk\icpdas folder on the XP-8000-CE6 device with all files from ftp://ftp.icpdas.com/pub/cd/xp-8000-ce6/system_disk/icpdas/

Step 4: After replacing+ the image and restarting the device, the XP-8000-CE6 will have been updated completely.

Reinstalling the XP-8000-CE6

Warnings:

- The XP-8000-CE6 should be in **normal mode**, which means that the **rotary switch should be in position 0**, before restoring the XP-8000-CE6 to factory default settings.
- When reinstalling the XP-8000-CE6, it will not only clear built-in flash (System_Disk), but also restore all files in the System_Disk folder.
- Before reinstalling the XP-8000-CE6, please check you have backed up your data.

Requirement for reinstalling the XP-8000-CE6

Step 1: Download all update files from:

<ftp://ftp.icpdas.com/pub/cd/xp-8000-ce6/rescue>

Classification	Update software FAQ on XPAC				No.	4-01-01	
Author	Weikai	Version	1.0.2	Date	2012/6/25	Page	3/9

Step 2: Copy the files that were downloaded in Step 1 to the root directory of the CF card

To reinstall XP-8000-CE6, please follow the steps below

Warning: XP-8000-CE6 showed the in **normal mode**, which means that the **rotary switch showed be in position 0**, before restoring the XP-8000-CE6 to factory default settings.

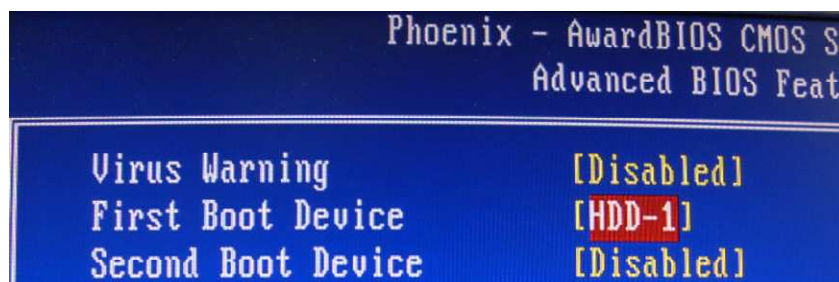
Step 1: Reboot the XP-8000-CE6. While rebooting, press the “Delete” key to enter the BIOS setup utility

Step 2: Choose “Advanced BIOS Features” and then press the “Enter” key

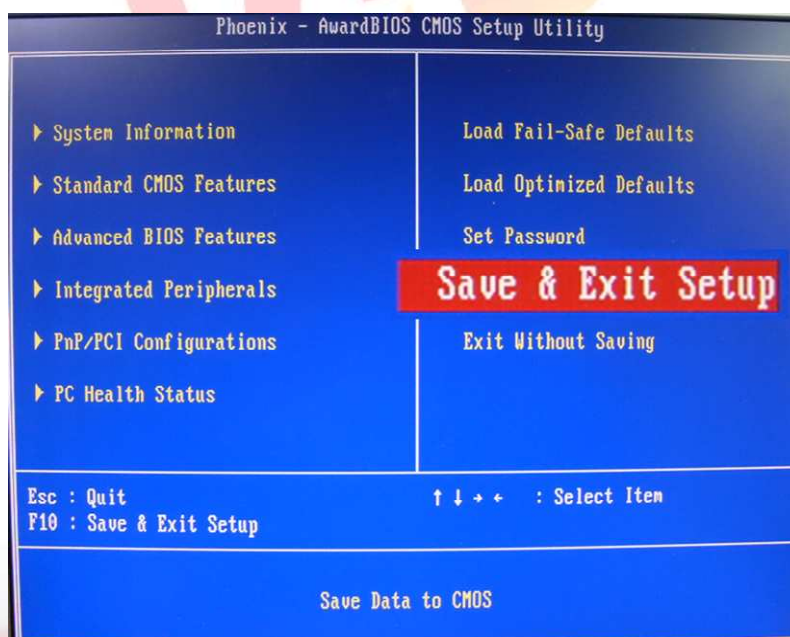


Classification	Update software FAQ on XPAC				No.	4-01-01	
Author	Weikai	Version	1.0.2	Date	2012/6/25	Page	4/9

Step 3: Set the "First Boot Device" option to "HDD-1", HDD-1 denotes the Compact Flash



Step 4: Select Save and Exit Setup then press the "Enter" key or press "F10".



Classification	Update software FAQ on XPAC				No.	4-01-01	
Author	Weikai	Version	1.0.2	Date	2012/6/25	Page	5/9

Step 5: After restarting the device, the boot sequence will launch the XP-8000-CE6 Rescue Utility, as shown below Type either (a) or (1) and then press "Enter" create the XP-8000-CE6 default partition.

```

=====
==                               ==
                               Main Menu                               ==
=====

**  the following 3 steps help you  **
**  restore default XPAC_CE OS.    **

(a) Step 1: create XPAC_CE default partition.
(b) Step 2: format and restore XPAC_CE to factory default OS.
(c) Step 3: reboot

(i) Display directory information on built-in flash

Please enter your choice:

```

Step 6: Wait for several seconds for the default partition to be created and then reboot. After the device has choose either (b) or (2) to Format and restore the XP-8000-CE6 to the factory default OS. (Refer to the above figure)

Step 7: After finishing the recovery, press choose either (c) or (3) to reboot the device. (Refer to the above figure)

Step 8: Repeat steps 1 ~ 4 to set the "First Boot Device" to "HDD-0". HDD-0 denotes the Built-in flash, Then reboot the XP-8000-CE6.

Step 9: The XP-8000-CE6 will reset itself to the default setting during the first reboot after the recovery procedure. This process will take about one minute. After completing the above steps, the XP-8000-CE6 recovery process is finished.

Classification	Update software FAQ on XPAC				No.	4-01-01	
Author	Weikai	Version	1.0.2	Date	2012/6/25	Page	6/9

Restoring the Rescue Disk

This section describes how to restore the rescue disk showed the rescue disk crash or be accidentally formatted.

Requirements: Before attempting to restore the Rescue Disk, you should obtain a copy of Symantec Norton Ghost 11 or later, which is available by contacting Symantec (<http://www.symantec.com>).

ICPDAS supplies a ghost file, "Rescue_Disk.gho", which can be used to restore the Rescue Disk if it has crashed, become corrupted, or has been inadvertently formatted.

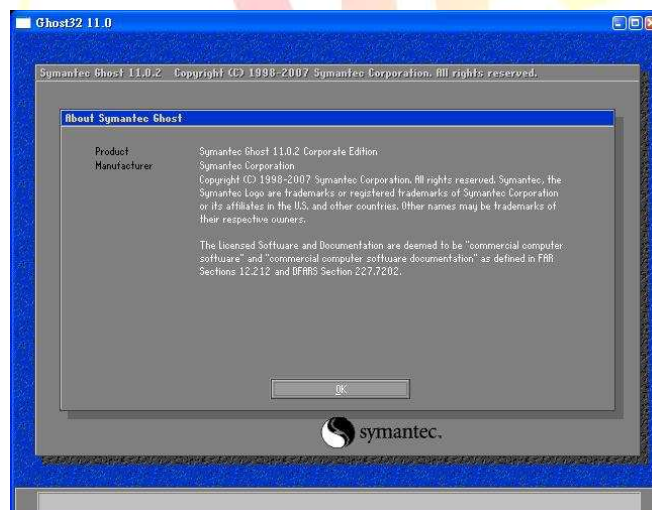
The ghost file can be obtained from:

CD root\ICPDAS\XP-8000-CE6\Rescue_Disk (on the companion CD)

Note: The example below uses "Symantec Norton Ghost32 V.11" ("Symantec Norton Ghost V.11" or above is recommend) as a demonstration of how to restore the Rescue Disk.

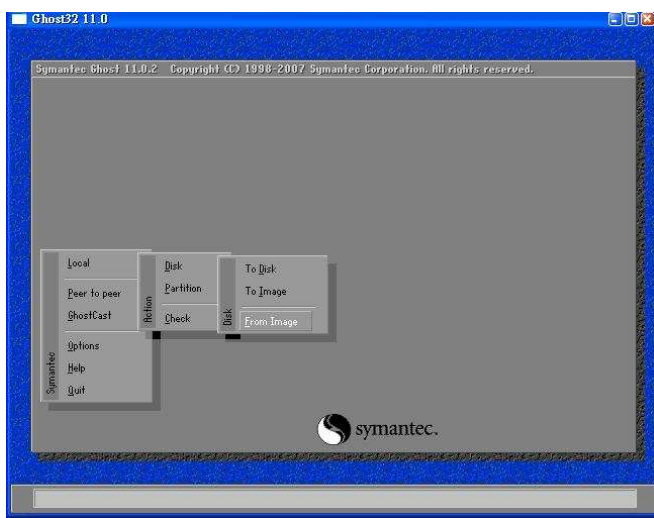
Follow the below steps to recover the Rescue Disk.

1. Open the "Symantec Norton Ghost32 V.11" software and click the "OK" button.

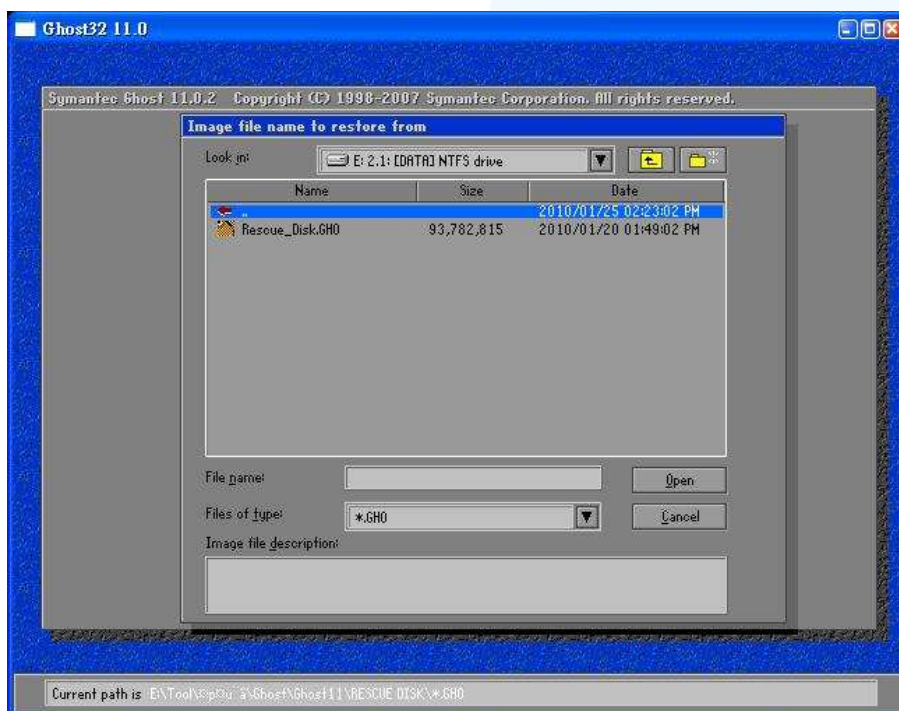


Classification	Update software FAQ on XPAC				No.	4-01-01	
Author	Weikai	Version	1.0.2	Date	2012/6/25	Page	7/9

2. Select "Local→Disk→From Image" from the function menu.

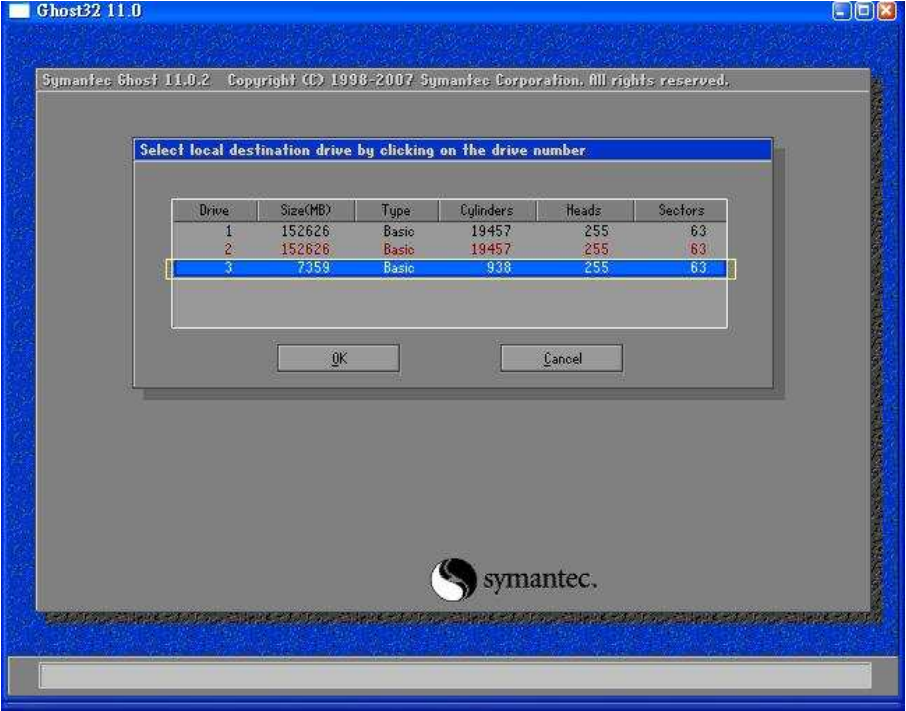


3. Select the Image file to be restored by browsing to the location of the "Rescue_Disk.gho" file and then select the image name and click the "Open" button.

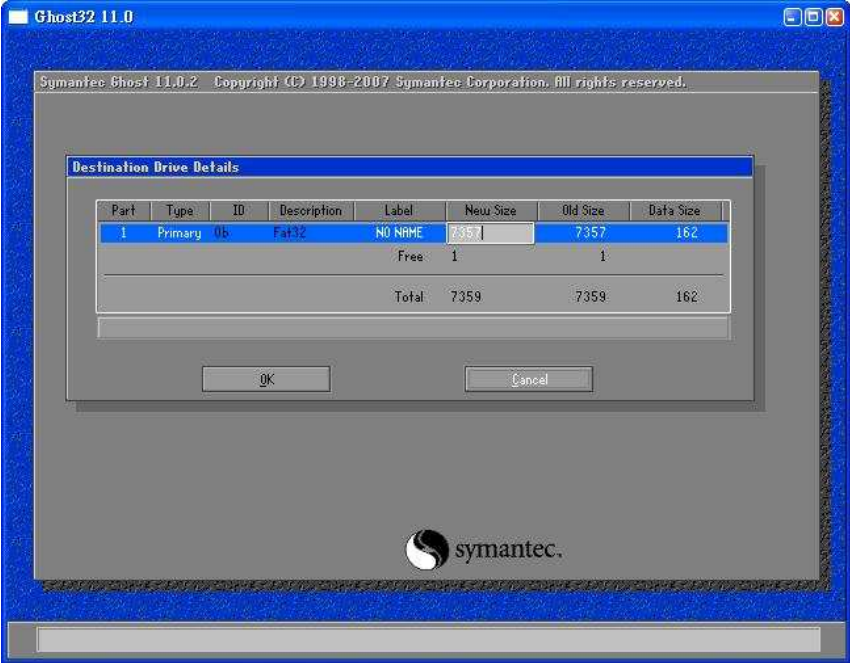


Classification	Update software FAQ on XPAC				No.	4-01-01	
Author	Weikai	Version	1.0.2	Date	2012/6/25	Page	8/9

- Select the load destination drive by clicking on the drive number for the CF card, and then click the "OK" button.

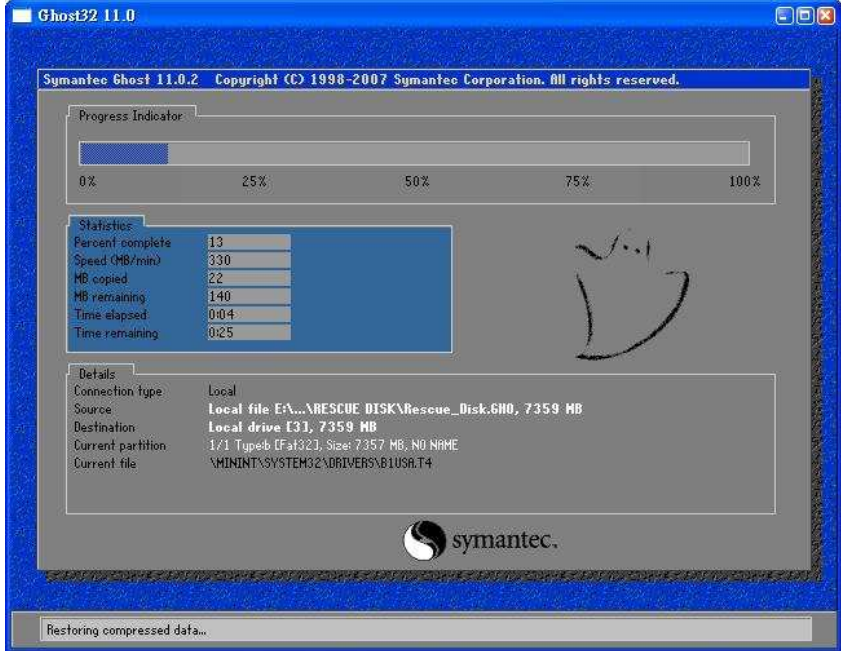


- Restore the "Rescue_Disk.gho" file onto the CF card and then click the "OK" button.



Classification	Update software FAQ on XPAC				No.	4-01-01	
Author	Weikai	Version	1.0.2	Date	2012/6/25	Page	9/9

- 6. A progress indicator will be displayed to indicate the status of the restoration process.



- 7. Once the progress indicator reaches 100%, the restoration of your rescue disk is complete