

Classification	System and Application FAQ on XPAC				No.	2-016-00	
Author	WeiKai	Version	1.0.0	Date	2011/3/21	Page	1/4

## How to use a remote desktop tool (cerhost)

Applies to:

<i>Platform</i>	<i>OS version</i>	<i>XPAC utility version</i>
<i>XPAC series</i>	<i>All versions (WinCE6)</i>	<i>All versions</i>

The cerdisp provided by Microsoft is used to help the user to manage your WinCE device for any location. No matter where you are, the cerdisp provides a convenient environment on your Desktop PC that allows you to remotely control your XPAC.



Classification	System and Application FAQ on XPAC				No.	2-016-00	
Author	WeiKai	Version	1.0.0	Date	2011/3/21	Page	2/4

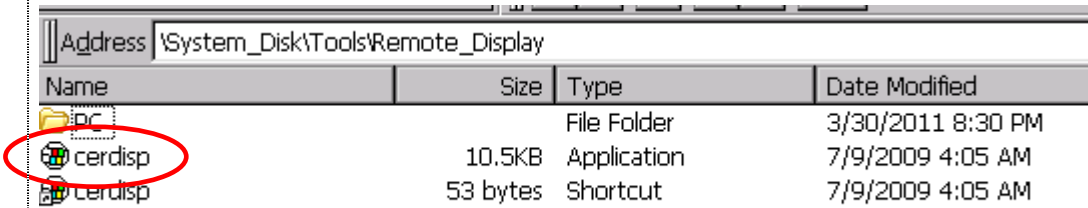
## Executing the cerdisp

(The XPAC and the PC are connected using DHCP or a static IP via the **LAN network**)

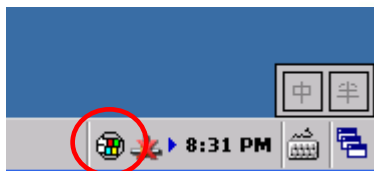
To use the cerdisp, perform the following steps:

### From the XPAC Side

**Step 1:** Double click cerdisp.exe from the “\System\_disk\Tools\Remote\_Display” folder



If the cerdisp.exe is working, it is showing icon in taskbar.



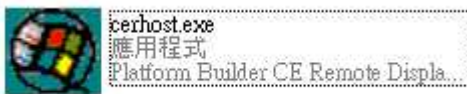
### From the PC Side

**Step 2:** Download the cerhost to your host PC.

The “cerhost.exe” file is located at

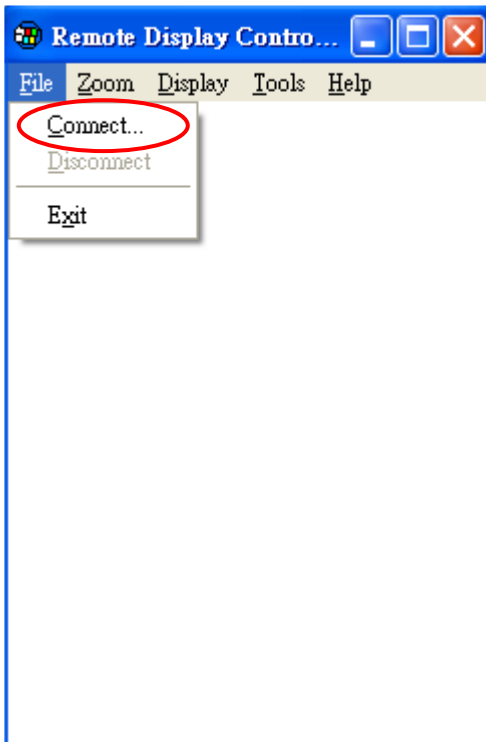
1. [CD:\pc\\_tools\Remote\\_Display\](CD:\pc_tools\Remote_Display)
2. [ftp://ftp.icpdas.com/pub/cd/xp-8000-ce6/pc\\_tools/remote\\_display/](ftp://ftp.icpdas.com/pub/cd/xp-8000-ce6/pc_tools/remote_display/) (XP-8000-CE6)
- [ftp://ftp.icpdas.com/pub/cd/xpac-atom-ce6/pc\\_tools/remote\\_display/](ftp://ftp.icpdas.com/pub/cd/xpac-atom-ce6/pc_tools/remote_display/) (XP-8000-Atom-CE6)

**Step 3:** Run the cerhost.exe

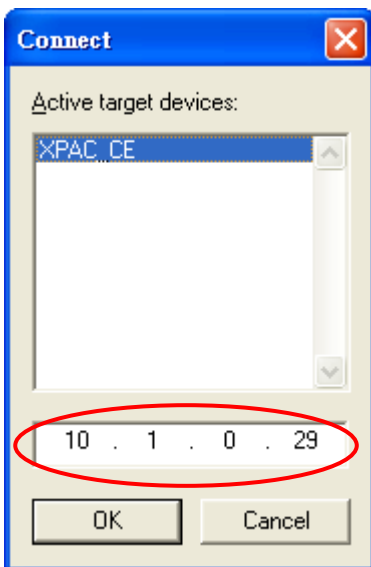


**Step 4:** Click the “File->Connect”

Classification	System and Application FAQ on XPAC				No.	2-016-00	
Author	WeiKai	Version	1.0.0	Date	2011/3/21	Page	3/4



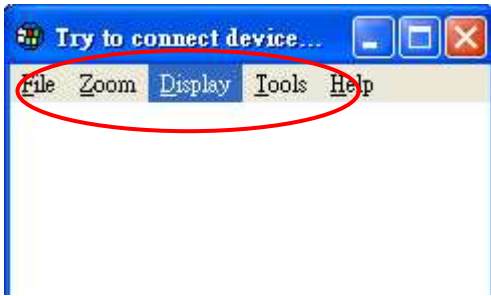
**Step 5:** it is searching XPAC and cost some time. If it is found a device will showing below picture. Please check IP address is your XPAC IP.



5.1. Click the “OK” button.

**Step 6:** It is connecting device and cost some time.

Classification	System and Application FAQ on XPAC				No.	2-016-00	
Author	WeiKai	Version	1.0.0	Date	2011/3/21	Page	4/4



**Step 7:** If connect success. It will showing below picture.

