

Classification	System and Application FAQ on XPAC				No.	2-014-00	
Author	WeiKai	Version	1.0.0	Date	2011/03/22	Page	1/4

How to configure an authoritative time server in Windows Server

Applies to:

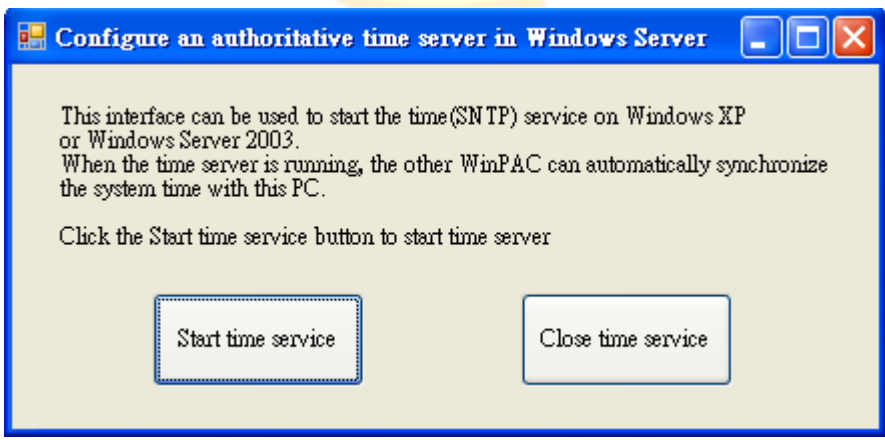
<i>Platform</i>	<i>OS version</i>	<i>XPAC utility version</i>
<i>XPAC series</i>	<i>All versions (WinCE6)</i>	<i>All versions</i>

The system time on the XPAC is not always accurate, so you may need to use an authoritative time server in order to synchronize the system time on XPAC. However, many people rely on the time server in their own network environment for security reasons. However they may not depend on an active internet connection and the availability of an external time server. To overcome this, you can use the Windows system on the PC as an authoritative LAN time server. ICPDAS now provides a program that allows you to control the Windows XP or Windows 2000 time server settings, so that you can synchronize the system time on WinPAC with the LAN time server.

To configure an authoritative time server in Windows XP or Windows 2000, perform the following steps:

From the PC Side

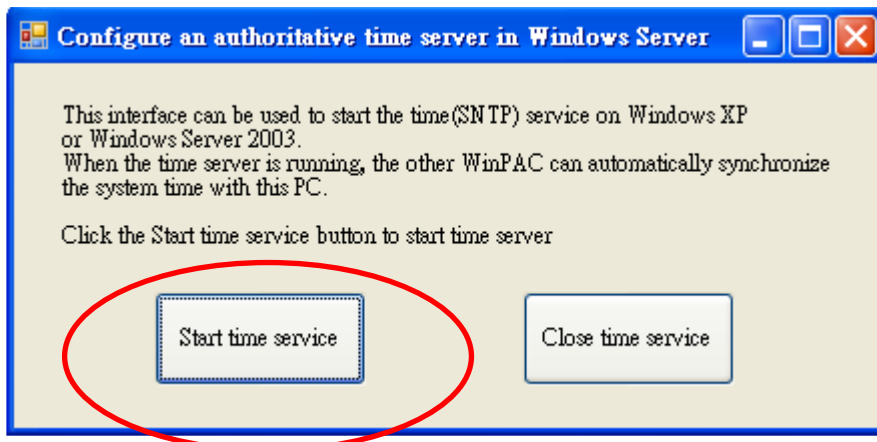
Step 1: Execute the `SNTP_server_interface.exe` program to set the time server on the PC. (The `SNTP_server_interface.exe` program is located at `CD:\napdos\wp-8x4x_ce50\PC_Tools\SNTP_server_interface`)



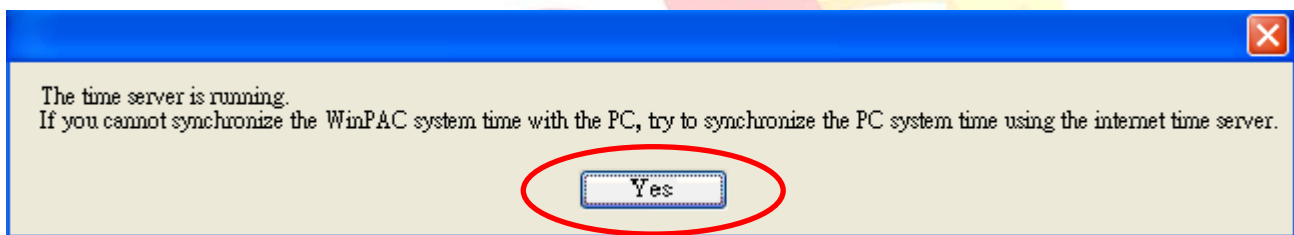
Step 2: Click the “Start time service” button to start the time server. (If you want to close the time

Classification	System and Application FAQ on XPAC				No.	2-014-00	
Author	WeiKai	Version	1.0.0	Date	2011/03/22	Page	2/4

service, click the “Close time service” button)



Step 3: After starting the time service, you will see the following message box. (click the “Yes” button to continue.)



Tips & Warnings

-  Before you synchronize the XPAC system time with the LAN time server, make sure the XPAC and LAN time server can be connected to each other.

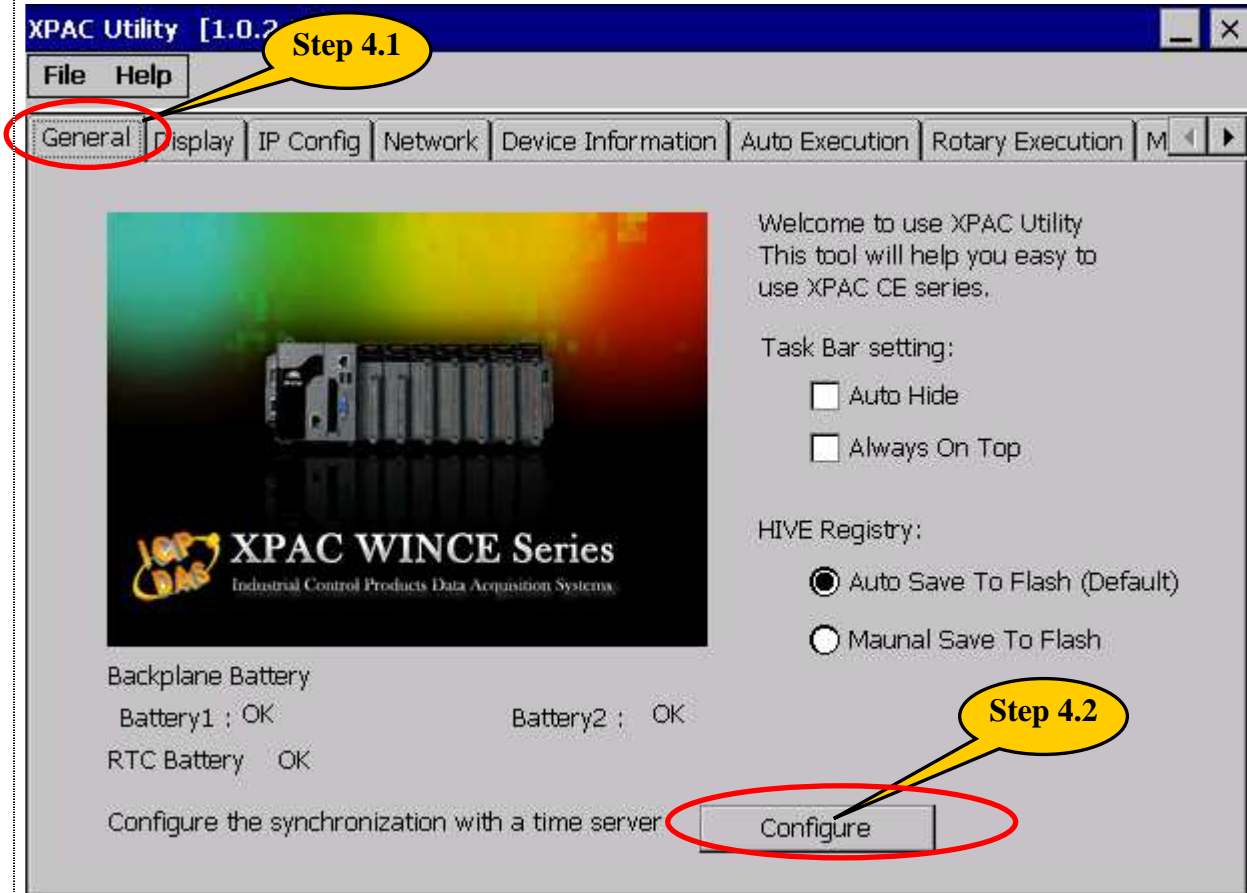
Classification	System and Application FAQ on XPAC				No.	2-014-00	
Author	WeiKai	Version	1.0.0	Date	2011/03/22	Page	3/4

From the XPAC Side

Step 4: Synchronize the XPAC system time with the LAN time server.

Step 4.1: Execute the XPAC utility on the desktop and click the “General” page.

Step 4.2: Click the “Configure” button.

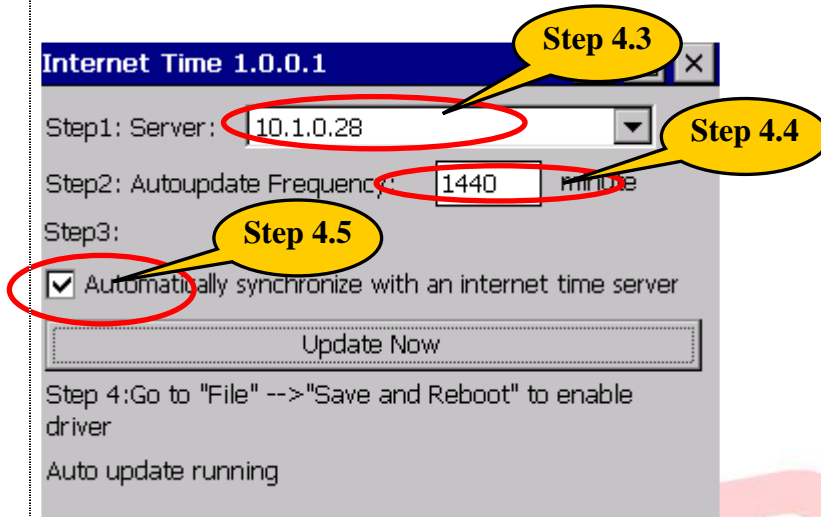


Classification	System and Application FAQ on XPAC				No.	2-014-00	
Author	WeiKai	Version	1.0.0	Date	2011/03/22	Page	4/4

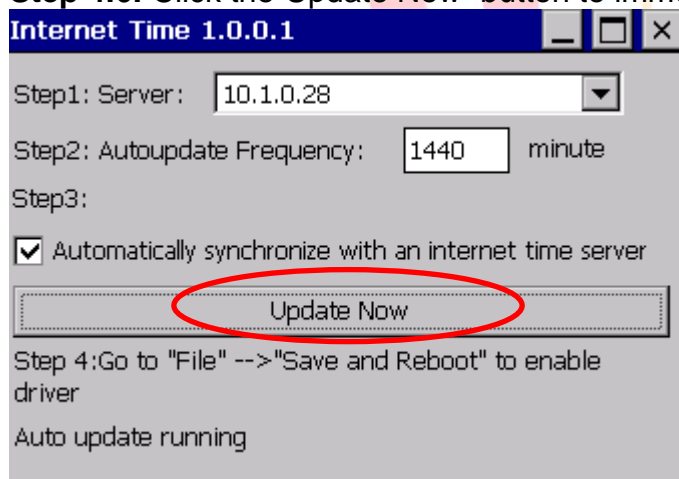
Step 4.3: Enter the IP address for the LAN time server.

Step 4.4: Enter a value for the Synchronization frequency.

Step 4.5: Check the "Automatically synchronize with an internet time server" check box.



Step 4.6: Click the "Update Now" button to immediately update the system time.



Step 4.7: Reboot your XPAC.

Step 4.8: After rebooting, the service for automatically synchronizing with the internet time server will execute and update the system time after connecting to the internet.