

Classification	System and Application FAQ on XPAC					No.	2-002-02
Author	Cid	Version	1.0.0	Date	2011/5/4	Page	1/9

## How to use Windows Mobile Device Center (ActiveSync) through Serial port on win7/vista?

Applied to:

Platform	OS version	XPAC utility version
XPAC series	All versions (WinCE6)	All versions

ActiveSync helps you to synchronize the files on your host PC with the XPAC.

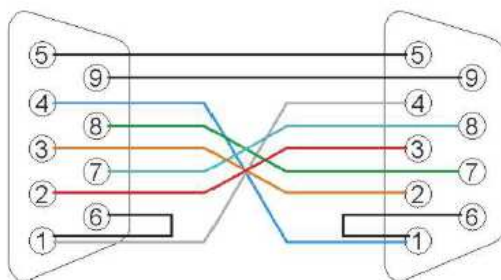
Here the steps of using ActiveSync to communicate with XPAC through COM port are subdivided into three parts:

1. Configuration on XPAC (page 2)
2. Execution ActiveSync on PC (page 6)
3. File Synchronization Example (page 8)

## Tips & Warnings



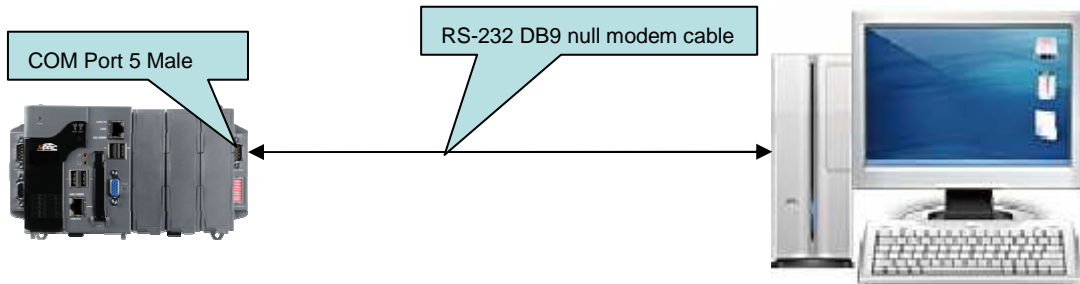
You need a 9-pin null-modem cable to connect the XPAC to PC. The wire tip of the null modem cable is as below:



On the XP-8000, only **COM5** allows the ActiveSync communication request from the PC via the serial port.

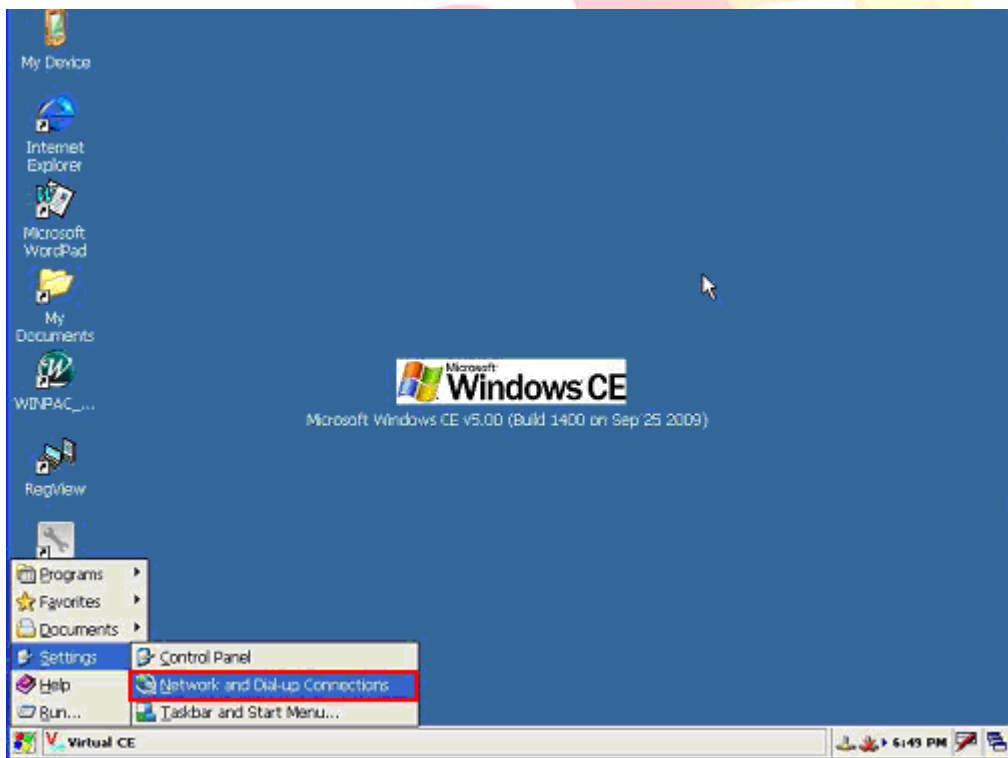
Classification	System and Application FAQ on XPAC					No.	2-002-02
Author	Cid	Version	1.0.0	Date	2011/5/4	Page	2/9

XP-8x4x



## 1. Configuration on XPAC

Step1. Click Start → Settings → **Network and Dial-up Connections**.

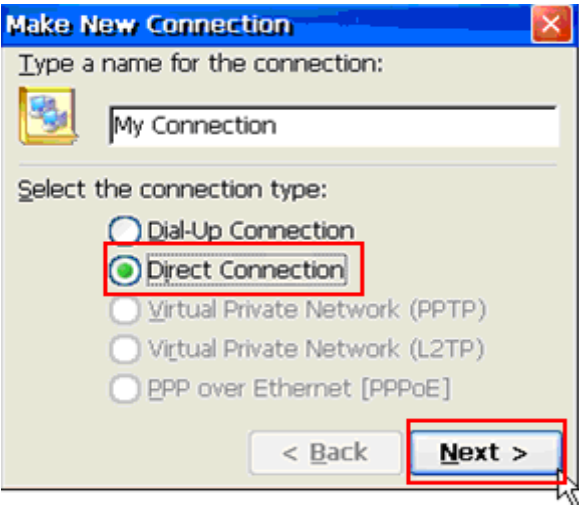


Step2. Double Click the “Make New Connection” icon.

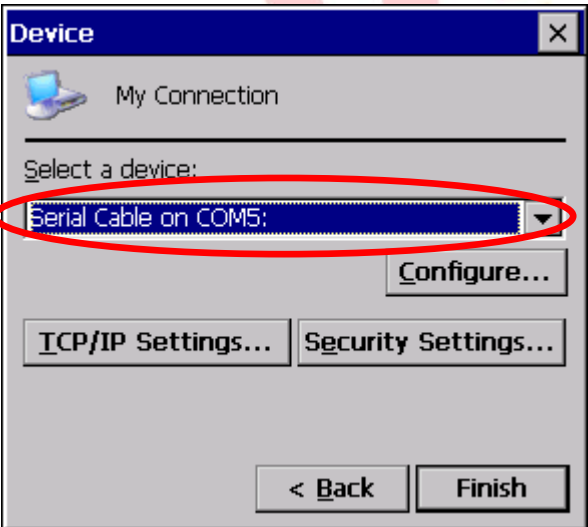


Classification	System and Application FAQ on XPAC				No.	2-002-02	
Author	Cid	Version	1.0.0	Date	2011/5/4	Page	3/9

Step3. Select the "Direct Connection" radio button and then click the "Next" button.

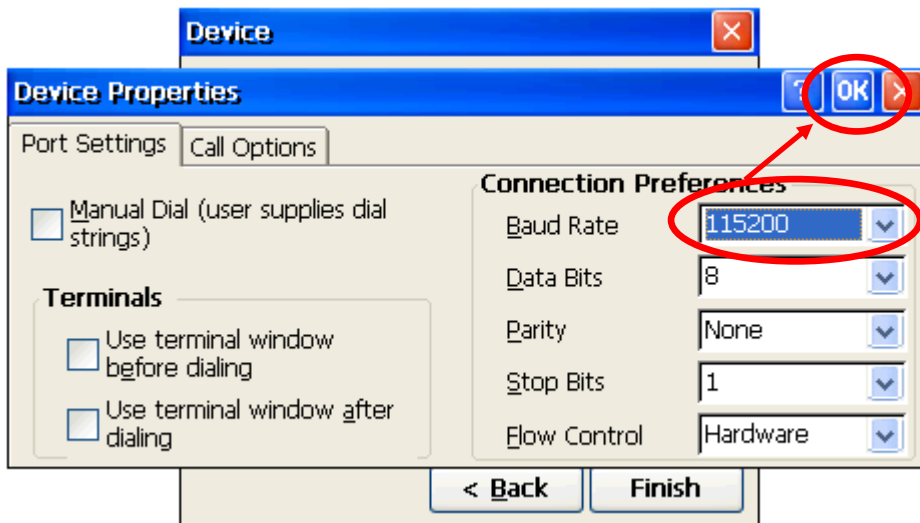
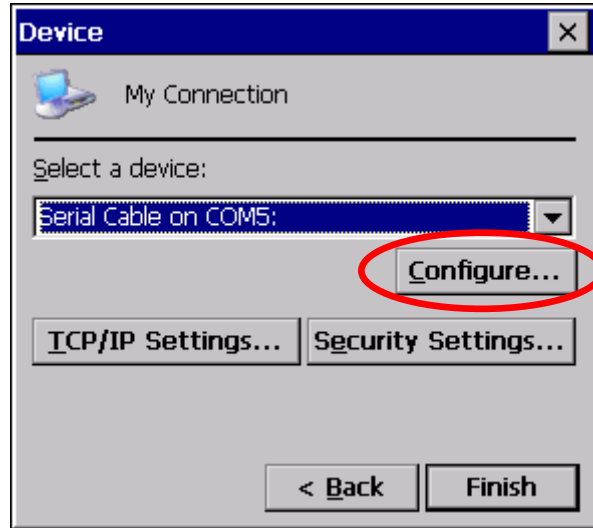


Step4. Choose COM5 (for XPAC) from the "Select a device" ComboBox.



Classification	System and Application FAQ on XPAC				No.	2-002-02	
Author	Cid	Version	1.0.0	Date	2011/5/4	Page	4/9

Step5. Click the “Configure” button, select the appropriate Baud Rate and click the “OK” button.



## Tips & Warnings



The Baud Rate range for different ActiveSync versions is:

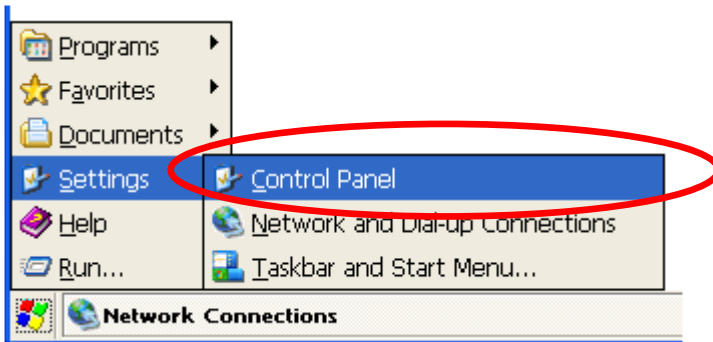
For ActiveSync **version 3.7 or 3.7.1**, 19200bps or 57600bps can be selected.

For ActiveSync **version 3.8 or 4.5**, 19200bps, 38400bps, 57600bps or 115200bps can be selected.

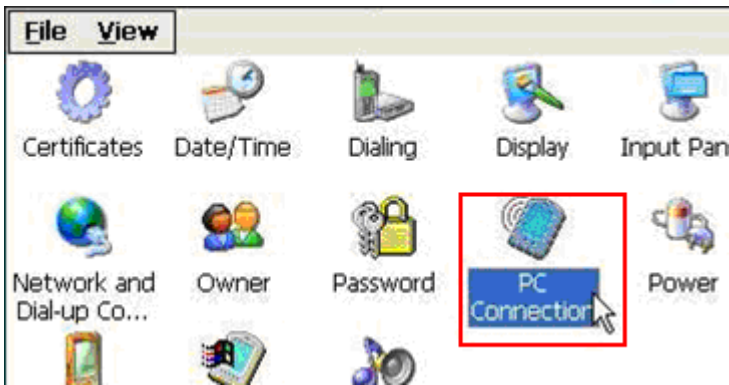
The ActiveSync program on the PC side does not need to set Baud Rate.

Classification	System and Application FAQ on XPAC				No.	2-002-02	
Author	Cid	Version	1.0.0	Date	2011/5/4	Page	5/9

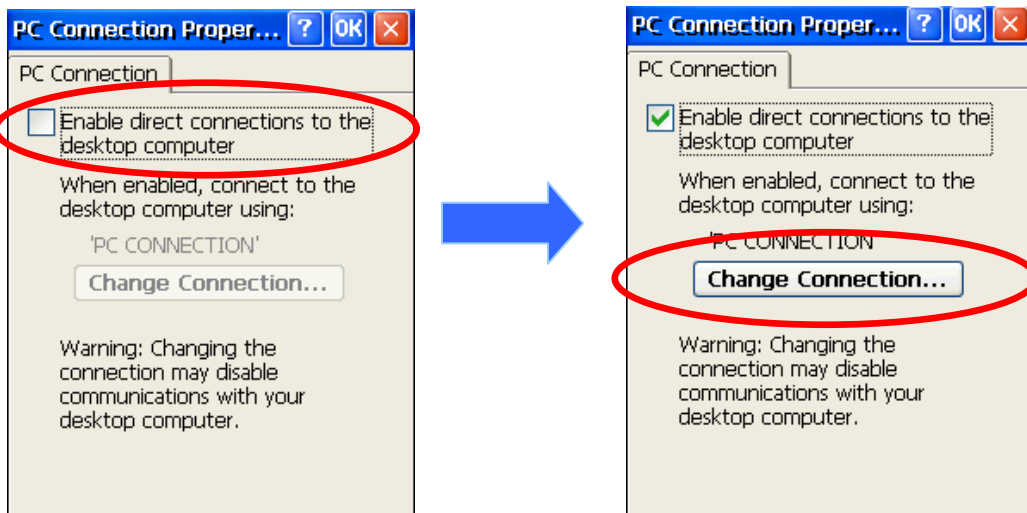
Step6. Click Start → Settings → Control Panel.



Step7. Click the “PC connection” icon.

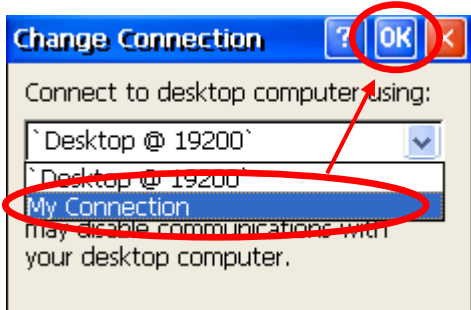


Step8. Check the “Enable direct connections to the desktop computer” checkbox and Click the “Change Connection” button.

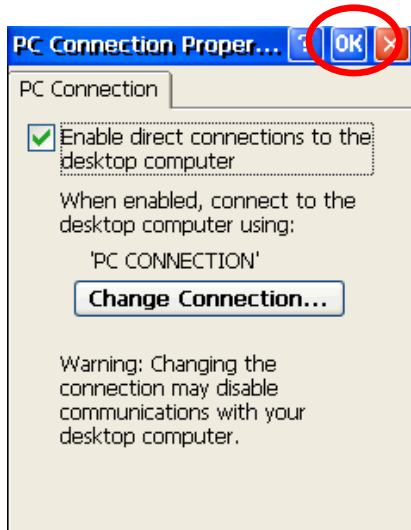


Classification	System and Application FAQ on XPAC				No.	2-002-02	
Author	Cid	Version	1.0.0	Date	2011/5/4	Page	6/9

Step9. Change to a new connection by selecting “My Connection” from the ComboBox, and then click the “OK” button.



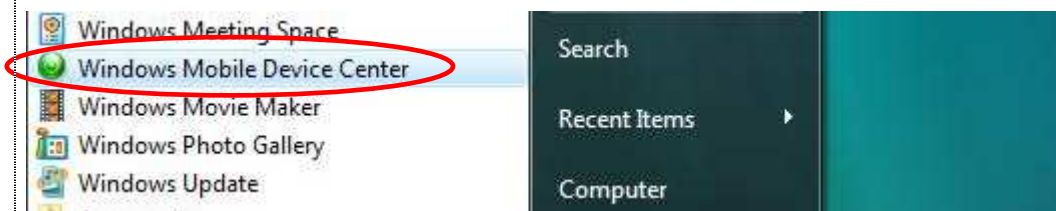
Step10. Click the “OK” button.



## 2. Execution ActiveSync on PC.

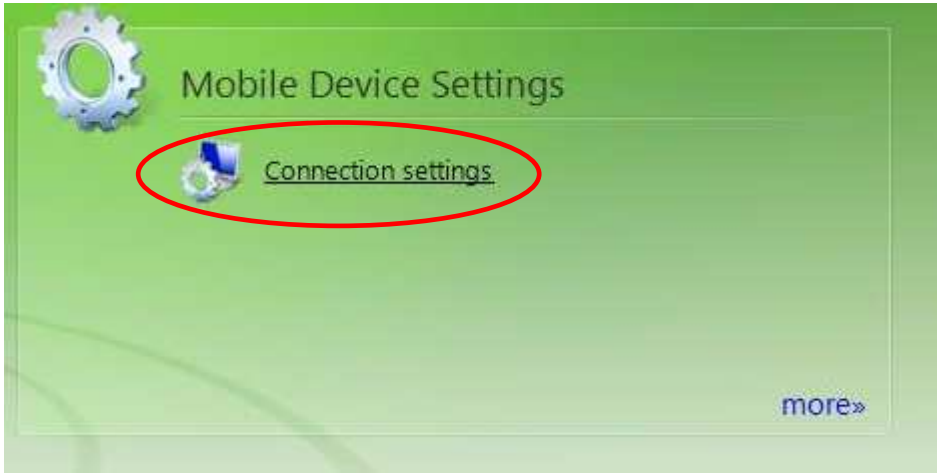
2.1. Install Microsoft **Windows Mobile Device Center 6.1** software on PC

2.2. Run **Windows Mobile Device Center**

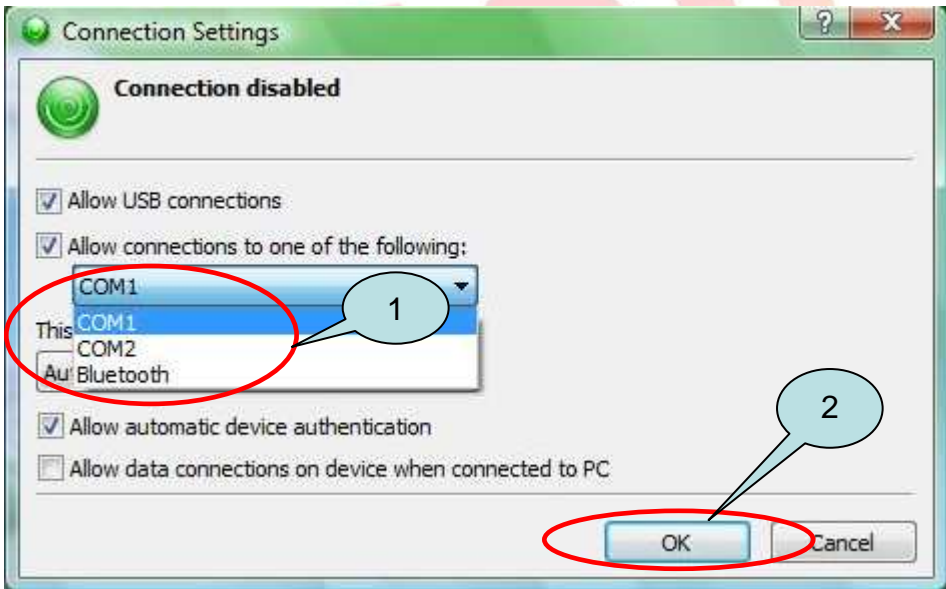


Classification	System and Application FAQ on XPAC				No.	2-002-02	
Author	Cid	Version	1.0.0	Date	2011/5/4	Page	7/9

2.3. Check "Connections settings".



2.4. Click the COM1 of the ComboBox and click the "OK" button.



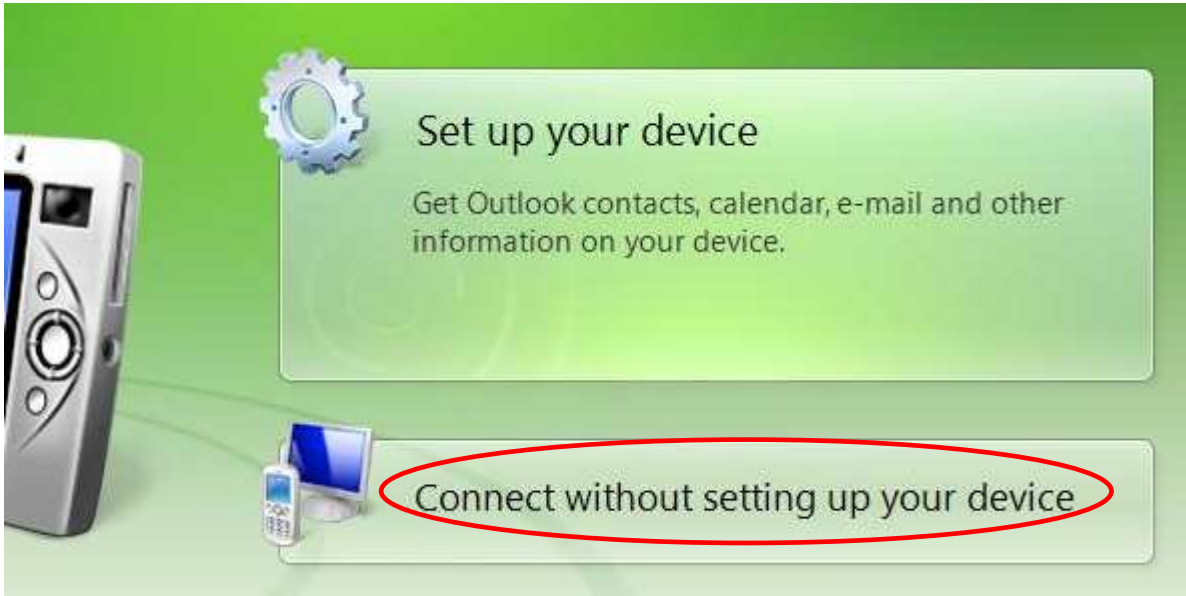
2.5. Click the "continue" button



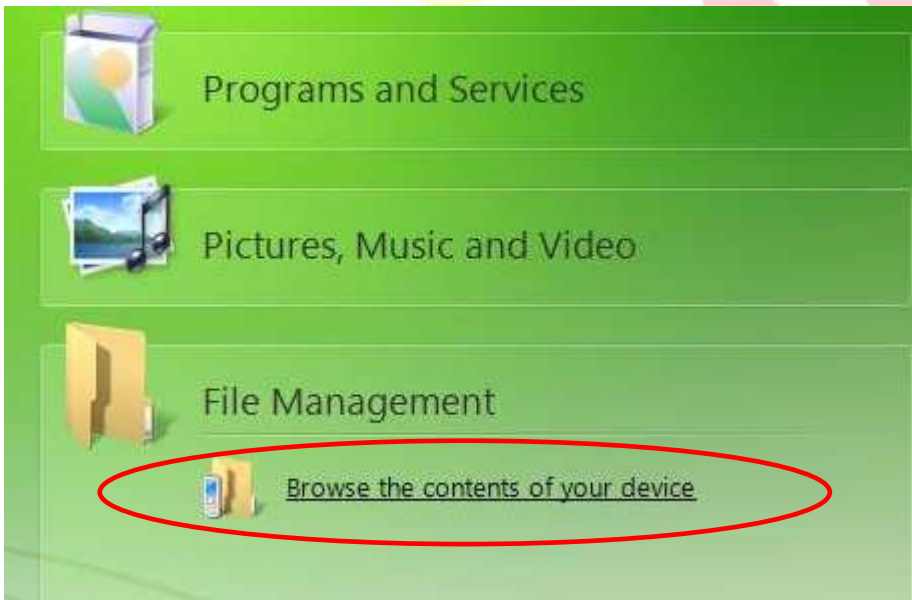
Classification	System and Application FAQ on XPAC				No.	2-002-02	
Author	Cid	Version	1.0.0	Date	2011/5/4	Page	8/9

### 3. File Synchronization Example

1. Click the "Connect without setting up your device" button.



2. Click the "Browse the contents of your device" menu option.





Classification	System and Application FAQ on XPAC				No.	2-002-02	
Author	Cid	Version	1.0.0	Date	2011/5/4	Page	9/9

3. Copy the file to the target folder on the devices.

