

Classification	System and Application FAQ on XPAC				No.	1-004-01	
Author	WeiKai	Version	1.0.1	Date	2010/6/29	Page	1/6

## How to set up an Egalax USB touch panel

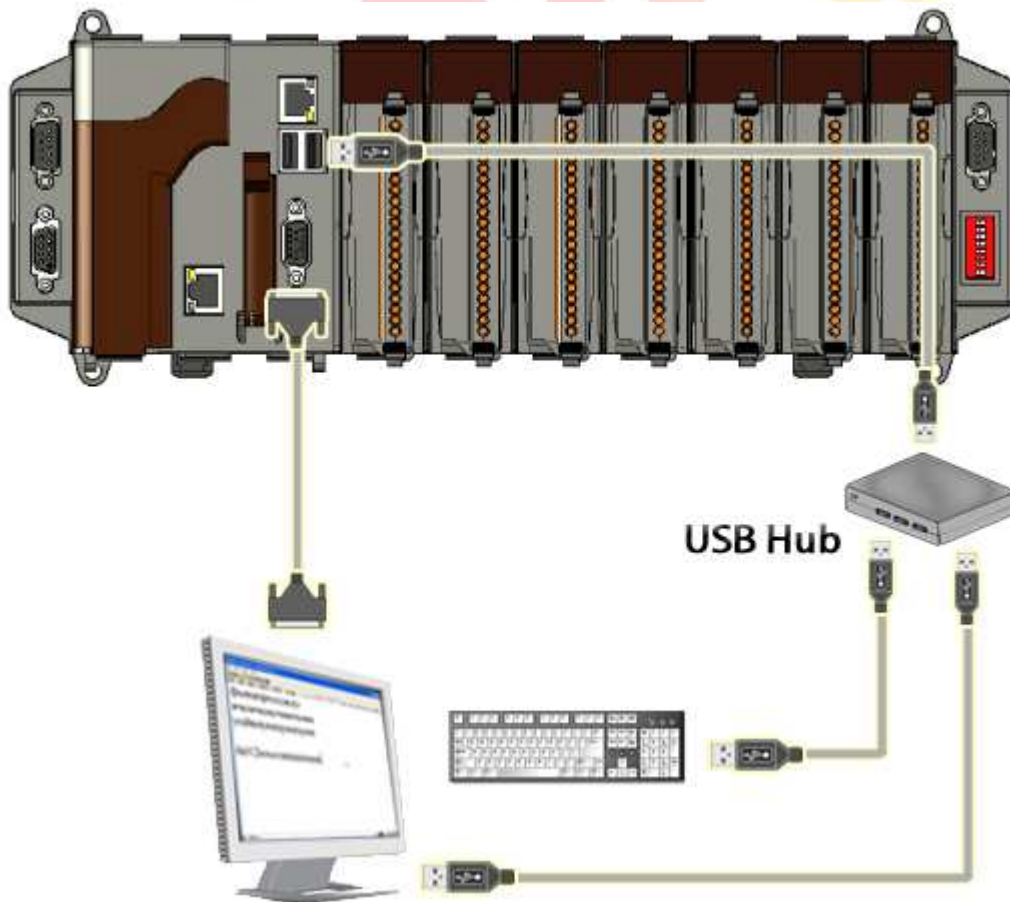
*Applies to:*

<i>Platform</i>	<i>OS version</i>	<i>XPAC utility version</i>
<i>XPAC series</i>	<i>All versions (WinCE6)</i>	<i>All versions</i>

*N/A: Not applicable to this platform and OS.*

### Use a touch panel and a keyboard at the same time on XP-8x4x.

The XP-8x4x series only has two USB ports, so if you want use a touch panel and keyboard/mouse at the same time. You will need a USB hub.



Classification	System and Application FAQ on XPAC				No.	1-004-01	
Author	WeiKai	Version	1.0.1	Date	2010/6/29	Page	2/6

To use an Egalax USB touch panel, perform the following steps:

**Step 1: Location** of the devices for the touch panel

The Egalax\_USB\_TOUCH\_V3.1.3.1727\_YYYYMMDD\_XPAC\_CE6.CAB file is located at (YYYYMMDD means Year /Month/ Day)

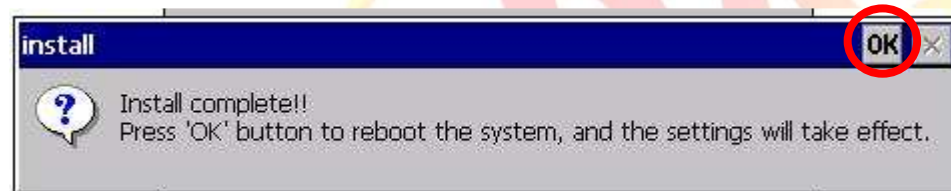
1. CD:\System\_Disk\External\_device\_driver\
2. [ftp://ftp.icpdas.com/pub/cd/xp-8000-ce6/system\\_disk/external\\_device\\_driver/](ftp://ftp.icpdas.com/pub/cd/xp-8000-ce6/system_disk/external_device_driver/) (XP-8000-CE6)  
[ftp://ftp.icpdas.com/pub/cd/xpac-atom-ce6/system\\_disk/external\\_device\\_driver/](ftp://ftp.icpdas.com/pub/cd/xpac-atom-ce6/system_disk/external_device_driver/) (XP-8000-Atom-CE6)

**Step 2: Install** the Egalax\_USB\_TOUCH\_V3.1.3.1727\_YYYYMMDD\_XPAC\_CE6.CAB file.

2.1. Double click the Egalax\_USB\_TOUCH\_V3.1.3.1727\_YYYYMMDD\_XPAC\_CE6.CAB file, and then click "OK".



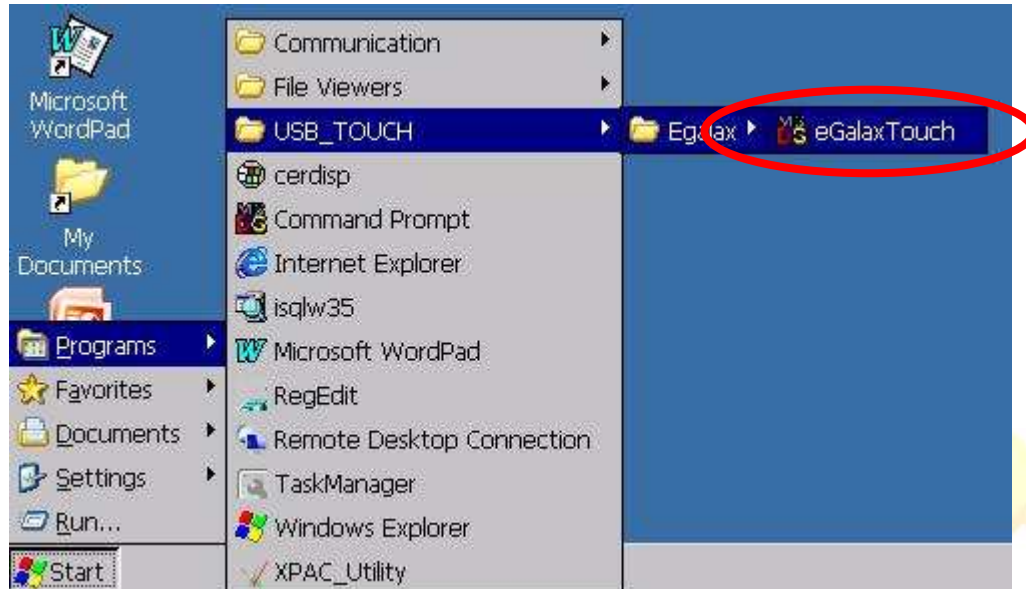
2.2 Double click ok, and will reboot your XPAC.



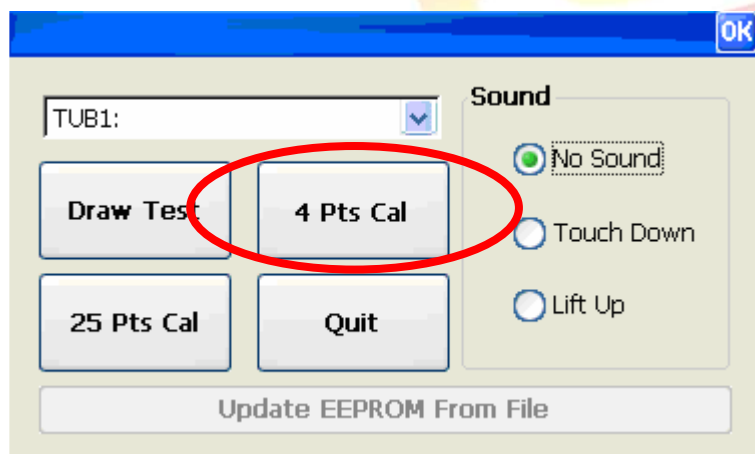
Classification	System and Application FAQ on XPAC				No.	1-004-01	
Author	WeiKai	Version	1.0.1	Date	2010/6/29	Page	3/6

**Step 3: Execute** the calibration program.

3.1. Click Start->Programs->USB\_TOUCH->Egalax->eGalaxTouch.bat.



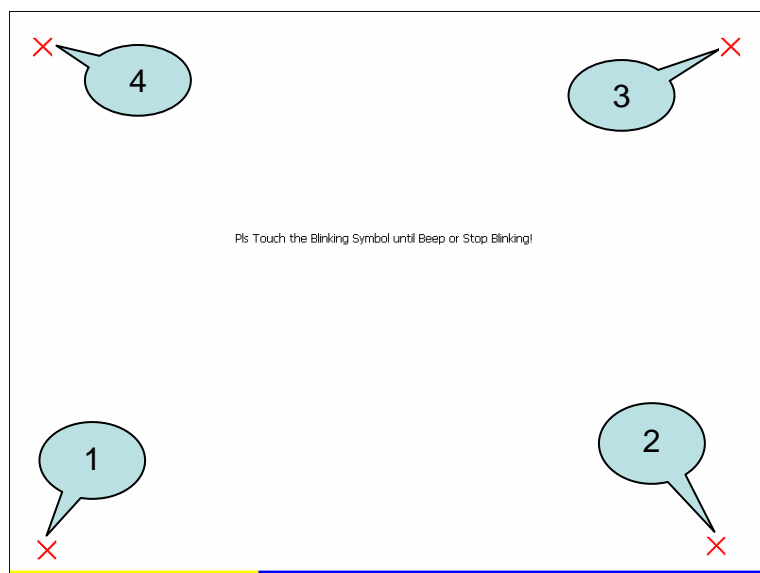
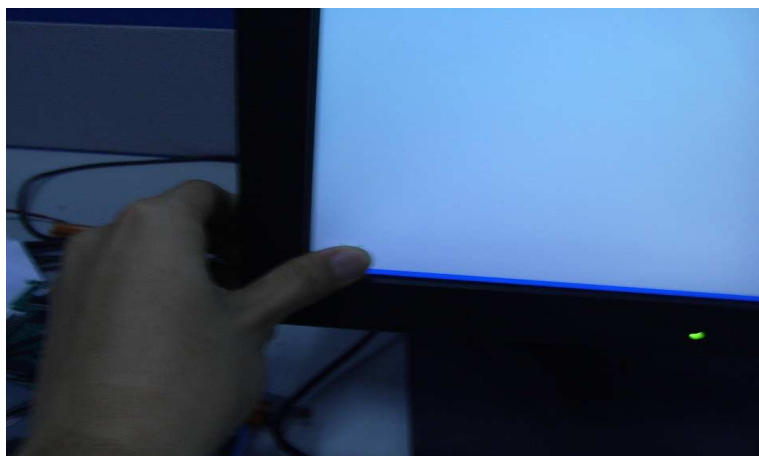
3.2. Click the “4 Pts Cal” button. (Click the “25 Pts Cal” button to obtain a more accurate calibration for the touch panel)



Classification	System and Application FAQ on XPAC				No.	1-004-01	
Author	WeiKai	Version	1.0.1	Date	2010/6/29	Page	4/6

### 3.3. Perform the calibration process.

#### 3.3.1. Touch the "X" icons on the monitor to perform the calibration process.



Classification	System and Application FAQ on XPAC				No.	1-004-01	
Author	WeiKai	Version	1.0.1	Date	2010/6/29	Page	5/6

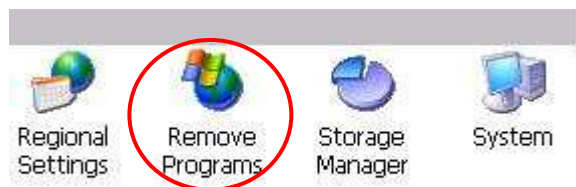
Uninstall Egalax USB touch driver, and perform the following steps:

**Step 1: Execute** the Remove Program.

1.1 Click the Start->Settings ->Control Panel.

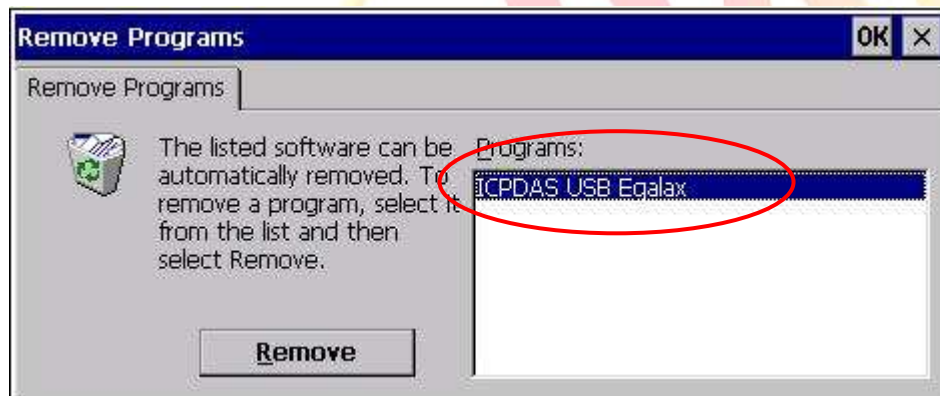


1.2 After Open “Control Panel”, double click “Remove Programs”.

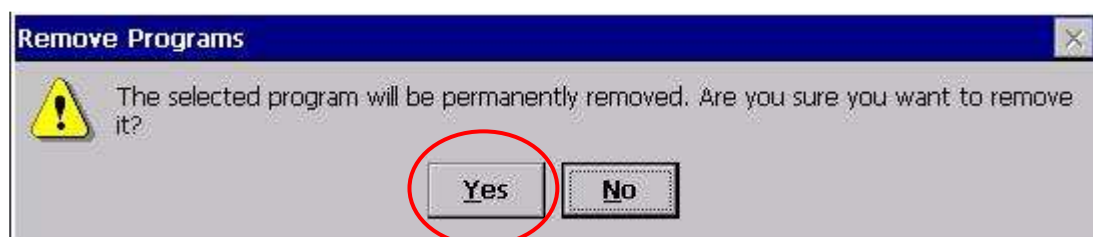


**Step 2: Uninstall** Penmount USB touch driver.

2.1 After execute “Remove Programs”, click “ICPDAS USB Egalax” and then click “Remove” button

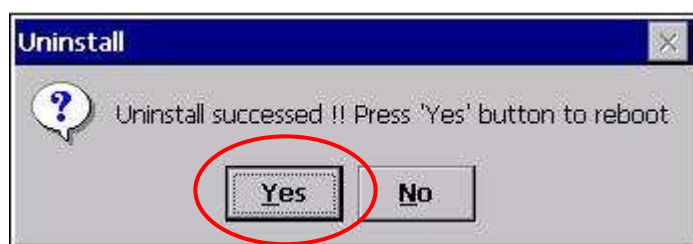


2.2 Click “Yes” button, and will uninstall Egalax USB touch driver.



Classification	System and Application FAQ on XPAC				No.	1-004-01	
Author	WeiKai	Version	1.0.1	Date	2010/6/29	Page	6/6

2.3 Click “Yes”, and will reboot your XAC to take effect.



ICP  
DAS