

XP-8000-Atom-CE6 Quick Start Guide

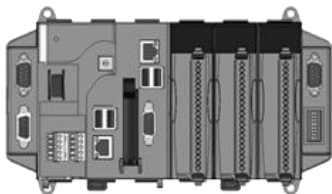
Version 1.0.2, March 2011

Congratulations!

Congratulations on purchasing XP-8000-Atom-CE6 - the most popular automation solution for remote monitoring and control application. This Quick Start Guide will provide information needed to get started with XP-8000-Atom-CE6. Please also consult the User Manual for detailed information on the setup and use of XP-8000-Atom-CE6.

What's In the Box?

In addition to this guide, the package includes the following items:



XP-8000-Atom-CE6 Module

XP-8041-AtomCE6/XP-8141-Atom-CE6
XP-8341-Atom-CE6/XP-8741-Atom-CE6



2 GB CF card



Software Utility CD



Screw Driver

(1C016)
2.4 mm

Technical Support

- **XP-8000-Atom-CE6 User Manual**

CD:\XP-8000-Atom-CE6\Document\

<http://ftp.icpdas.com/pub/cd/xpac/xp-8000-atom-ce6/document/>

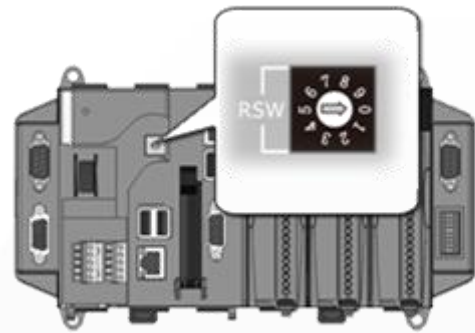
- **XP-8000-Atom-CE6 Website**

http://www.icpdas.com/products/PAC/xpac/selection_guide.htm

1

Configuring the boot mode

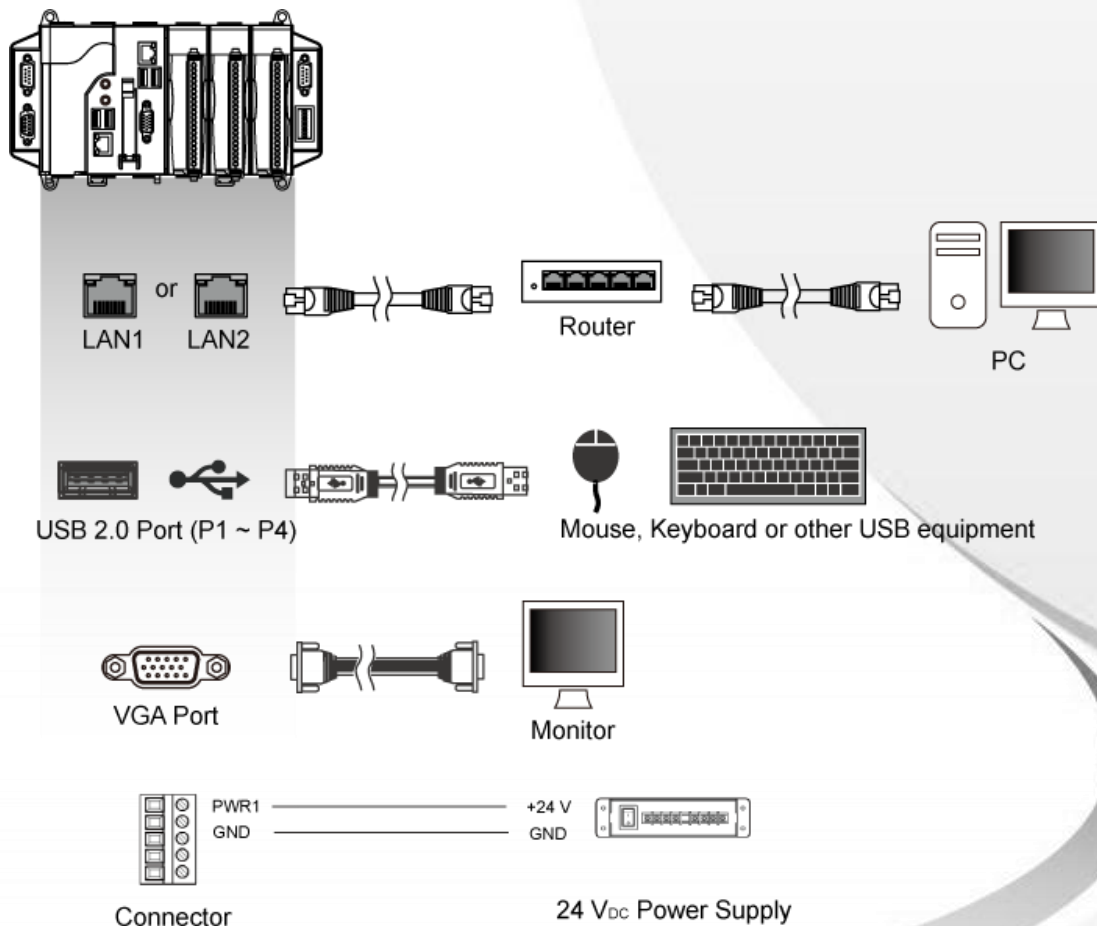
Before starting any installation, be sure that the switch is placed in the "0" position.



2

Connecting to PC, Monitor and Power Supply

- i. Connect PC to the LAN port through a hub.
- ii. Connect the USB mouse and USB keyboard to the USB port.
- iii. Connect the monitor to the VGA port.
- iv. Connect the +24 V_{DC} power supply to PWR1 and GND terminals.



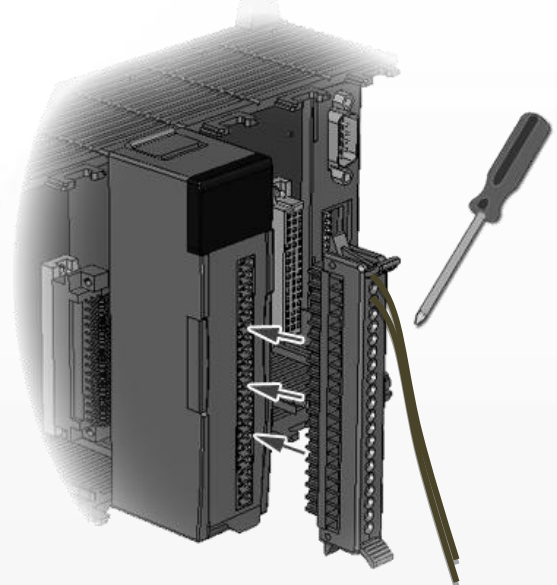
3

Inserting the I/O Modules

Only high profile I-8K and I-87K series modules can be plugged.

For more information about this expansion I/O modules, please refer to

http://www.icpdas.com/products/PAC/xpac/IO_Expansion.htm



4

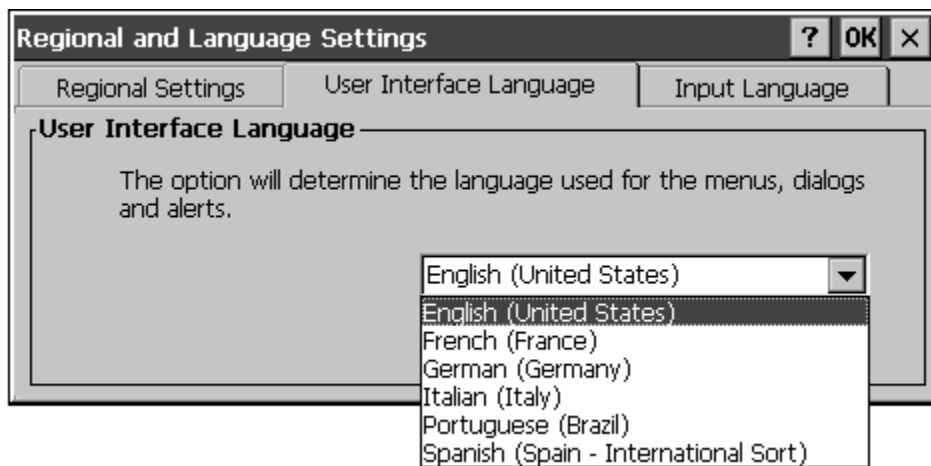
Changing the User Interface Language

The "Regional Settings" is a Windows CE functionality that allows users to easily change the XP-8000-Atom-CE6 user interface with your native language.

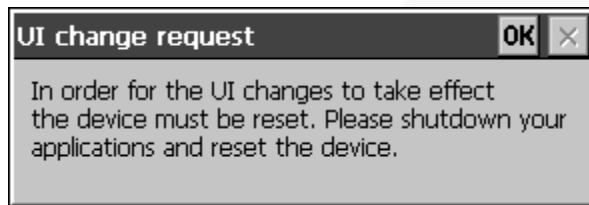
Step 1 Click Start menu, point to Settings, click Control Panel, and then click Regional Options



Step 2 Click User Interface Language tab, choose to your local language, and then click OK



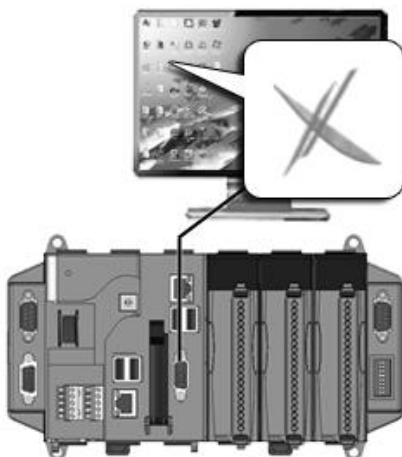
Step 3 Click OK, and then reboot XP-8000-Atom-CE6 for changes to take effect



5

Using XPAC Utility to Configure XP-8000-Atom-CE6 Basic Functionality

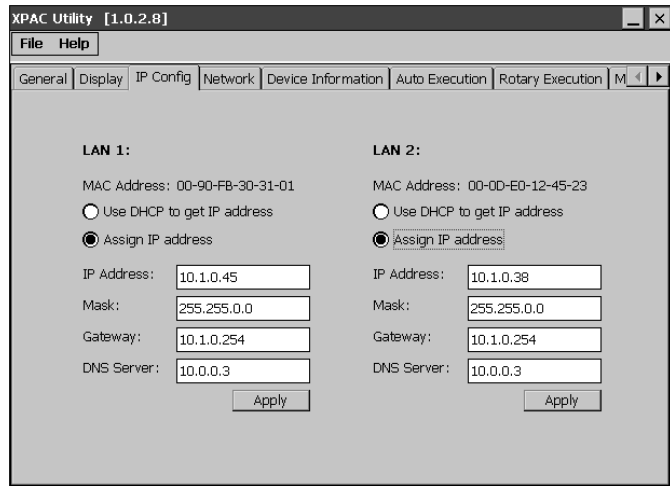
The XPAC Utility is a toolkit used to quickly control and manage the XP-8000-Atom-CE6.



Step 1 Run the XPAC Utility located on desktop



**Step 2 Configure IP(DHCP),
FTP Server, Auto
Execution..., etc**



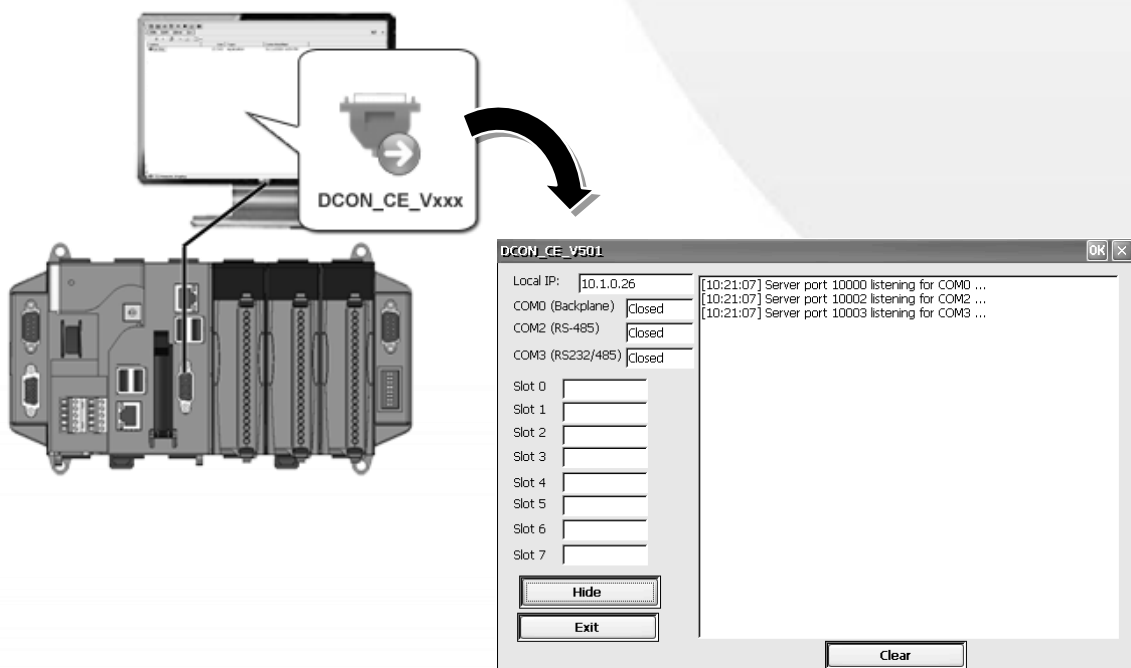
6

Using DCON Utility to Configure the I/O Modules

DCON Utility is a tool kit used to quickly control and manage I-87K series expansion I/O modules.

Step 1 On XP-8000-Atom-CE6 side, click server program, DCON_CE_Vxxx

The DCON_CE_Vxxx are pre-installed on the XP-8000-Atom-CE6, located under \System_Disk\Tools\DCON_CE

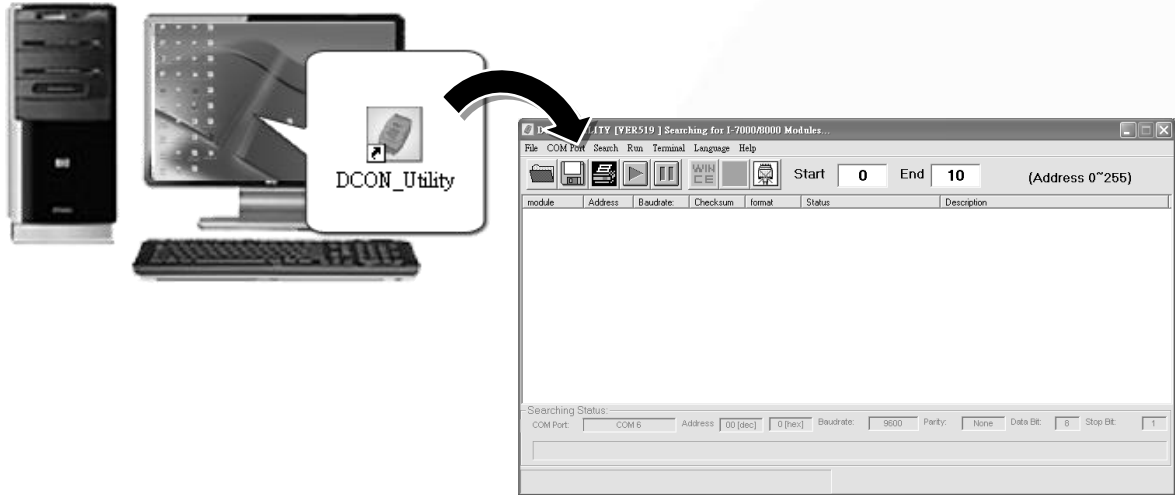


Step 2 On PC side, Run the DCON Utility

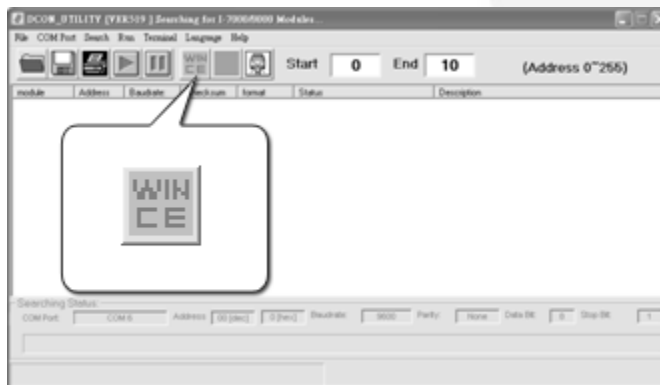
The DCON Utility can be installed from the CD that was provided with the package or by downloading the latest version from ICP DAS web site.

CD:\XP-8000\XP-8000-Atom-CE6\PC_Tools\DCON_Utility\

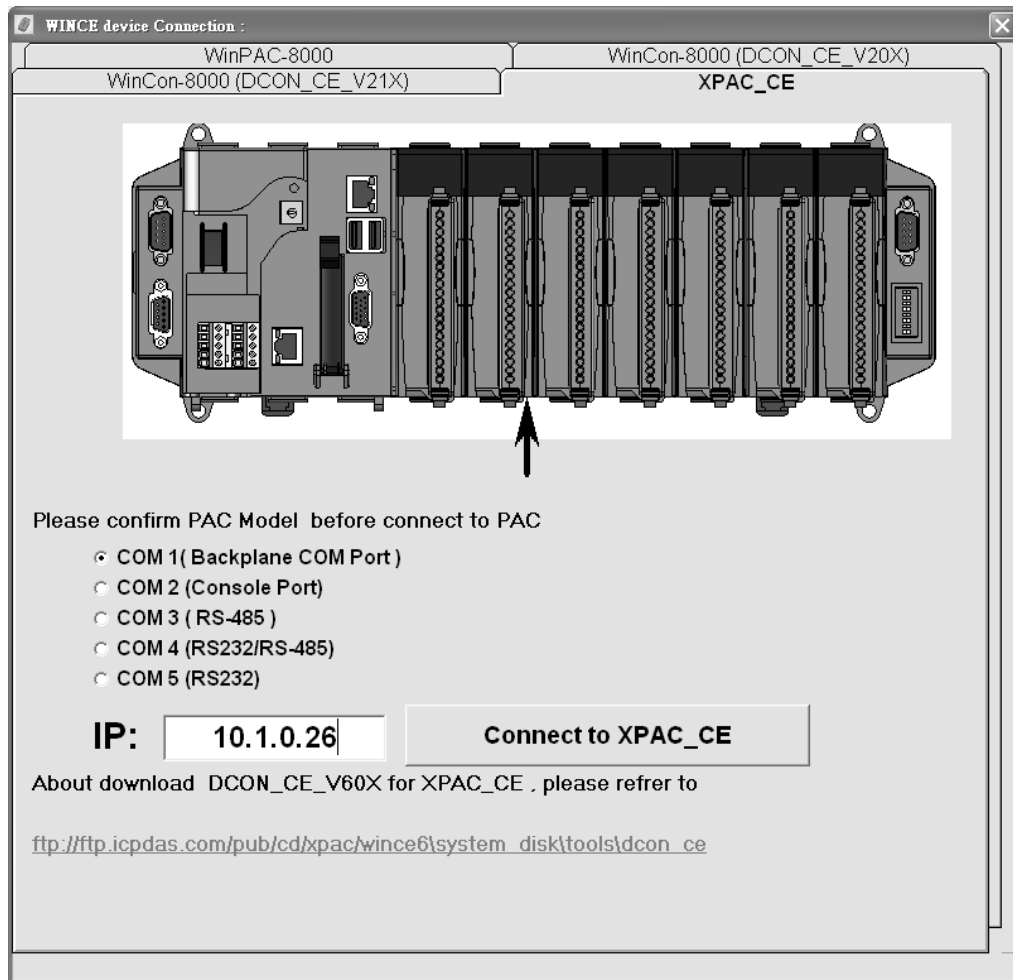
ftp://ftp.icpdas.com/pub/cd/xp-8000-atom-ce6/pc_tools/dcon_utility/



Step 3 Click WINCE common button



Step 4 Click XPAC_CE tab, type the IP address of the XP-8000-Atom-CE6, and then click Connect to XPAC_CE button

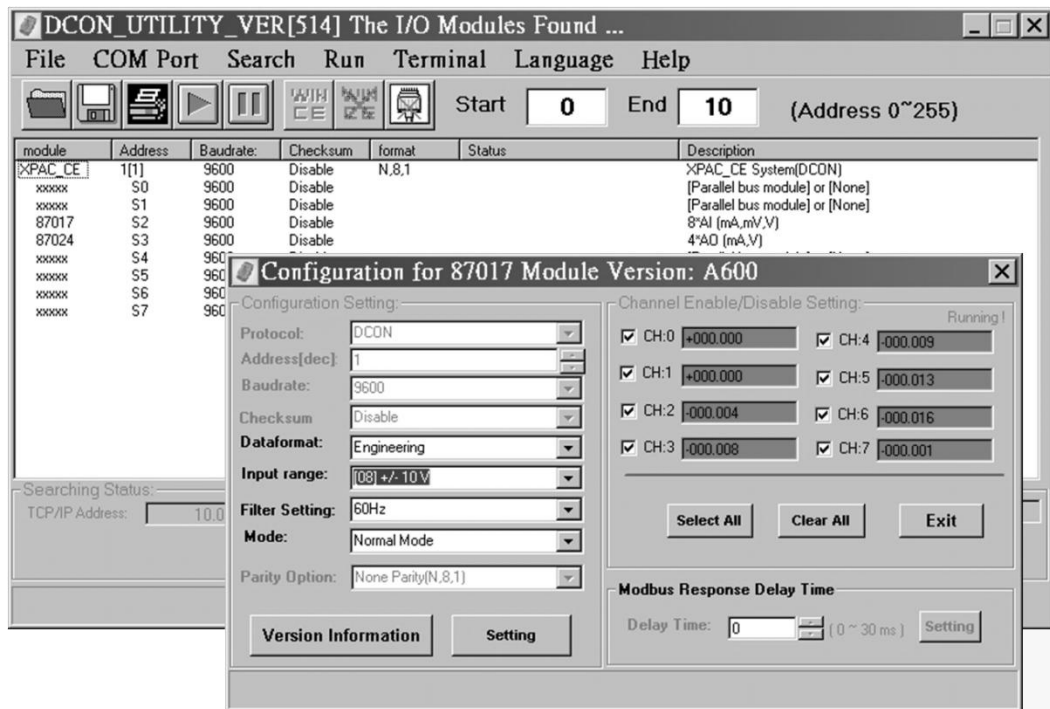


Tips & Warnings



If DCON Utility cannot connect to XP-8000-Atom-CE6, the Ethernet connection between Host PC and XP-8000-Atom-CE6 might be rejected by fire wall, please contact with MIS to open the Ethernet port.

Step 5 Click on the module name from the list to enter the configure form, and then configure the I/O module



Tips & Warnings



If there is no operation within 30 seconds, the connection will automatically close to release the COM port occupied.



Additional Information

After you have finished configuring your module(s), you may start to develop your own applications. For detailed instructions and more applications, please refer to XP-8000-Atom-CE6 User Manual.