

Classification	System and Application FAQ on XPAC				No.	4-01-01	
Author	Sean	Version	1.0.0	Date	2011/2/25	Page	1/8

How to update OS image

Applied to:

<i>Platform</i>	<i>OS version</i>	<i>XPAC utility version</i>
<i>XPAC series</i>	<i>All versions (WinCE6)</i>	<i>All versions</i>

N/A: Not applicable to this platform and OS.

XP-8000-CE6 update is part of the XP-8000-CE6 services to provide additional and more efficient features and functionality for XP-8000-CE6 operating system.

There are two ways to update the XP-8000-CE6:

i. Only update OS image

Each release will contain new features, reliability, application compatibility, security, and more. Before you download any release files, we highly recommend you read the release note, which contains all of this release contents.

Please refer to the documents at ftp://ftp.icpdas.com/pub/cd/xp-8000-ce6/os_image/ for more details.

ii. Reinstall XP-8000-CE6

If you don't like just update OS image, you can reinstall new version XP-8000-CE6 OS in your device.

The XP-8000-CE6 can be reinstalled with the XP-8000-CE6 Rescue Utility. Before reinstalling the XP-8000-CE6, make sure the necessary updating files have been are available on your CF card.

The necessary files can be obtained at:

<ftp://ftp.icpdas.com/pub/cd/xp-8000-ce6/rescue>

Caution:

1. Before reinstall XP-8000-CE6, please check you have backup your data.
2. Ensure your XP-8000-CE6 running on normal mode (rotary switch = 0) during reinstall XP-8000-CE6.

Only update OS image

Please follow the steps below to update OS image only

Step 1: download OS image, NK.bin, form

<ftp://ftp.icpdas.com/pub/cd/xp-8000-ce6/rescue/ce6>

Step 2: Replace old OS image which is located at \System_Disk on XP-8000-CE6 devices with the NEW OS image (download from step 1).

Step 3: After replaced the image and restarted the devise, XP-8000-CE6 has been updated completely.

Reinstall XP-8000-CE6

Warning:

- XP-8000-CE6 has to run under **normal mode**, which means **rotary switch = 0**, to reinstall XP-8000-CE6 to factory default.
- When reinstall XP-8000-CE6, it will not only clear built-in flash (System_Disk), but also restore all files to System_Disk.
- Before reinstall XP-8000-CE6, please check you have backup your data.

Pre-requires for reinstall XP-8000-CE6

Step 1: Download all updating files from

<ftp://ftp.icpdas.com/pub/cd/xp-8000-ce6/rescue>

Step 2: Copy files, which download from Step 1, to root of CF card

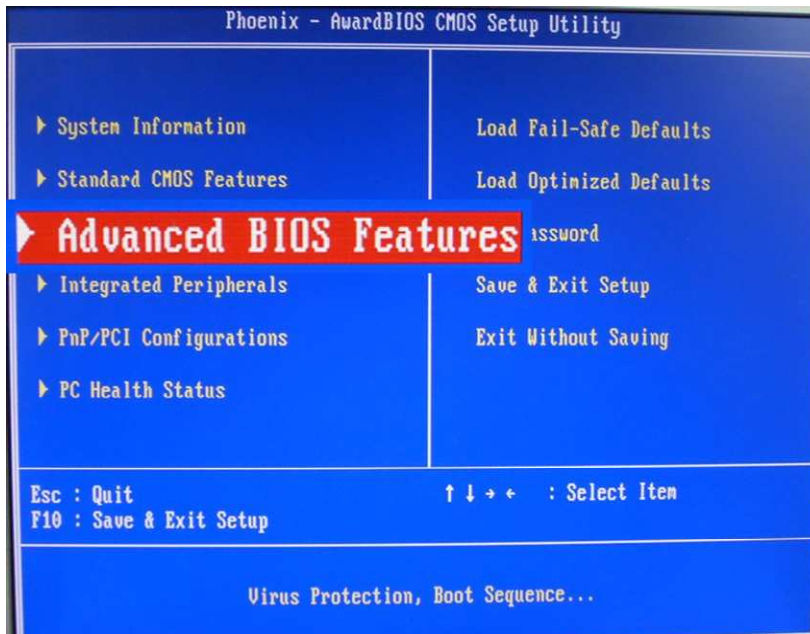
Please follow the steps below to reinstall XP-8000-CE6

Warning: XP-8000-CE6 has to run under **normal mode**, which means **rotary switch = 0**, to rescue XP-8000-CE6 to factory default

Step 1: Reboot your XP-8000-CE6. While rebooting, press “delete” key to enter BIOS setup utility

Classification	System and Application FAQ on XPAC				No.	4-01-01	
Author	Sean	Version	1.0.0	Date	2011/2/25	Page	3/8

Step 2: Choose “Advanced BIOS Features” and then press “Enter” key



Step 5: After restarted the device, will enter into XP-8000-CE6 Recue Utility as following. Choose (a) or (1), create XP-8000-CE6 default partition.

```
=====
==                               ==
                               Main Menu                               ==
=====

**  the following 3 steps help you  **
**  restore default XPAC_CE OS.    **

(a) Step 1: create XPAC_CE default partition.
(b) Step 2: format and restore XPAC_CE to factory default OS.
(c) Step 3: reboot

(i) Display directory information on built-in flash

Please enter your choice:
```

Step 6: Wait about several seconds for step 1 and reboot, then choose (b) or (2), format and restore XP-8000-CE6 to factory default OS. (Refer to above figure)

Step 7: After finishing recovery, choose (c) or (3) to reboot. (Refer to above figure)

Step 8: Repeat step 1 ~ 4 to set "First Boot Device" as "HDD-0", HDD-0 means Built-in flash, and then reboot the XP-8000-CE6.

Step 9: The XP-8000-CE6 will set itself default when the first reboot after recovery procedure. It needs about 1 min. After above steps, the XP-8000-CE6 recovery is completed.

Classification	System and Application FAQ on XPAC				No.	4-01-01	
Author	Sean	Version	1.0.0	Date	2011/2/25	Page	6/8

Restore the Rescue Disk

This section will show you how to restore your rescue disk in case of that the rescue disk crashed or been formatted.

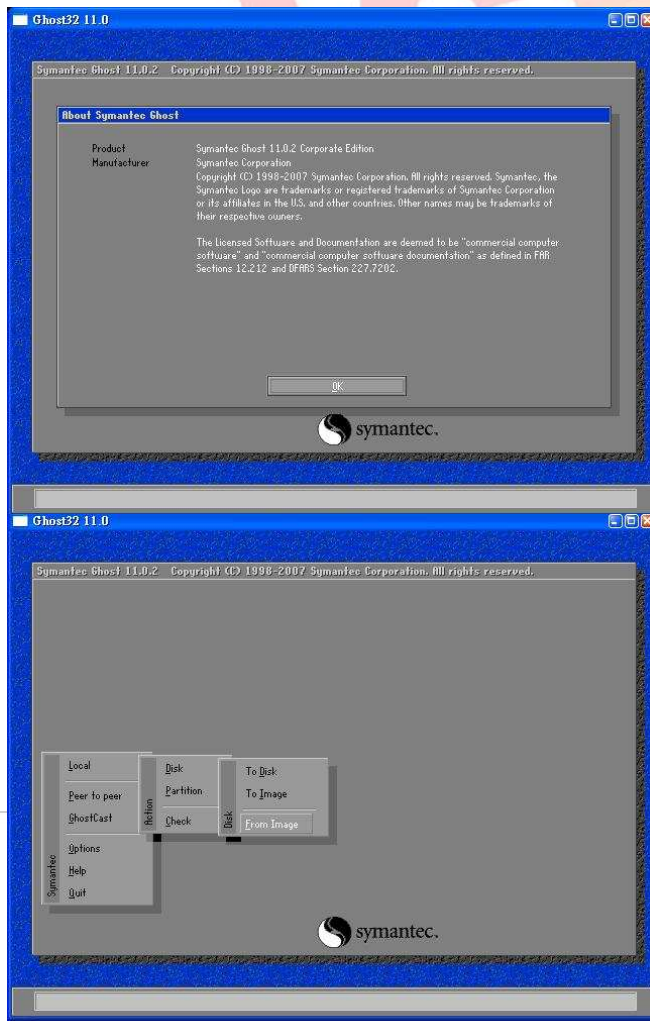
Requirements: For restoring the Rescue Disk, you should prepare Ghost 11 or later, which you could obtain by contacting Symantec (<http://www.symantec.com>)

There is ghost file “Rescue_Disk.gho” can recover Rescue Disk if your Rescue Disk crashed.

The ghost file can be obtained at:
CD root\ICPDAS\XP-8000-CE6\Rescue_Disk (in the companion CD)

Note: Below example is used “Symantec Norton Ghost32 V.11” (The “Symantec Norton Ghost V.11” or above version are recommend) as a demonstration how to do recovery the Rescue Disk.

Please follow below steps to recover Rescue Disk.

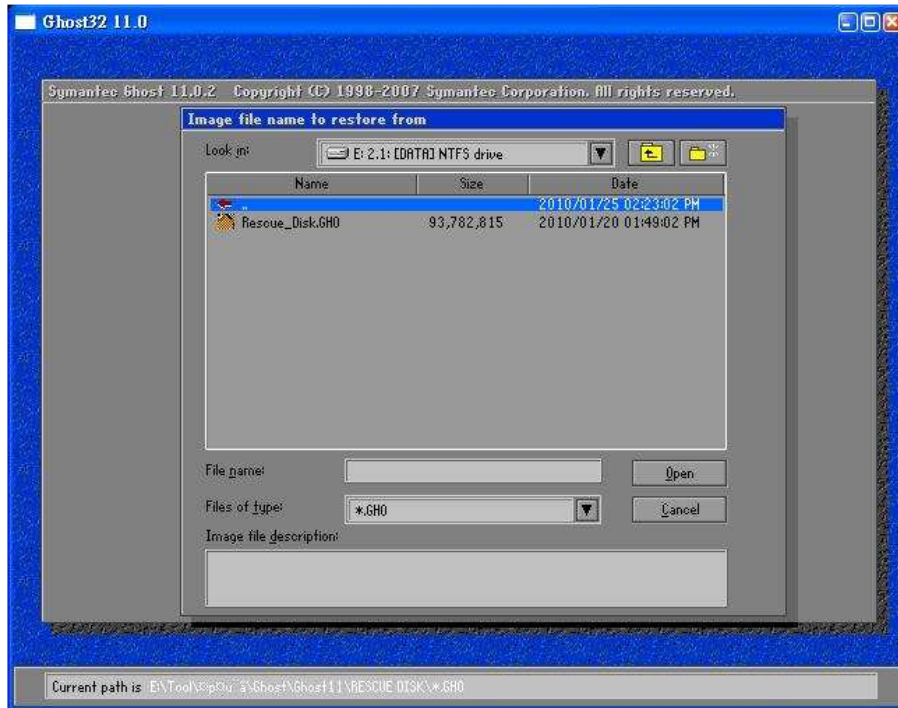


1. Open “Symantec Norton Ghost32 V.11” software and click ‘OK’

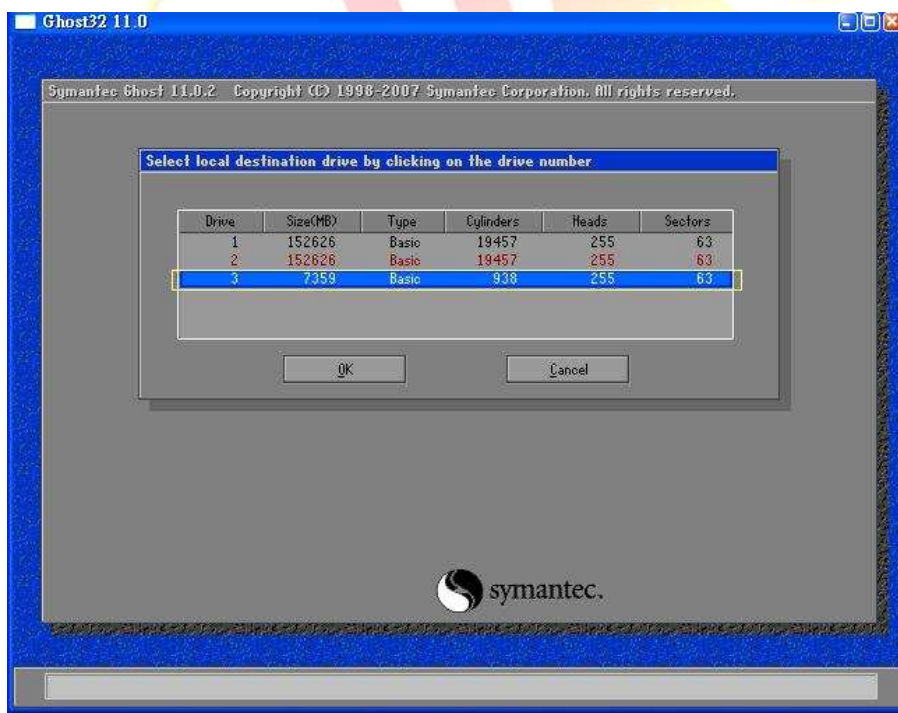
2. Select “Local - Disk - From Image” from function menu

Classification	System and Application FAQ on XPAC				No.	4-01-01	
Author	Sean	Version	1.0.0	Date	2011/2/25	Page	7/8

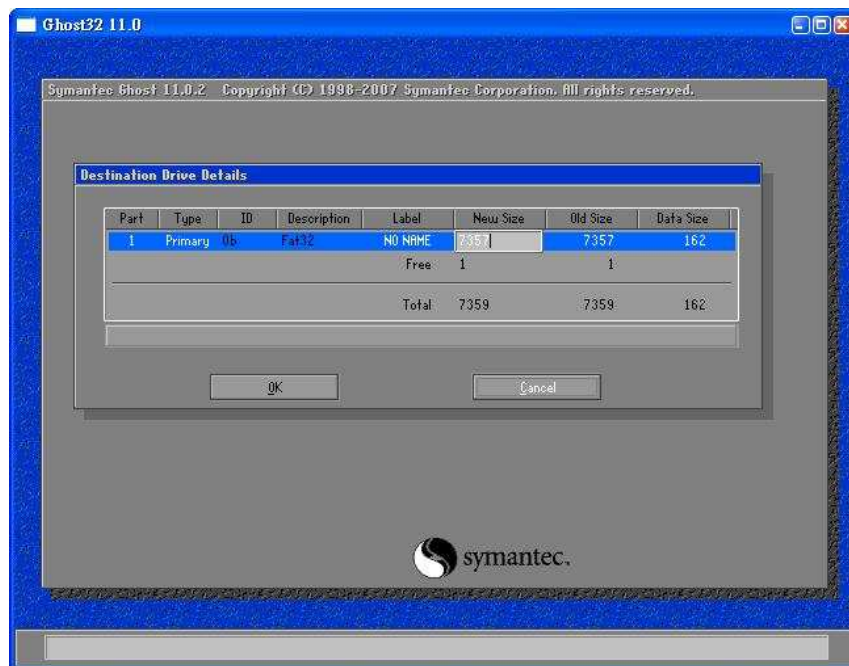
3. Select the "Rescue_Disk.gho" file



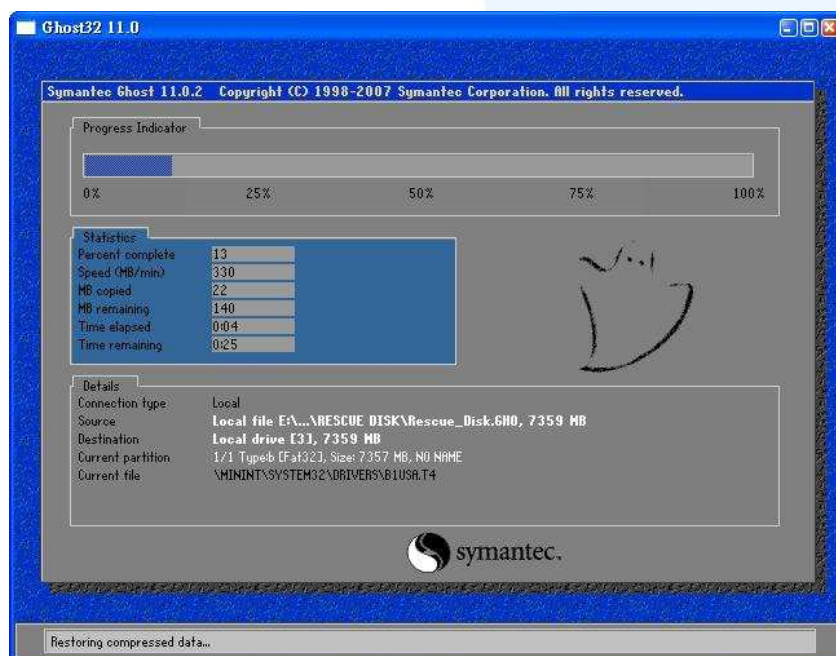
4. Select the destination to CF card and click 'OK'



5. Recovery the "Rescue_Disk.gho" file into CF card and click 'OK'



6. Recovering Rescue Disk



7. So far, Rescue Disk has been done.