

Classification	System and Application FAQ on XPAC				No.	1-010-01	
Author	Cid	Version	1.0.0	Date	2011/3/21	Page	1/2

# How to use wireless Ethernet solution on XPAC

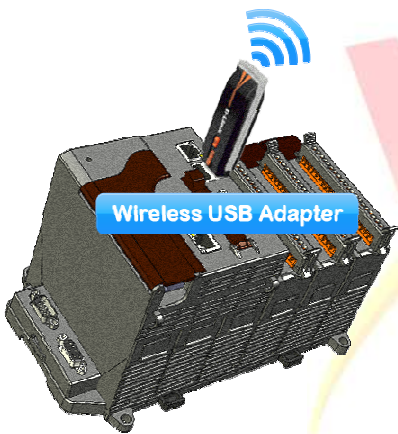
*Applied to:*

Platform	OS version	XPAC utility version
XPAC series	All versions (WinCE6)	All versions

We provide two solutions

## Solution 1: Wireless USB Adapter

We take D-Link DWA-125 for example,



1. We must consider about the driver can support WinCE when using this type of product  
 EX: The DWA-125 uses Ralink chip, we can provide this series of chip driver by mail, if you need.

Note: This series of chips are Ralink 2070, 2080, 3070, 3071 and 3072.

2. You have installed the driver on WinCE before you plug in your wireless USB adapter.

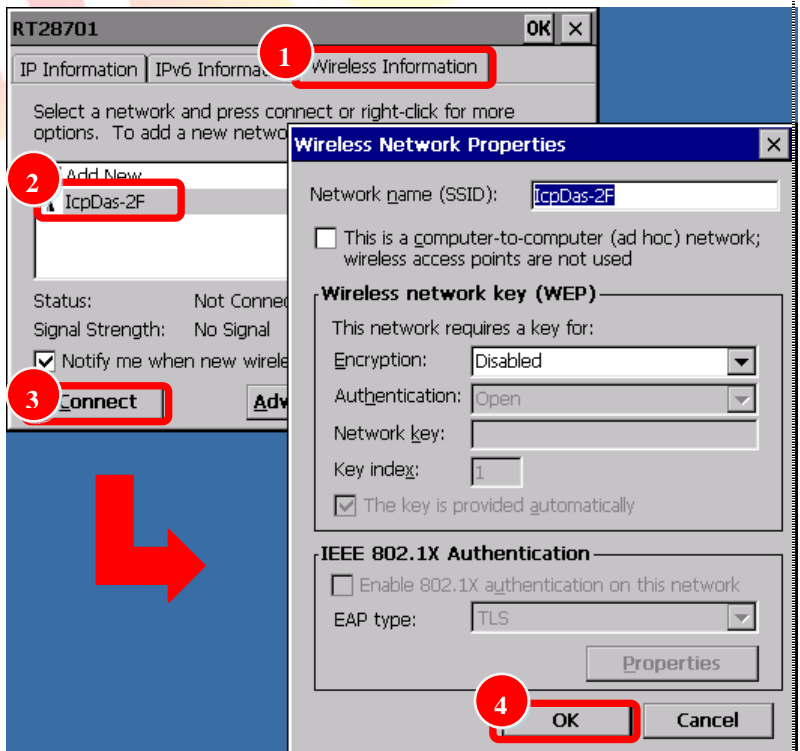
3. When you plug in it

STEP 1: Selete table "Wireless Information"

STEP 2: Selset your Access Point

STEP 3: Click "Connect" button.

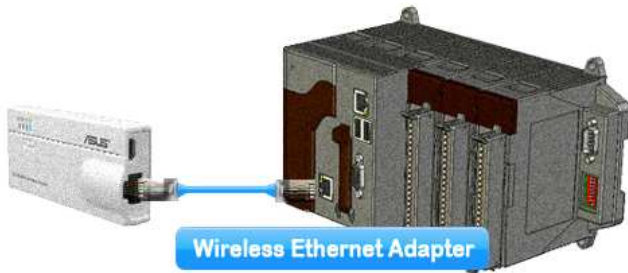
STEP 4: It will show other message, click "OK" button.



Classification	System and Application FAQ on XPAC				No.	1-010-01	
Author	Cid	Version	1.0.0	Date	2011/3/21	Page	2/2

## Solution 2: Wireless Ethernet (Client) Adapter

We take ASUS WL-330gE for example,



1. You have to set to client mode, if it has multi-mode to select.  
EX: The WL-330gE has 4 modes: Access Point, Ethernet Adapter, Gateway and Universal Repeater, so it has to be configured to Ethernet Adapter mode.  
You have to use browser for setting, but WinCE doesn't have browser, so you need to use PC for configuration.
2. Using this type of product, it has to send ARP packet immediately when you link by RJ-45.
3. And then, you don't worry about driver support.

ICP  
DAS