

Classification	System and Application FAQ on XPAC				No.	1-007-02	
Author	Weikai	Version	1.0.0	Date	2010/7/23	Page	1/7

How to set up a communication module (for ex. I-8112/I-8114/I-8142/I-8144) uses MSA (B...)

Applies to:

<i>Platform</i>	<i>OS version</i>	<i>XPAC utility version</i>
<i>XPAC series</i>	<i>All versions (WinCE6)</i>	<i>All versions</i>

Serial communication modules are designed for use with intelligent devices such as bar code readers, serial printers, intelligent sensors, instrumentation equipment, computers, and almost any device providing the RS-232 or RS-422/485 serial communication.

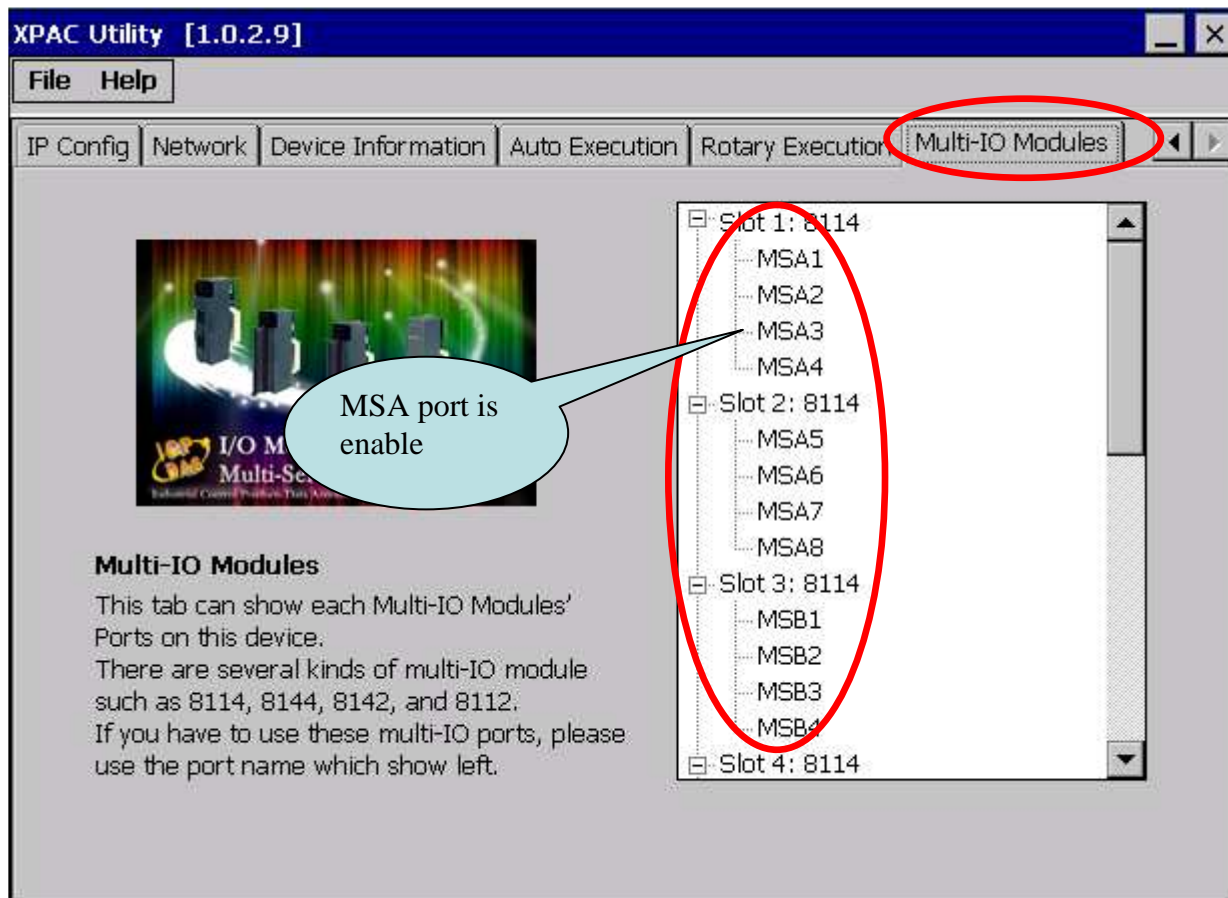
To set up a communication module

Step 1: Insert the multi-serial port module.

- 1.1. Insert the module into any slot
- 1.2. Power off the XPAC

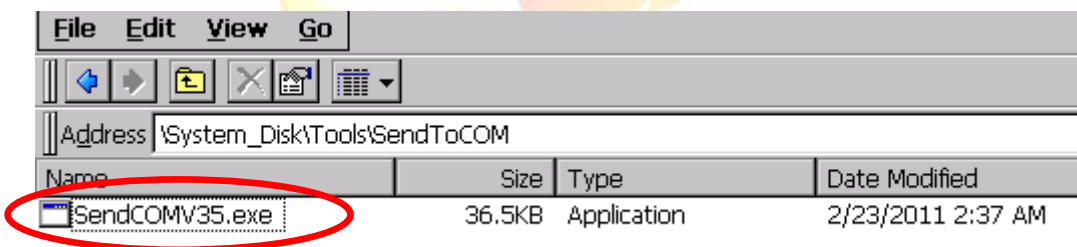
- 1.4. Start the XPAC utility on the desktop, and then click the **"Multi-IO Module"** index page.

Classification	System and Application FAQ on XPAC				No.	1-007-02	
Author	Weikai	Version	1.0.0	Date	2010/7/23	Page	2/7



Step 2: Test the multi-serial port module(s).

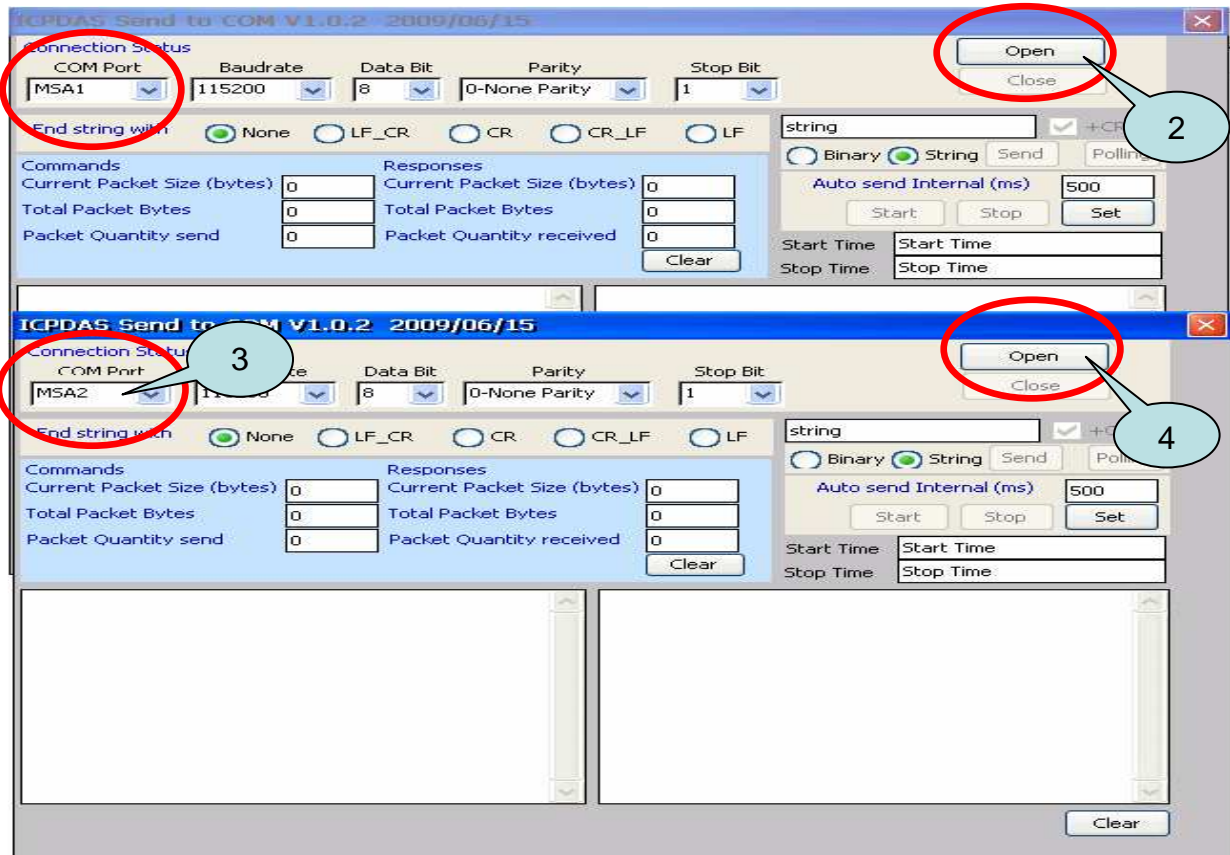
2.1. Connect the two ports of I-8142 and execute the **SendCOMV35.exe** file located in “\System_Disk\Tools\SendToCOM”.



2.2. Execute the SendToCOM.exe files again, now two SendToCOM.exe are running; and

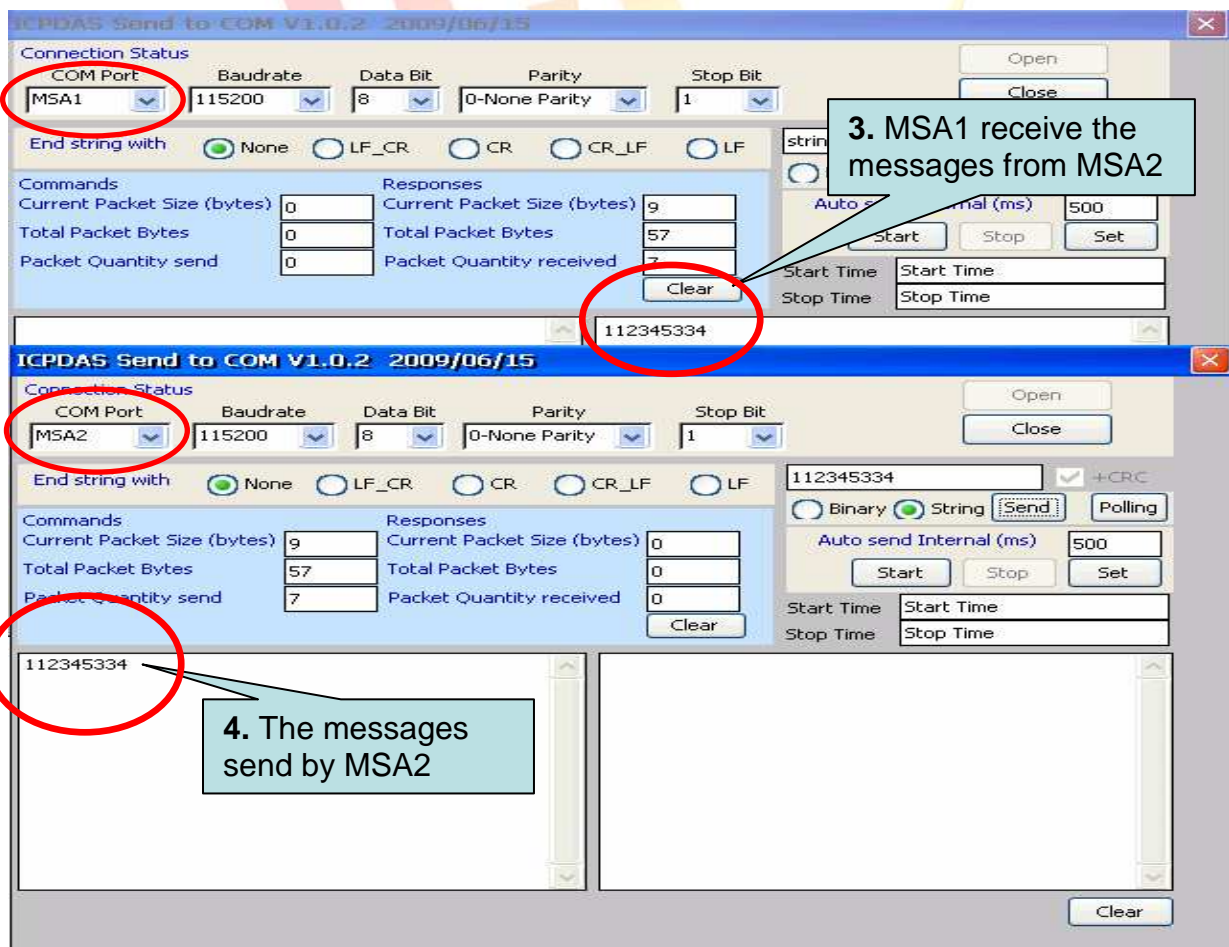
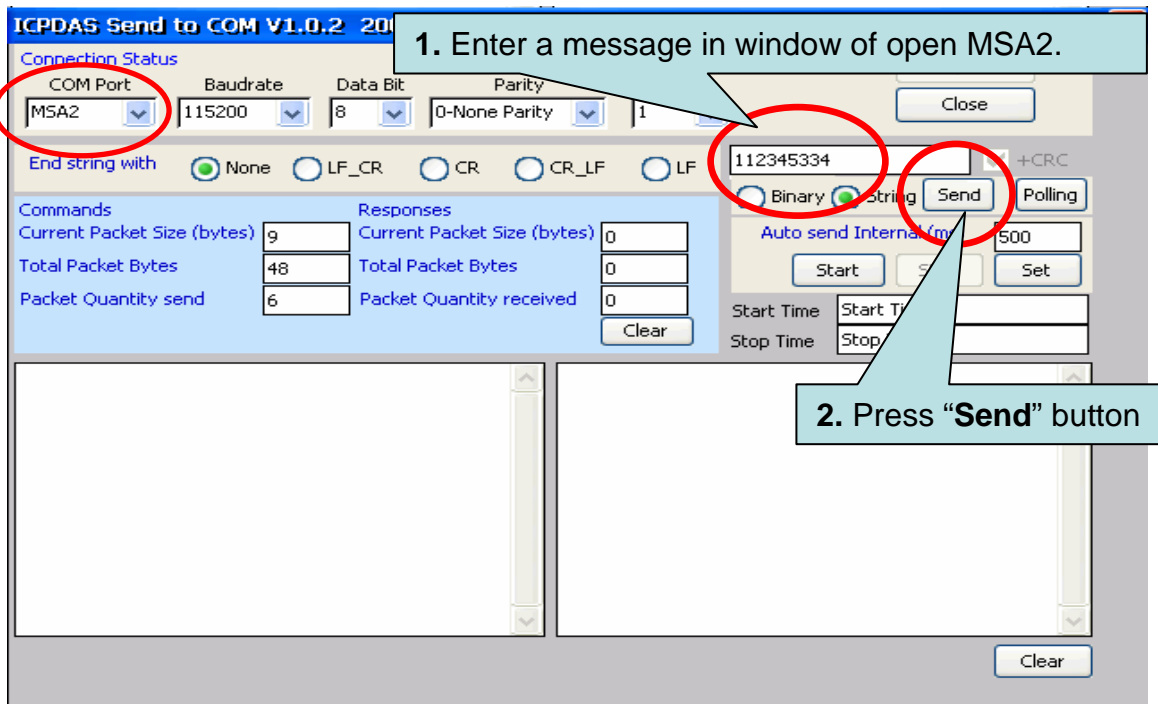
Classification	System and Application FAQ on XPAC				No.	1-007-02	
Author	Weikai	Version	1.0.0	Date	2010/7/23	Page	3/7

then open COM Ports “MSA1” and “MSA2” (each corresponding to a real COM port).



2.3. Use MSA2 to send a message to MSA1 and check the result.

Classification	System and Application FAQ on XPAC				No.	1-007-02	
Author	Weikai	Version	1.0.0	Date	2010/7/23	Page	4/7



How to get the name of COM Ports

Classification	System and Application FAQ on XPAC				No.	1-007-02	
Author	Weikai	Version	1.0.0	Date	2010/7/23	Page	5/7

Overview

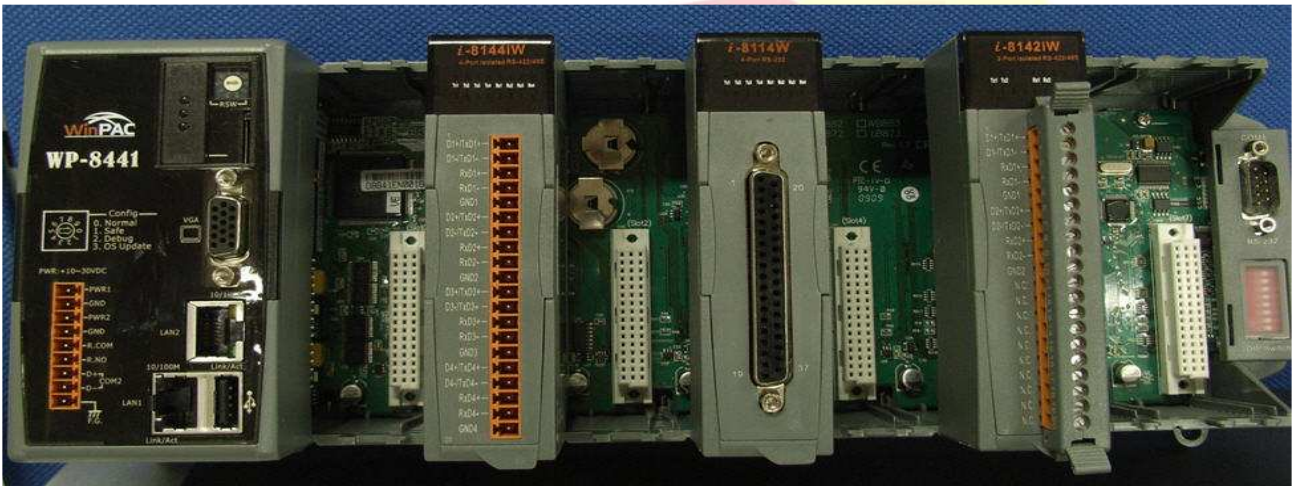
The maximum number of expanded COM port on communication modules supported is up to 28. The 28 COM ports will be named in order of **MSA1~MSA8, MSB1~MSB8, MSC1~8 and MSD1~8** since insert multi-serial port module.

To use the COM ports, you need assign the com port name as belows:

VB.net: Dim port As SerialPort = New SerialPort("MSA1")

C#: System.IO.Ports.SerialPort port = new System.IO.Ports.SerialPort("MSA1");

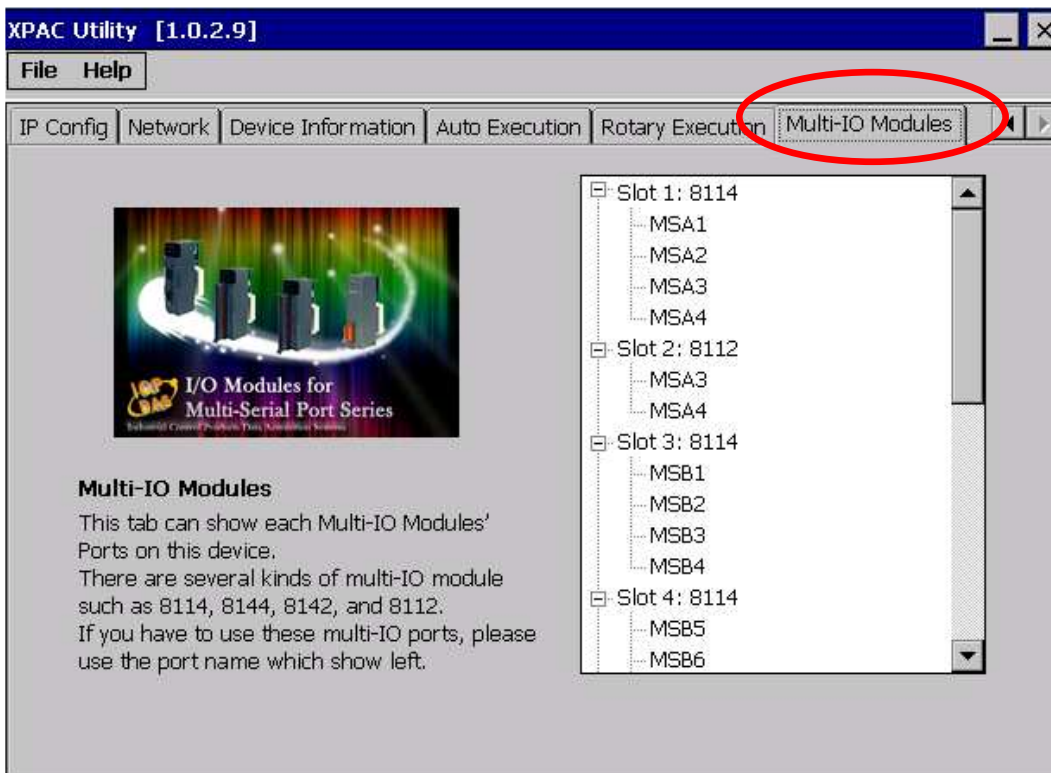
VC: HANDLE hport=CreateFile(_T("MSA1:"),.....);



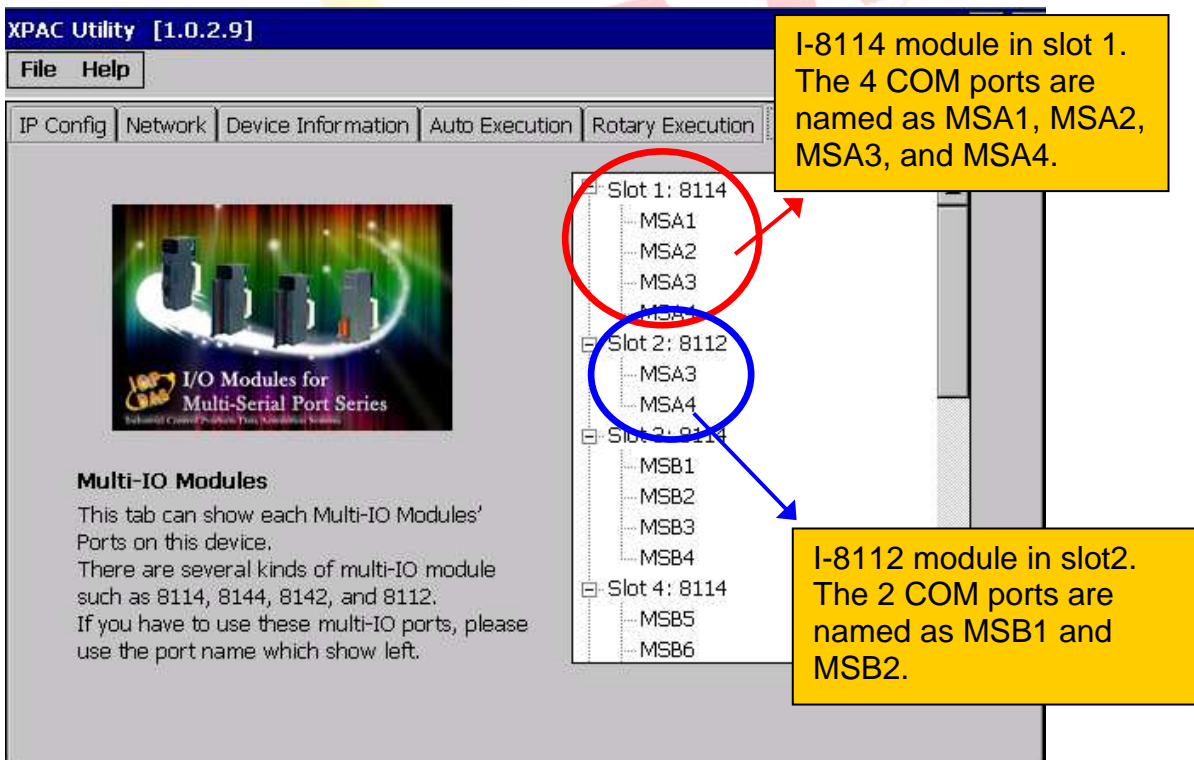
The following are the steps of getting the name of each COM Port:

Step 1: Start the XPAC Utility on the desktop, and then click the “Multi-serial port” tag.

Classification	System and Application FAQ on XPAC				No.	1-007-02	
Author	Weikai	Version	1.0.0	Date	2010/7/23	Page	6/7



Step 2: The COM ports are grouped in the slot that the module plugged.




Classification	System and Application FAQ on XPAC				No.	1-007-02	
Author	Weikai	Version	1.0.0	Date	2010/7/23	Page	7/7

XPAC Utility [1.0.2.9]

File Help

IP Config | Network | Device Information | Auto Execution | Rotary Execution | Multi-IO Modules



Multi-IO Modules
 This tab can show each Multi-IO Modules' Ports on this device.
 There are several kinds of multi-IO module such as 8114, 8144, 8142, and 8112.
 If you have to use these multi-IO ports, please use the port name which show left.

- [-] Slot 1: 8114
 - [-] MSA1
 - [-] MSA2
 - [-] MSA3
 - [-] MSA4
- [-] Slot 2: 8112
 - [-] MSA3
 - [-] MSA4
- [-] Slot 3: 8114
 - [-] MSB1
 - [-] MSB2
 - [-] MSB3
 - [-] MSB4
- [-] Slot 4: 8114
 - [-] MSB5
 - [-] MSB6

I-8114 module in slot 3.
 The 4 COM ports are named as MSA7,MSA8,MSB1, MSB2

