

Classification	System and Application FAQ on XPAC				No.	1-005-06	
Author	WeiKai	Version	1.0.0	Date	2010/10/28	Page	1/4


## How to calibrate a Penmount serial touch panel

Applies to:

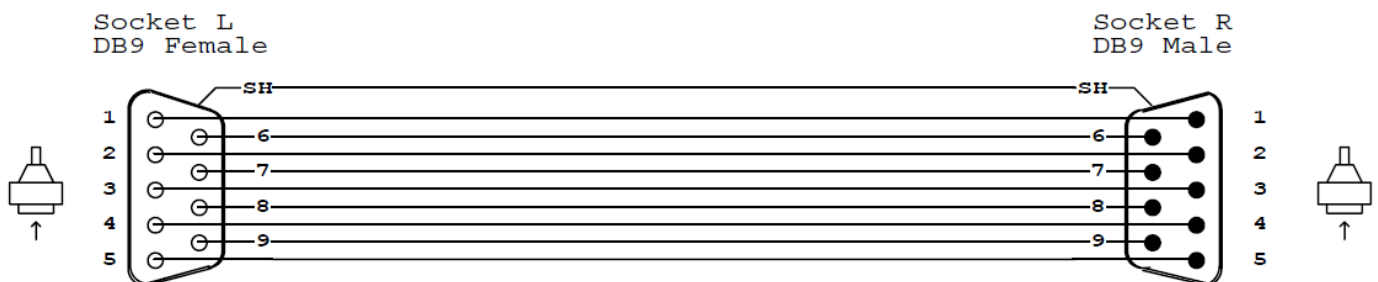
Platform	OS version	XPAC utility version
XPAC series	All versions (WinCE6)	All versions

*N/A: Not applicable to this platform and OS.*

## Tips & Warnings

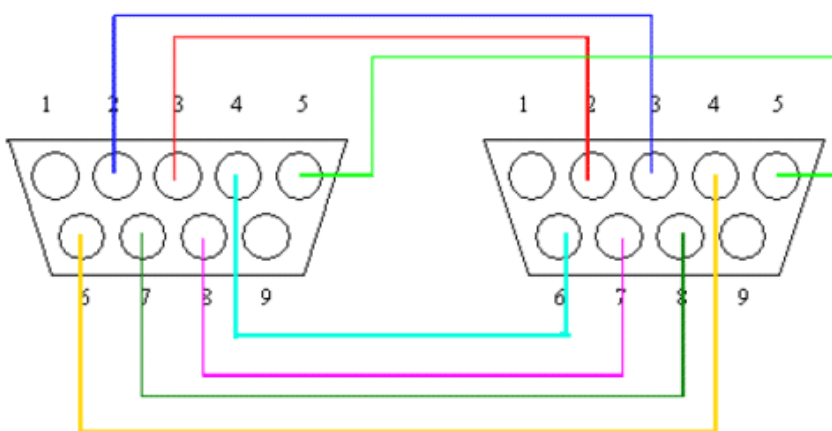
-  Serial COM Ports 2 and 5 on XP-8000 are standard female/male RS-232 COM Ports. If COM4 is used to connect to the touch panel, you will need a "NULL MODEM".

## Standard Wiring



## NULL MODEM

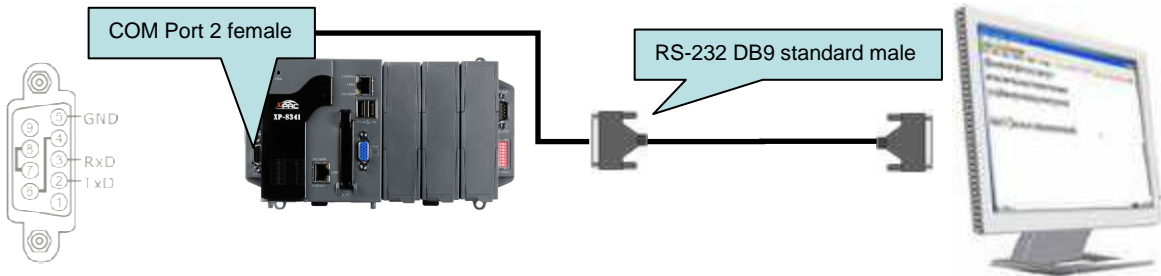
Null Modem DB9 cable : Dreambox Serial cable



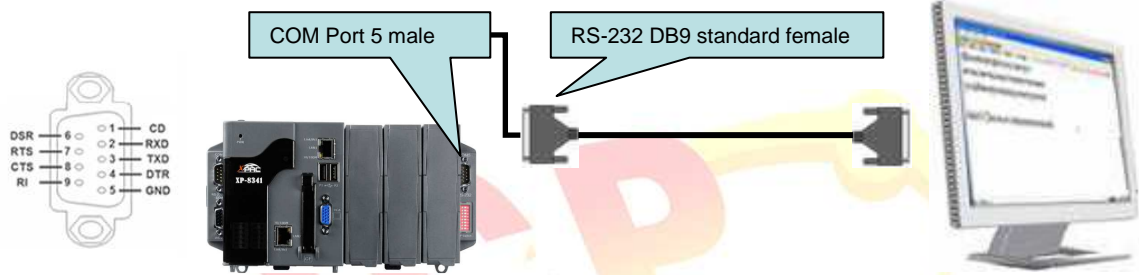
The DB9 side showed here is the one you solder the wires

Classification	System and Application FAQ on XPAC				No.	1-005-06	
Author	Weikai	Version	1.0.0	Date	2010/10/28	Page	2/4

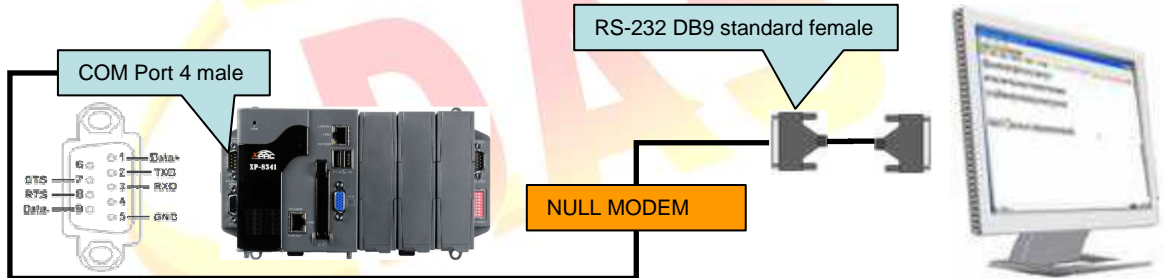
### Connecting to COM2



### Connecting to COM5



### Connecting to COM4

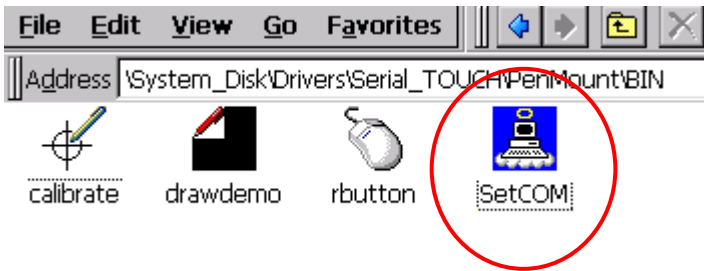


Classification	System and Application FAQ on XPAC				No.	1-005-06	
Author	WeiKai	Version	1.0.0	Date	2010/10/28	Page	3/4

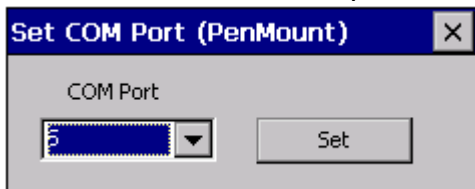
To Set your COM port and calibrate a Penmount serial touch panel, perform the following steps:

**Step 1: Set your COM port.**

1.1 Click My Device->System\_Disk->Drivers->Serial\_TOUCH->PenMount->BIN->SetCom.

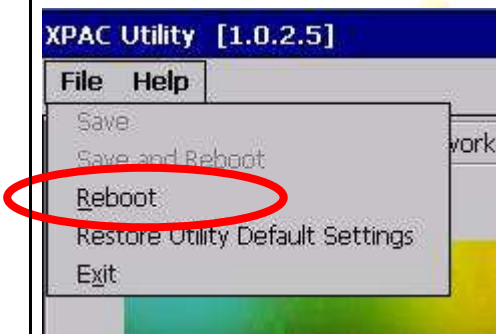


1.2 Perform the SetCOM process to select a COM port (Default COM port is 5).



**Step 2: Reboot your XPAC.**

2.1. Start the XPAC utility on the desktop. **Click** the “File->Reboot” menu option.



2.2. **Click** the “Yes” button and wait for the device to reboot.



Classification	System and Application FAQ on XPAC				No.	1-005-06	
Author	WeiKai	Version	1.0.0	Date	2010/10/28	Page	4/4

**Step 3: Execute** the calibration program.

31.1. Click My Device->System\_Disk->Drivers->Serial\_TOUCH->PenMount->BIN->Calibration.



3.2. Perform the calibration process.

3.2.1. Touch the end point and draw a line in the direction of the arrow.

3.2.2. Touch the “+” icon on the monitor, to perform the calibration process.

