

|                |                                    |         |       |      |            |          |     |
|----------------|------------------------------------|---------|-------|------|------------|----------|-----|
| Classification | System and Application FAQ on XPAC |         |       |      | No.        | 1-005-05 |     |
| Author         | WeiKai                             | Version | 1.0.0 | Date | 2010/11/26 | Page     | 1/5 |

## How to calibrate an ELO serial touch panel

Applies to:

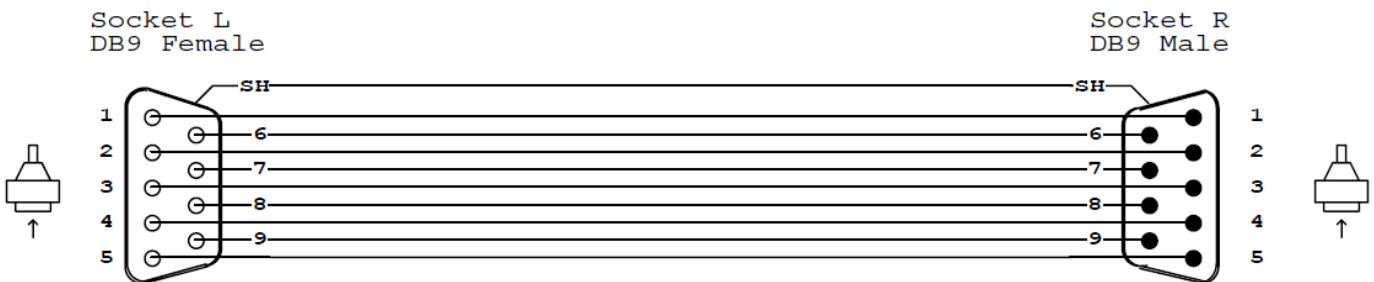
| Platform    | OS version            | XPAC utility version |
|-------------|-----------------------|----------------------|
| XPAC series | All versions (WinCE6) | All versions         |
|             |                       |                      |
|             |                       |                      |
|             |                       |                      |

*N/A: Not applicable to this platform and OS.*

### Tips & Warnings

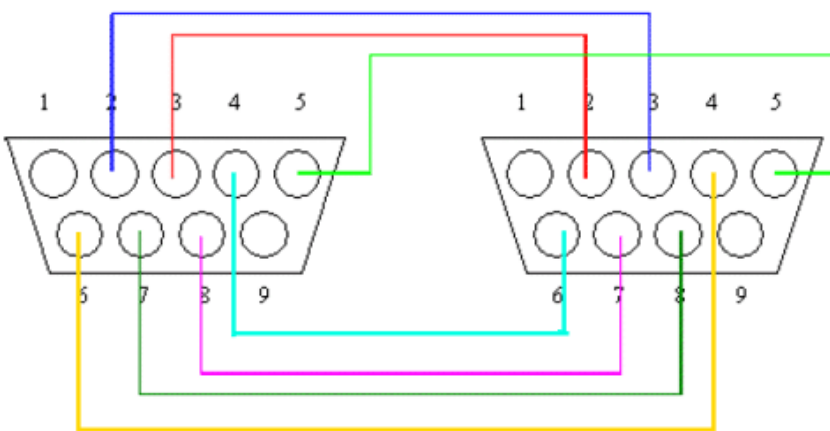
**!** Serial COM Ports 2 and 5 on XP-8000 are standard female/male RS-232 COM Ports. If COM4 is used to connect to the touch panel, you will need a "NULL MODEM".

### Standard Wiring



### NULL MODEM

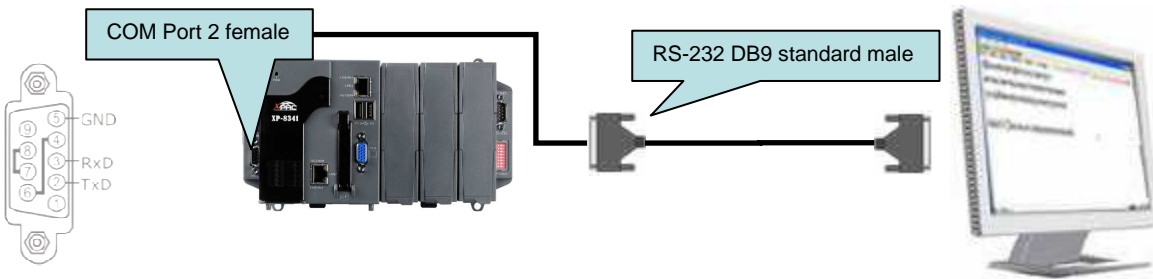
Null Modem DB9 cable : Dreambox Serial cable



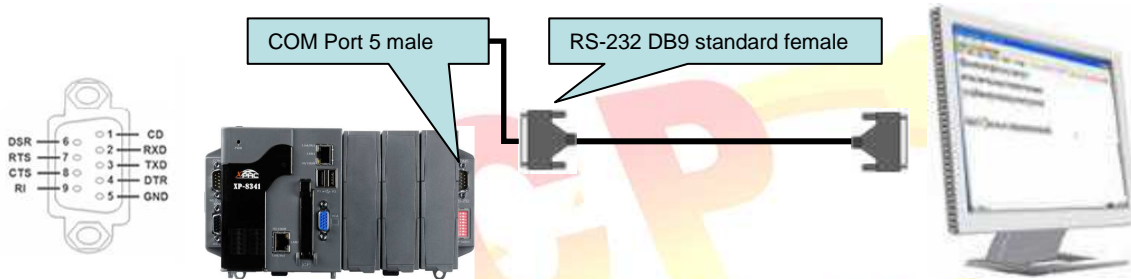
The DB9 side showed here is the one you solder the wires

|                |                                    |         |       |      |            |          |     |
|----------------|------------------------------------|---------|-------|------|------------|----------|-----|
| Classification | System and Application FAQ on XPAC |         |       |      | No.        | 1-005-05 |     |
| Author         | WeiKai                             | Version | 1.0.0 | Date | 2010/11/26 | Page     | 2/5 |

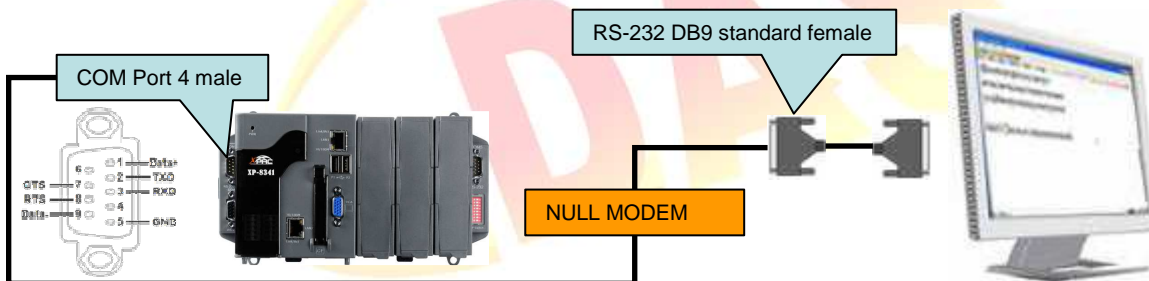
### Connecting to COM 2



### Connecting to COM 5



### Connecting to COM 4



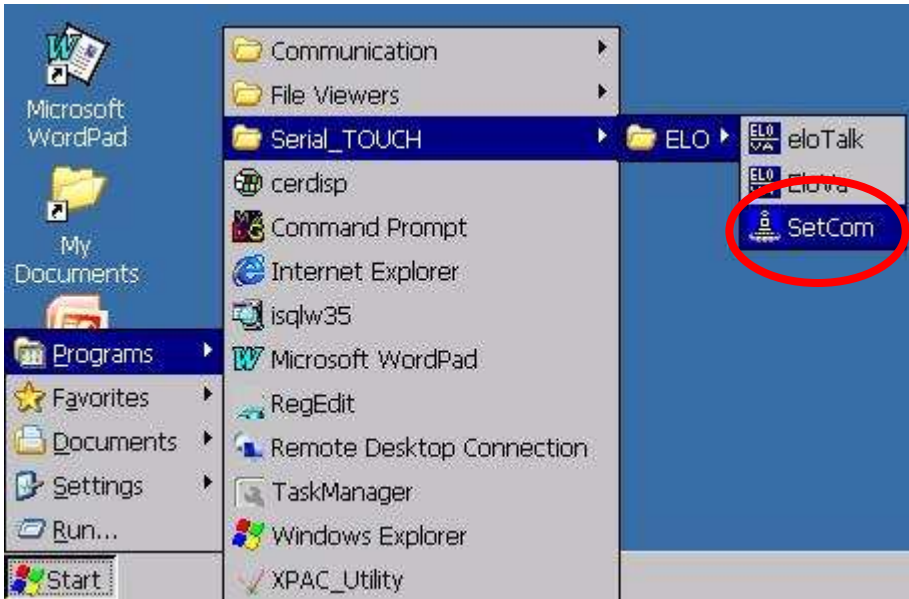
To Set your COM port and calibrate an ELO serial touch panel, perform the following steps:

#### Step 1: Set your COM port.

1.1 After rebooting, select a COM Port be used to connect to the touch panel.

|                |                                    |         |       |      |            |          |     |
|----------------|------------------------------------|---------|-------|------|------------|----------|-----|
| Classification | System and Application FAQ on XPAC |         |       |      | No.        | 1-005-05 |     |
| Author         | WeiKai                             | Version | 1.0.0 | Date | 2010/11/26 | Page     | 3/5 |

1.2 Click Start->Programs->Serial\_TOUCH->ELO->SetCom.exe



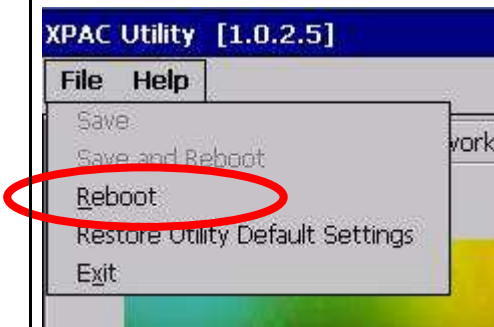
1.3 Perform the SetCOM process.



1.4 Select the COM port you use. (Default COM port is "COM5:")

**Step 2: Reboot** your XPAC.

2.1. Start the XPAC utility on the desktop. **Click** the "File->Reboot" menu option.



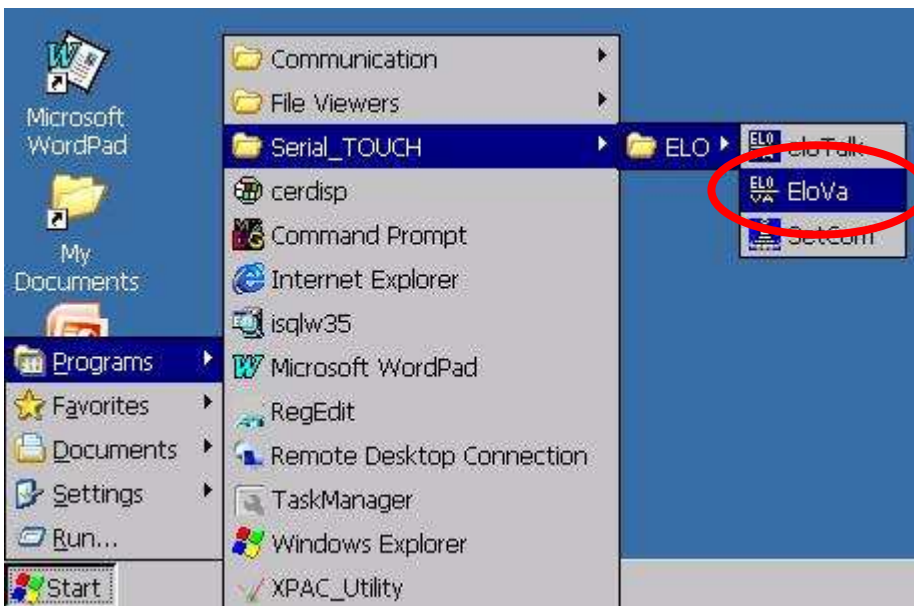
|                |                                    |         |       |      |            |          |     |
|----------------|------------------------------------|---------|-------|------|------------|----------|-----|
| Classification | System and Application FAQ on XPAC |         |       |      | No.        | 1-005-05 |     |
| Author         | WeiKai                             | Version | 1.0.0 | Date | 2010/11/26 | Page     | 4/5 |

2.2. **Click** the “Yes” button and wait for the device to reboot.



**Step 3: Execute** the calibration program.

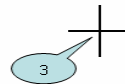
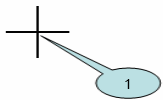
3.1. Click Start->Programs->Searial\_TOUCH->ELO->EloVa.exe



|                |                                    |         |       |      |            |          |     |
|----------------|------------------------------------|---------|-------|------|------------|----------|-----|
| Classification | System and Application FAQ on XPAC |         |       |      | No.        | 1-005-05 |     |
| Author         | WeiKai                             | Version | 1.0.0 | Date | 2010/11/26 | Page     | 5/5 |

3.2. Perform the calibration process.

3.1. Touch the “+” icons on the monitor to perform the calibration process.



Touch targets from a position of normal use.

