

Classification	System and Application FAQ on XPAC				No.	1-005-01	
Author	WeiKai	Version	1.0.0	Date	2010/11/26	Page	1/3

How to calibrate an Egalax USB touch panel

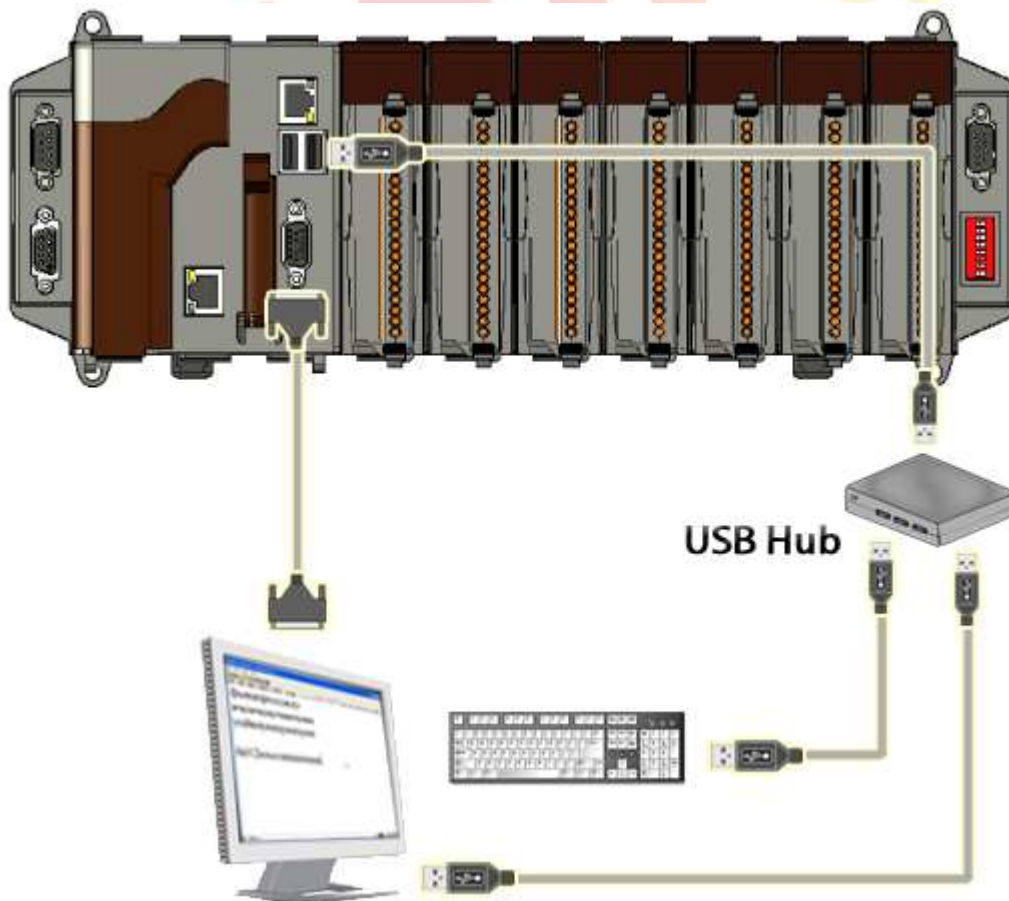
Applies to:

<i>Platform</i>	<i>OS version</i>	<i>XPAC utility version</i>
<i>XPAC series</i>	<i>All versions (WinCE6)</i>	<i>All versions</i>

N/A: Not applicable to this platform and OS.

Use a touch panel and a keyboard at the same time on XP-8x4x.

The XP-8x4x series only has two USB ports, so if you want use a touch panel and keyboard/mouse at the same time. You will need a USB hub.

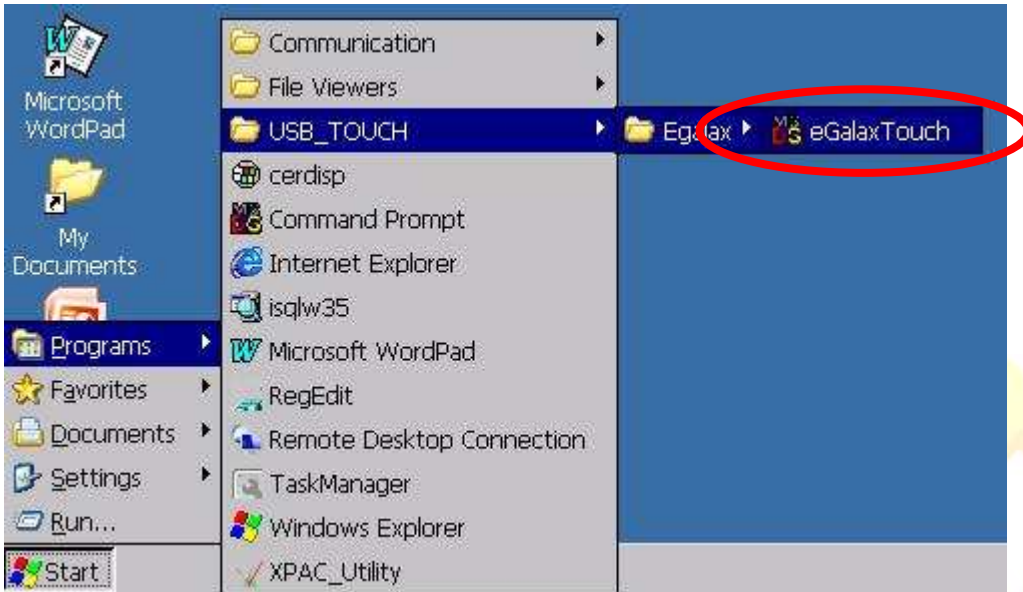


Classification	System and Application FAQ on XPAC				No.	1-005-01	
Author	WeiKai	Version	1.0.0	Date	2010/11/26	Page	2/3

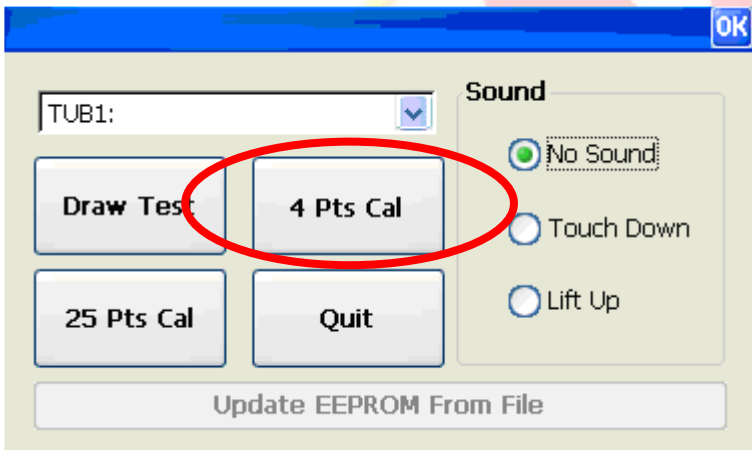
To calibrate an Egalax USB touch panel, perform the following steps:

Step 1: Execute the calibration program.

1.1. Click Start->Programs->USB_TOUCH->Egalax->eGalaxTouch.bat.



1.2. Click the “4 Pts Cal” button. (Click the “25 Pts Cal” button to obtain a more accurate calibration for the touch panel)



Classification	System and Application FAQ on XPAC				No.	1-005-01	
Author	WeiKai	Version	1.0.0	Date	2010/11/26	Page	3/3

1.3. Perform the calibration process.

1.3.1. Touch the "X" icons on the monitor to perform the calibration process.

