

Classification	Ethernet Application FAQ on XPAC				No.	3-002-00	
Author	WeiKai	Version	1.0.0	Date	2011/04/07	Page	1/2

How to set up the Web server

Applies to:

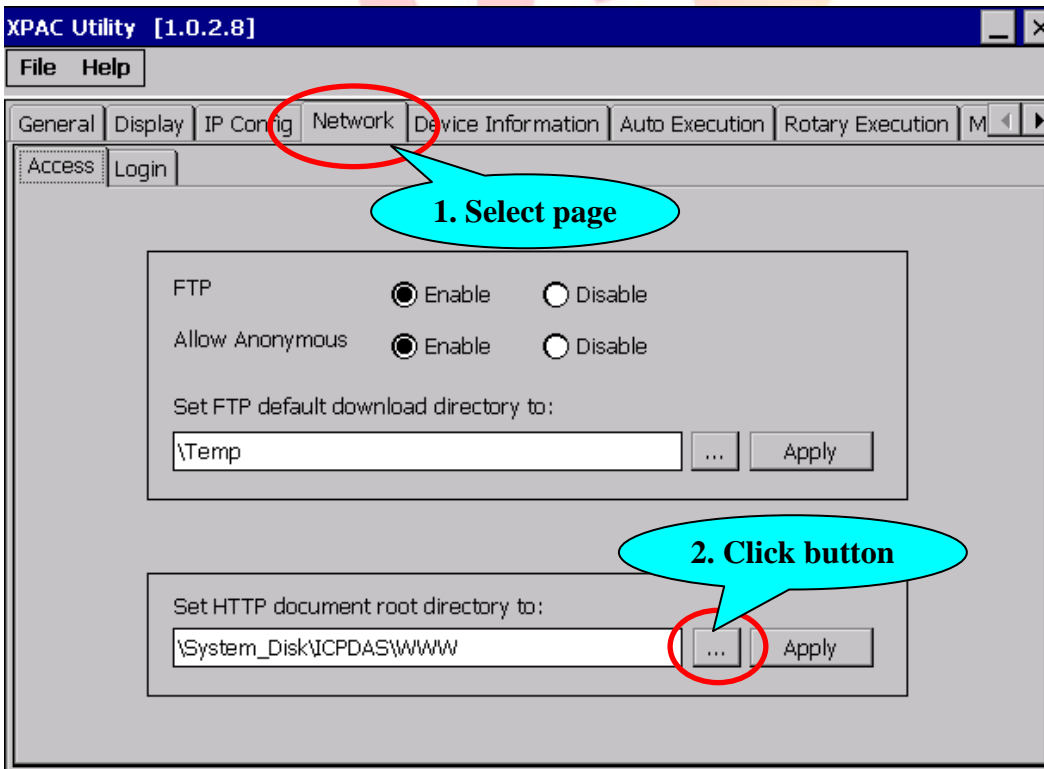
Platform	OS version	XPAC utility version
XPAC series	All versions (WinCE6)	All versions

The web sever is always active on the XPAC, so you can use browser connect to XPAC.

To configure root directory, perform the following steps:

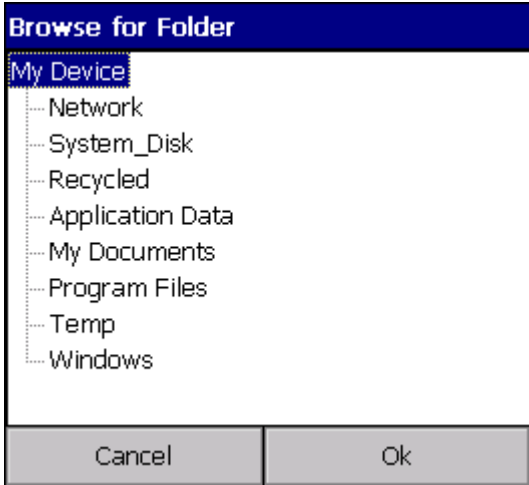
Change root directory

Step 1: Execute the XPAC Utility, and then select "Network" Page, and then click "... " button.



Classification	Ethernet Application FAQ on XPAC				No.	3-002-00	
Author	WeiKai	Version	1.0.0	Date	2011/04/07	Page	2/2

Step 2: Click “...” button will show following dialog, and you can select other root directory for web server.



Step 3: If you change root directory, Click “Apply” button and reboot your XPAC for take effect.

