

WP – 8X4X Version 1.4.2.1 Release Note

Overview

The latest version of OS image and Eboot can be updated to WP-814x /WP-844x/WP-884x series controller.

▶ Latest Version:

| | |
|----------------|---------------------|
| OS | Version 1.4.2.1 |
| Eboot | Version 1.0.6.1 |
| WinPAC utility | Version 2.0.1.3 |
| WinPACSDK | Version 1.0.9.3 |
| WinPACNet | Version 1.2.0.6 |
| .NET CF | Version 2.0.7045.00 |
| SQL CE | Version 3.5.5386.0 |

New Functions

- ▶ Multi-language user interface for OS with multi-language keyboard layout
 - Multi-language
 - English (V1410 and later)
 - German (V1410 and later)
 - Russian (V1410 and later)
 - French (V1420 and later)
 - Spanish (V1420 and later)
 - Italian (V1420 and later)
 - Simplified Chinese
 - Add Pocket IME (简中输入法)
 - Traditional Chinese
 - Add Input Method Editor-Pocket IME (繁中输入法)
 - Add Phonetic Input (Bopomofo) (注音输入法)
- ▶ Provide SNMP protocol
- ▶ Add PM (Power management) function

- Control display on/off by PM
- ▶ Add ActiveSync program to synchronize WinPAC with either a desktop PC
 - ONLY allow COM4(RS232) connection
- ▶ Provide 5 accounts and passwords for FTP/Telnet authentication(Windows CE Authentication Services)
 - Configuration by WinPAC utility (V2013)
- ▶ Add two operation modes determined by the Rotary switch
 - Rotary Switch 6 -> Run VCEP.exe automatically after booting
 - Rotary Switch 5 -> Run DCON_CE.exe automatically after booting

Important Notices

- ▶ Improve the compatibility of USB host port (Fix that some USB hubs cannot be detected by WinPAC in the booting phase)
- ▶ Improve the stability of LAN port(Fix that LAN1/LAN2 sometimes cannot be activated in the booting phase)
- ▶ Set "RUN" led always on while the system is booted.
 - The pac_EnableLED function of WinPACSDK.dll can be called on the user's program to turn on/off the "RUN" led. Such as, while some error happens in the user's application, the user can make "RUN" led blinking for 0.5 second.
- ▶ Default WatchDog for monitoring the system status is changed as Hardware Watchdog.
 - All of the WatchDog API (pac_EnableWatchDog ..etc) on WinPACSDK will be able to work correctly, and the latest version of WinPACSDK.dll (V1.0.9.3), Eboot (V1.0.6.1) and OS (V1.4.2.0) must be updated to WinPAC module.
- ▶ SQL CE 3.5 related DLL files are moved from \Windows to \System_disk,
 - The System disk must be updated first, and the SQL CE function can be able to work on OS with V1.4.1.0 or later version.
- ▶ In this OS image version, the application Quicker is renamed as NAPOPC_CE5.
 - Please refer to <http://opc.icpdas.com/> for more details.

How to enable/display Power management to control turn the display On/Off

The OS have 4 different power states that will be the four states of the internal power manager state machine. The four states are On /User Idle/System Idle/Suspend. The transition from On to User Idle and User Idle to Suspend is done after timers expirations

Display off (On to System Idle status)

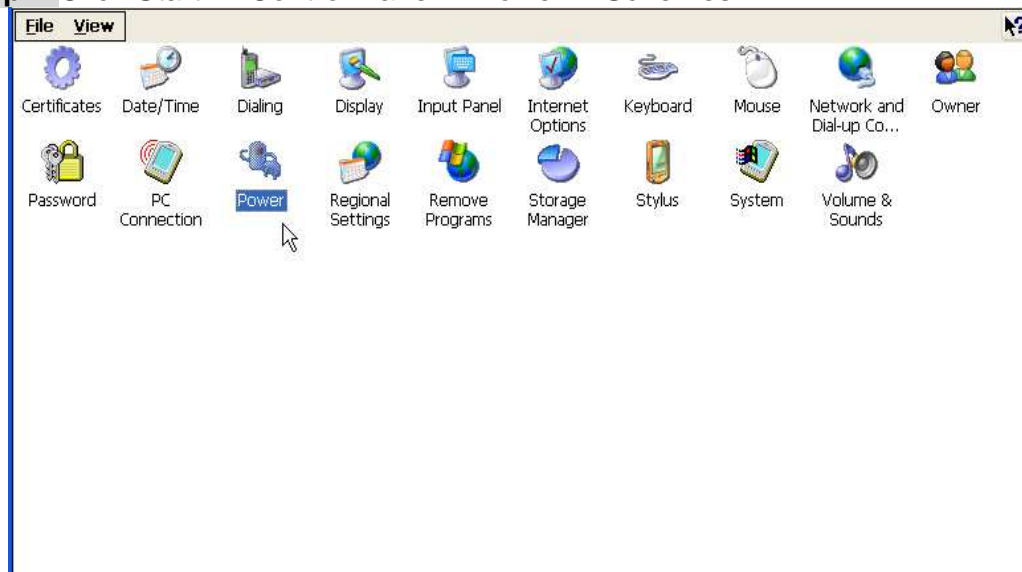
In this version of WinPAC, the display will be turned off automatically, while the system state is system idle.

Recovery Display (System Idle to On status)

If you do nothing on WinPAC after 6 minutes (1 user idle time + 5 system idle time), the display will turn off. You can move mouse or press the keyboard button to wake up the display (turn the display on)

Modified the system idle timeout

Step1: Click Start -->Control Panel-->Power-->Schemes

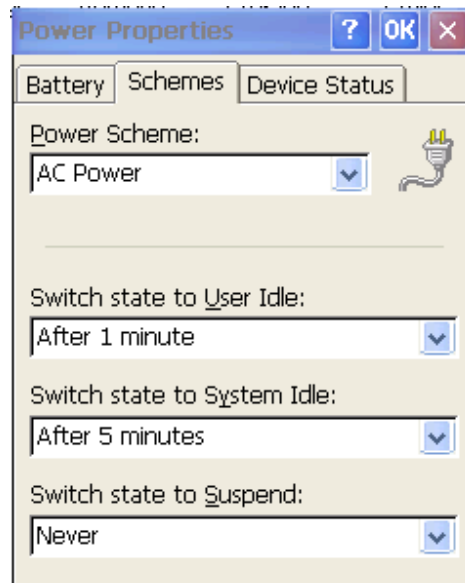


Step2: Select AC Power from Power Scheme

Step3: Modified the time value from "**Switch state to System Idle**"

Step4: Run WinPAC utility and click "Save and Reboot" to save the UI language.

Note: The default value for system Idle is 5 minutes



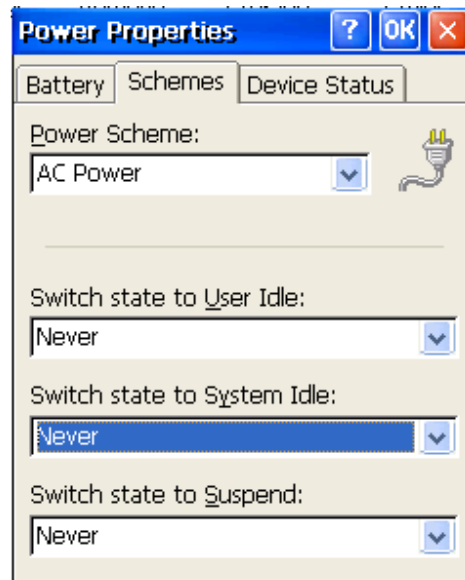
Disable the display on/off by PM

Step1: Click Start -->Control Panel-->Power-->Schemes

Step2: Select AC Power from Power Scheme

Step3: Set the time value to Never on "**Switch state to System Idle**" and "**Switch state to User Idle**"

Step4: Run WinPAC utility and click "Save and Reboot" to save the UI language.

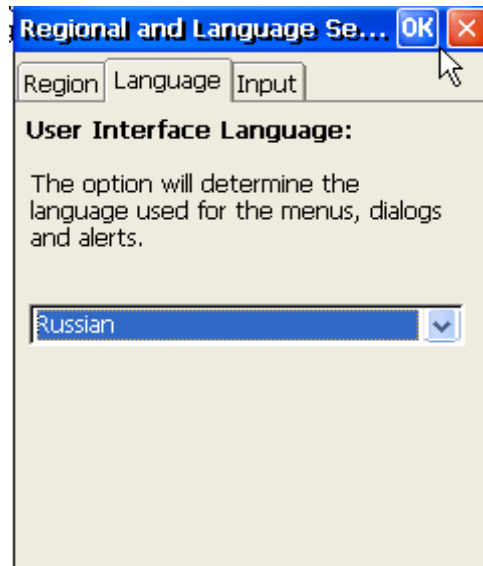


Note: The time value 0 of System Idle is to disable this function

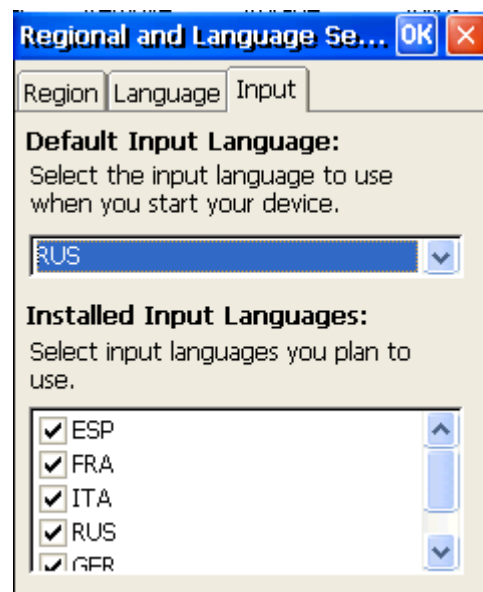
How to use Multi language OS with Multi language keyboard layout

Choose Regional multi-language user interface (take Russian as an example)

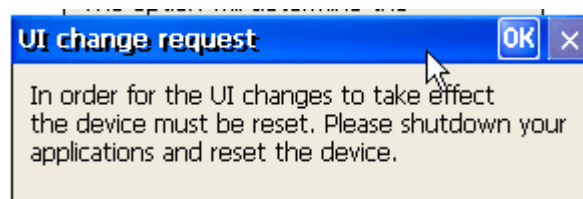
Step1: Click “language” tab and choose “Russian” for User interface language.



Step2: Click “Input” tab and choose “Russian” for User interface language



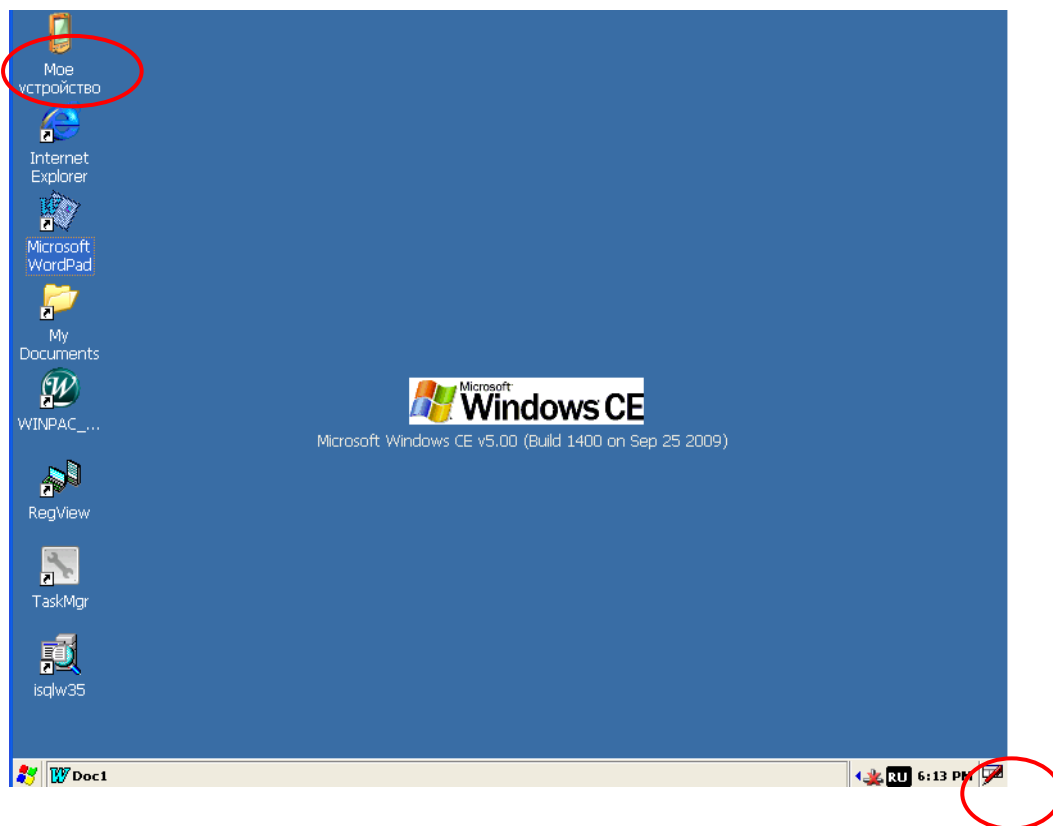
Step3: Click “OK”



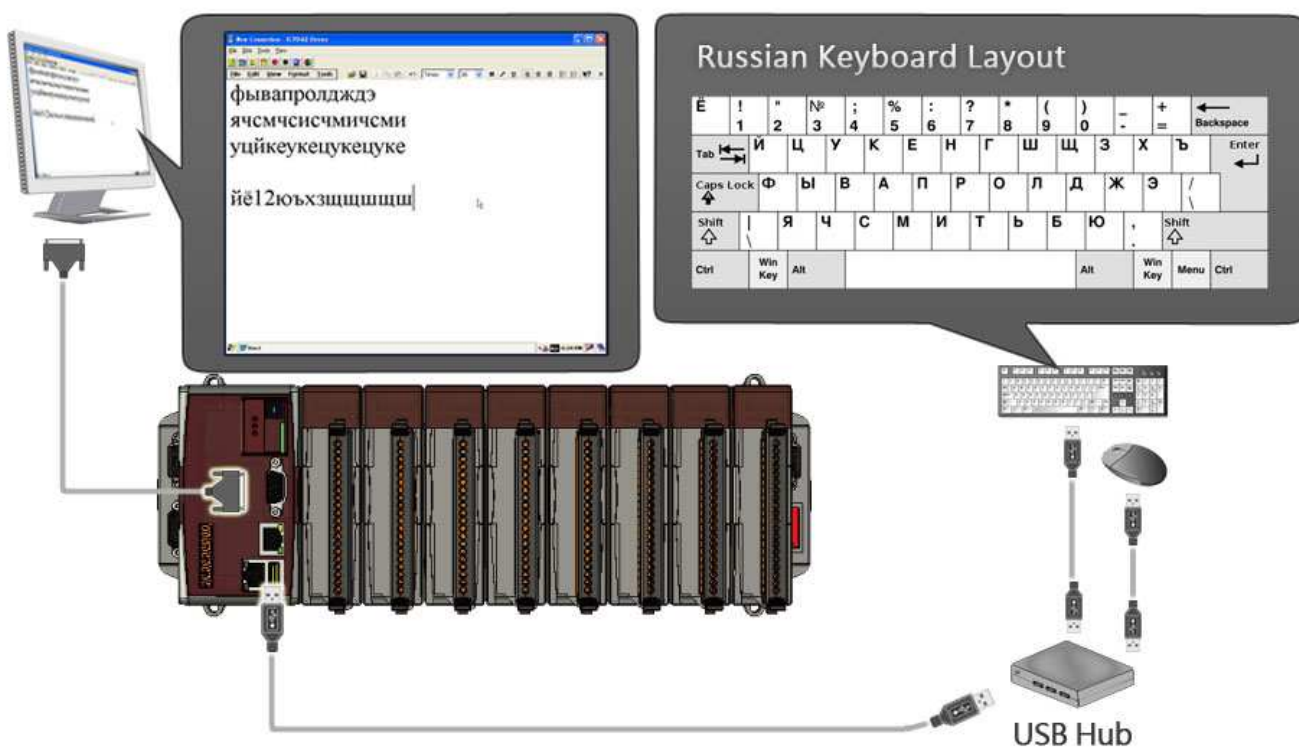
Step4: Run WinPAC utility and click “Save and Reboot” to save the UI language.

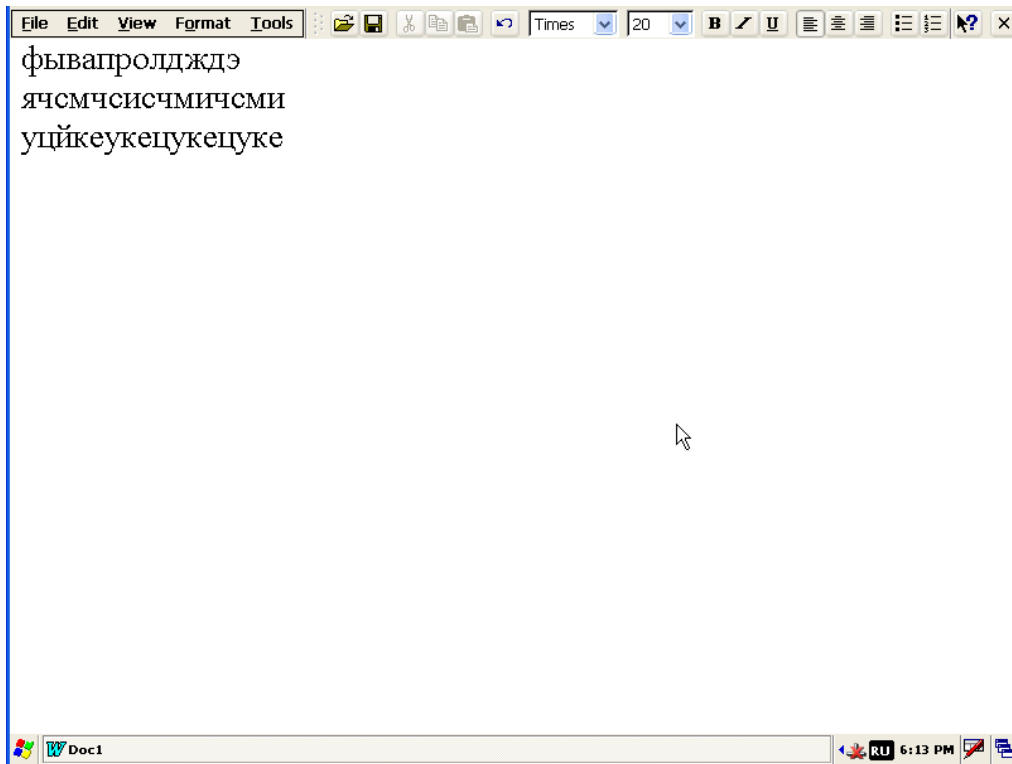
After reboot, the interface language is in Russian and the default input language is also

Russian.

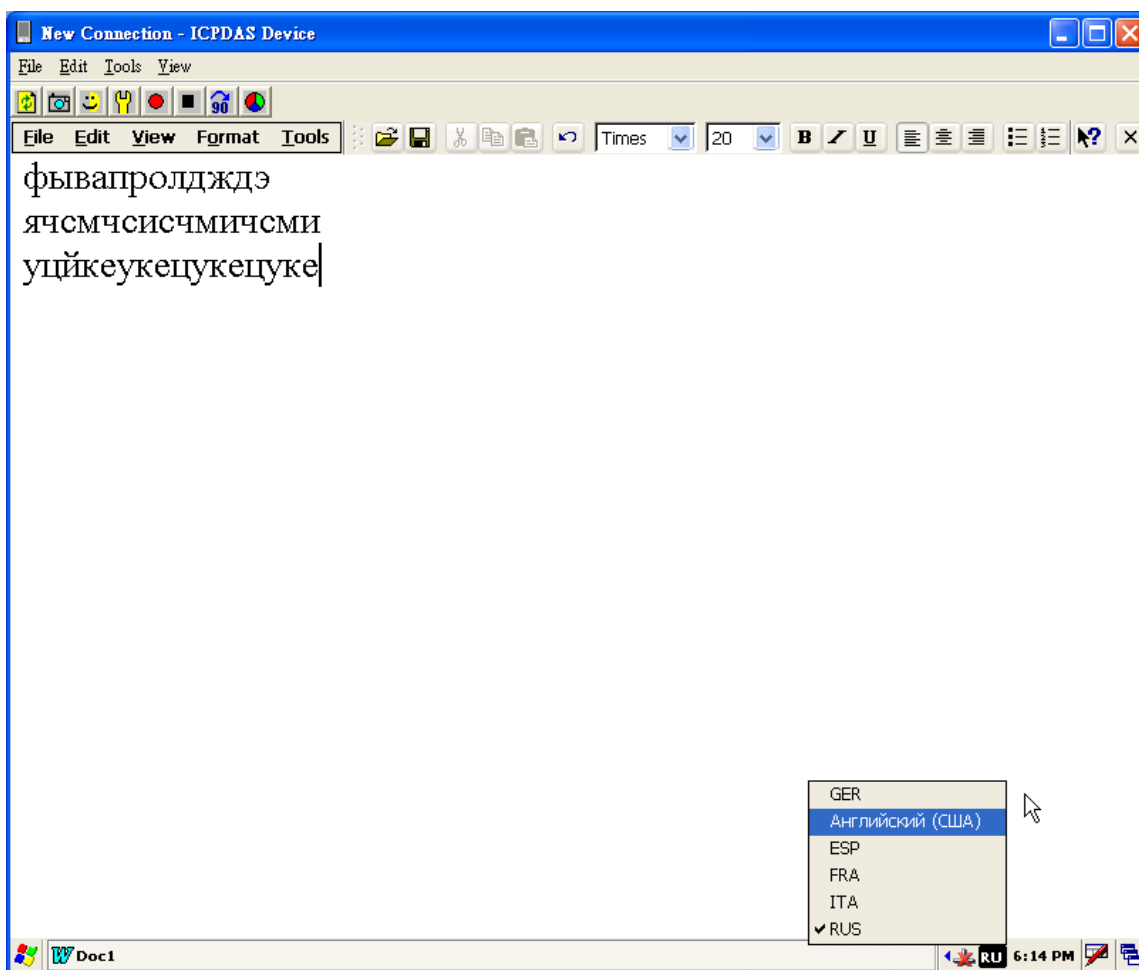


Run "Wordpad" and input any keys from the keyboard, and the Russian fonts will show on the Wordpad.





Click "Ru" icon, and you can change the input to the other language.

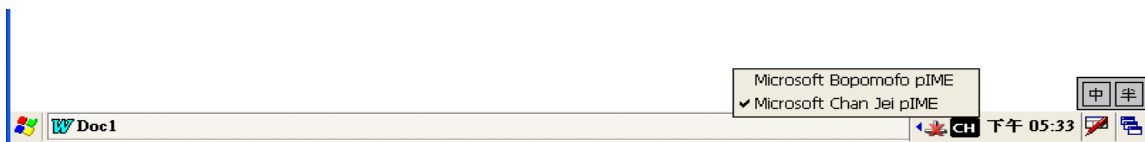


How to use TC/SC Input method

Traditional Chinese input method

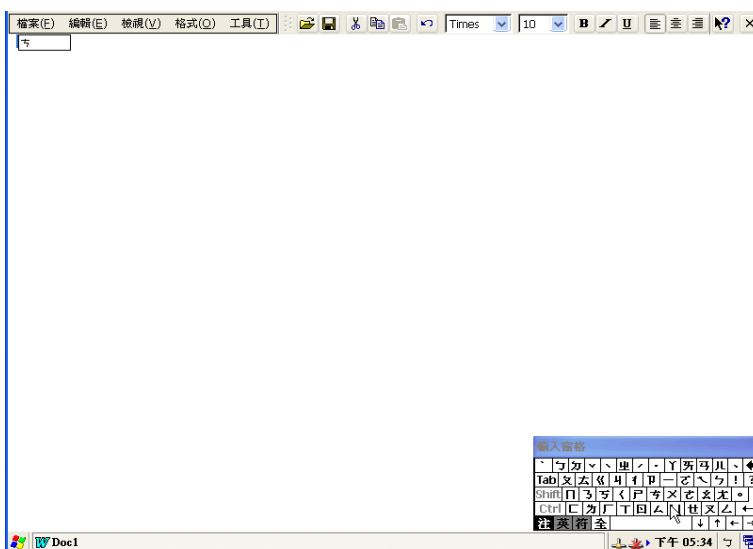
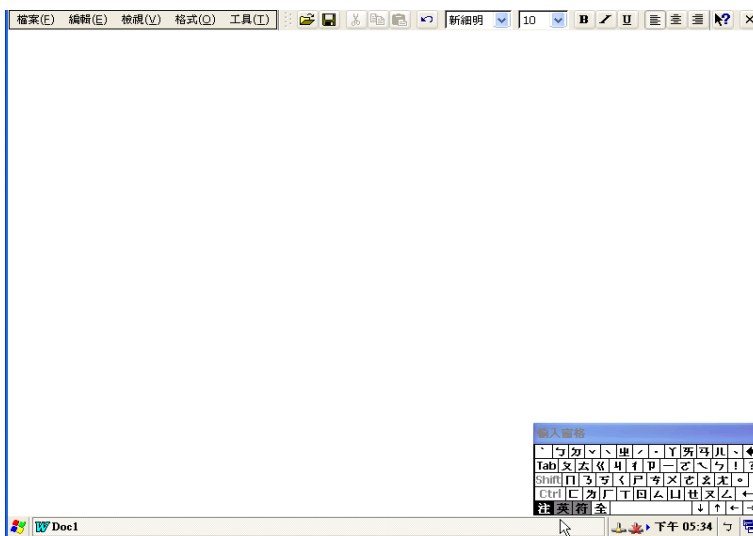
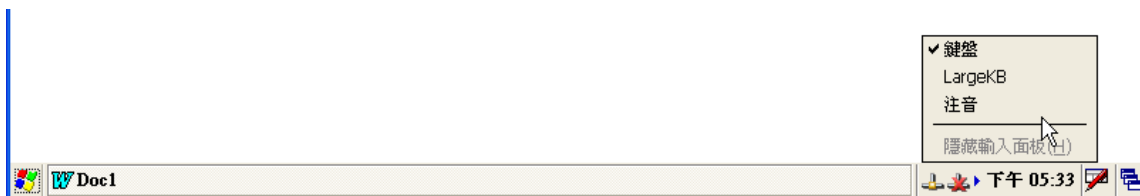
Provide 2 input methods in Traditional Chinese input method

- Microsoft Bopomofo pIME (注音)
- Microsoft Chan Jei PIME(倉頡)



And 1 input method editor

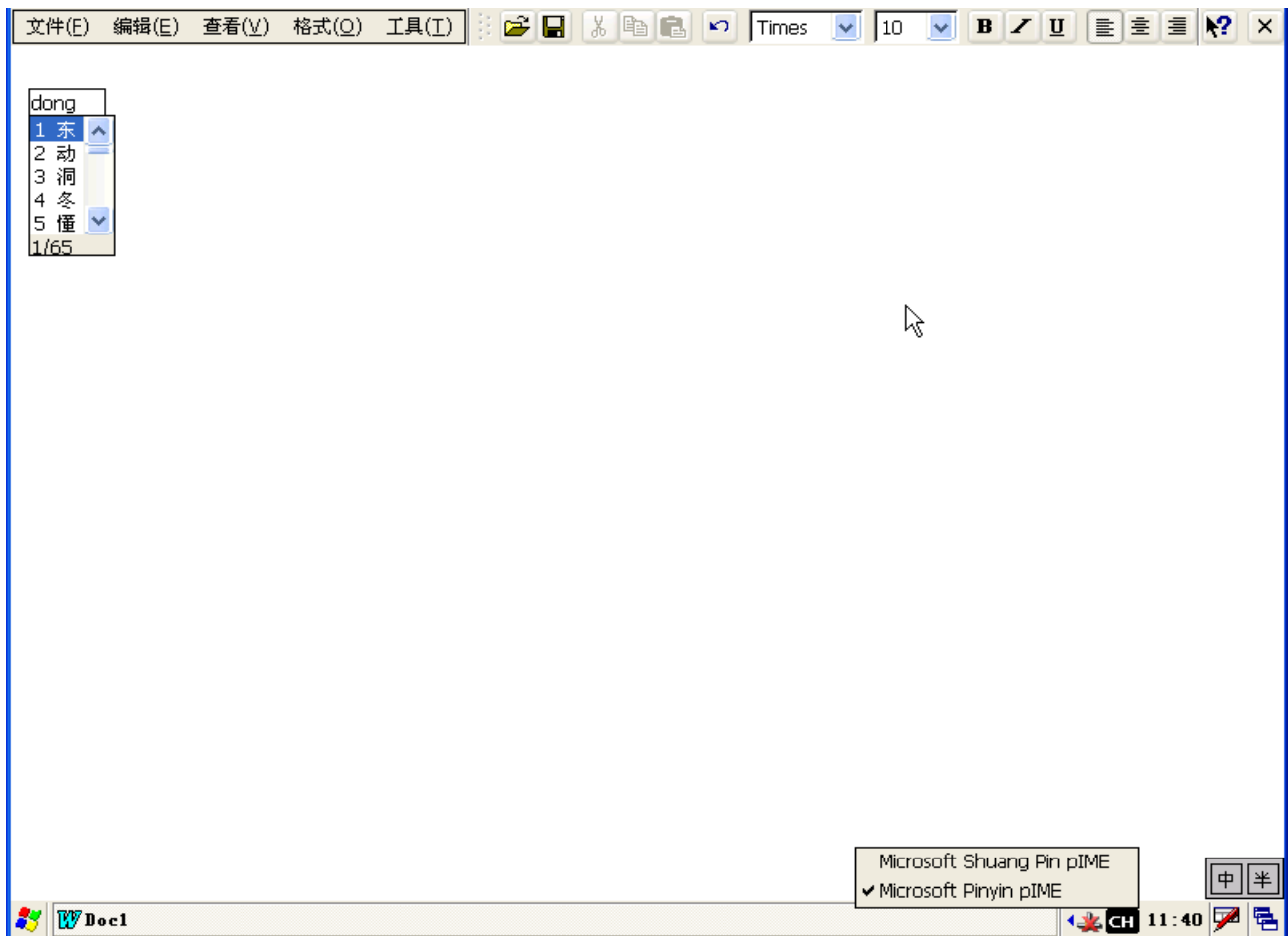
- Pocket IME



Simplified Chinese input method

Provide 2 input methods in Simplified Chinese input method

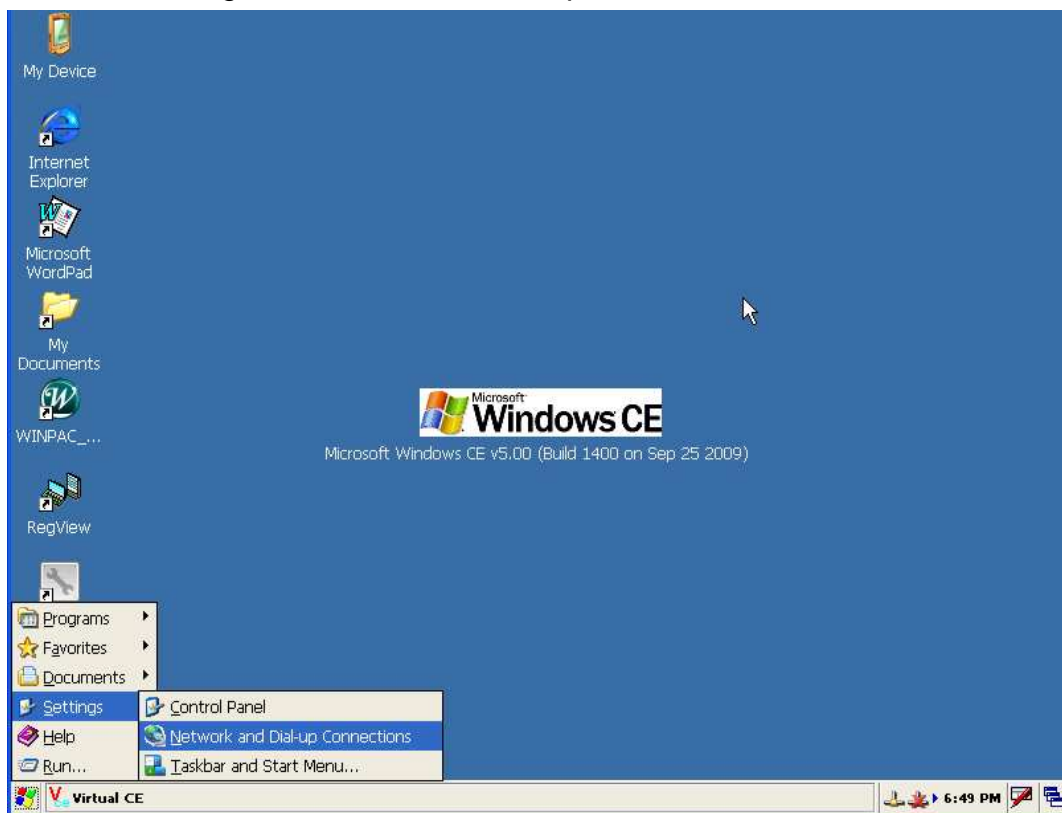
- Microsoft Shuang Pin pIME (双拼)
- Microsoft Pinyin pIME(拼音)



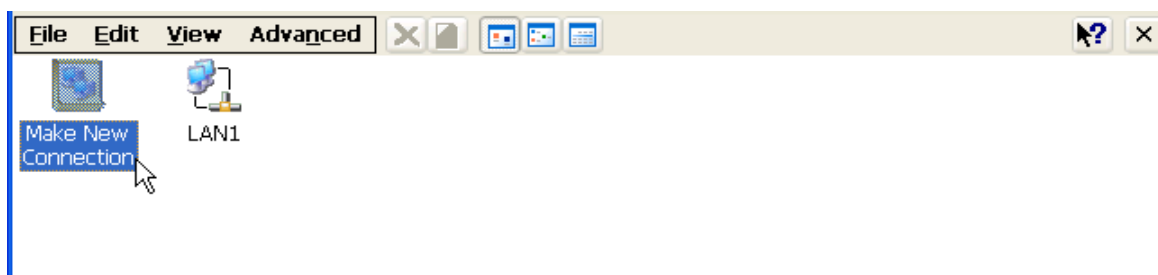
How to use ActiveSync on WinPAC

Set ActiveSync on WinPAC site

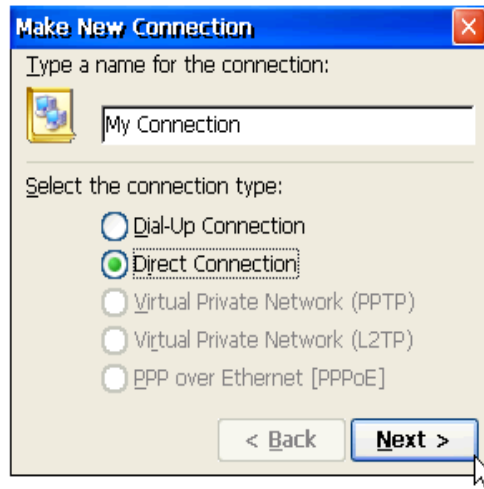
Step1: Run Start-->Settings-->Network and Dial-up Connections



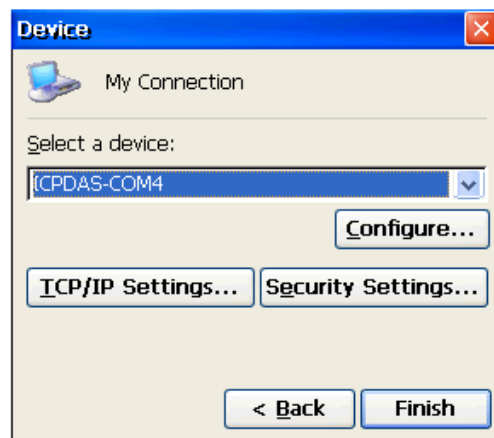
Step2: Click “Make New Connection”



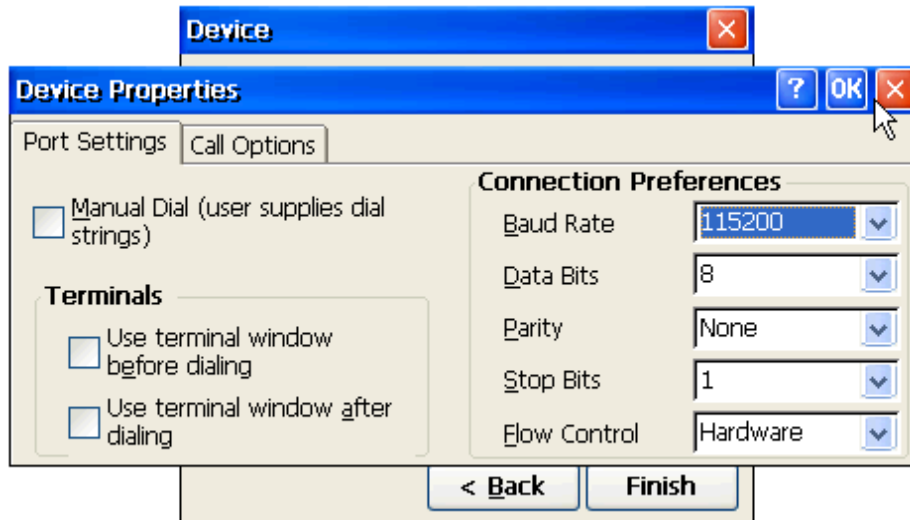
Step3: Choose “Direct Connection” radio button and Click Next button



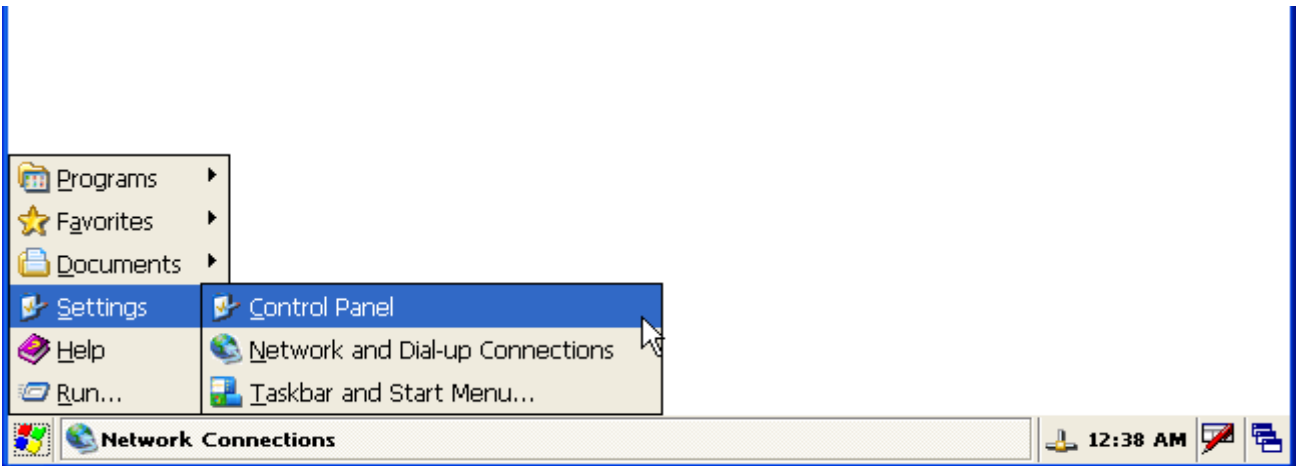
Step4: Choose ICPDAS-COM4 from “Select a device” combobox and Click “Configure” button



Step5: Choose Baud rate and Click OK



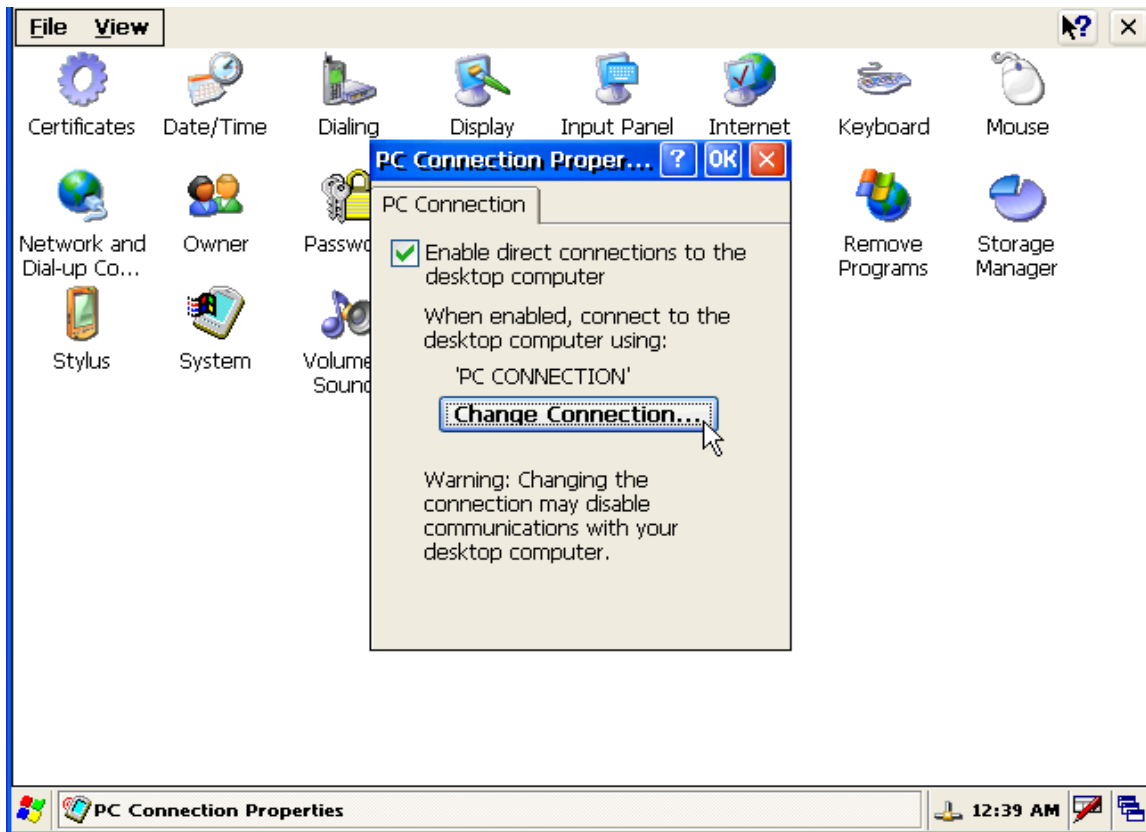
Step6: Run Start-->Settings-->Control Panel



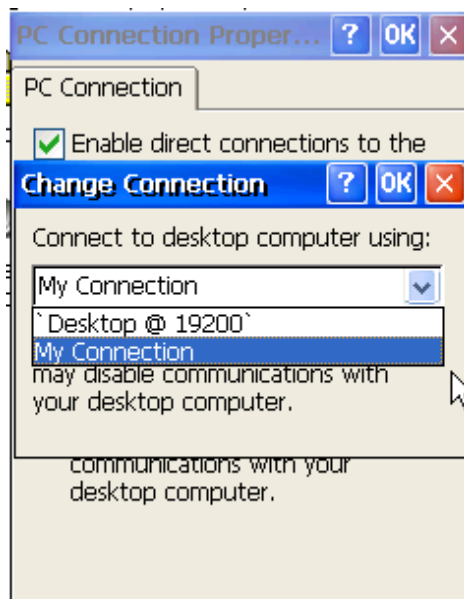
Step7: Click “PC connection” icon



Step8: Check “Enable direct connections to the desktop computer” and Click Change connection



Step9: Change to new connection “My Connection”

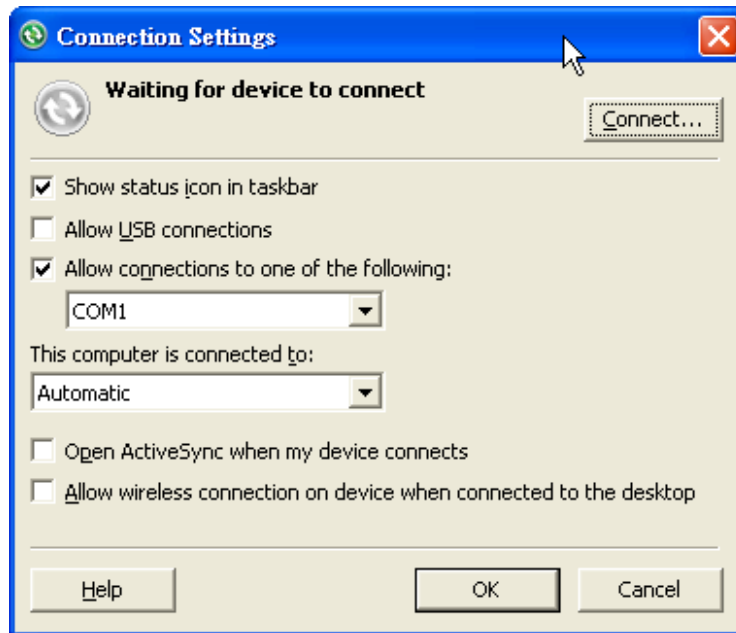


Set ActiveSync on PC site

Step1: Install Microsoft ActiveSync software on PC [Please adopts version 3.7 or later]. (Using ActiveSync 4.5 as an example)

Step2: Run ActiveSync

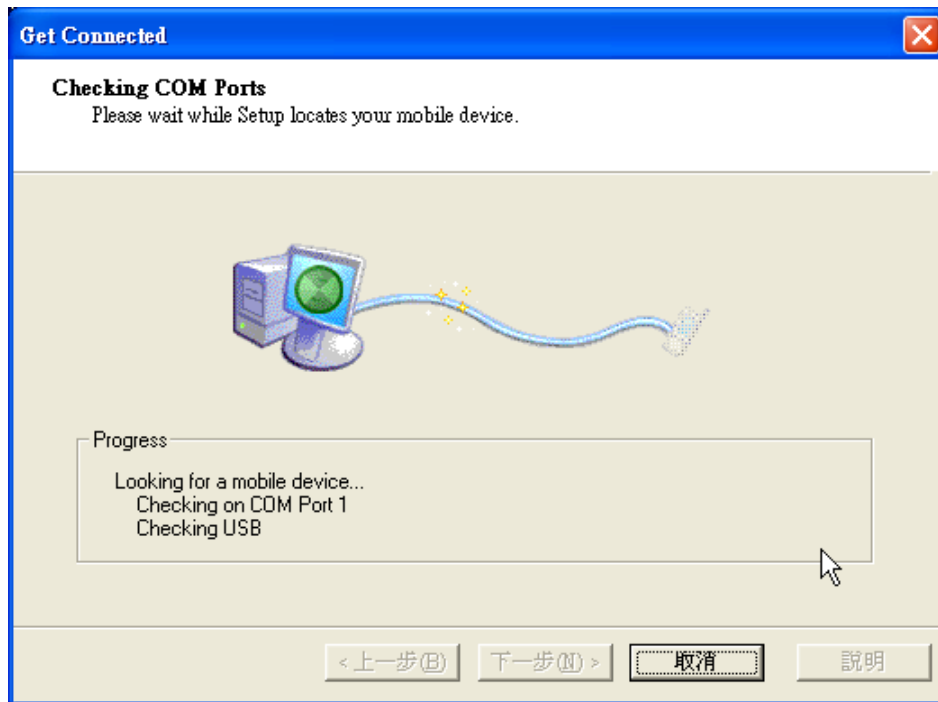
Step3: Check “Allow connections to one of the following:” and click connect button



Step4: Click Next button



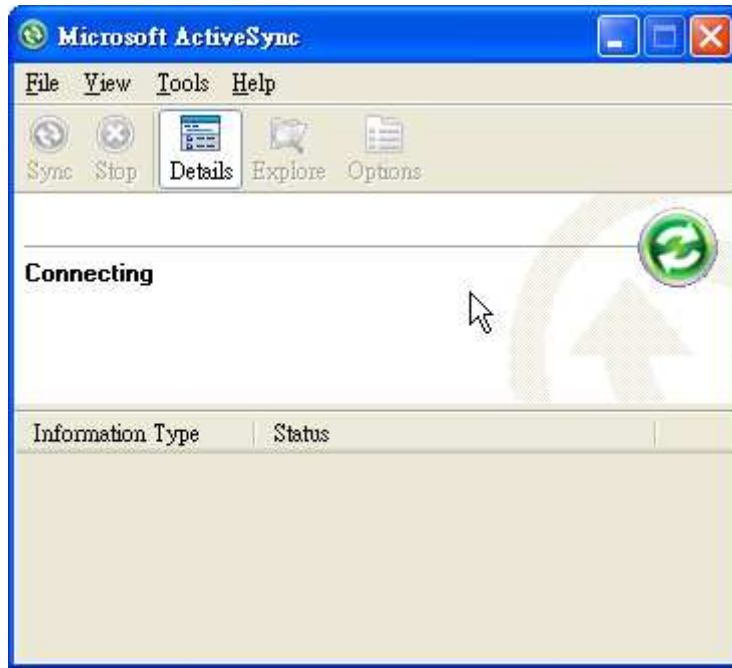
Step5: Start to check COM port



Step6: After Active Sync building up, Active Sync ICON will turn to green. 

Step7: On the PC, ActiveSync will request the Partnership type, Select Yes to set up a partnership.





How to Use FTP/Telnet authentication

Add a User for FTP and Telnet

Step1: Run WinPAC utility and Click “FTP Setting”-> Login Tab

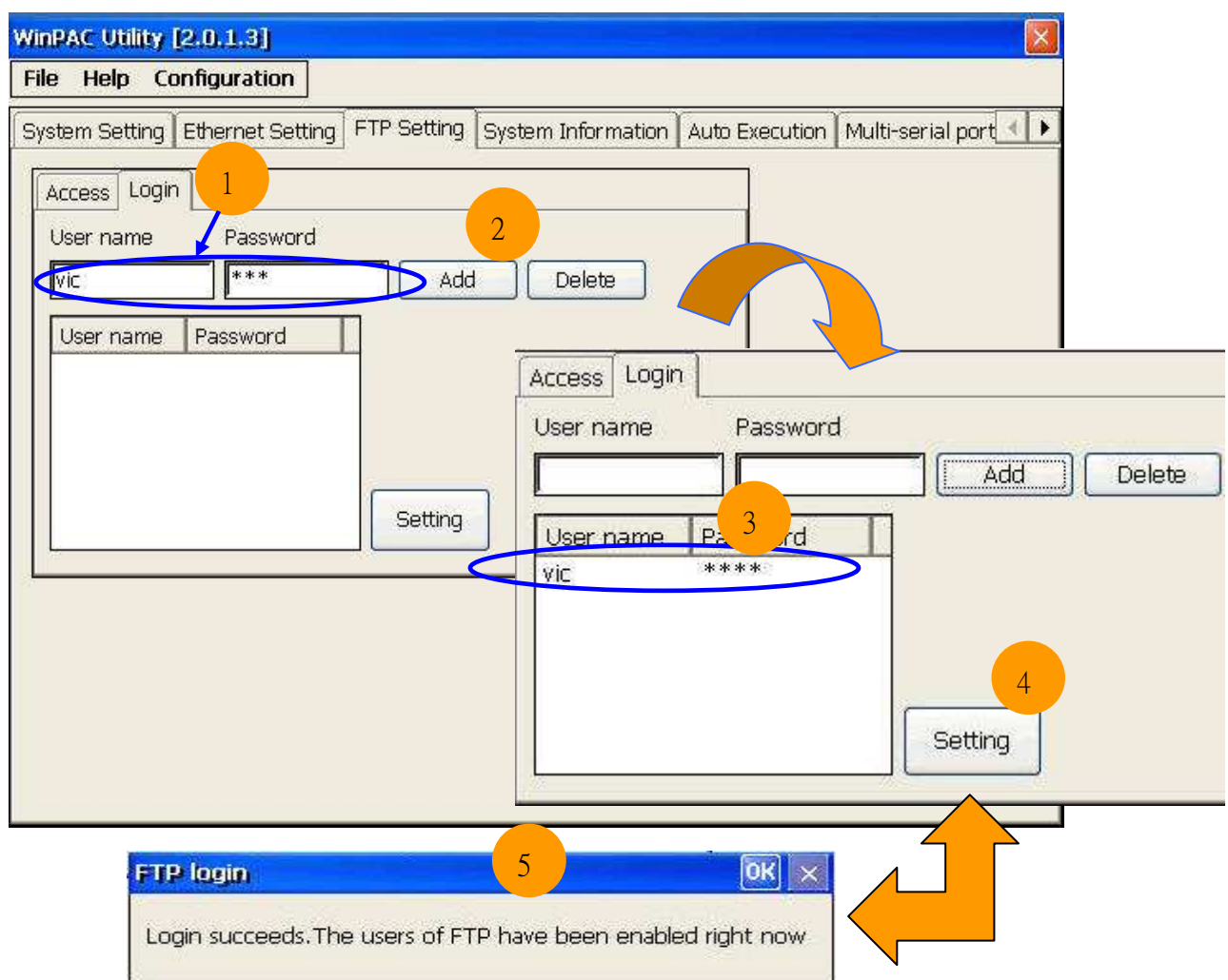
Step2: Type the user name and password. (The length of input characters must be less than 20.)

Step3: Press “Add” button.

Step4: The new user name and password will be added in.

Step5: Press “Setting” button to store and set.

Step6: Show a dialog box to tell login succeeds



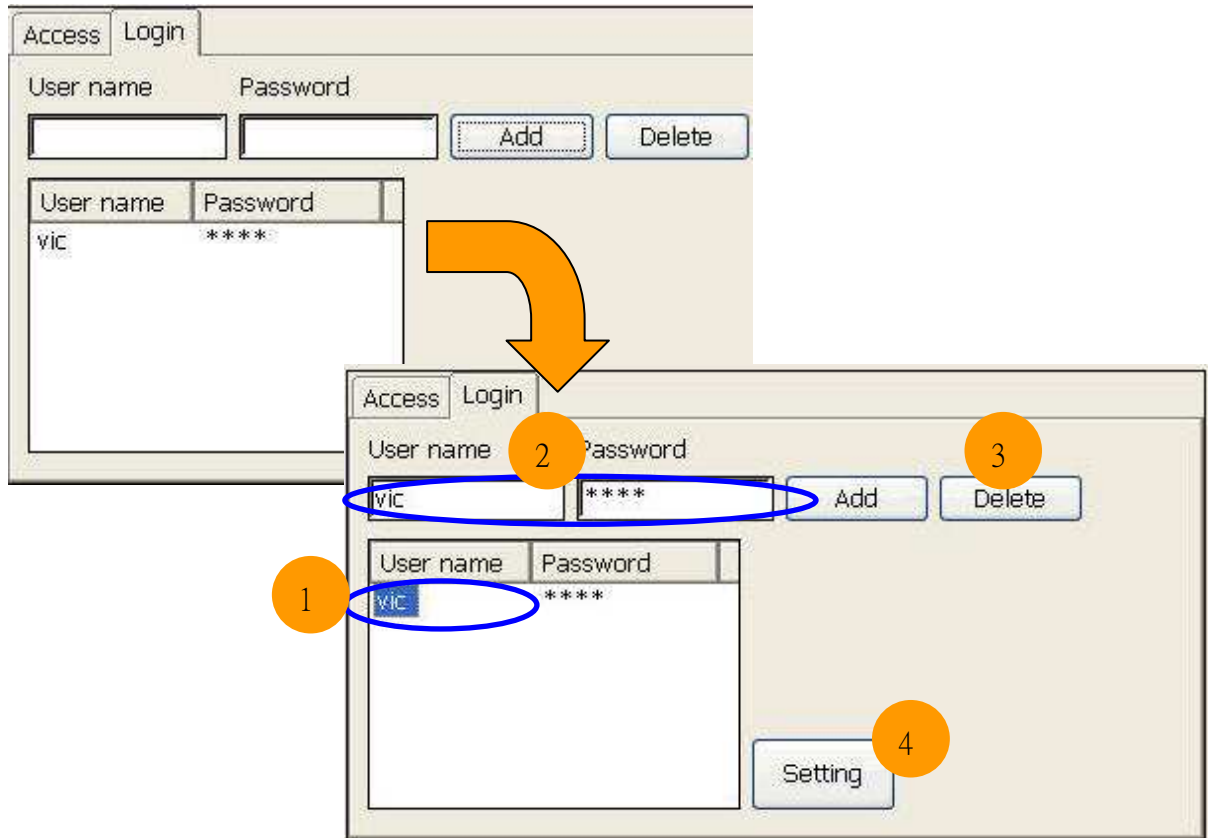
Delete a User for FTP and Telnet

Step1: Click any user in the “User name” field.

Step2: Display the user name that is chosen.

Step3: Press “Delete” button to delete the user name.

Step4: Store the setting.



Use Telnet to Login WinPAC from PC

Step1: Start → Run on PC.

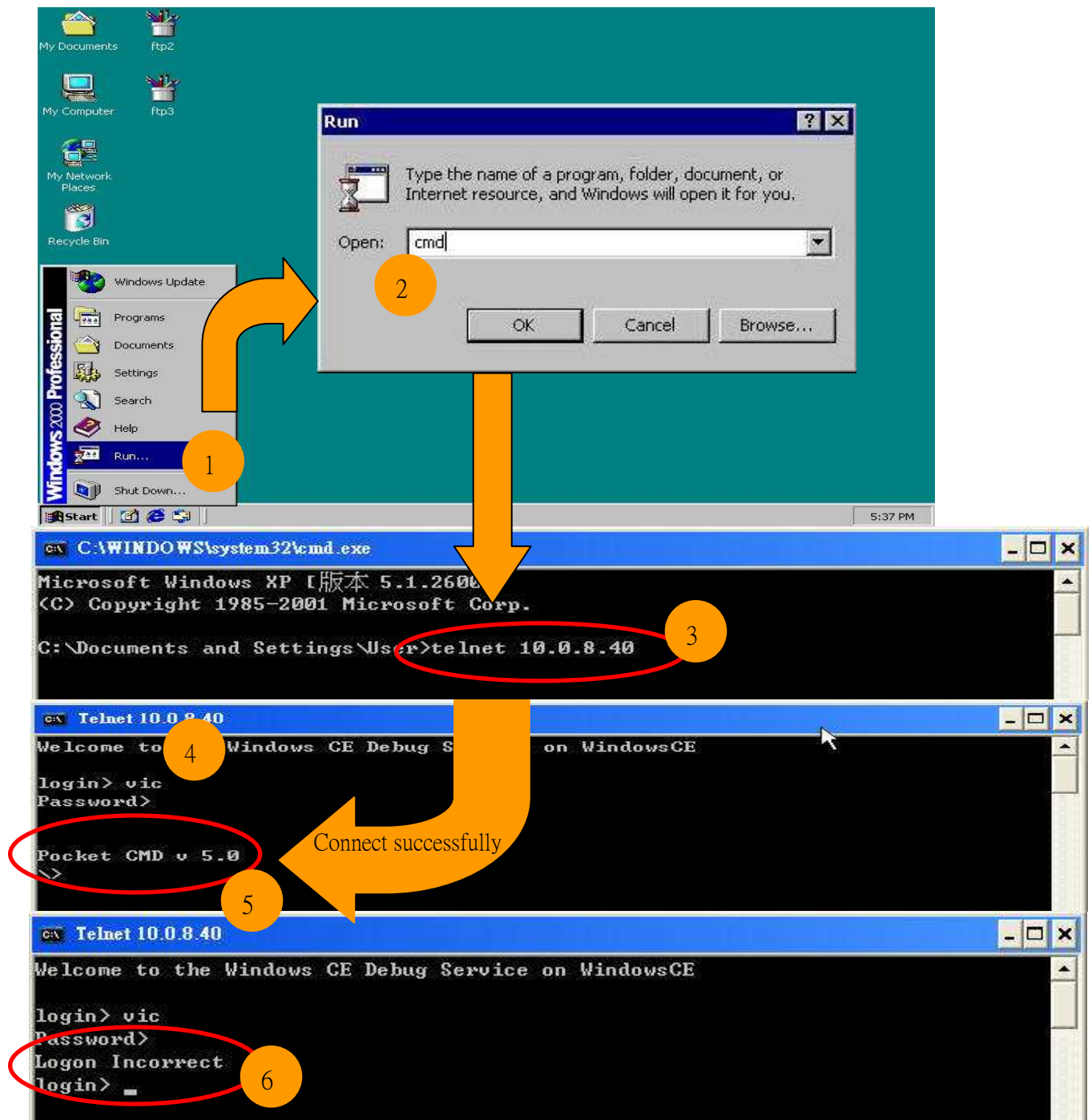
Step2: Type “cmd “to call a console window.

Step3: Type “telnet (IP address)” to connect to WinPAC.

Step4: If connection operation succeeds, type user name and password to login.

Step5: Login successfully.

Step6: Login unsuccessfully.



Use FTP to Login WinPAC from PC

On WinPAC side:

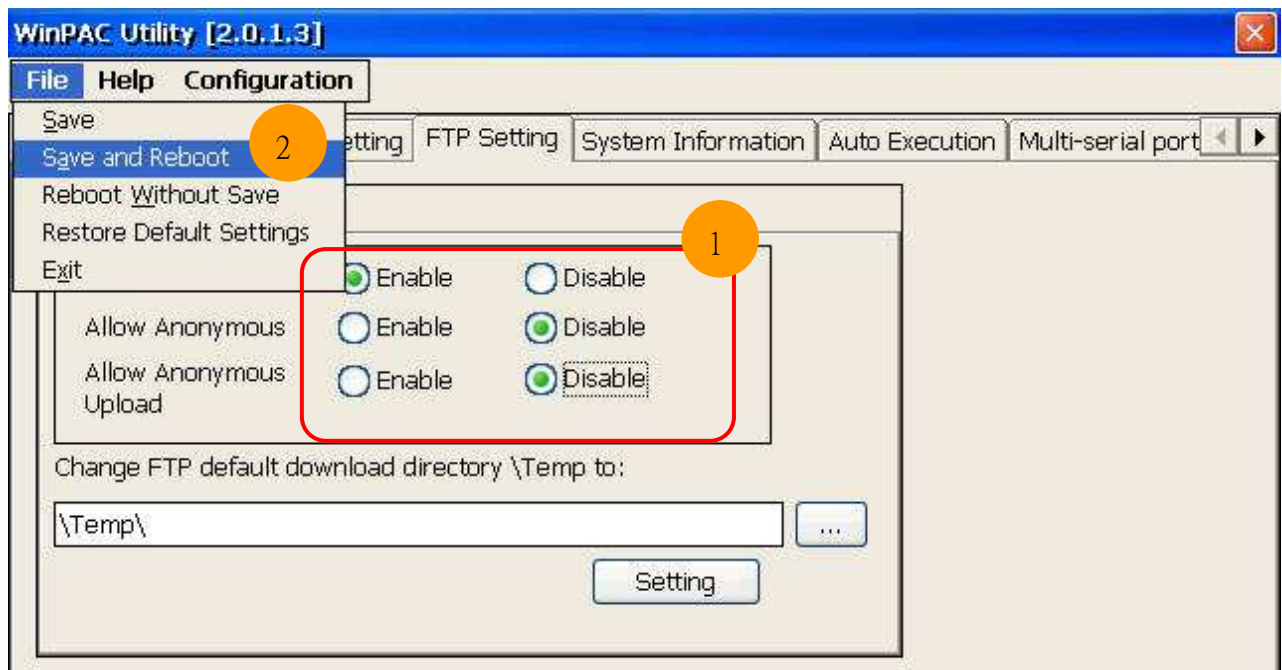
Step1: Set FTP in the WinPAC Utility.

FTP: Enable.

Allow Anonymous: Disable.

Allow Anonymous Upload: Disable.

Step2: File → Save and Reboot.

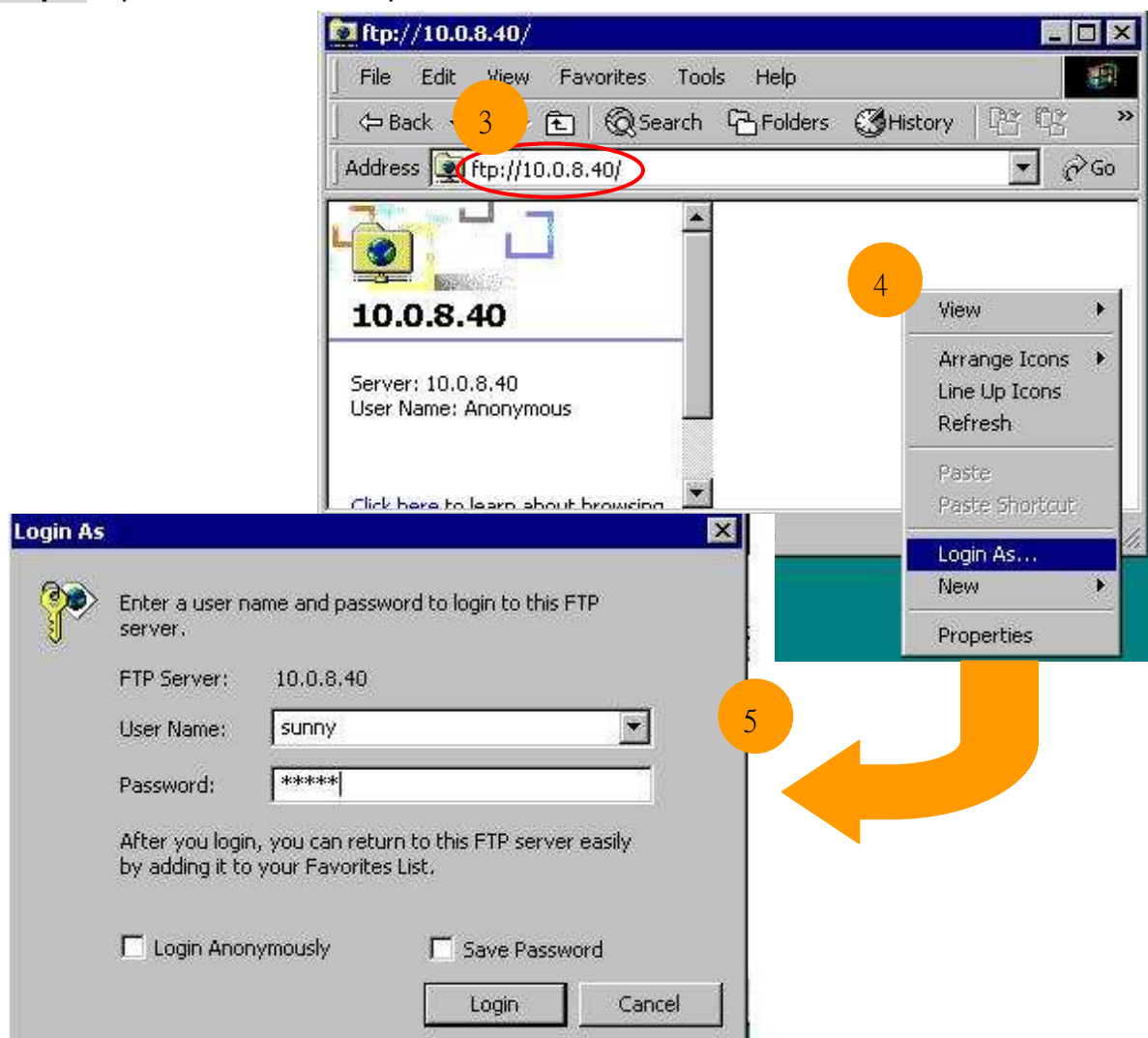


On PC side:

Step3: On PC, open a windows and type “ftp:// (IP address)” and press “Enter”.

Step4: Click right mouse button and select “Login As...”.

Step5: Input user name and password.



How to update Eboot and OS

Refer to [E.1. How to upgrade for WinPAC-8000 on WinPAC_8000_user_manual_v1.x.pdf](#) for more detail to updating the Eboot and OS.

Important Notes

- ▶ We recommend that you use E.1.1 How to update the Boot Loader and the WinPAC-8000 OS image from files method for quick and easy to update the WinPAC-8000 OS image
- ▶ Use E.1.2. How to update the WinPAC-8000 OS image from eshell to update the OS image. Please follow the manual to update the OS step by step (Don't forget to run the step 7)

OS image file updated

- ▶ New OS image file for **Updating the Boot Loader and the WinPAC-8000 OS image from files**

WP **pppp** - **YYYYMMDD** - **Ver** **X.X.X.X** - **XX** .exe

| Product Name | Release Date | Software | Language |
|----------------|--------------|---------------|-------------------------|
| Product Series | YYYY- Years | Major Version | en- English |
| I/O Slot | MM- Month | Minor Version | tc- Traditional Chinese |
| Hardware | DD- Day | Build Number | sc- Simplified Chinese |
| Software | | Reversion | |

Example: WP8441_20090709_Ver 1.0.0.0_en.exe

- ▶ New OS image file for **updating the WinPAC-8000 OS image from Eshell**

WP **pppp** - **YYYYMMDD** - **Ver** **X.X.X.X** - **XX** .bin

| Product Name | Release Date | Software | Language |
|----------------|--------------|---------------|-------------------------|
| Product Series | YYYY- Years | Major Version | en- English |
| I/O Slot | MM- Month | Minor Version | tc- Traditional Chinese |
| Hardware | DD- Day | Build Number | sc- Simplified Chinese |
| Software | | Reversion | |

Example: WP8441_20090709_Ver 1.0.0.0_en.bin

WinPAC SDK Header files and library files for desktop

WinPACSDK (PAC270_SDK.msi) provided an application developer with the information necessary to develop an EVC or .Net Framework application specifically for WinPAC.

- ▶ WinPACSDK.h is moved to the *C:\Program Files\Windows CE Tools\wce500\PAC270\ICPDAS\Include\ARMV4I* from *C:\Program Files\Windows CE Tools\wce500\PAC270\Include*
- ▶ WinPACSDK.lib is moved to the *C:\Program Files\Windows CE Tools\wce500\PAC270\ICPDAS\Lib\ARMV4I* from *C:\Program Files\Windows CE Tools\wce500\PAC270\Lib*

[Warning]

After executed the .msi program, it will show a dialog ask you where do you want to install. We recommend you use the default setting, if you want to change the location, you should check your evc link path match up you setting.

[Description]

This latest version (PAC270_SDK_20091006.msi) includes following files:

–WinpacSDK.lib: **v1.0.9.3**

The file will be copied to *c:\Program Files\Windows CE Tools\wce500\PAC270\ICPDAS\Lib\Armv4i*

–WinpacSDK.h: **v1.0.9.3**

The file will be copied to *c:\Program Files\Windows CE Tools\wce500\PAC270\ICPDAS\Include\Armv4i*