


# WP-8X4X OS Release Notes,

## Version 1.6.0.1 [August 15, 2011]

Key OS Features:

Features	Supported	Description
OS Language	Yes	WP-8x4x-EN: Multi-language <ul style="list-style-type: none"> <li>● English</li> <li>● German</li> <li>● Russian</li> <li>● French</li> <li>● Spanish</li> <li>● Italian</li> <li>● Korean</li> </ul> WP-8x4x -SC: Simplified Chinese WP-8x4x -TC: Traditional Chinese
.NET Compact Framework 2.0	Yes	V2.0.7045 for Visual Studio .Net 2005/2008
.NET Compact Framework 3.5		
SQL CE 3.5	Yes	SQL CE 3.5 (3.5.5386.0)
FTP Server	Yes	
HTTP Server	Yes	
Telnet	Yes	
Printer	Yes(PCL 6)	For HP Laser Jet printers using USB and Ethernet (via the network neighborhood)
Touch Panel	Yes	Support for touch panels using the RS-232 and USB interface
Multi-Serial Module 	Yes	i-8112iW (RS-232 *2), i-8114W (RS-232 *4), i-8114iW (RS-232 *4), i-8142iW (RS-485 *2), i-8144iW (RS-485 *4) Max. support for 16 COM ports: (4 slots * 1 module with 4 ports max. =16 ports max.)

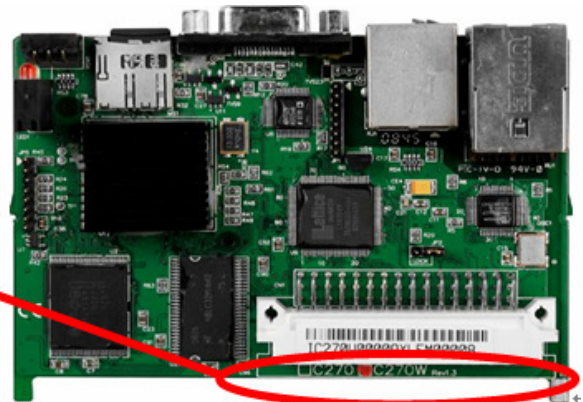
## Software and Hardware Compatibility

Software		Hardware			
OS	Eboot	PCB V1.4	PCB V2.0	PCB V2.4	PCB V2.5
V1.6.0.1 [August 15, 2011]	V1.2.1.0	Yes	Yes	Yes	Yes
V1.5.0.2 [August 03, 2010]	V1.2.0.1	Yes	Yes	Yes	-
V1.5.0.1 [April 15, 2010]	V1.2.0.1	Yes	Yes	Yes	-
V1.4.2.1 [October 22, 2009]	V1.0.6.1	Yes	-	-	-

### Determining the hardware version

CPU Board Version ↴

C270  C270W Rev 1.X ↴



# Table of Contents

OS Version 1.6.0.1 [August 15, 2011] .....4  
Configuring the File (SMB) server.....5  
Changing the User Interface and the Input Method Editor .....9

## OS Version 1.6.0.1 [August 15, 2011]

### Abstract

This update releases the following issues:

- Adds support for .NET Compact Framework 3.5.
- Adds support for File (SMB) server.
- Adds support for the MXIC MX28GL256F Flash chip.
- Adds support for the CPU PXA207M.
- Adds support for the Korean User Interface and Input Method Editor.
- Fixes the bug that causes the System time to reverse or to move ahead by one second after a reboot.
- Improves an issue that caused an auto-run program set in the Auto Execution tab of the WinPAC utility to fail after rebooting, which occurred because the relevant driver of the program is loaded later than the program.

### New Features

- Adds support for .NET Compact Framework 3.5.
- Adds support for File (SMB) server.
- Adds support for the MXIC MX28GL256F Flash chip.
- Adds support for the CPU PXA207M.
- Adds support for the Korean User Interface and Input Method Editor.

### Bugs Fixed

- Fixes the bug that causes the System time to reverse or to move ahead by one second after a reboot.

### Improvements

- Improved an issue that caused an auto-run program set in the Auto Execution tab of the WinPAC utility to fail after rebooting, which occurred because the relevant driver of the program is loaded later than the program.

## Eboot Version 1.2.1.0 [September 27, 2011]

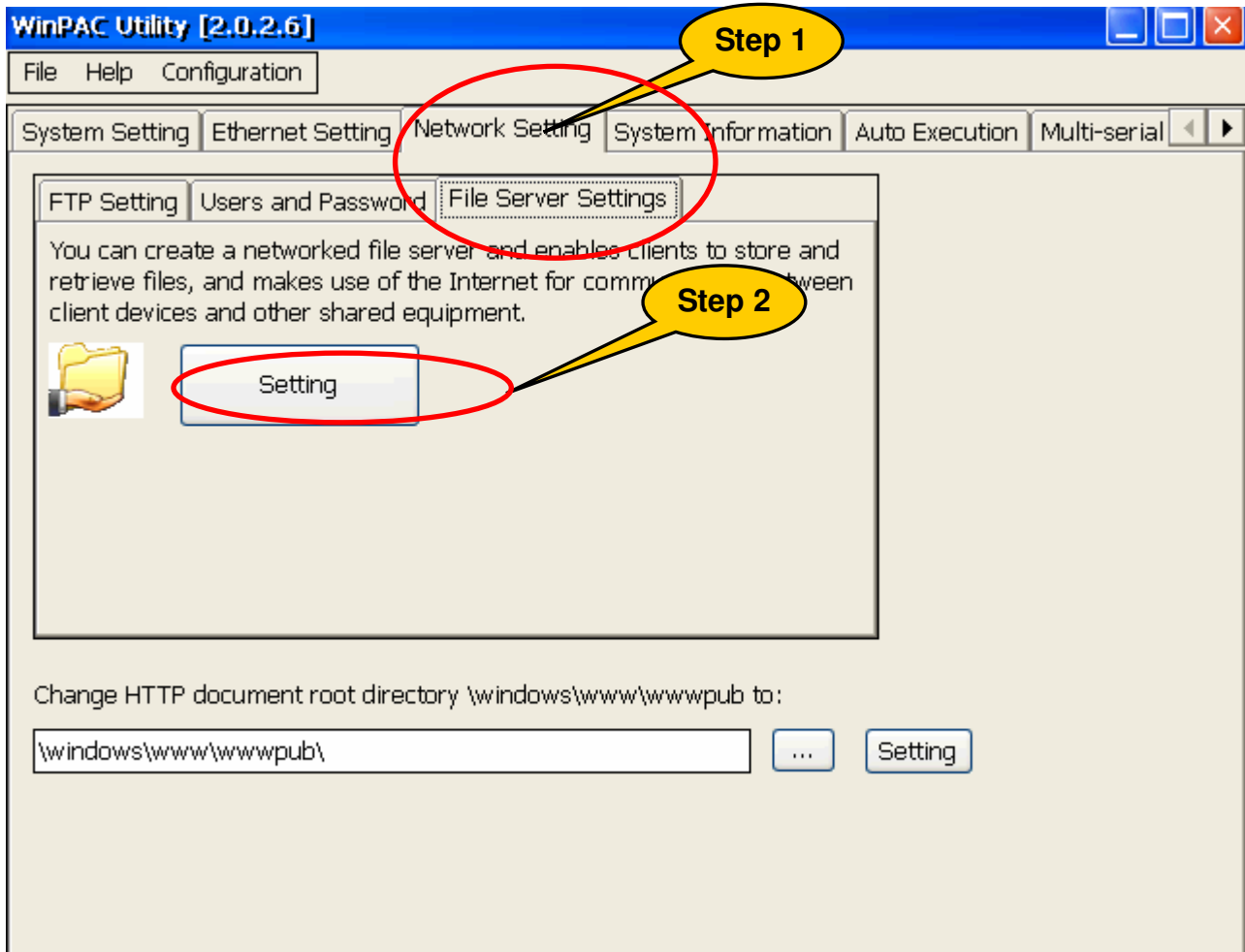
- Adds support for the MXIC MX28GL256F Flash chip.

# Configuring the File (SMB) server

**Note:** V2025 and later of the WinPAC\_utility provides support for the File Server Settings.

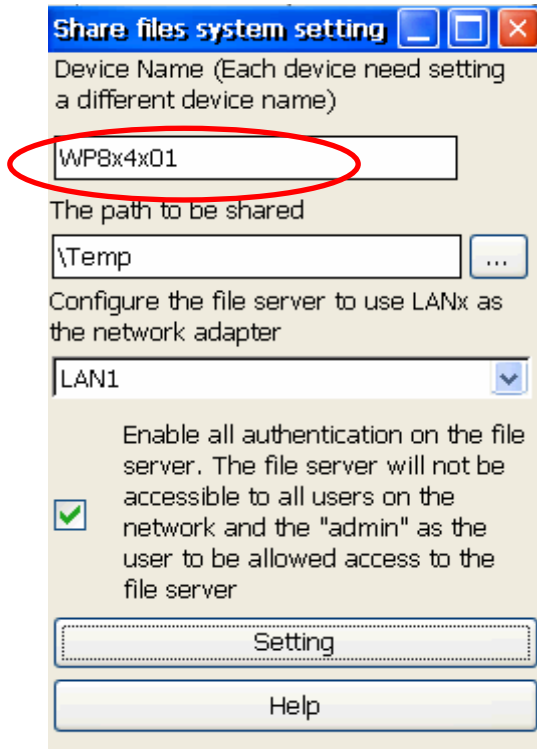
**Step 1:** Execute the WinPAC utility->“Network Setting”->File Server Settings tab.

**Step 2:** Click the “Setting” button.



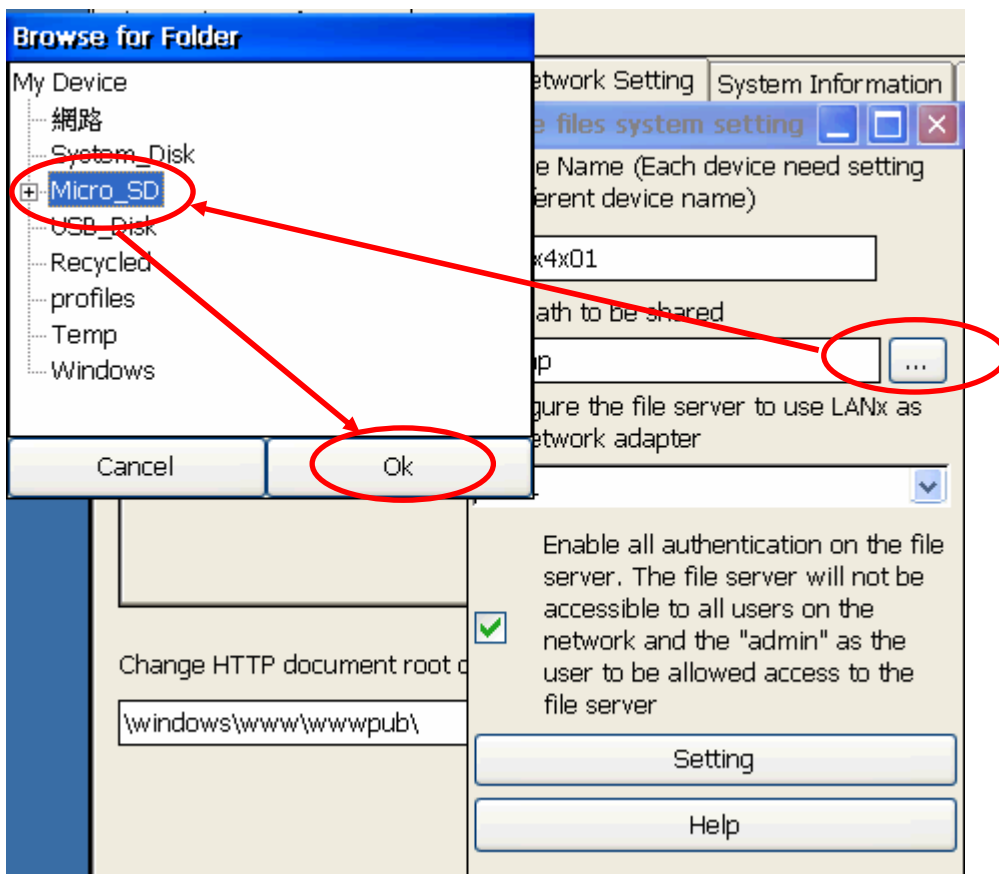
**Step 3:** Enter the device name.

**Note:** If the LAN network contains several devices, ensure that different device names are set for each device.



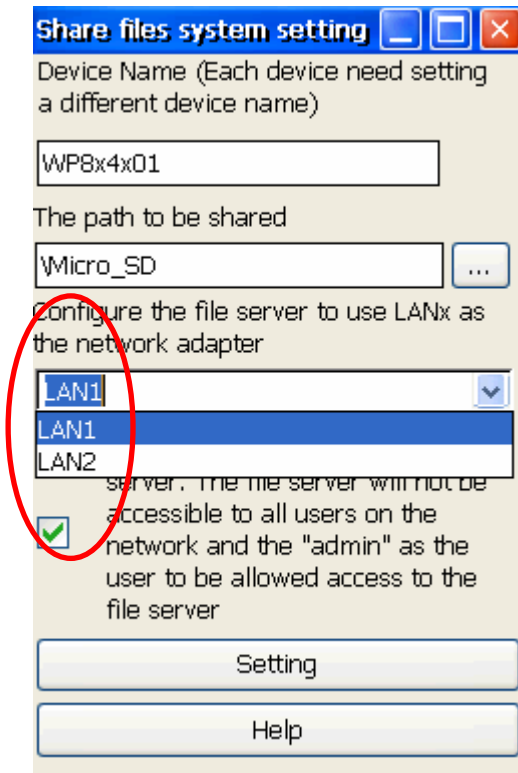
**Step 4:** Specify the share folder then click OK.

**Note:** The name of the share folder must not contain any reserved characters.

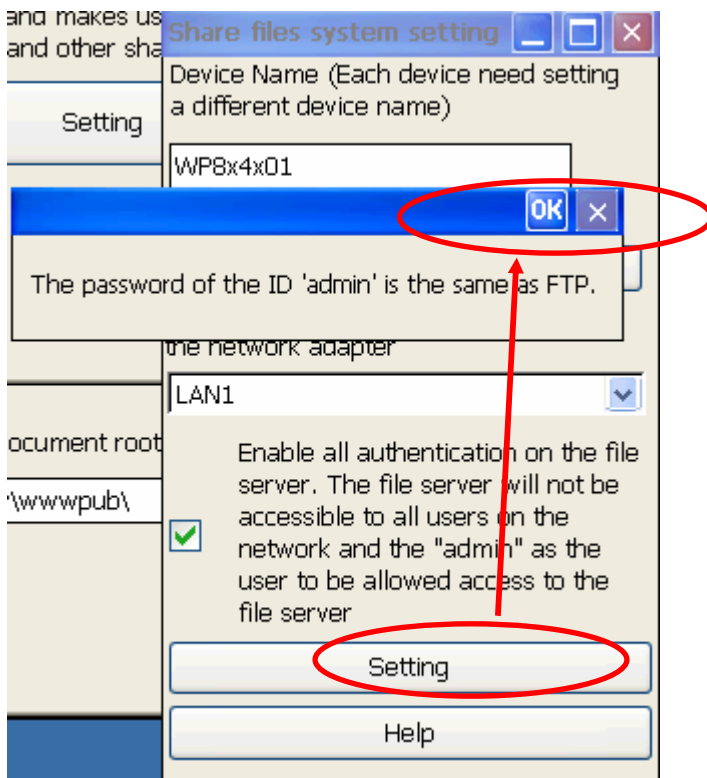


**Step 5:** Choose the LAN adapter to be used as the gateway for the file server. This will allow all users to connect to the file server.

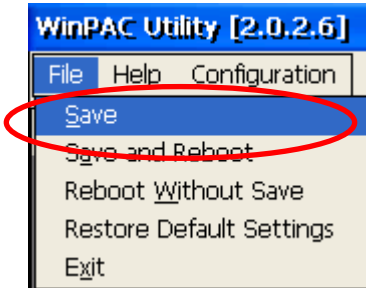
**Note:** The file server and the FTP server use the same ID and password.



**Step 6:** Click the "Set" button.



**Step 7:** Select the “File->save” option from the file menu.



**Step 8:** Enter the “IP address for LAN1” of the device or enter “\\device name” (e.g., WP8x4x01) in the address bar, then enter the ID and password to connect to the file server.

**Note:** If you can not use the “IP address for LAN1” to connect with the network share folder, you can use the “\\device name” to connect to the file server.



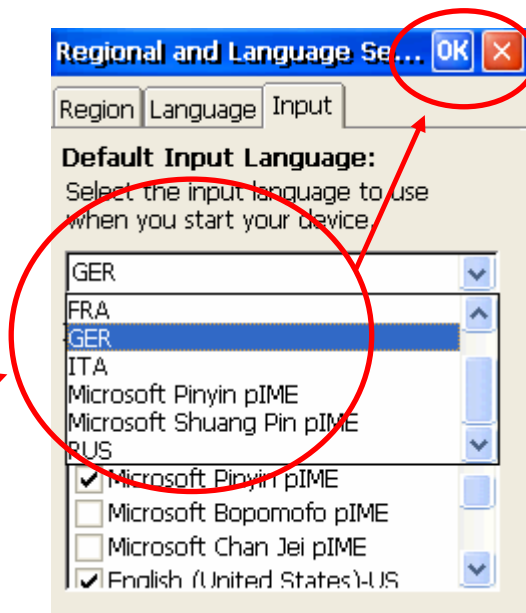
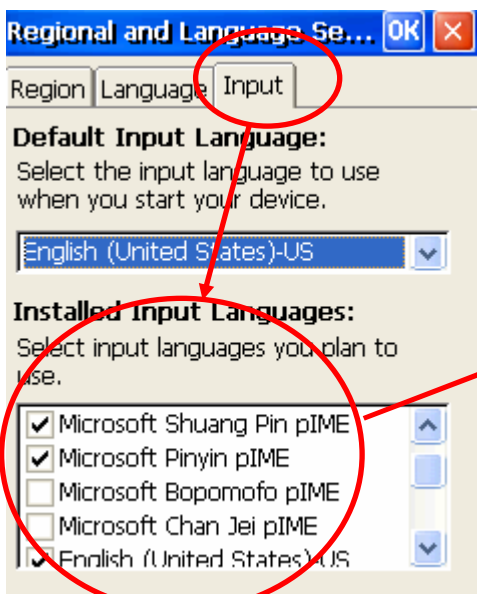


# Changing the User Interface and the Input Method Editor

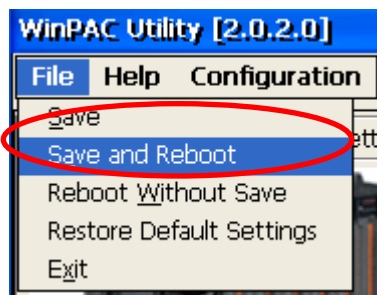
**Step 1:** Double click the Regional Settings icon in the Control Panel and then click the Language tab to select the User Interface Language.



**Step 2:** Click the Input tab and the check boxes for the input language you wish to use, and select the language you wish to use as the default language when you start your device.



**Step 3:** Execute the WinPAC\_utility from the desktop and select the “Save and Reboot” option.



## OS version and supported languages

OS version		English	German	Russian	French	Spanish	Italian	Korean	Simplified Chinese	Traditional Chinese
<i>V1502 and earlier</i>	EN	△	○	○	○	○	○			
	TC	○								△
	SC	○							△	
<i>V1601 and later</i>	EN	△	○	○	○	○	○	○		
	TC	○								△
	SC	○							△	

△ : The default OS user interface language.

○ : The OS supports this language for both the UI and the IME.