


WP-5000 CE 5.0 OS 1.3.1.0 Release Notes

Release Date: 09/03/2013

Key Features:

Features	Supported	Description
Windows CE 5.0 Core OS	Yes	
OS Language	Yes	WP-5000-EN: Multi-language <ul style="list-style-type: none">- English- German- Russian- French- Spanish- Italian- Korean WP-5000 -SC: Simplified Chinese WP-5000 -TC: Traditional Chinese
.NET Compact Framework 2.0 .NET Compact Framework 3.5	Yes	V2.0.7045 for Visual Studio .Net 2005/2008 V3.5.7283.0 for Visual Studio .Net 2008
SQL CE 3.5	Yes	SQL CE 3.5 (3.5.5386.0)
FTP Server	Yes	
HTTP Server	Yes	
Telnet	Yes	
Printer	Yes(PCL 6)	Support for HP Laser Jet printers with USB and Ethernet interfaces
Display Resolution	Yes	800 * 600, 640 * 480
Touch Panel	Yes	Support for touch panels using the RS-232 and USB interfaces
XW board 	Yes	Support modules: <ul style="list-style-type: none">XW107 (8 DI, 8 DO)XW506 (RS-232 * 6)XW507 (6 DI, 6 DO, RS-485 * 1)XW509 (4 DI, 4 DO, RS-232 * 2)XW511i (RS-485 * 4)XW514 (RS-485 * 8)

Software and Hardware Compatibility

Software		Hardware		
OS	Eboot	V1.6	V2.21	V2.4
V1.3.1.0 [09/03/2013]	V1.2.0.0	Yes	Yes	Yes
V1.3.0.0 [02/06/2013]	V1.2.0.0	Yes	Yes	Yes
V1.1.1.0 [05/29/2012]	V1.2.0.0	Yes	Yes	(* Note 1)
V1.0.0.0 [03/22/2011]	V1.0.0.0	Yes	Yes	-

Note1:

OS 1.1.1.0 works well on hardware v2.4 except support for COM 2 and COM 3.

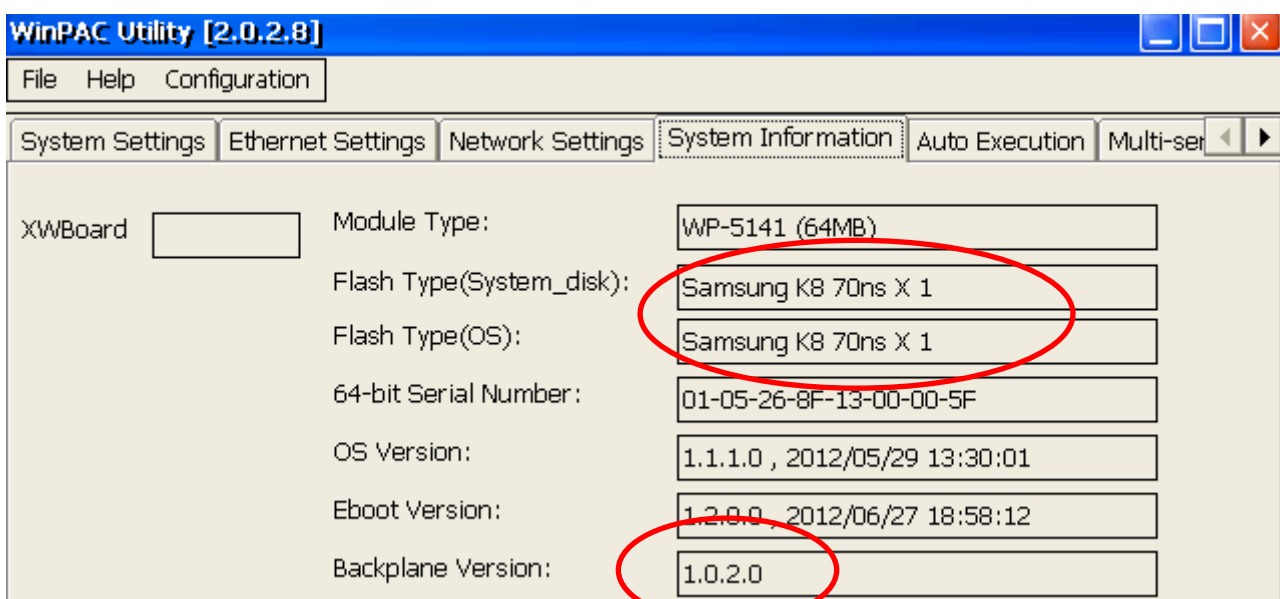
Note2:

1. V1.6 hardware is equipped with the PXA270 CPU and Samsung K8 70ns chip.
2. V2.21 hardware is equipped with the PXA270M CPU and MXIC MX29GL256F chip.
3. V2.4 hardware is equipped with the PXA270M CPU and MXIC MX29GL256F chip, while COM 2 and COM3 use the 16C950 chip.

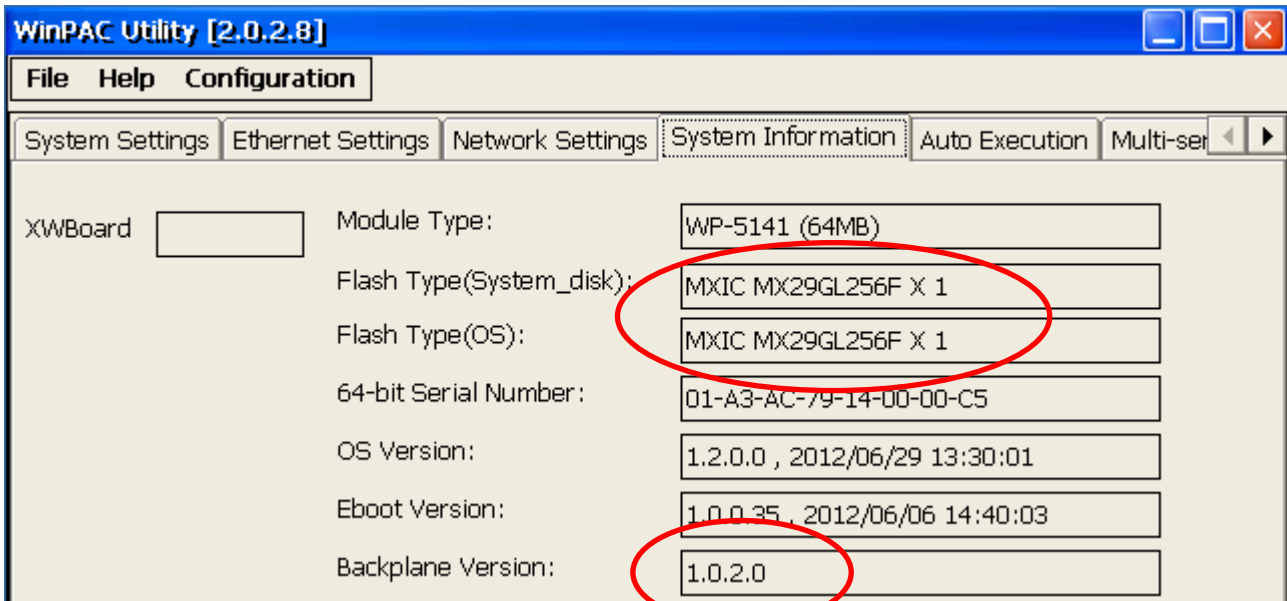
How to determine the Hardware version number

From the information displayed on the “System information” tag in WinPAC Utility (Ver. 2.0.2.8 and later), you can determine the hardware version number as below:

Hardware v.1.6: Samsung K8 70ns + Backplane 1.0.2.0



Hardware V2.21: MXIC MX29GL256F + Backplane 1.0.2.0



Hardware V2.4: MXIC MX29GL256F + Backplane 1.0.82.0

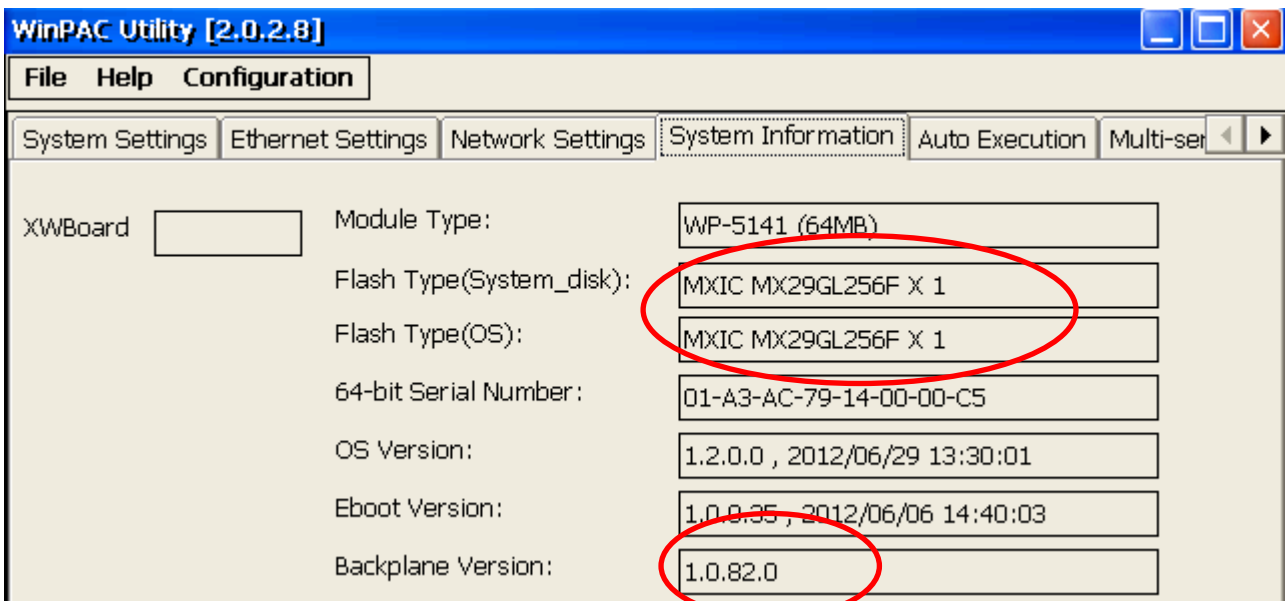


Table of Contents

WP-5000 OS 1.3.1.0-Release Notes [09/03/2013]5

WP-5000 OS 1.3.1.0 - Release Notes [09/03/2013]

Abstract

This release fixes an issue where the CPU usage may rise to 100% after a user inserted and then removed a USB disk more than eight times; amends a problem that the micro SD card sometimes was not mounted after booting. It also solves a problem of that using multiple Modbus connections in ISaGRAF sometimes caused the LAN1 Ethernet connection to malfunction.

Improvements and Bug Fixes

- Fixed an issue in the USB driver that caused the CPU usage to rise to 100% when a user inserted and then removed a USB Disk more than 8 times.
- Modified the driver for the micro SD card to solve a problem where the micro SD card sometimes was not mounted after booting.
- Update the Ethernet LAN1 driver to prevent a problem of LAN1 Ethernet connection malfunction caused by using multiple Modbus connections in ISaGRAF.
- Solved an issue of the icon for Ethernet connection status in the taskbar may display incorrect status when the WP-5000 controller rebooted with LAN1 or LAN2 Ethernet connection was disabled.

Eboot 1.2.0.0 [06/27/2012]

- No updates

Software and Hardware Compatibility

Software		Hardware		
OS	Eboot	V1.6	V2.21	V2.4
V1.3.1.0 [09/03/2013]	V1.2.0.0	Yes	Yes	Yes

WinPAC Utility and WinPAC SDK

- PACSDK DLL V.4.2.3.7 (Released on: 05/30/2013)
- WinPAC Utility V.2.1.0.4 (Released on: 12/21/2012)