


WP-5000 CE 5.0 OS 1.3.0.0 Release Notes

Release Date: 02/26/2013

Key Features:

Features	Supported	Description
Windows CE 5.0 Core OS	Yes	
OS Language	Yes	WP-5000-EN: Multi-language <ul style="list-style-type: none"> - English - German - Russian - French - Spanish - Italian - Korean WP-5000 -SC: Simplified Chinese WP-5000 -TC: Traditional Chinese
.NET Compact Framework 2.0 .NET Compact Framework 3.5	Yes	V2.0.7045 for Visual Studio .Net 2005/2008 V3.5.7283.0 for Visual Studio .Net 2008
SQL CE 3.5	Yes	SQL CE 3.5 (3.5.5386.0)
FTP Server	Yes	
HTTP Server	Yes	
Telnet	Yes	
Printer	Yes(PCL 6)	Support for HP Laser Jet printers with USB and Ethernet interfaces
Display Resolution	Yes	800 * 600, 640 * 480
Touch Panel	Yes	Support for touch panels using the RS-232 and USB interfaces
XW board 	Yes	Support modules: <ul style="list-style-type: none"> XW107 (8 DI, 8 DO) XW506 (RS-232 * 6) XW507 (6 DI, 6 DO, RS-485 * 1) XW509 (4 DI, 4 DO, RS-232 * 2) XW511i (RS-485 * 4) XW514 (RS-485 * 8)

Software and Hardware Compatibility

Software		Hardware		
OS	Eboot	V1.6	V2.21	V2.4
V1.3.0.0[12/04/2012]	V1.2.0.0	Yes	Yes	Yes
V1.1.1.0[05/29/2012]	V1.2.0.0	Yes	Yes	(* Note 1)
V1.0.0.0[03/22/2011]	V1.0.0.0	Yes	Yes	-

Note1:

OS 1.1.1.0 works well on hardware v2.4 except support for COM 2 and COM 3.

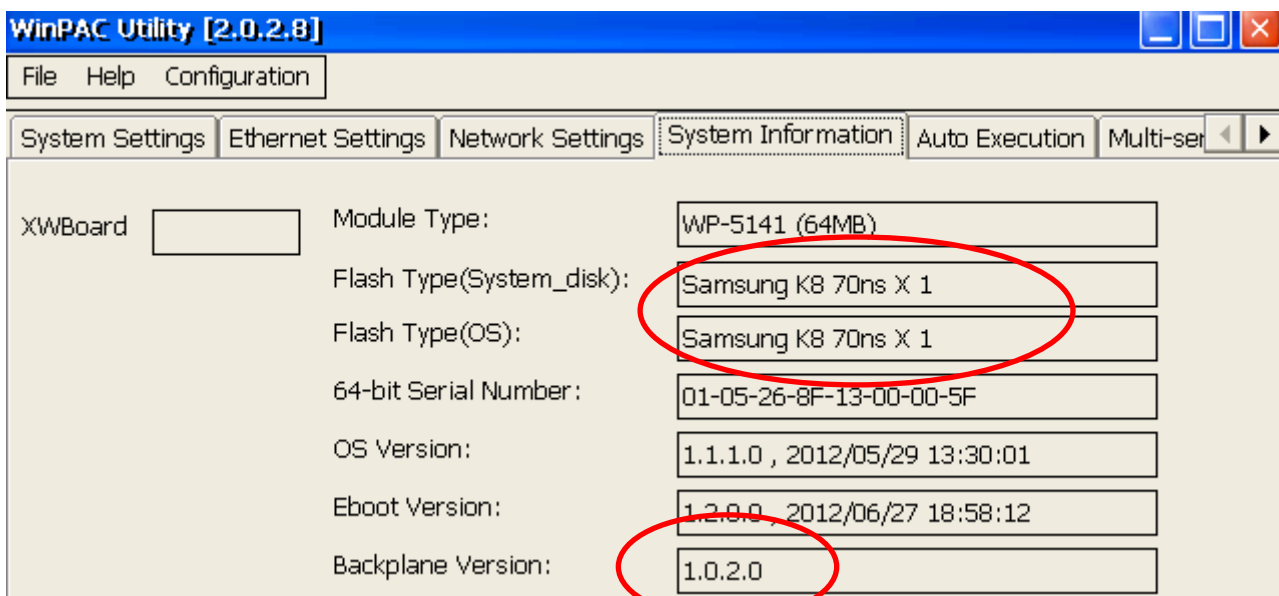
Note2:

1. V1.6 hardware is equipped with the PXA270 CPU and Samsung K8 70ns chip.
2. V2.21 hardware is equipped with the PXA270M CPU and MXIC MX29GL256F chip.
3. V2.4 hardware is equipped with the PXA270M CPU and MXIC MX29GL256F chip, while COM 2 and COM3 use the 16C950 chip.

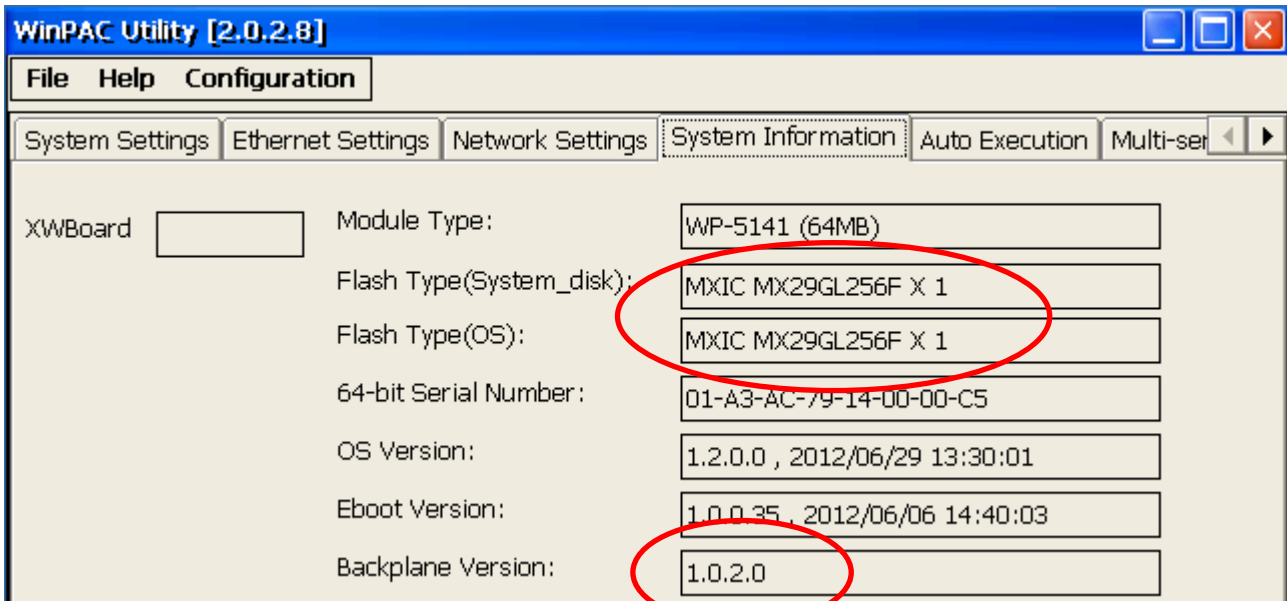
How to determine the Hardware version number

From the information displayed on the “System information” tag in WinPAC Utility (Ver. 2.0.2.8 and later), you can determine the hardware version number as below:

Hardware v.1.6: Samsung K8 70ns + Backplane 1.0.2.0



Hardware V2.21: MXIC MX29GL256F + Backplane 1.0.2.0



Hardware V2.4: MXIC MX29GL256F + Backplane 1.0.82.0

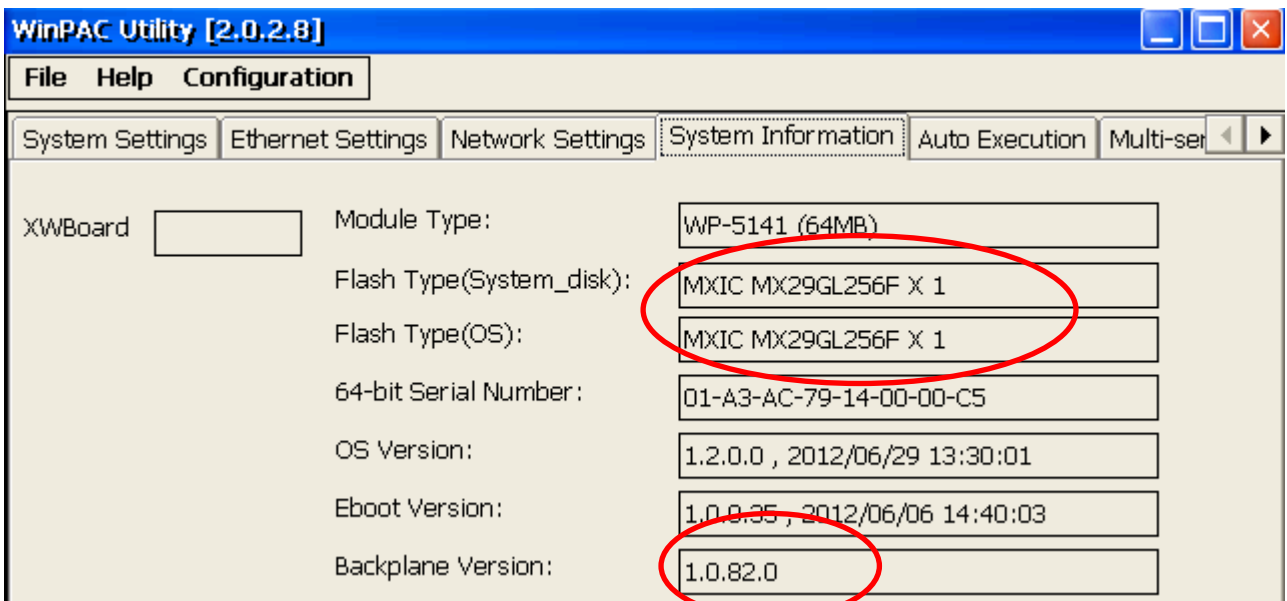


Table of Contents

WP-5000 OS 1.3.0.0-Release Notes5
How to Add a PPPoE Dial-up Connection6

WP-5000 OS 1.3.0.0-Release Notes

Abstract

This release adds support for PPPoE protocol which could be used to connect to an ADSL network; improves the system_disk driver to extend the useful life of the system_disk and resolve the problems that the files may not be written to system_disk, or maybe disappeared if the system rebooted when the system_disk was defragmenting in the background. An error with the system may crash caused by all COM ports (including COM ports on XW506, XW507, XW509, XW511i and XW514) communicating simultaneously has been fixed. The problem where MMTIMER sometimes wouldn't work has also been solved.

New Features

- Added support for "PPPoE" dial-up, which can be used on an ADSL connection.
- Added supporting the hardware V2.4.

Bug Fixes and Improvements

- Resolved the following issues caused by the system was rebooted when the system_disk was defragmenting in the background:
 - The files may disappeared in the folder of the system_disk
 - The files couldn't be written or copied to the system_disk
 - The WP-5000 may not boot
- Increased the system_disk read/write speed and extended the useful life of the system_disk.
- Fixed an error with the driver for RS-232, RS-422, RS-485 expansion XW board (XW506, XW507, XW509, XW511i and XW514) that sometimes the system crash caused by all COM ports were communicating at the same time.
- Fixed the problem where MMTIMER sometimes wouldn't work.

Eboot 1.2.0.0 [06/27/2012]

- No update

Software and Hardware Compatibility

Software		Hardware		
OS	Eboot	V1.6	V2.21	V2.4
V1.3.0.0[12/04/2012]	V1.2.0.0	Yes	Yes	Yes

WinPAC Utility and WinPAC SDK

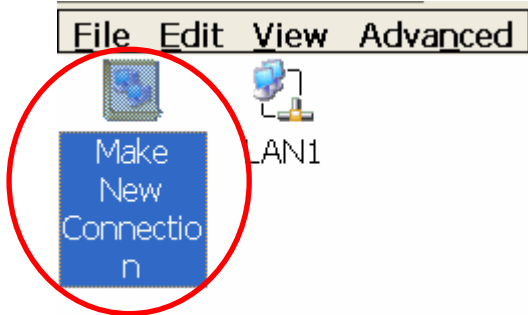
- PACSDK DLL Version 4.2.2.5 (11/21/2012)
- WinPAC Utility Version 2.1.0.4 (03/04/2013)

How to Add a PPPoE Dial-up Connection

Step 1: Open the Network settings by clicking "Settings" >> "Control Panel" and then double-click the "Network and Dial-up connections" icon.



Step 2: Double-click the "Make New Connection" icon to create a new connection.



Step 3: In the "Make New Connection" dialog box, enter a name for the connection and select the "PPP over Ethernet (PPPoE)" option as the connection type, and then click the "Next" button.

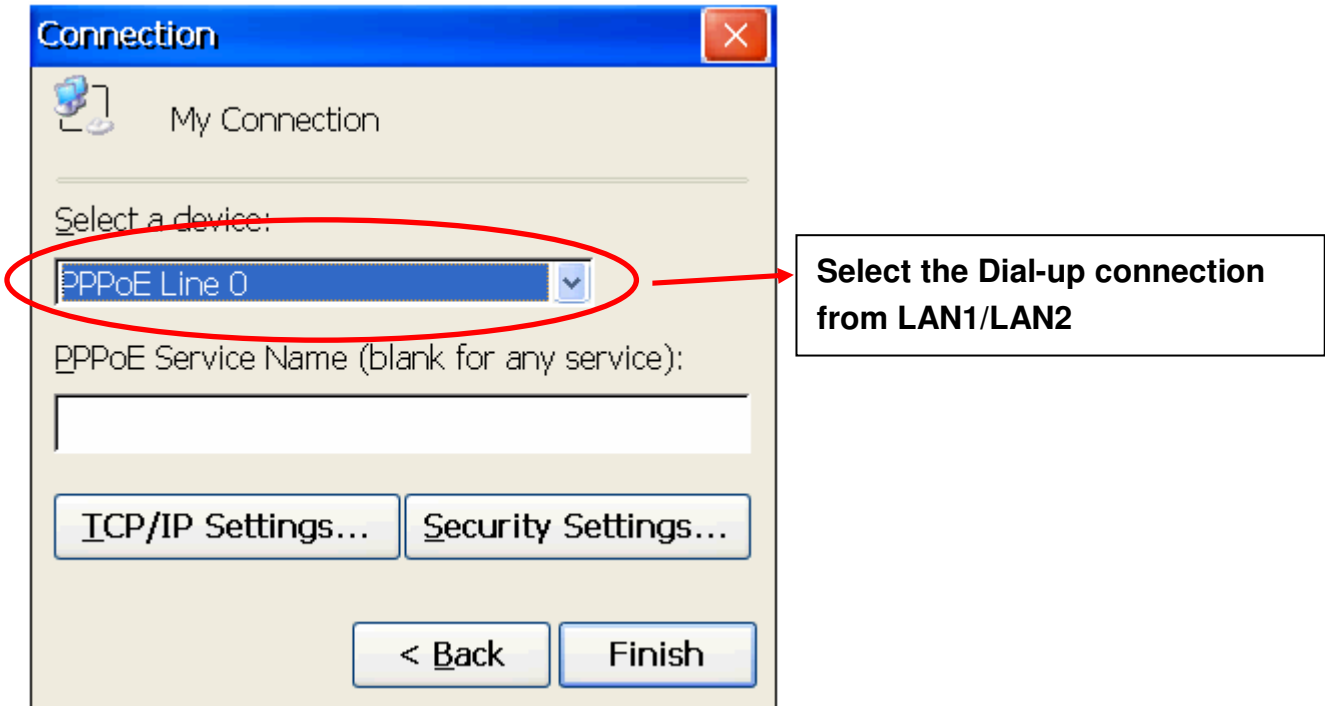
A screenshot of the "Make New Connection" dialog box. The text "Type a name for the connection:" is followed by a text box containing "My Connection". Below this, "Select the connection type:" is followed by radio buttons for "Dial-Up Connection", "Direct Connection", "Virtual Private Network (PPTP)", "Virtual Private Network (L2TP)", and "PPP over Ethernet [PPPoE]". The "PPP over Ethernet [PPPoE]" option is selected and circled in red. At the bottom, there are "< Back" and "Next >" buttons. The "Next >" button is also circled in red. Three callout boxes on the right provide instructions: "1. Enter a name for the connection" points to the text box; "2. Select 'PPP over Ethernet'" points to the selected radio button; "3. Click the 'Next' button" points to the "Next >" button.

1. Enter a name for the connection

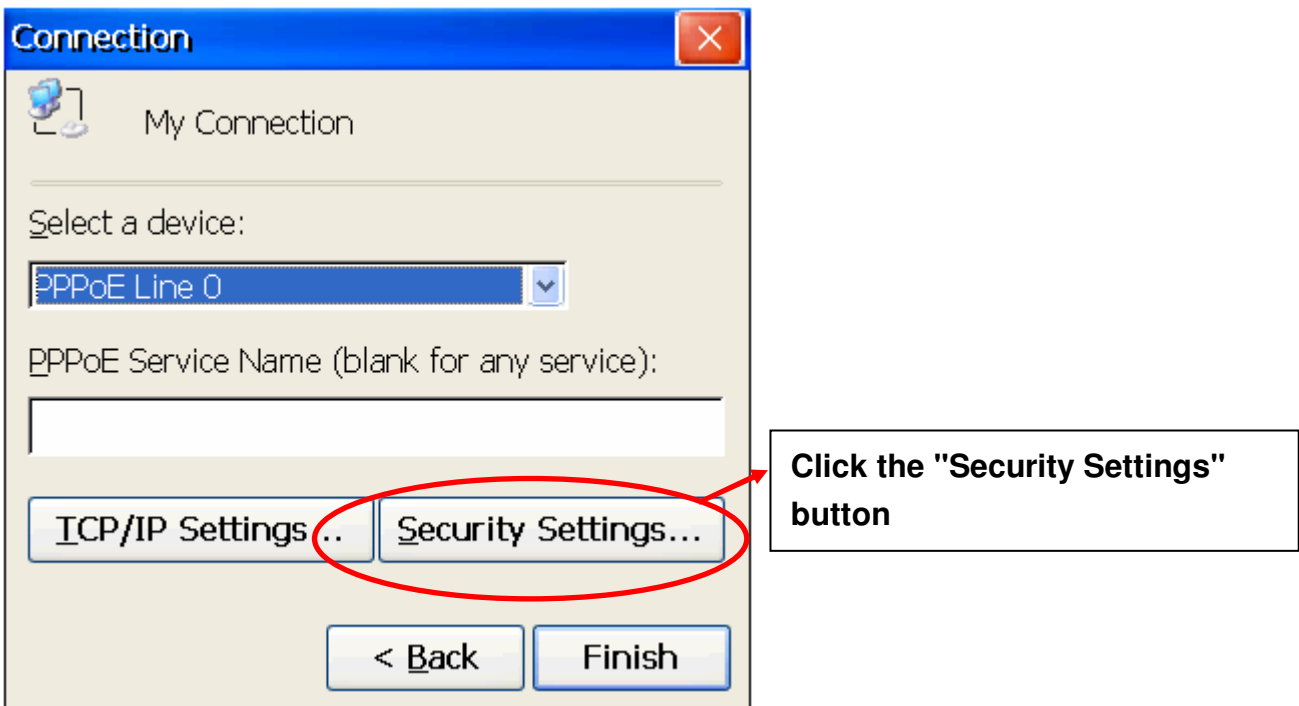
2. Select "PPP over Ethernet"

3. Click the "Next" button

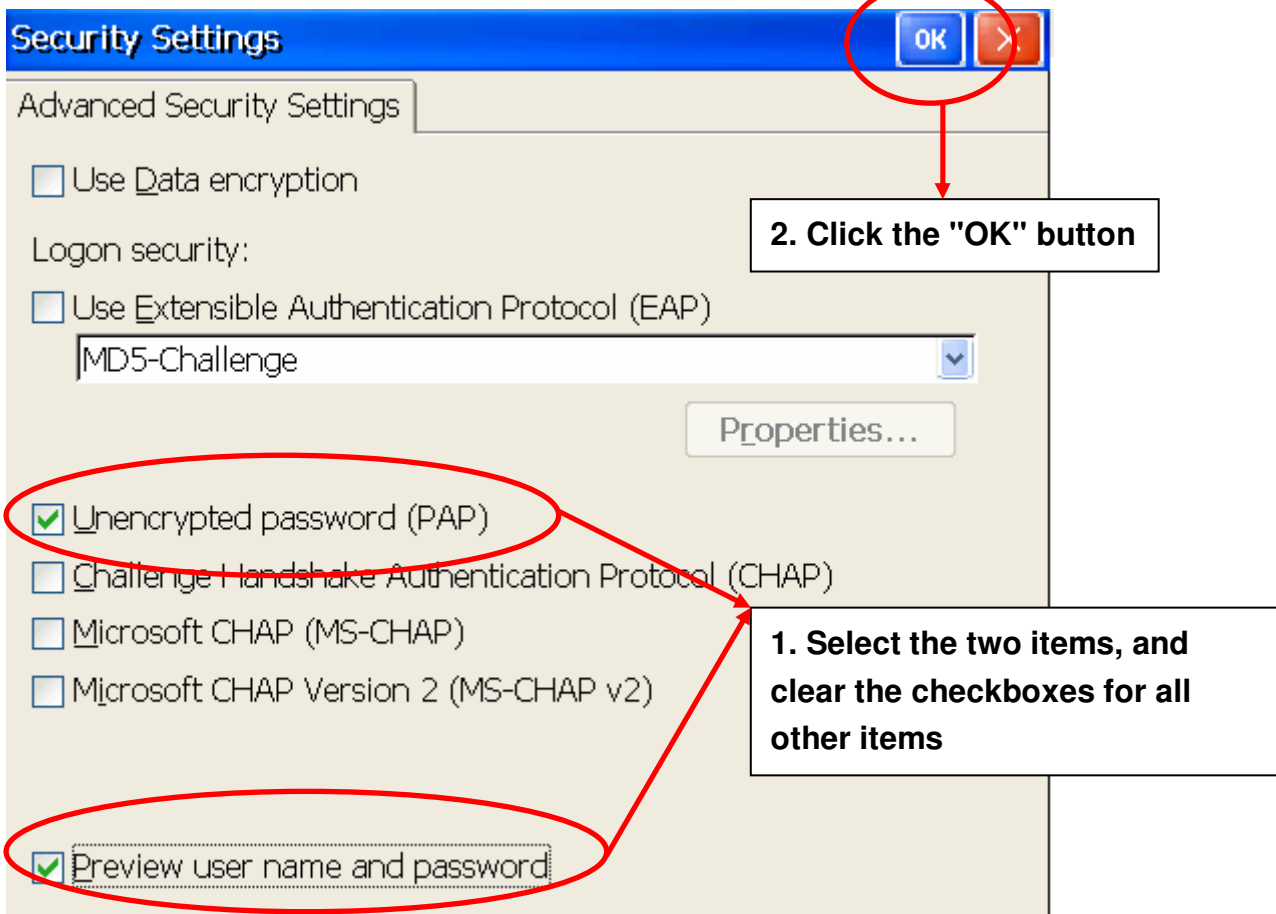
Step 4: In the "Select a device" drop-down menu, select the "PPPoE Line 0" option indicated as the dial-up connection from LAN1, select the "PPPoE Line 1" option indicated as the dial-up connection from LAN2.



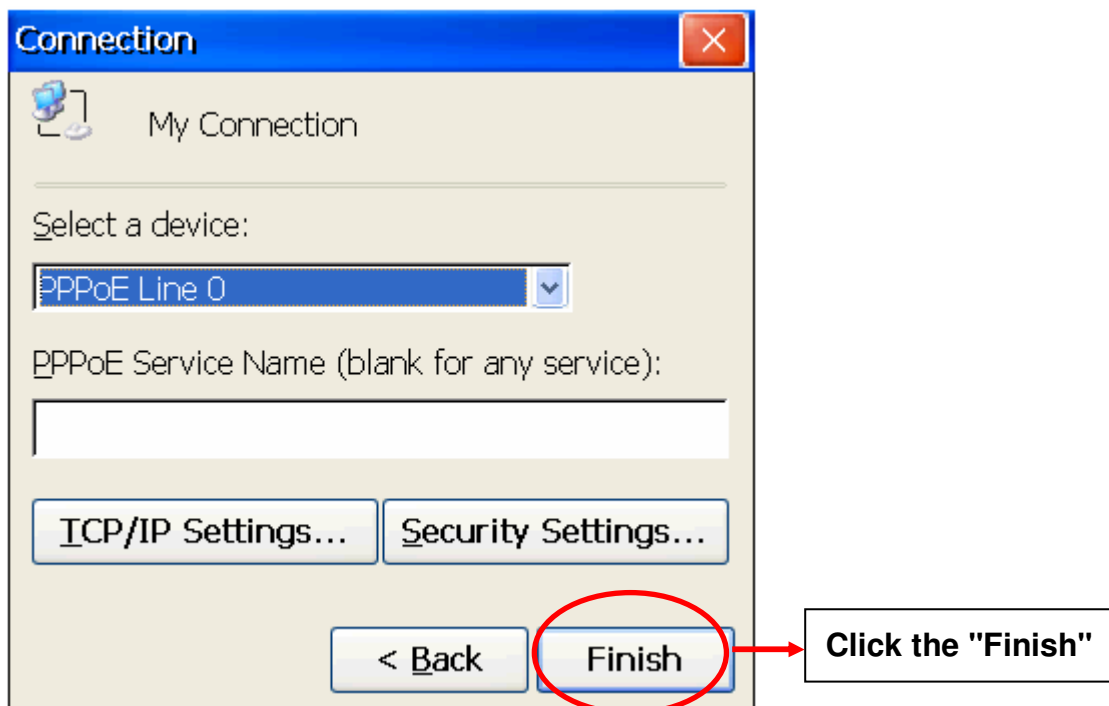
Step 5: Click the "Security Settings" button.



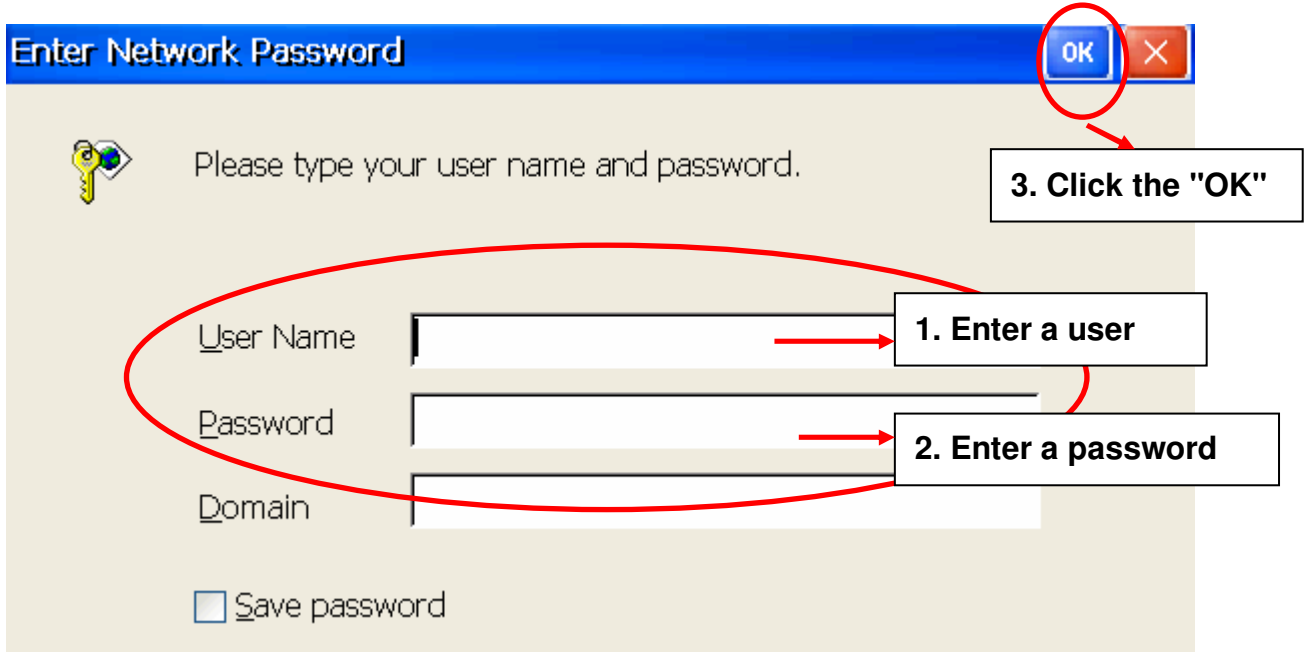
Step 6: In the "Security Settings" dialog box, check the "Unencrypted password (PAP)" and the "Preview user name and password" checkbox items, and clear check boxes for all other items, then click the "OK" button._



Step 7: Click the "Finish" button to save the settings and complete the creation of the new connection.



Step 8: In the Network settings window, double-click the icon for the new "PPPoE" connection and then enter a user name and password in the login window. If you wish to save the password for future use, check the "Save password" checkbox. Click the "OK" button to establish a connection.



Step 9: A status window will be displayed with the message "Connected", indicating that the connection was successfully established.

