


# WP-5000 OS Release Note,

## Version 1.0.0.0 [September, 02, 2010]

OS Key Features:

Features	Supported	Description
Windows CE 5.0 Core OS	Yes	
Language of OS	Yes	WP-5000-EN: Multi-language <ul style="list-style-type: none"> <li>● English</li> <li>● German</li> <li>● Russian</li> <li>● French</li> <li>● Spanish</li> <li>● Italian</li> </ul> WP-5000 -SC: Simplified Chinese WP-5000 -TC: Traditional Chinese
.NET Compact Framework 2.0	Yes	V2.0.7045 for Visual Studio .Net 2005/2008
SQL CE 3.5	Yes	SQL CE 3.5 (3.5.5386.0)
FTP Server	Yes	
Http Server	Yes	
Telnet	Yes	
Printer	Yes(PCL 6)	For HP Laser Jet printer on USB and Ethernet (over the network neighborhood)
Touch Panel	Yes	
XW board 	Yes	XW107(8 DI,8 DO) XW506(RS-232 *6), XW507(6 DI,6 DO,RS-485 *1), XW509(4 DI,4 DO,RS-232 *2), XW511i(RS-485 *3),

## Table of Contents

OS Version 1.0.0.0 [September, 02, 2010].....	3
The different to the Windows CE Core and Professional OS.....	4
The prefix name can be “COM” or “MSA/MSB” for the XW board.....	5

## **OS Version 1.0.0.0 [September, 02, 2010]**

*FIRST RELEASE*

## **Eboot Version 1.0.0.0 [July, 27, 2010]**

*FIRST RELEASE*

## **WinPAC SDK DLL Version 2.0.0.2 [August, 18, 2010]**

### **Enhancements**

- Added Support for WP-5000 series devices.
- Added the new function `uart_SetLineStatus (HANDLE hPort, int pin, int mode)` to control the DTR/RTS pin on the COM port4 and COM port for i-8112/i-8114.

## **XWboard SDK DLL Version 1.0.0.1 [August, 05, 2010]**

- Software Development Kit for XWboard plugged on **WP-5000 series**
- Provide 4 types of API
  - Basic
  - GPIO configuration
  - XWboard I/O
  - XWboard EEPROM

## **WinPAC utility Version 2.0.2.0 [July, 26, 2010]**

### **Enhancements**

- Added Support for WP-5000 series devices.

# The different to the Windows CE Core and Professional OS

WP-5000 uses the Windows CE Core OS, the difference between Professional OS and Core OS show in the table below.

Components	Core	Professional
Standard SDK for windows CE	NO	YES
Help	NO	YES
WordPad	NO	YES
Internet Explorer 6.0 Sample Browser	NO	YES
Internet Explorer Browser Control Host	NO	YES
Internet Explorer HTML/DHTML API	NO	YES
Sample Internet Explorer 6.0 Internet Options Control Panel	NO	YES
AYGShell API Set	NO	YES

More information, please refer to:

<http://www.microsoft.com/downloads/details.aspx?familyid=9387a73d-d046-4f36-a862-613743e75197&displaylang=en>

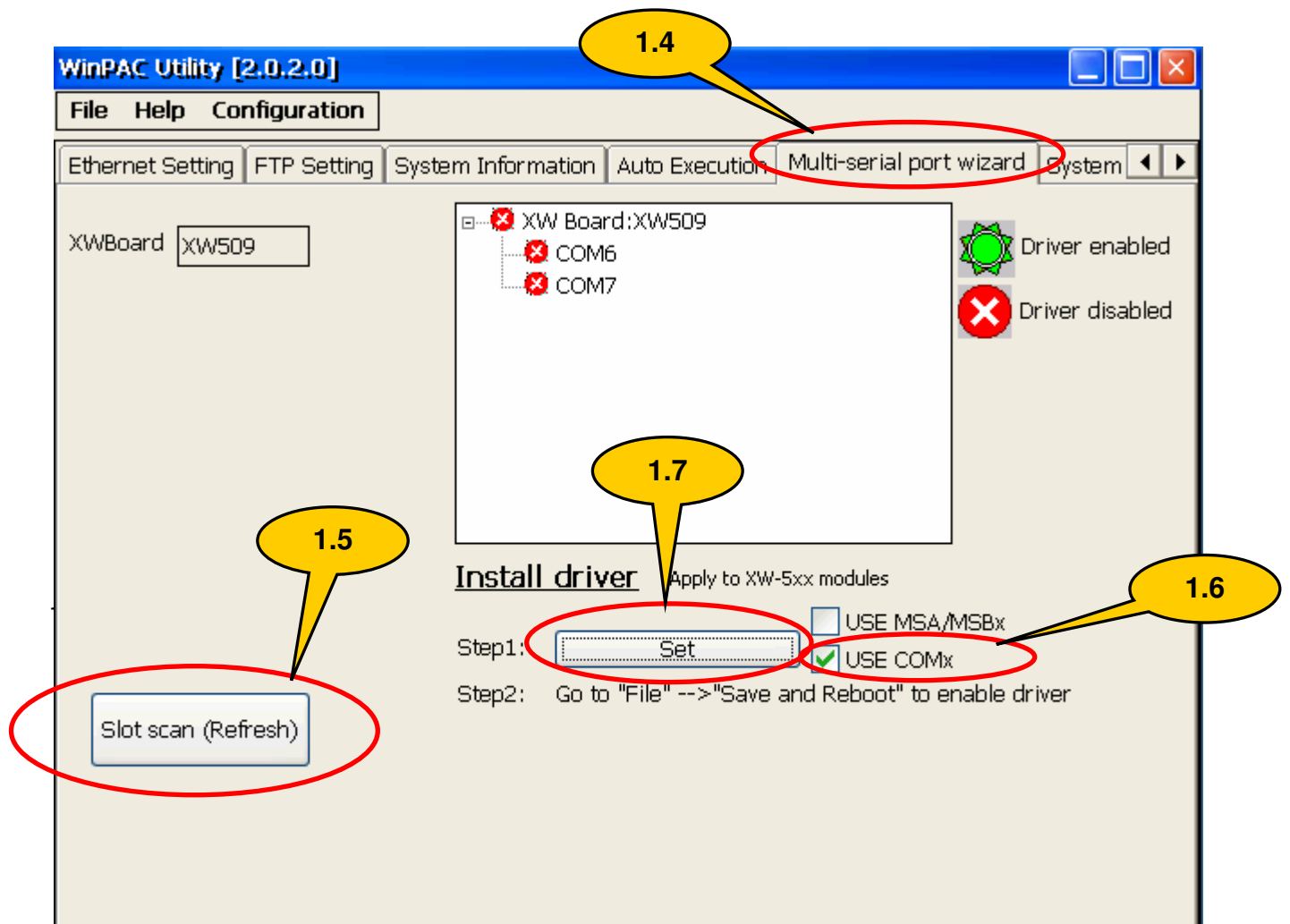
# The prefix name can be “COM” or “MSA/MSB” for the XW board

1.1. Start the WinPAC utility on the desktop, and then click the “Multi-serial port wizard” index page.

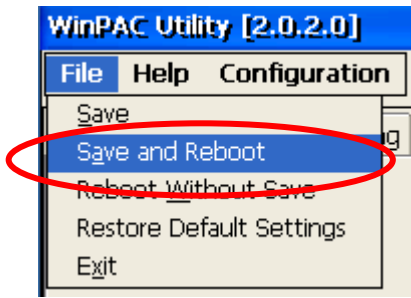
1.2 Click the “Slot scan (Refresh)” button, the module plugged on the WP-5000 will show on the slot text box.

1.3 Check the “USE COMx” box

1.4 Click the “Set” button to install the driver.



1.5 Click the "File->save and Reboot" menu option to reboot the WP-5000.



1.6 After rebooting, the driver **will be installed** and enabled.

