

1 YEAR
WARRANTY



QUICK START

OMEGA® User's Guide

*Shop online at
omega.com®*

*e-mail: **info@omega.com**
For latest product manuals:
omegamannual.info*



OME-ET-7000 AND OME-PET-7000 SERIES Ethernet I/O Modules



OMEGAnet[®] On-Line Service
omega.com

Internet e-mail
info@omega.com

Servicing North America:

U.S.A.: ISO 9001 Certified

OMEGA Engineering, Inc., One Omega Drive
P.O. Box 4047, Stamford, CT 06907-0047 USA
Toll-Free: 1-800-826-6342
TEL: (203) 359-1660 FAX: (203) 359-7700
e-mail: info@omega.com

Canada:

976 Bergar, Laval (Quebec)
H7L 5A1, Canada
Toll-Free: 1-800-826-6342
TEL: (514) 856-6928 FAX: (514) 856-6886
e-mail: info@omega.ca

For immediate technical or application assistance:

U.S.A. and Canada:

Sales Service: 1-800-826-6342 / 1-800-TC-OMEGA[®]
Customer Service: 1-800-622-2378 / 1-800-622-BEST[®]
Engineering Service: 1-800-872-9436 / 1-800-USA-WHEN[®]

Mexico/ Latin America:

TEL: 001 (203) 359-1660
FAX: 001 (203) 359-7700
e-mail: espanol@omega.com

Servicing Asia

China: 1698 Yi Shan Road, Unit 102, Min Hang District
Shanghai, China 201103 P.R.C.
Hotline: 800 819 0559 / 400 619 0559
e-mail: info@cn.omega.com

Servicing Europe:

Benelux:

Toll-Free: 0800 099 3344
TEL: +31 20 347 21 21
FAX: +31 20 643 46 43
e-mail: sales@omega.nl

Czech Republic:

Frystatska 184
733 01 Karviná, Czech Republic
Toll-Free: 0800-1-66342
TEL: +420-59-6311899
FAX: +420-59-6311114
e-mail: info@omegashop.cz

France:

Toll-Free: 0850 541038
TEL: 01 57 32 48 17
FAX: 01 57 32 48 18
e-mail: esales@omega.fr

Germany/ Austria:

Daimlerstrasse 26
D-75392 Deckenpfronn, Germany
Toll-Free: 0800 8266342
TEL: +49 (0) 7056 9398-0
FAX: +49 (0) 7056 9398-29
e-mail: info@omega.de

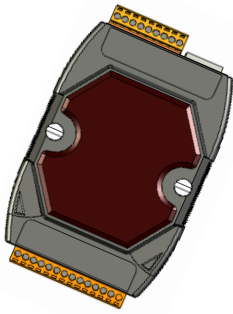
United Kingdom: ISO 9001 Certified

OMEGA Engineering Ltd.
One Omega Drive
River Bend Technology Centre, Northbank
Irlam, Manchester M44 5BD England
Toll-Free: 0800-488-488
TEL: +44 (0) 161 777-6611
FAX: +44 (0) 161 777-6622
e-mail: sales@omega.co.uk

It is the policy of OMEGA Engineering, Inc. to comply with all worldwide safety and EMC/EMI regulations that apply. OMEGA is constantly pursuing certification of its products to the European New Approach Directives. OMEGA will add the CE mark to every appropriate device upon certification.

The information contained in this document is believed to be correct, but OMEGA accepts no liability for any errors it contains, and reserves the right to alter specifications without notice.

WARNING: These products are not designed for use in, and should not be used for, human applications.

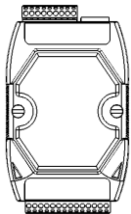


Quick Start Guide for OME-ET-7000 and OME-PET-7000 Ethernet I/O Modules

Congratulations on purchasing OME-ET-7000/OME-PET-7000 series - the most popular automation solution for remote monitoring and control application. This Quick Start Guide will provide information needed to get started with OME-ET-7000/OME-PET-7000 series. Please also consult the User Manual for detailed information on the setup and use of OME-ET-7000/OME-PET-7000 series.

What's in the Box?

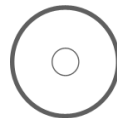
In addition to this guide, the package includes the following items:



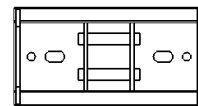
1 x Module



2 x A4 Sheet
(Quick Start)



1 x CD

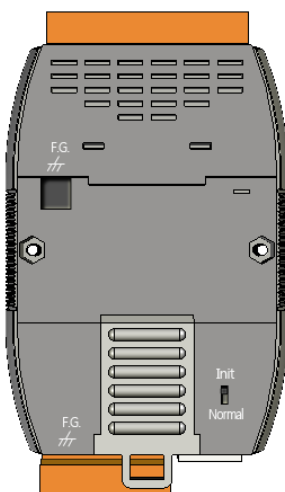


1 x Plastic DIN-Rail
Mounting Kit



1 x Screw
Driver

1 Configuring Boot Mode

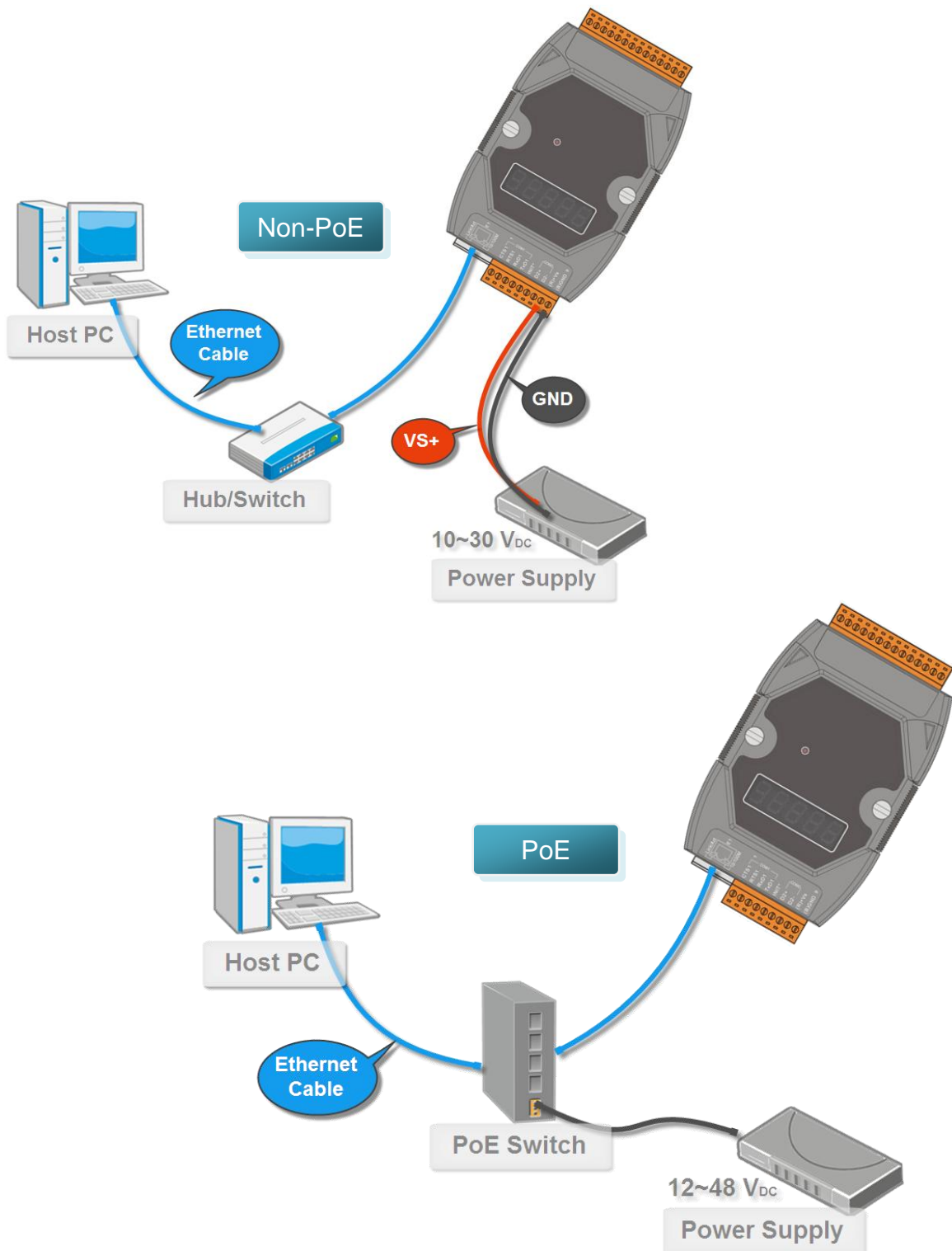


Init Mode: For system configuration. After booting, an OME-ET-7000/OME-PET-7000 series module will not run the default firmware and cannot surf the internet. Use this mode to update MiniOS7 image.

Normal Mode: For normal working. After booting, an OME-ET-7000/OME-PET-7000 series module will run the default firmware and can use all OME-ET-7000/OME-PET-7000 series functions.

2 Connecting to Network, PC and Power

The OME-ET-7000/OME-PET-7000 series is equipped with an RJ-45 Ethernet port for connection to an Ethernet hub/switch and PC



3 Installing the MiniOS7 Utility

Step 1: Get the MiniOS7 Utility tool

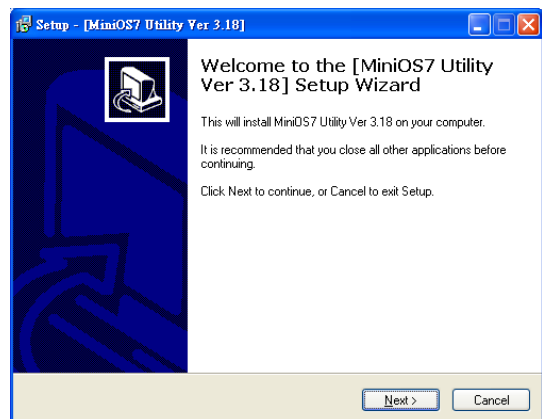


The MiniSO7 Utility can be obtained from companion CD.

Step 2: Follow the prompts to complete the installation



After the installation has been completed, there will be a new short-cut for MiniOS7 Utility on the desktop.



4 Using MiniOS7 Utility to Assign a New IP

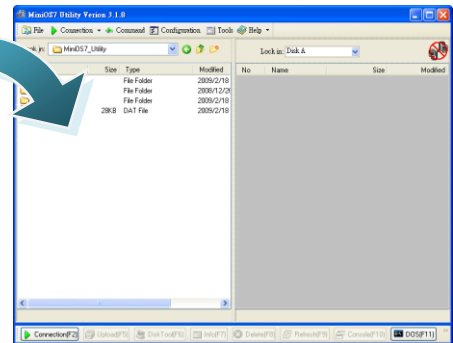
The OME-ET-7000/OME-PET-7000 series are Ethernet device, which comes with a default IP address, therefore, you must first assign a new IP address to the module.

The factory default IP settings are as follows:

| Item | Default |
|-------------|---------------|
| IP Address | 192.168.255.1 |
| Subnet Mask | 255.255.0.0 |
| Gateway | 192.168.0.1 |

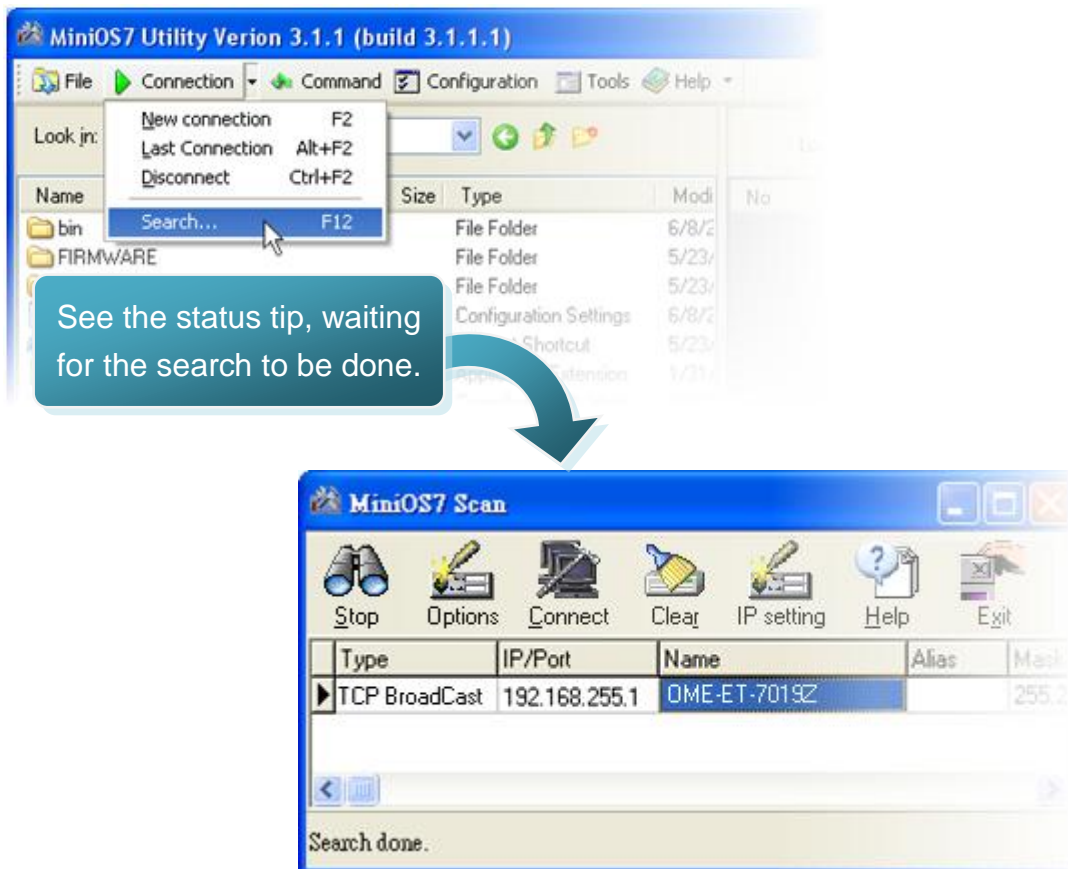
Step 1: Run the MiniOS7 Utility

Double-click the MiniOS7 Utility shortcut on your desktop.



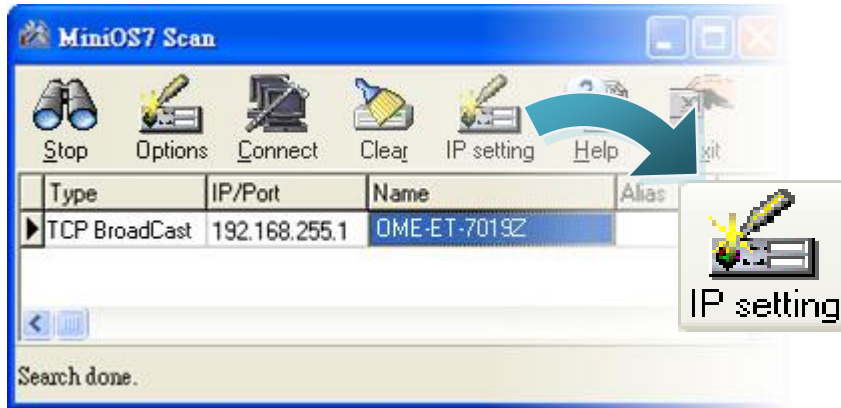
Step 2: Press "F12" or choose "Search" from the "Connection" menu

After pressing F12 or choosing Search from Connection menu, the MiniOS7 Scan dialog will appear, that will display a list of all the MiniOS7 modules on your network.

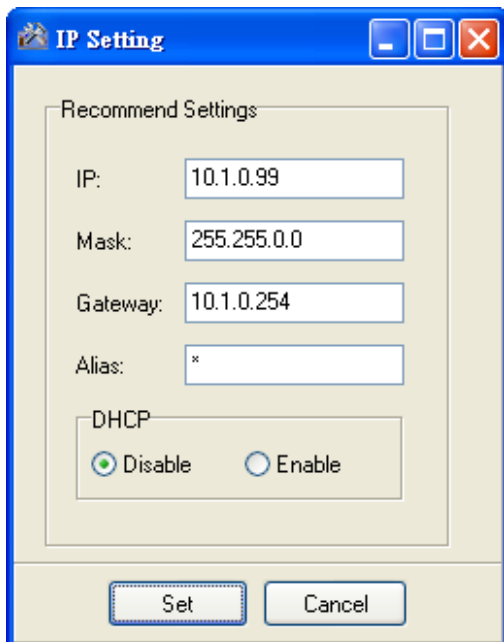


Step 3: Choose the module name and then choose “IP setting” from the toolbar

Choose the module name for fields in the list, and then choose IP setting from the toolbar.

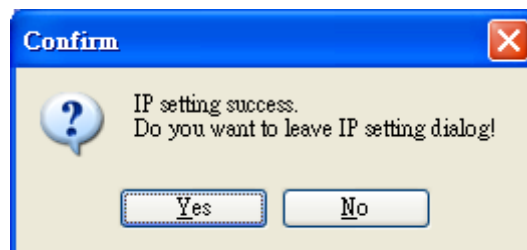


Step 4: Assign a new IP address and then choose “Set” button



Step 5: Choose “Yes” button

After completing the settings, press the Yes button in the Confirm dialog box to exit the procedure.



5 Enabling Adobe Flash Player in Your Browser

Your browser must support Adobe Flash Player and have it enabled in order to use the OME-ET-7000/OME-PET-7000 series web site.

If you do not have it installed, please go to the following website to and install it.



The Adobe Flash Player Download Center:

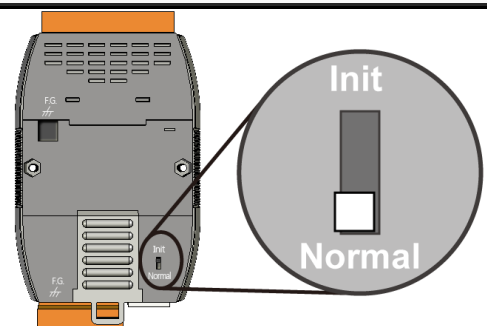
<http://get.adobe.com/flashplayer/>

6 Go to the OME-ET-7000/OME-PET-7000 series Web Site to Check out Functions

The OME-ET-7000/OME-PET-7000 series contains an advanced web configuration system that provides users with access to OME-ET-7000/OME-PET-7000 series applications through a standard web browser.

Step 1: Start OME-ET-7000/OME-PET-7000 series

Make sure the switch placed in the “Normal” position.
Then reboot OME-ET-7000/OME-PET-7000 series.



Step 2: Open a browser

Please use a standard internet browser to view the OME-ET-7000/OME-PET-7000 series webpage, such as Mozilla Firefox or Internet Explorer..., etc.

Step 3: Type the URL address of the OME-ET-7000/OME-PET-7000 series module

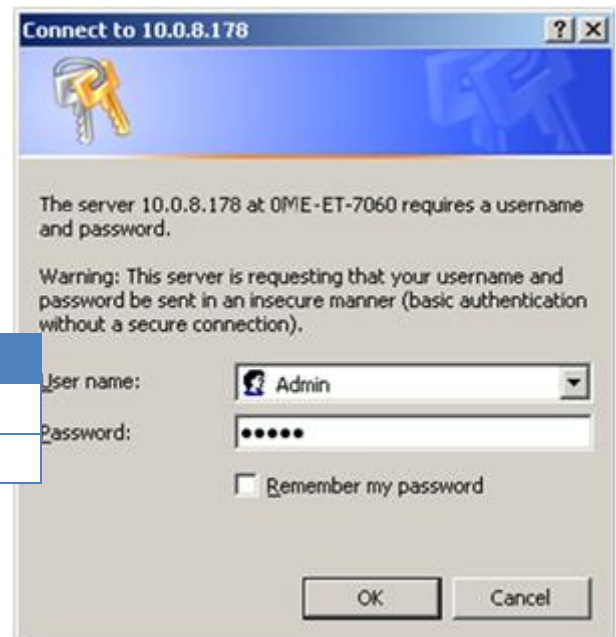
If you haven't changed the default IP address of the OME-ET-7000/OME-PET-7000 series module, please refer to Step 6. "Using MiniOS7 Utility to Assign a New IP" to configure it.

Step 4: Fill out the User name and Password

After entering the IP address, the login dialog box will appear and prompt you to enter your username and password.

The factory default user name and password are as follows:

| Item | Default |
|-----------|---------|
| User name | Admin |
| Password | Admin |



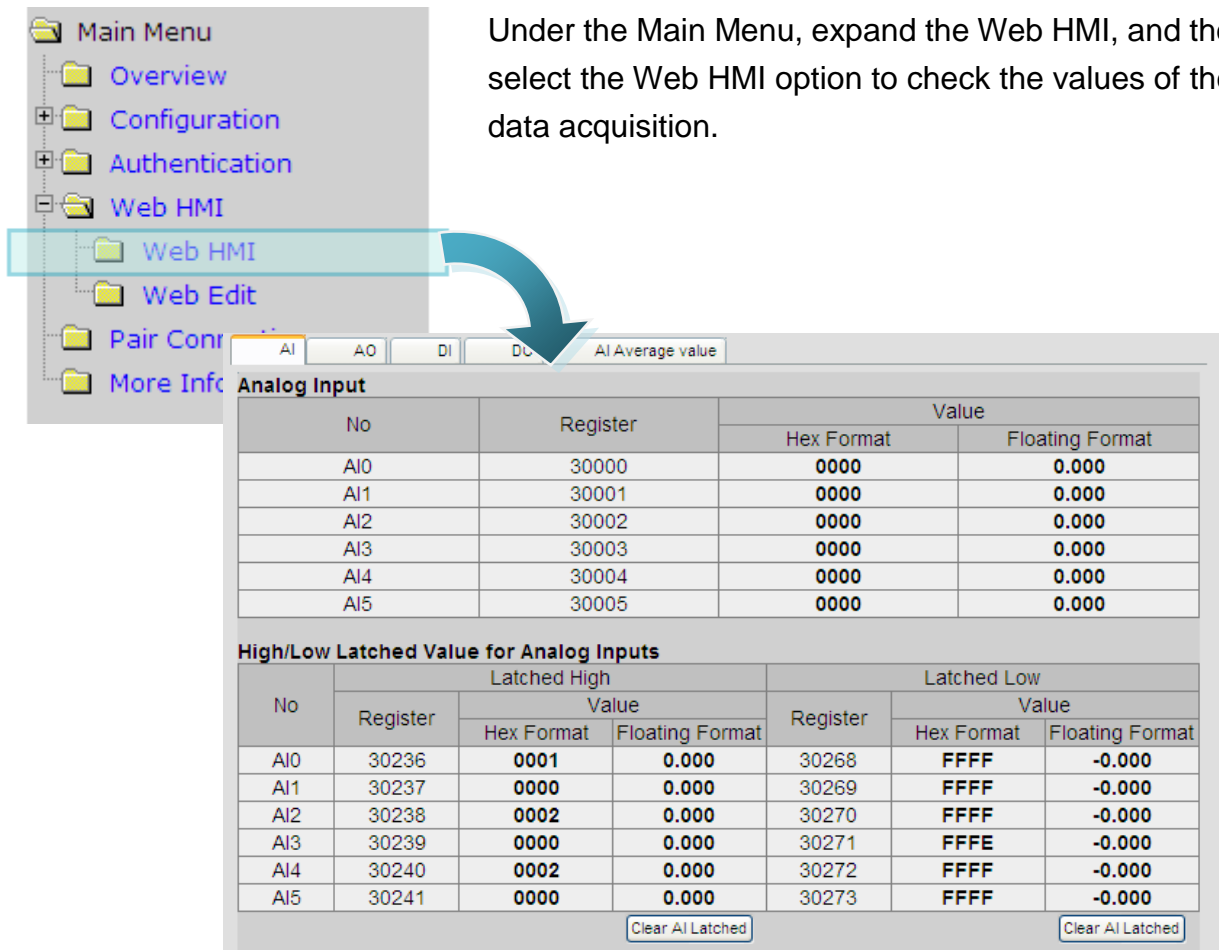
Step 5: Welcome to OME-ET-7000/OME-PET-7000 series web site

After logging into the OME-ET-7000/OME-PET-7000 series web site, the welcome page will appear.



Step 6: Check out the data acquisition services

Under the Main Menu, expand the Web HMI, and then select the Web HMI option to check the values of the data acquisition.



The screenshot shows the Web HMI interface with the following data:

| No | Register | Value | |
|-----|----------|------------|-----------------|
| | | Hex Format | Floating Format |
| AI0 | 30000 | 0000 | 0.000 |
| AI1 | 30001 | 0000 | 0.000 |
| AI2 | 30002 | 0000 | 0.000 |
| AI3 | 30003 | 0000 | 0.000 |
| AI4 | 30004 | 0000 | 0.000 |
| AI5 | 30005 | 0000 | 0.000 |

| No | Register | Latched High | | Latched Low | | |
|-----|----------|--------------|-----------------|-------------|------------|-----------------|
| | | Value | | Register | Value | |
| | | Hex Format | Floating Format | | Hex Format | Floating Format |
| AI0 | 30236 | 0001 | 0.000 | 30268 | FFFF | -0.000 |
| AI1 | 30237 | 0000 | 0.000 | 30269 | FFFF | -0.000 |
| AI2 | 30238 | 0002 | 0.000 | 30270 | FFFF | -0.000 |
| AI3 | 30239 | 0000 | 0.000 | 30271 | FFFE | -0.000 |
| AI4 | 30240 | 0002 | 0.000 | 30272 | FFFF | -0.000 |
| AI5 | 30241 | 0000 | 0.000 | 30273 | FFFF | -0.000 |

Buttons: Clear AI Latched (two instances)

WARRANTY/DISCLAIMER

OMEGA ENGINEERING, INC. warrants this unit to be free of defects in materials and workmanship for a period of **13 months** from date of purchase. OMEGA's WARRANTY adds an additional one (1) month grace period to the normal **one (1) year product warranty** to cover handling and shipping time. This ensures that OMEGA's customers receive maximum coverage on each product.

If the unit malfunctions, it must be returned to the factory for evaluation. OMEGA's Customer Service Department will issue an Authorized Return (AR) number immediately upon phone or written request. Upon examination by OMEGA, if the unit is found to be defective, it will be repaired or replaced at no charge. OMEGA's WARRANTY does not apply to defects resulting from any action of the purchaser, including but not limited to mishandling, improper interfacing, operation outside of design limits, improper repair, or unauthorized modification. This WARRANTY is VOID if the unit shows evidence of having been tampered with or shows evidence of having been damaged as a result of excessive corrosion; or current, heat, moisture or vibration; improper specification; misapplication; misuse or other operating conditions outside of OMEGA's control. Components in which wear is not warranted, include but are not limited to contact points, fuses, and triacs.

OMEGA is pleased to offer suggestions on the use of its various products. However, OMEGA neither assumes responsibility for any omissions or errors nor assumes liability for any damages that result from the use of its products in accordance with information provided by OMEGA, either verbal or written. OMEGA warrants only that the parts manufactured by the company will be as specified and free of defects. OMEGA MAKES NO OTHER WARRANTIES OR REPRESENTATIONS OF ANY KIND WHATSOEVER, EXPRESSED OR IMPLIED, EXCEPT THAT OF TITLE, AND ALL IMPLIED WARRANTIES INCLUDING ANY WARRANTY OF MERCHANTABILITY AND FITNESS FOR A PARTICULAR PURPOSE ARE HEREBY DISCLAIMED. LIMITATION OF LIABILITY: The remedies of purchaser set forth herein are exclusive, and the total liability of OMEGA with respect to this order, whether based on contract, warranty, negligence, indemnification, strict liability or otherwise, shall not exceed the purchase price of the component upon which liability is based. In no event shall OMEGA be liable for consequential, incidental or special damages.

CONDITIONS: Equipment sold by OMEGA is not intended to be used, nor shall it be used: (1) as a "Basic Component" under 10 CFR 21 (NRC), used in or with any nuclear installation or activity; or (2) in medical applications or used on humans. Should any Product(s) be used in or with any nuclear installation or activity, medical application, used on humans, or misused in any way, OMEGA assumes no responsibility as set forth in our basic WARRANTY/DISCLAIMER language, and, additionally, purchaser will indemnify OMEGA and hold OMEGA harmless from any liability or damage whatsoever arising out of the use of the Product(s) in such a manner.

RETURN REQUESTS/INQUIRIES

Direct all warranty and repair requests/inquiries to the OMEGA Customer Service Department. BEFORE RETURNING ANY PRODUCT(S) TO OMEGA, PURCHASER MUST OBTAIN AN AUTHORIZED RETURN (AR) NUMBER FROM OMEGA'S CUSTOMER SERVICE DEPARTMENT (IN ORDER TO AVOID PROCESSING DELAYS). The assigned AR number should then be marked on the outside of the return package and on any correspondence.

The purchaser is responsible for shipping charges, freight, insurance and proper packaging to prevent breakage in transit.

FOR **WARRANTY** RETURNS, please have the following information available BEFORE contacting OMEGA:

1. Purchase Order number under which the product was PURCHASED,
2. Model and serial number of the product under warranty, and
3. Repair instructions and/or specific problems relative to the product.

FOR **NON-WARRANTY** REPAIRS, consult OMEGA for current repair charges. Have the following information available BEFORE contacting OMEGA:

1. Purchase Order number to cover the COST of the repair,
2. Model and serial number of the product, and
3. Repair instructions and/or specific problems relative to the product.

OMEGA's policy is to make running changes, not model changes, whenever an improvement is possible. This affords our customers the latest in technology and engineering.

OMEGA is a registered trademark of OMEGA ENGINEERING, INC.

© Copyright 2012 OMEGA ENGINEERING, INC. All rights reserved. This document may not be copied, photocopied, reproduced, translated, or reduced to any electronic medium or machine-readable form, in whole or in part, without the prior written consent of OMEGA ENGINEERING, INC.

Where Do I Find Everything I Need for Process Measurement and Control? **OMEGA...Of Course!** *Shop online at omega.com*

TEMPERATURE

- ☑ Thermocouple, RTD & Thermistor Probes, Connectors, Panels & Assemblies
- ☑ Wire: Thermocouple, RTD & Thermistor
- ☑ Calibrators & Ice Point References
- ☑ Recorders, Controllers & Process Monitors
- ☑ Infrared Pyrometers

PRESSURE, STRAIN AND FORCE

- ☑ Transducers & Strain Gauges
- ☑ Load Cells & Pressure Gauges
- ☑ Displacement Transducers
- ☑ Instrumentation & Accessories

FLOW/LEVEL

- ☑ Rotameters, Gas Mass Flowmeters & Flow Computers
- ☑ Air Velocity Indicators
- ☑ Turbine/Paddlewheel Systems
- ☑ Totalizers & Batch Controllers

pH/CONDUCTIVITY

- ☑ pH Electrodes, Testers & Accessories
- ☑ Benchtop/Laboratory Meters
- ☑ Controllers, Calibrators, Simulators & Pumps
- ☑ Industrial pH & Conductivity Equipment

DATA ACQUISITION

- ☑ Data Acquisition & Engineering Software
- ☑ Communications-Based Acquisition Systems
- ☑ Plug-in Cards for Apple, IBM & Compatibles
- ☑ Datalogging Systems
- ☑ Recorders, Printers & Plotters

HEATERS

- ☑ Heating Cable
- ☑ Cartridge & Strip Heaters
- ☑ Immersion & Band Heaters
- ☑ Flexible Heaters
- ☑ Laboratory Heaters

ENVIRONMENTAL MONITORING AND CONTROL

- ☑ Metering & Control Instrumentation
- ☑ Refractometers
- ☑ Pumps & Tubing
- ☑ Air, Soil & Water Monitors
- ☑ Industrial Water & Wastewater Treatment
- ☑ pH, Conductivity & Dissolved Oxygen Instruments