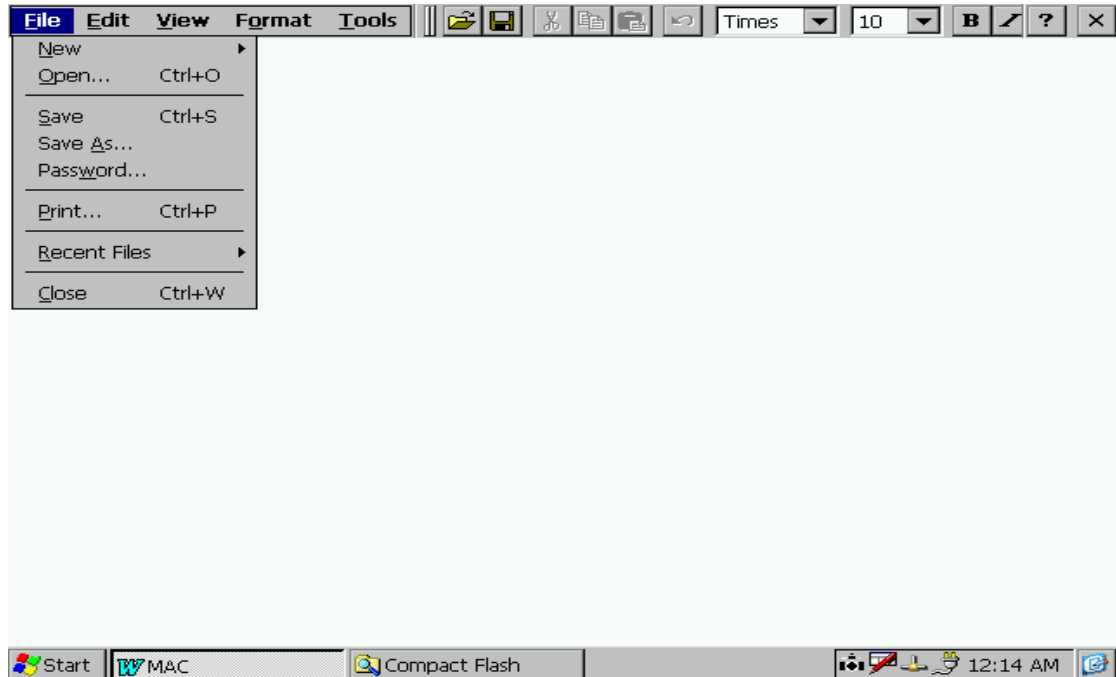
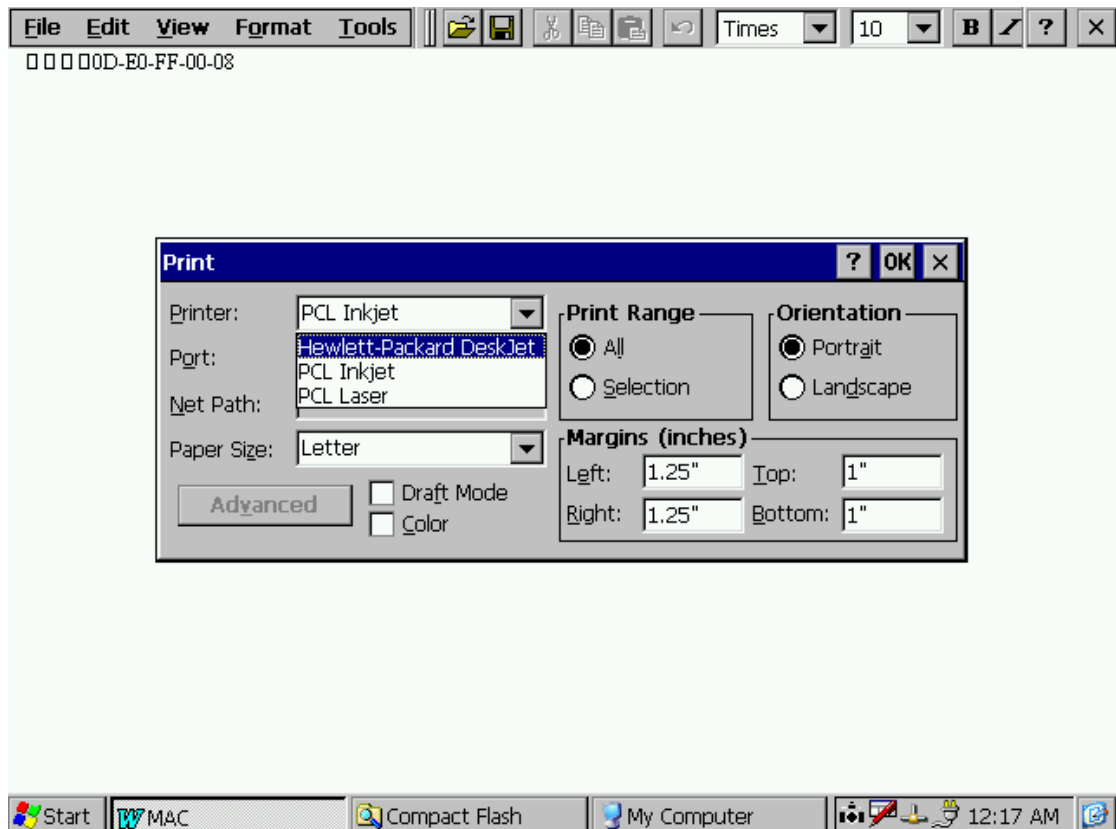


Instruction to setup local/network Printer for Wincon-8000 :

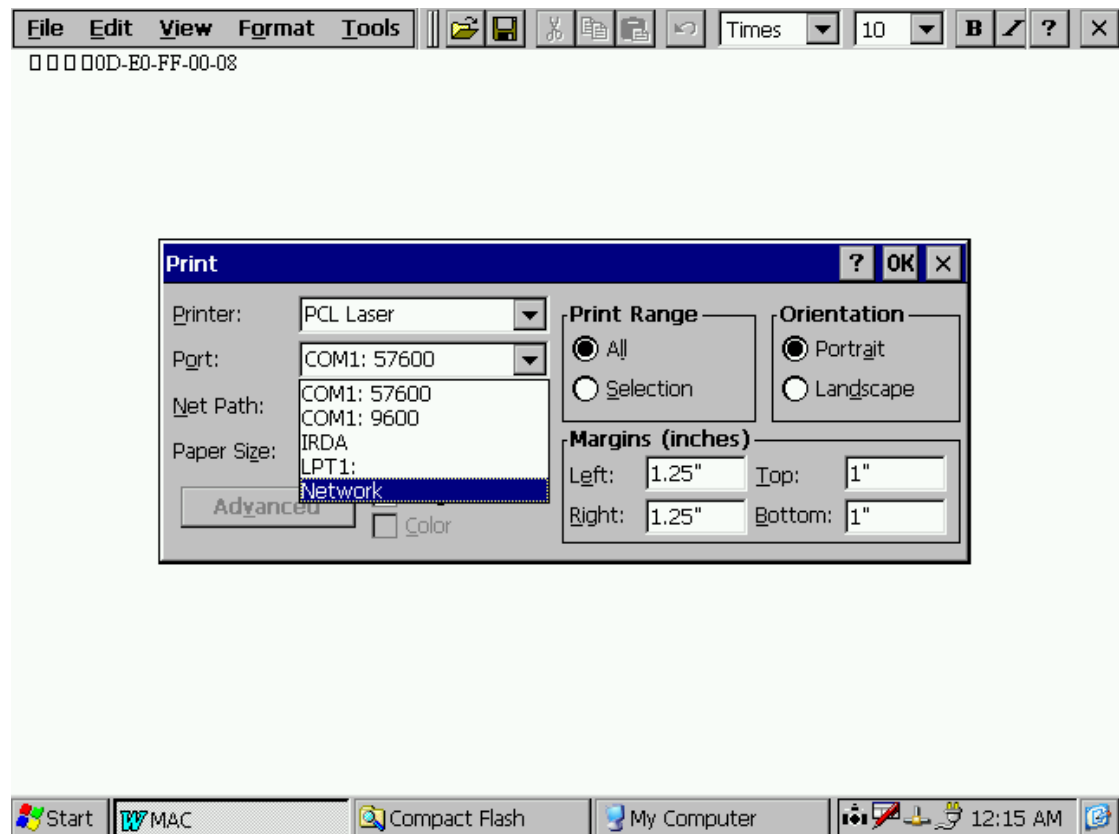
1、 Setup network printer in Wordpad :



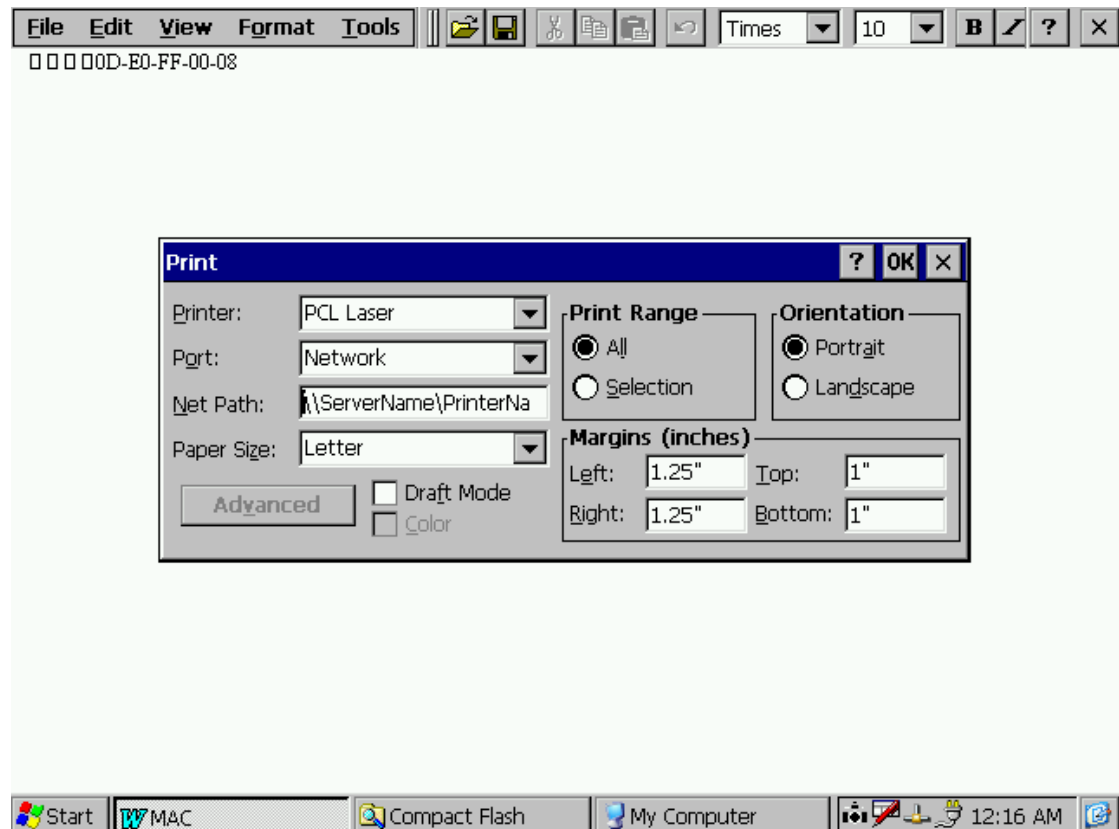
2、 Click Ctrl+P or Select File/Printer... :



3、 Select "Network".



4、 Input the path and printer name.



5、 Setting:

5-1、 Pinter Setting : If there is no USB printer connected to WinCON8000, then it will only display PCL Laser and PCL Inkjet.

5-2、 Port setting : 1) If you connect USB printer to Wincon-8000, please select LPT1.
2) If you want to use Network printer, please select Network.
3) COM1:57600 / COM1:9600 / IRDA / are not in use.

5-3、 Net Path : input the path and printer name

[\\ServerName\PrinterName](#)

P/S :

- 1、 PCL laser and PCL inkjet printer will support most available laser jet or ink-jet printers.
- 2、 Wincon-8000 will NOT support Dot-Matrix printers.