

How to connect Wincon-8000 to Modem?

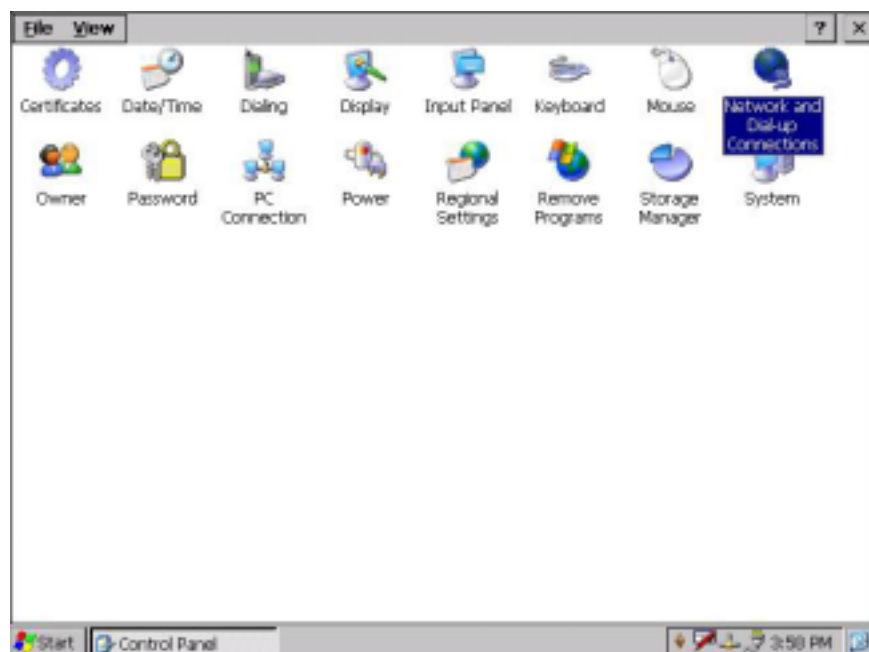
1、 Connection : User needs to connect modem to Wincon-8000 via “COM2”, since COM2 is the only full function(9 wired) RS-232 port in Wincon-8000.

2. Create a new modem connection :

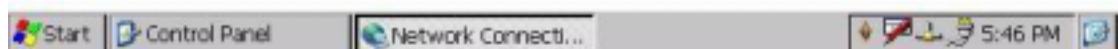
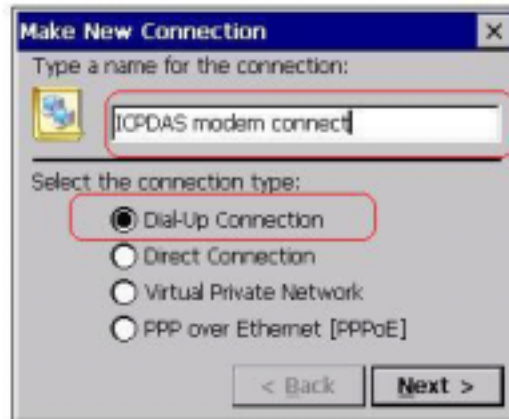
2-1. Select Start -> Setting -> Control Panel->Networking and Dial-Up Connection:



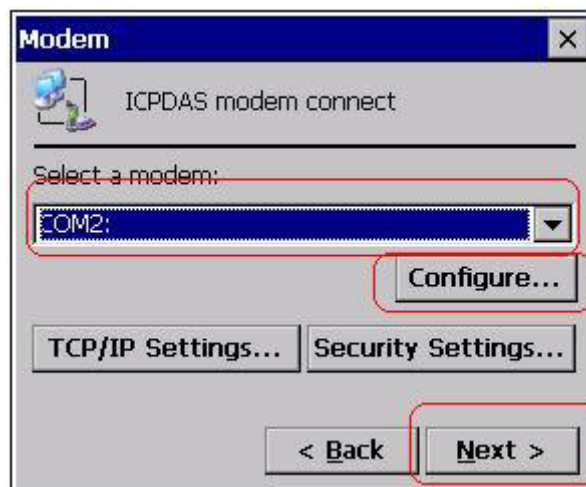
3-2. 2-2. Double clicking “Network and dial-up connection”:



2-3. Select “Make new connection” , then a window will pop-up.
Please fill in the connection name and select connection type
as ”Dial Up Connection”, then click “Next” button to
continue:

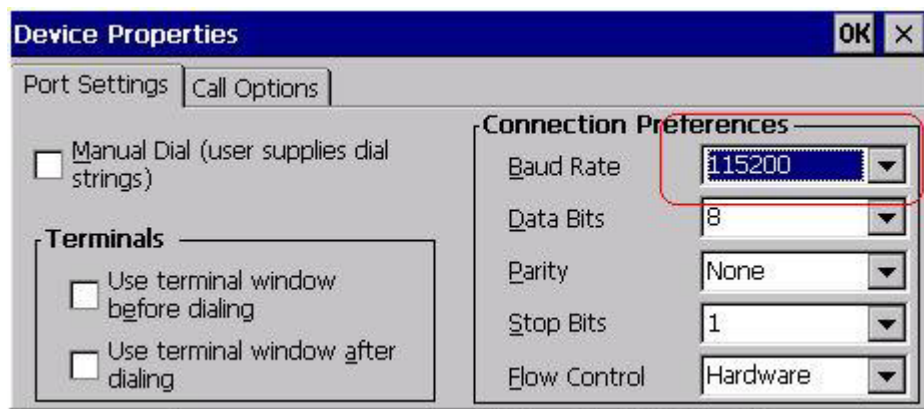


2-4. In this pop-up, only “COM2” can be selected. Modify
“Configure” , “TCP/IP Settings” and “Security Settings” to
proper setting based on ISP suggestion. Then click “Next”
button to continue.

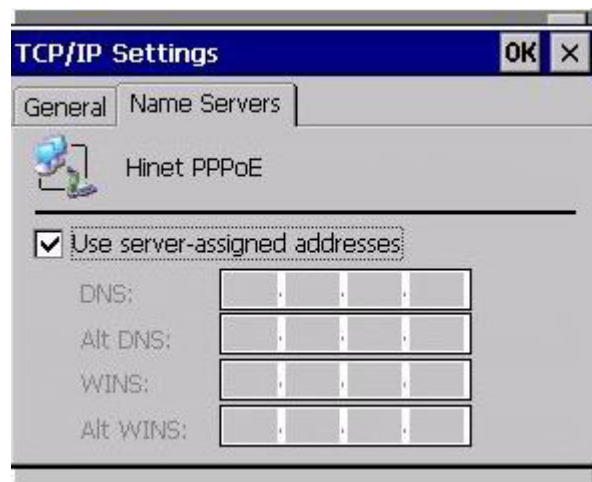
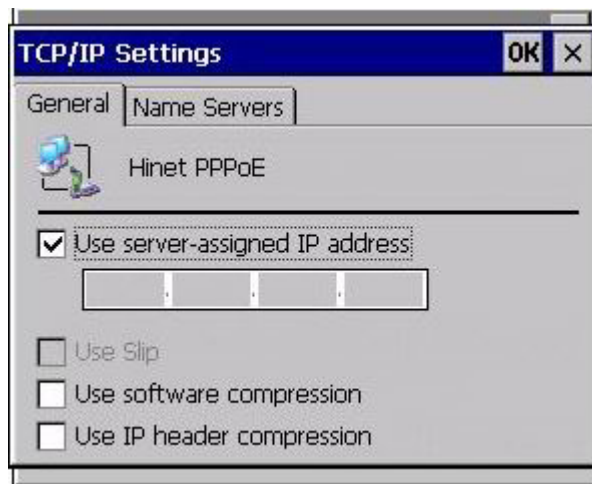


3. Other settings:

3-1. "Configure": In most of cases, you only need to adjust the baud rate.



3-2. TCP/IP settings: Dependant on the requirement of each ISP.



3-3. "Security Settings" : Dependant on the requirement of ISP ! .



4. Execute "Dial up connection" :

- 4-1. Click the newly created dial connection , and input the user name and password in the pop-up window, then press "Connect" button to connect Wincon-8000 with modem.

