

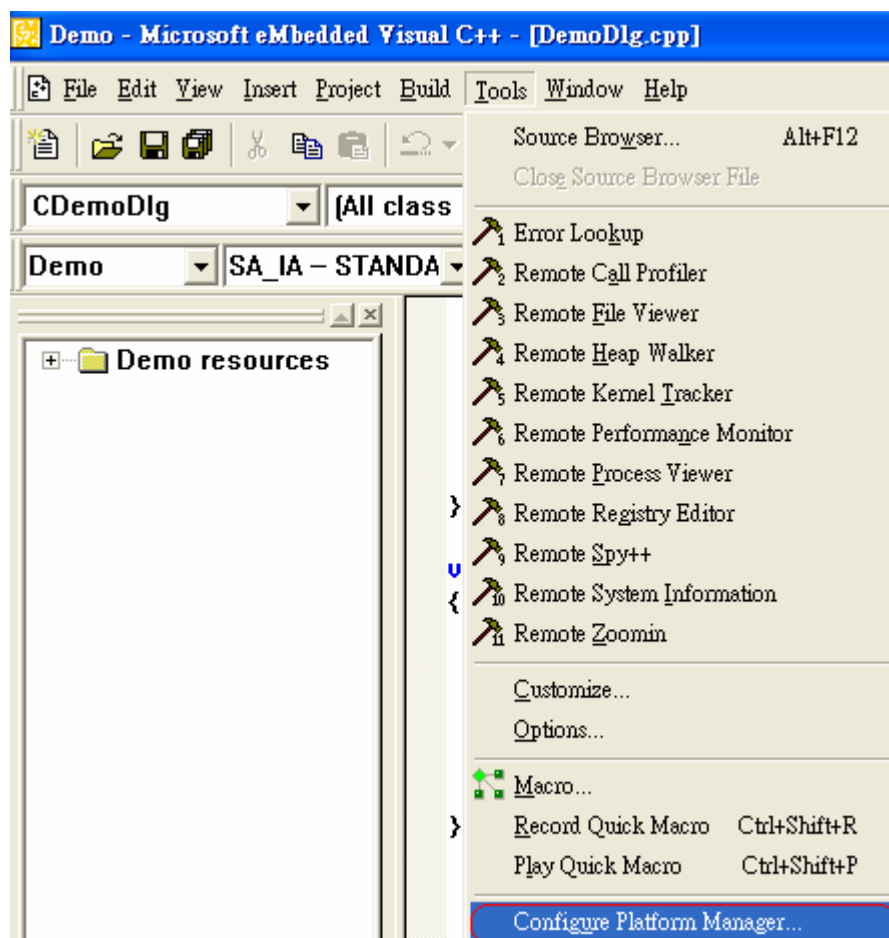
## How to use EVC Debug mode to connect WinCon-8000

( ActiveSync ) :

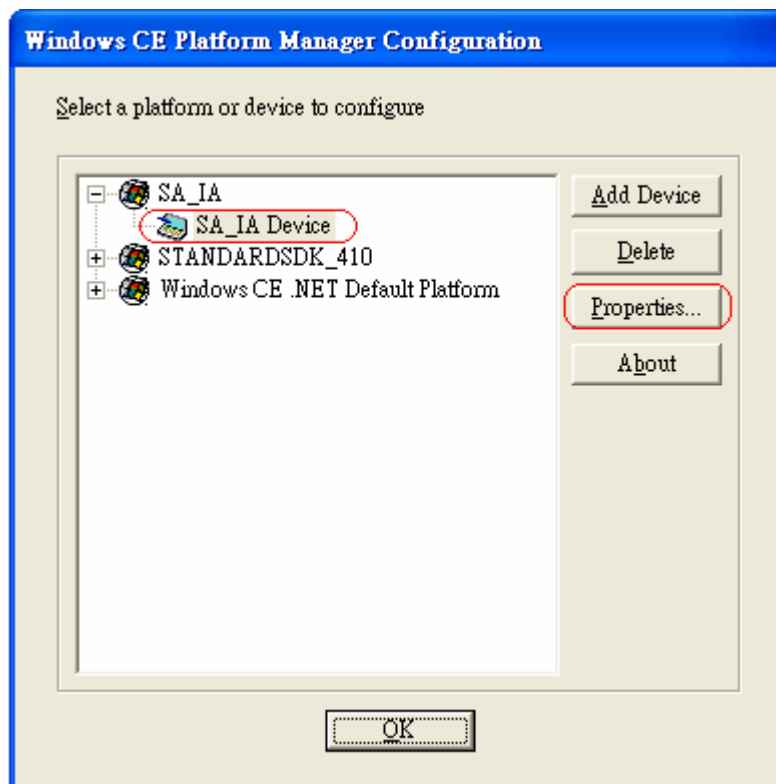
1. First, connect Wincon-8000(COM2) with PC via ActiveSync.
2. Second, make sure WinCon-8000 EVC4 sp1 SDK has been installed on host PC.

### 3. Setting:

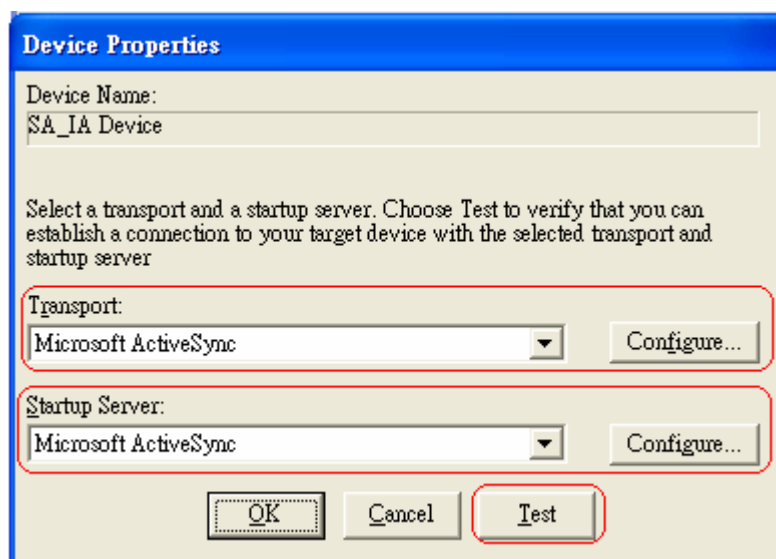
#### 3-1、 Select Tools->Configure Platform Manager:



3-2. Choose SA\_IA Device, then click "Properties" button:



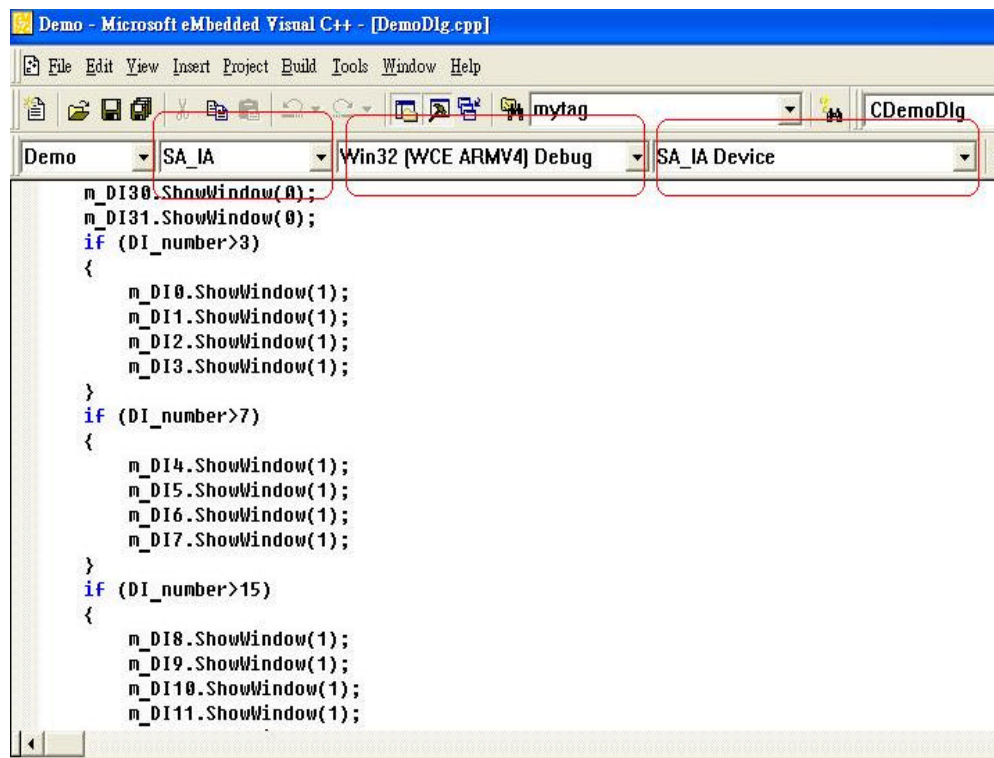
3-3. Choose "Microsoft ActiveSync" on Transport and Startup Server items, then click "Test" button:



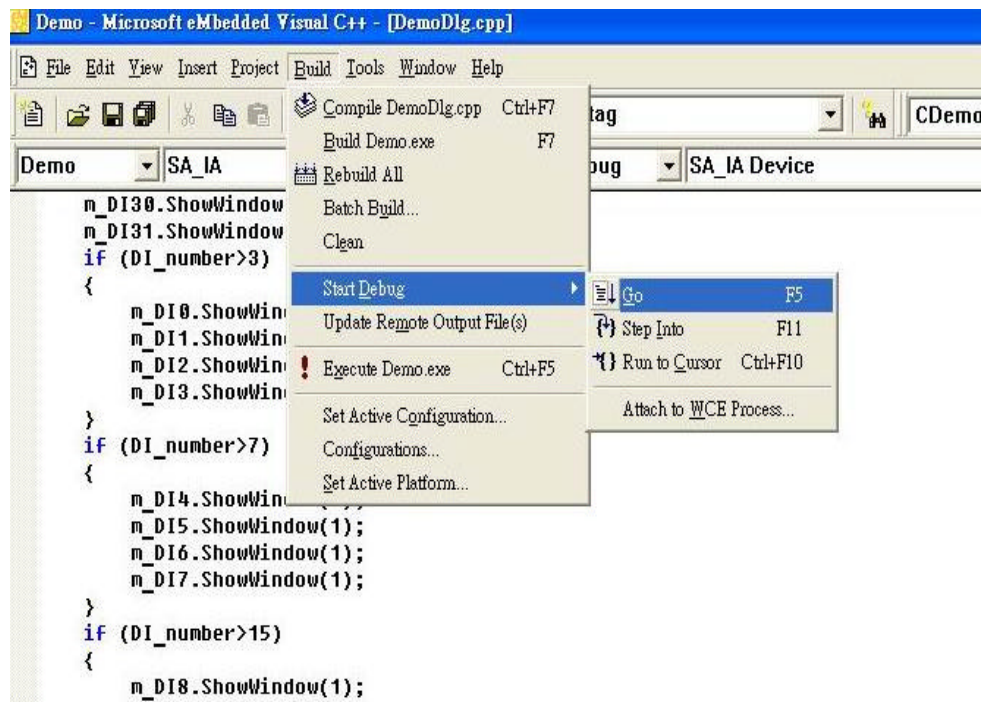
3-4. If connection was established successfully, press “OK” to continue.



- 3-5、 Set Active
- a) WCE Configuration as "SA\_IA"
  - b) Active Configuration as "Win32[WCE ARMV4] Debug".
  - c) Default Device as "SA\_IA Device".



### 3-6. Select Build->Start Debug->Go.



3-8. Afterwards, you will see your own made program running on Wincon-8000 and you can start up program debugging.