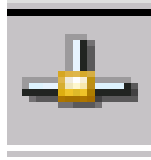


Wincon Side:

First, you must get ip address of the wincon8000.
You can double click the icon that is like Figure1.



Then you will see the detail of the LAN LINK. **(Example: 192.168.100.13)**

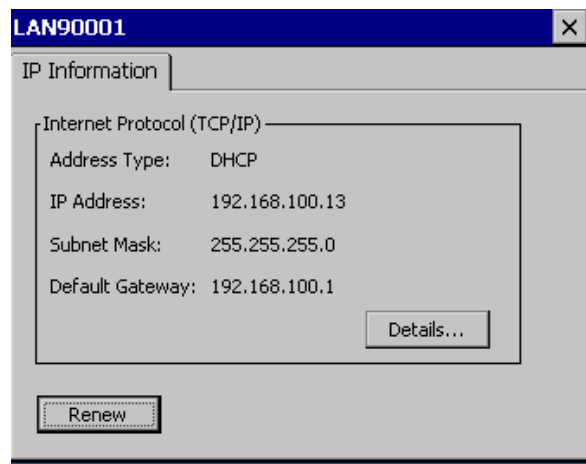


Figure1

When you get this IP address, you can use PC client Wincon8000 by TELNET or FTP.

PC Side:

FTP:

Open the IE, and type the IP address that you got in wincon before into IE's Address. **(Example: ftp://192.168.100.13)**

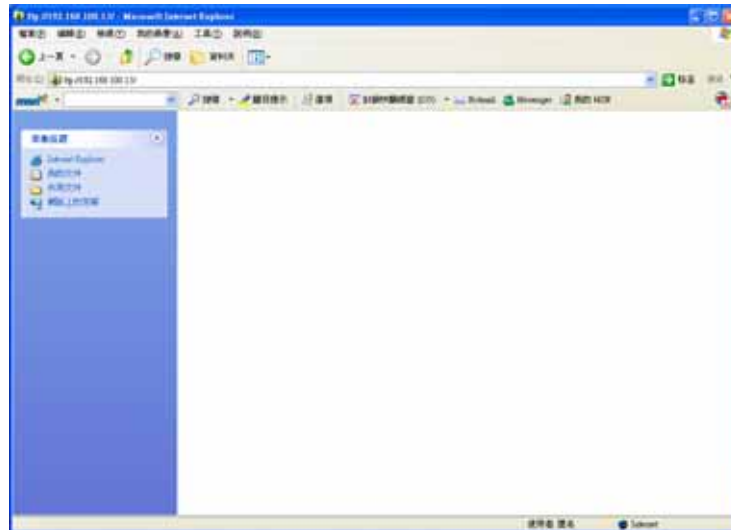


Figure2

Telnet:

Choose Start->Run

Type the command "telnet (wincon8000's IP address)".

(Example: telnet 192.168.100.13)

If it works, it will show you as is like as figure3.

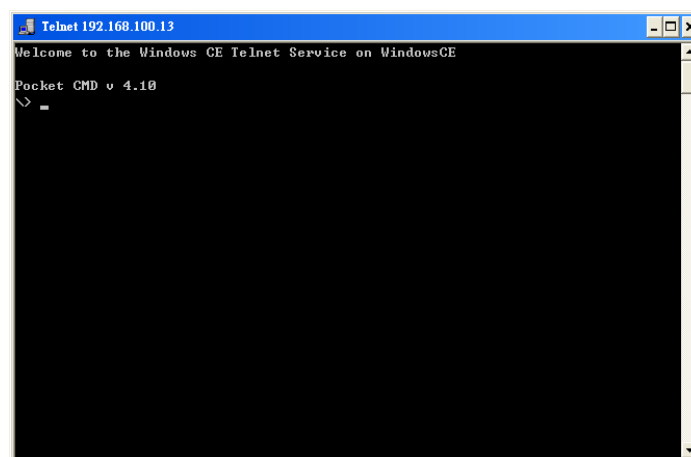


Figure3