

PCI-P16R16

PCI-P8R8

Toolkit

Installation Manual

[For Windows 95/98/NT]

Warranty

All products manufactured by ICP DAS are warranted against defective materials for a period of one year from the date of delivery to the original purchaser.

Warning

ICP DAS assumes no liability for damage consequent to the use of this product. ICP DAS reserves the right to change this manual at any time without notice. The information furnished by ICP DAS is believed to be accurate and reliable. However, ICP DAS assumes no responsibility for its use, or for any infringements of patents or other rights of third parties resulting from its use.

Copyright

Copyright 1997-1999 by ICP DAS. All rights are reserved.

Trademark

The names used for identification only maybe registered trademarks of their respective companies.

License

The user can use and backup this software **on a single machine.** The user may not reproduce, transfer or distribute this software, or any copy, in whole or in part.

Run the setup program of "PCI-P16R16/PCI-P8R8 Toolkit" from the user's CD-ROM drive. The directory is corresponding to the user's drive. Please follow these steps to finish the software installation. Refer to Figure 1 to 4.

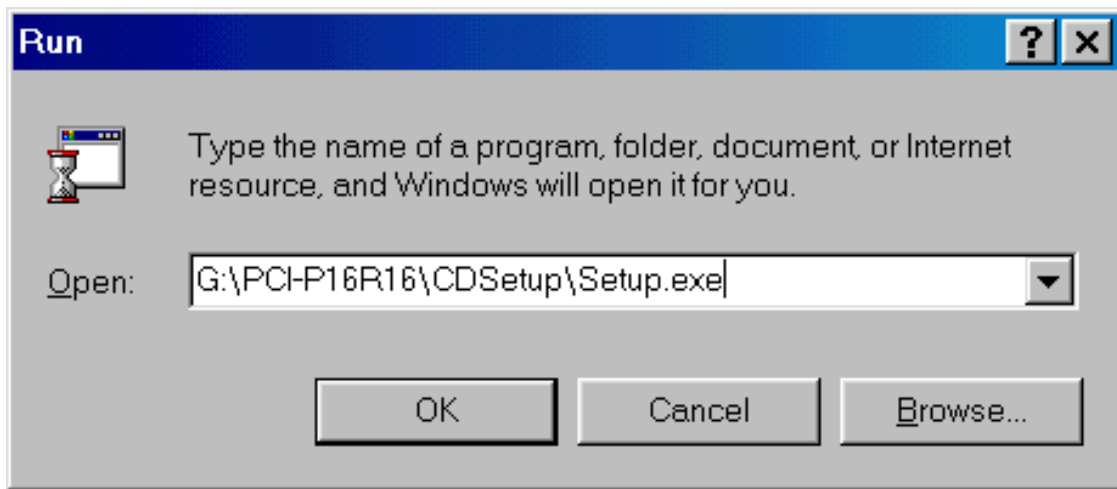


Figure 1. Run the setup program from the user's CD-ROM Drive.

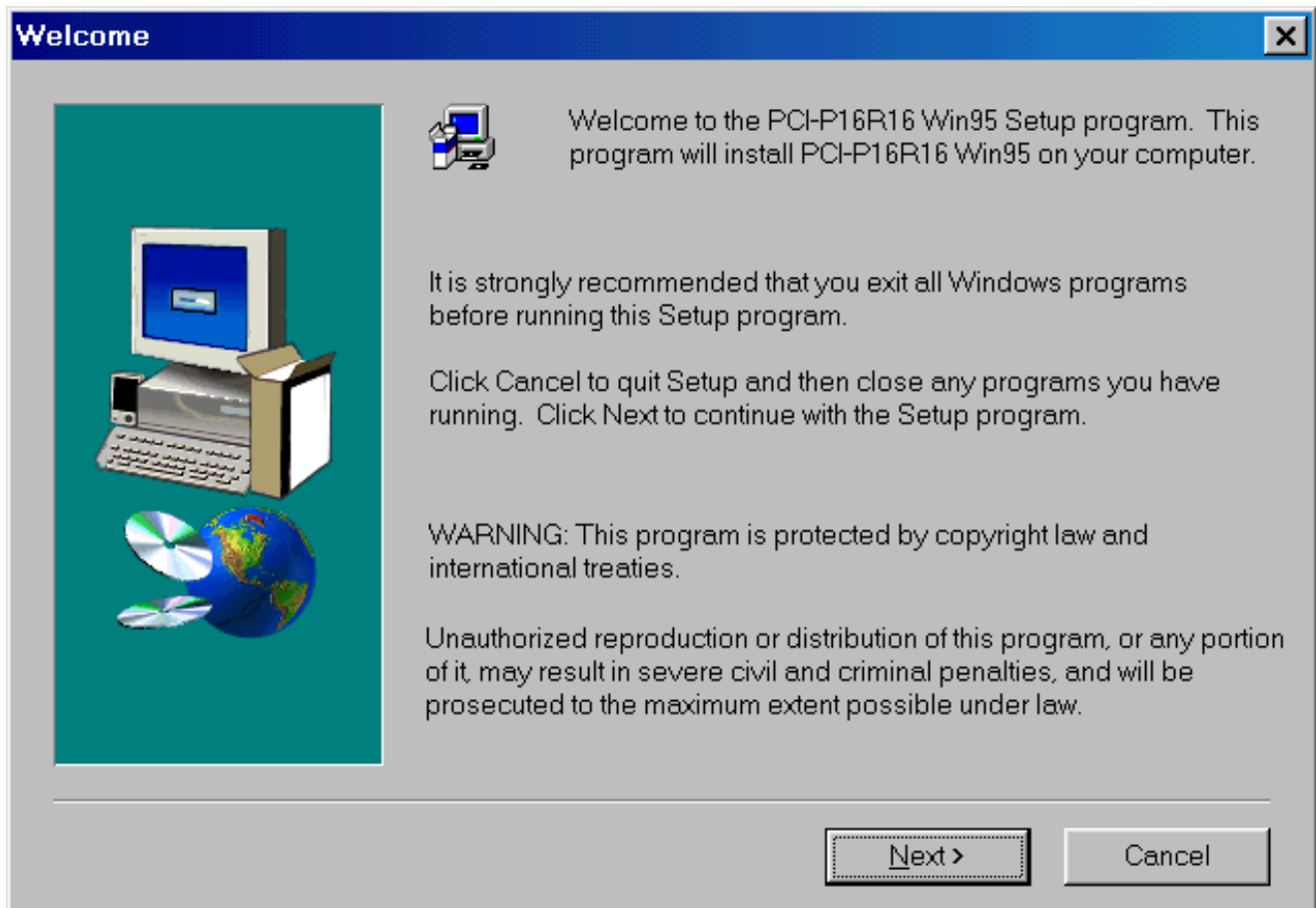


Figure 2. Click the button “Next >”

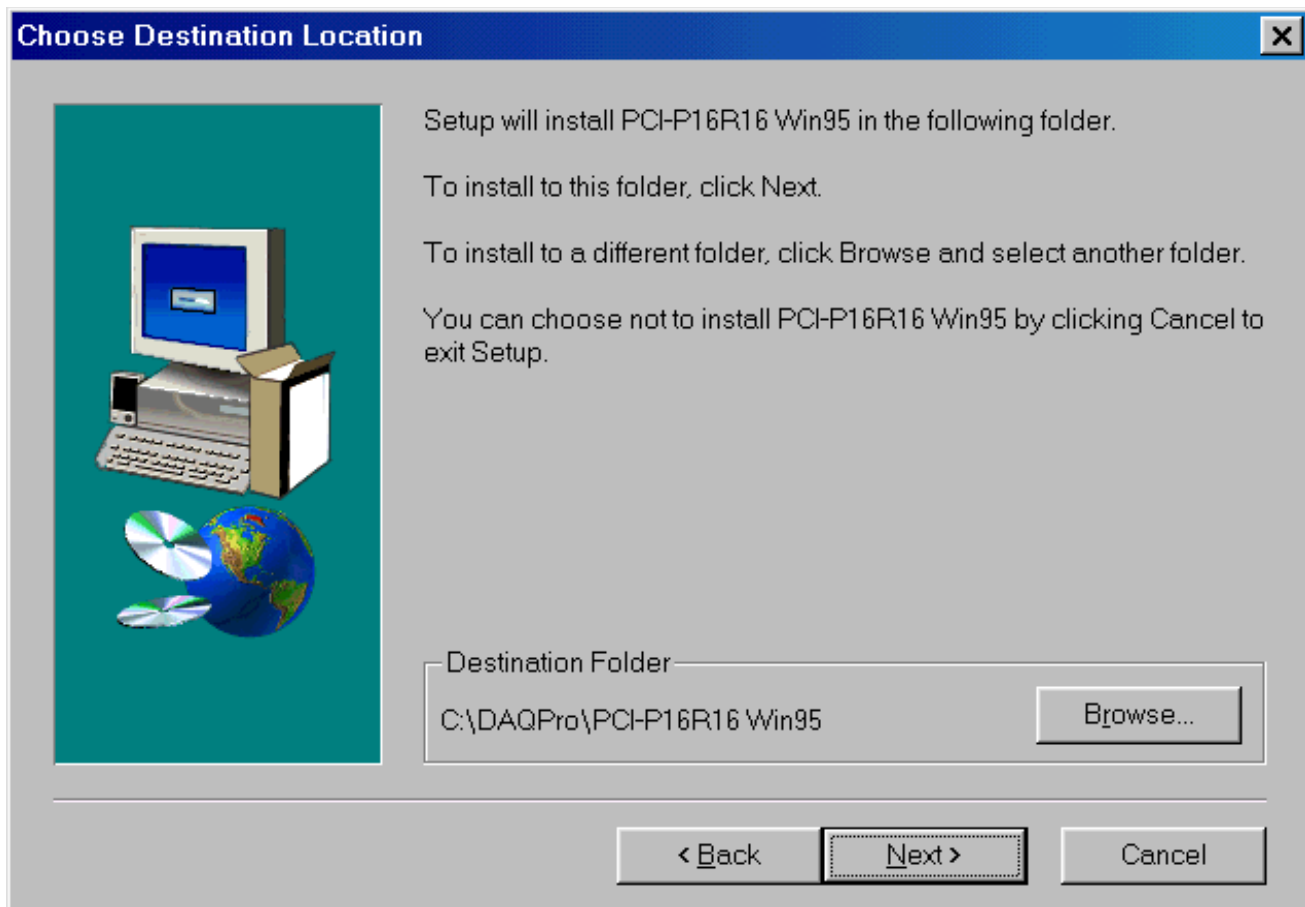


Figure 3. Click “Browse...” to change the folder that the user wants to installed and then clicks button “Next>”. This folder will contain the software of PCI-P16R16/P8R8.

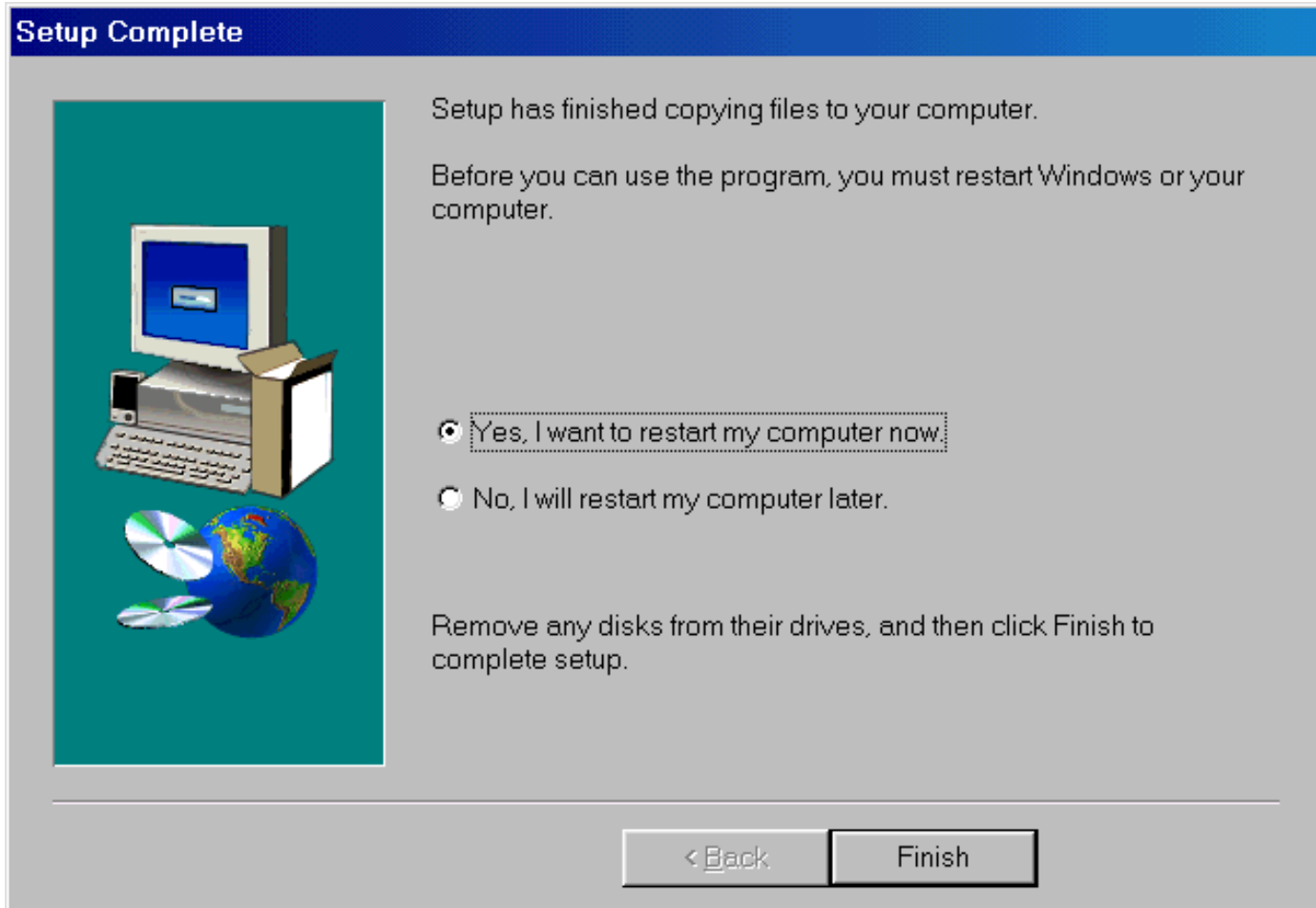


Figure 4. Select the item “Yes” and click the button “Finish” to restart the user’s system.

The END