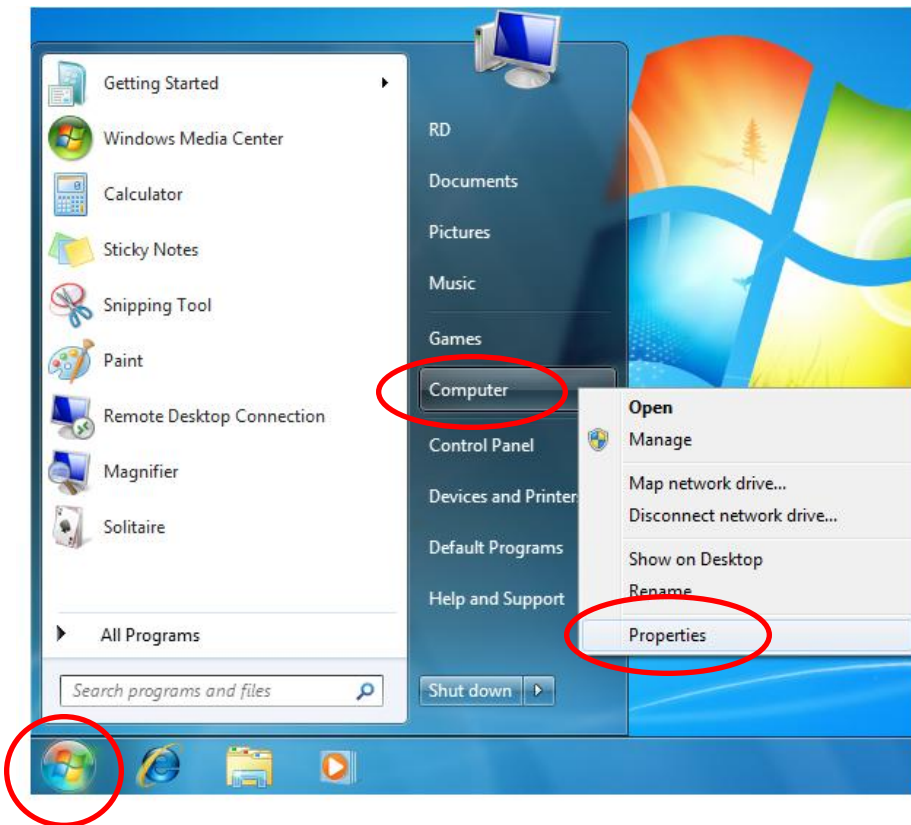


分類/Classification	<input type="checkbox"/> tDS	<input type="checkbox"/> tGW	<input type="checkbox"/> PETL/tET/tPET	<input type="checkbox"/> DS/PDS/PPDS	<input type="checkbox"/> tM-752N
	<input checked="" type="checkbox"/> I/O Card	<input type="checkbox"/> VXC Card	<input type="checkbox"/> VxComm	<input type="checkbox"/> Other	
作者/Author	Albert	日期/Date	2015-04-02	編號/No.	FAQ-024

Q : How do I enable the Memory Dump function during a System Crash?

A : The following is a description of how to enable the Memory Dump feature so that a "minidump" file will be generated during a system crash (also known as a BSOD), If a failure occurs, this file should be returned to ICPDAS for analysis of any possible problems.

Step 1:




1. Click the "Start" button.
2. Right-click "Computer" and then select the "Properties" option from the shortcut menu.

Step 2:

Windows edition

Windows 7 Ultimate
Copyright © 2009 Microsoft Corporation. All rights reserved.

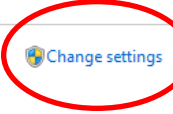


System

Rating: System rating is not available
Processor: Pentium(R) Dual-Core CPU E5300 @ 2.60GHz 2.60 GHz
Installed memory (RAM): 1.00 GB
System type: 64-bit Operating System
Pen and Touch: No Pen or Touch Input is available for this Display

Computer name, domain, and workgroup settings

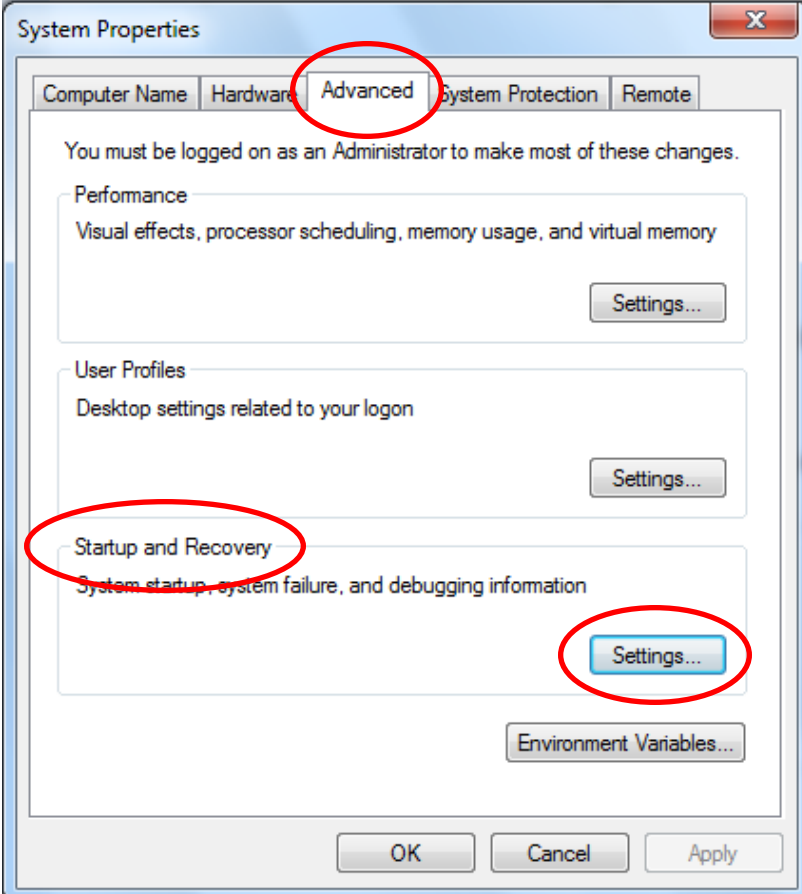
Computer name: RD-PC
Full computer name: RD-PC
Computer description:



1. Click the "Change Settings" link. Be aware that Administrator privileges are required in order to perform this operation.

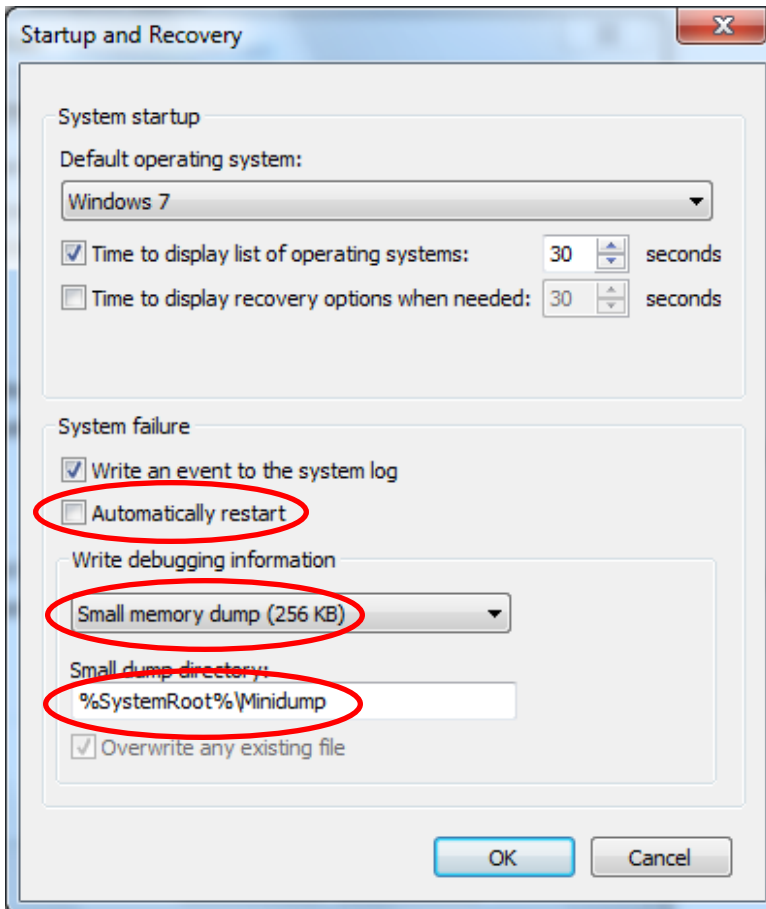
(Note that some operating systems, Windows XP for example, do not include this option, so it can be skipped in those cases.)

Step 3 :



The screenshot shows the "System Properties" dialog box with the "Advanced" tab selected. The "Advanced" tab is circled in red. The "Startup and Recovery" section is also circled in red, and its "Settings..." button is circled in red. The "Performance" and "User Profiles" sections are visible but not circled. The "OK", "Cancel", and "Apply" buttons are at the bottom.

1. In the "System Properties" dialog box, click the "Advanced" tab, and then click the "Settings" button in the "Startup and Recovery" group.

Step 4 :

1. In the "Startup and Recovery" dialog box, uncheck the "Automatically restart" option in the "System failure" group.
2. Select the "Small memory dump" option from the "Write debugging information" drop-down menu. ◦
3. Click the "OK" button to complete the process.

After the configuration is complete, the failure information will be stored in a log file in the "%SystemRoot%\Minidump" folder following a system crash. This file should be forwarded to ICPDAS for analysis.