



# 快速入門指南

## VXC-114U/144U/144iU

作者 Tammy Chuang

版本 1.025

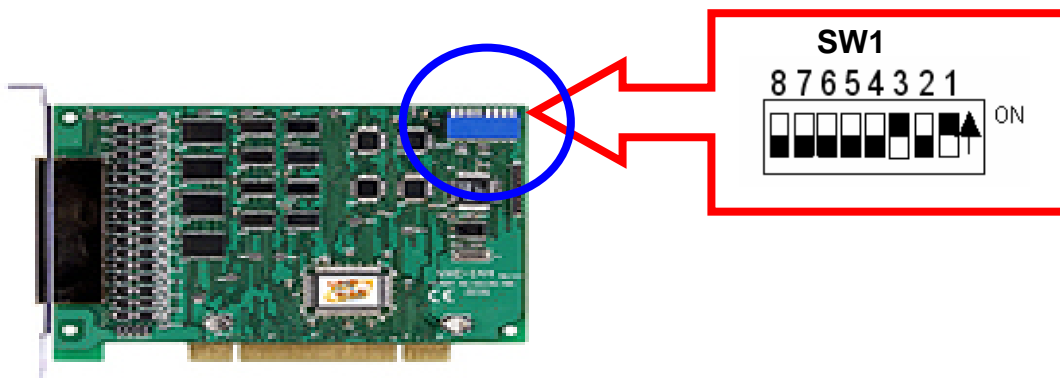
2007 年 12 月

# 1 您的產品包含那些配備?

1. 一張 VXC 系列板卡
2. 一張安裝軟體光碟
3. 一張快速入門指南 ( 本文件 )

# 2 COM Port 設定

請調整 SW1 (COM 選擇) 為 0x05 (1 和 3 "ON", 其它 "OFF").  
這是設定 VXC card 使用 COM5, COM6, COM7 , COM8.



## SW1 設定表

SW1 DIP Switch	8	7	6	5	4	3	2	1
Board ID= <b>0x00</b> (Default) COM = Auto-defined	OFF	OFF	OFF	OFF	OFF	OFF	OFF	OFF
Board ID= <b>0x03</b> COM = 3/4/5/6	OFF	OFF	OFF	OFF	OFF	OFF	ON	ON
Board ID= <b>0x05</b> COM = 5/6/7/8	OFF	OFF	OFF	OFF	OFF	ON	OFF	ON
Board ID= <b>0x07</b> COM = 7/8/9/10	OFF	OFF	OFF	OFF	OFF	ON	ON	ON
Board ID= <b>0x09</b> COM = 9/10/11/12	OFF	OFF	OFF	OFF	ON	OFF	OFF	ON
Board ID= <b>0x14</b> COM = 20/21/22/23	OFF	OFF	OFF	ON	OFF	ON	OFF	OFF
Board ID= <b>0x1E</b> COM = 30/31/32/33	OFF	OFF	OFF	ON	ON	ON	ON	OFF
Board ID= <b>0x28</b> COM = 40/41/42/43	OFF	OFF	ON	OFF	ON	OFF	OFF	OFF
Board ID= <b>0x32</b> COM = 50/51/52/53	OFF	OFF	ON	ON	OFF	OFF	ON	OFF
Board ID= <b>0x3C</b> COM = 60/61/62/63	OFF	OFF	ON	ON	ON	ON	OFF	OFF
Board ID= <b>0x64</b> COM = 100/101/102/103	OFF	ON	ON	OFF	OFF	ON	OFF	OFF
Board ID= <b>0x96</b> COM = 150/151/152/153	ON	OFF	OFF	ON	OFF	ON	ON	OFF
Board ID= <b>0xC8</b> COM = 200/201/202/203	ON	ON	OFF	OFF	ON	OFF	OFF	OFF
.								
.								
.								
Board ID= <b>0xFF</b> COM = 255/256/x/x	ON	ON	ON	ON	ON	ON	ON	ON

# 3 安裝 Windows 驅動程式

1. 開始Windows NT/2K/XP/2003/Vista32驅動程式安裝.

驅動程式位置：

CD:\Napdos\multiport\windows\

<http://ftp.icpdas.com/pub/cd/iocard/pci/napdos/multiport/windows/>

2. 按 “**Next>**” 按鈕 開始安裝.
3. 按 “**Next>**” 按鈕, 或選擇不同的安裝路徑, 再按 “**Next>**” 繼續.
4. 勾選 “**Create a desktop icon**”, 並按 “**Next>**” 按鈕.
5. 選擇 “**No, I will restart the computer later**”, 並按 “**Finish**” 按鈕.

其它作業系統，請參閱電子檔手冊：

CD:\Napdos/multiport/manual/vxc\_114u\_144u\_144iu\_manual.pdf

[http://ftp.icpdas.com/pub/cd/iocard/pci/napdos/multiport/manual/vxc\\_114u\\_144u\\_144iu\\_manual.pdf](http://ftp.icpdas.com/pub/cd/iocard/pci/napdos/multiport/manual/vxc_114u_144u_144iu_manual.pdf)

# 4 安裝您的硬體

1. 關掉電腦電源
2. 打開電腦機殼
3. 選擇未使用的 **PCI** 插槽
4. 小心插入 VXC Card 到 PCI 插槽中，  
並以螺絲固定住
5. 將電腦機殼裝回
6. 打開電腦電源

進入 Windows 後，Plug & Play 會自動繼續安裝, 請依下面步驟確認 VXC Card 已正確安裝

1. 選擇 “開始/ 設定/ 控制台”，點二下 “系統” 圖示。
2. 點選 “硬體” 標籤，再點選裡面的 “裝置管理員” 按鈕。
3. 查看 VXC Card 的 COM Ports 是否有正確列出。



# 5 腳位的定義

## VXC-114U 腳位定義和接線

Pin Assignment	Terminal No.	Pin Assignment	
N.C.	01	20	RI3
DCD3	02	21	DTR3
GND	03	22	DSR3
CTS3	04	23	RTS3
RxD3	05	24	TxD3
RI4	06	25	DCD4
DTR4	07	26	GND
DSR4	08	27	CTS4
RTS4	09	28	RxD4
TxD4	10	29	RI2
DCD2	11	30	DTR2
GND	12	31	DSR2
CTS2	13	32	RTS2
RxD2	14	33	TxD2
RI1	15	34	DCD1
DTR1	16	35	GND
DSR1	17	36	CTS1
RTS1	18	37	RxD1
TxD1	19		

RS-232 Null Modem Cable Wiring

System 1		System 2
TX	→	RX
RX	←	TX
RTS	→	DCD
CTS	→	
GND	↔	GND
DSR	←	DTR
DCD	←	RTS
		CTS
DTR	→	DSR

## VXC-144U/144iU 腳位定義和接線

Pin Assignment	Terminal No.		Pin Assignment
N.C.	01	20	CTS3-(A)
TxD3-(A)/Data3-(A)	02	21	RxD3-(A)
GND/VEE3	03	22	RTS3-(A)
CTS3+(B)	04	23	RTS3+(B)
TxD3+(B)/Data3+(B)	05	24	RxD3+(B)
CTS4-(A)	06	25	TxD4-(A)/Data4-(A)
RxD4-(A)	07	26	GND/VEE4
RTS4-(A)	08	27	CTS4+(B)
RTS+4(B)	09	28	TxD4+(B)/Data4+(B)
RxD4+(B)	10	29	CTS2-(A)
TxD2-(A)/Data2-(A)	11	30	RxD2-(A)
GND/VEE2	12	31	RTS2-(A)
CTS2+(B)	13	32	RTS2+(B)
TxD2+(B)/Data2-(B)	14	33	RxD2+(B)
CTS1-(A)	15	34	TxD0-(A)/Data1-(A)
RxD1-(A)	16	35	GND/VEE1
RTS1-(A)	17	36	CTS1+(B)
RTS1+(B)	18	37	TxD1+(B)/Data1+(B)
RxD1+(B)	19		

### RS-485 Cable Wiring

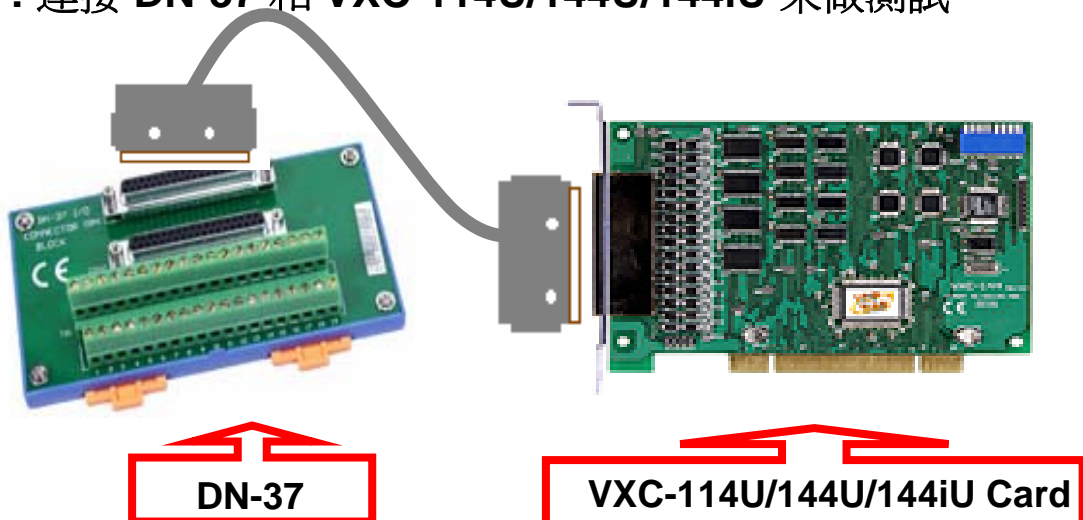
System 1		System 2
DATA - (A)	↔	DATA - (A)
DATA + (B)	↔	DATA + (B)

### RS-422 Cable Wiring

System 1		System 2
TxD-	→	RxD-
TxD+	→	RxD+
RxD+	←	TxD+
RxD-	←	TxD-
GND	↔	GND
RTS-	→	CTS-
RTS+	→	CTS+
CTS+	←	RTS+
CTS-	←	RTS-

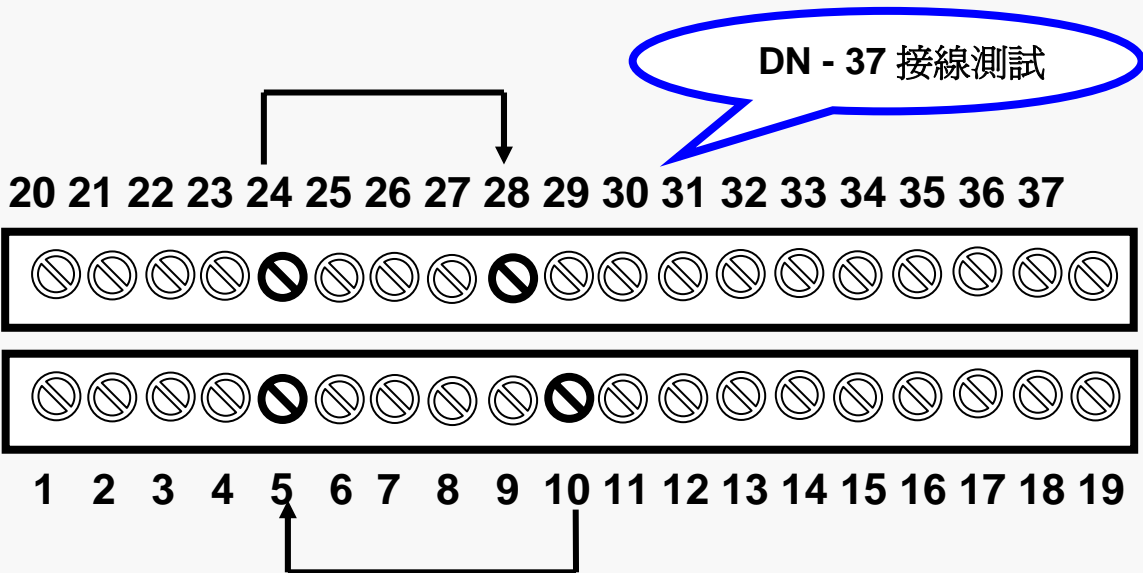
# 6 自我測試

1 : 連接 DN-37 和 VXC-114U/144U/144iU 來做測試



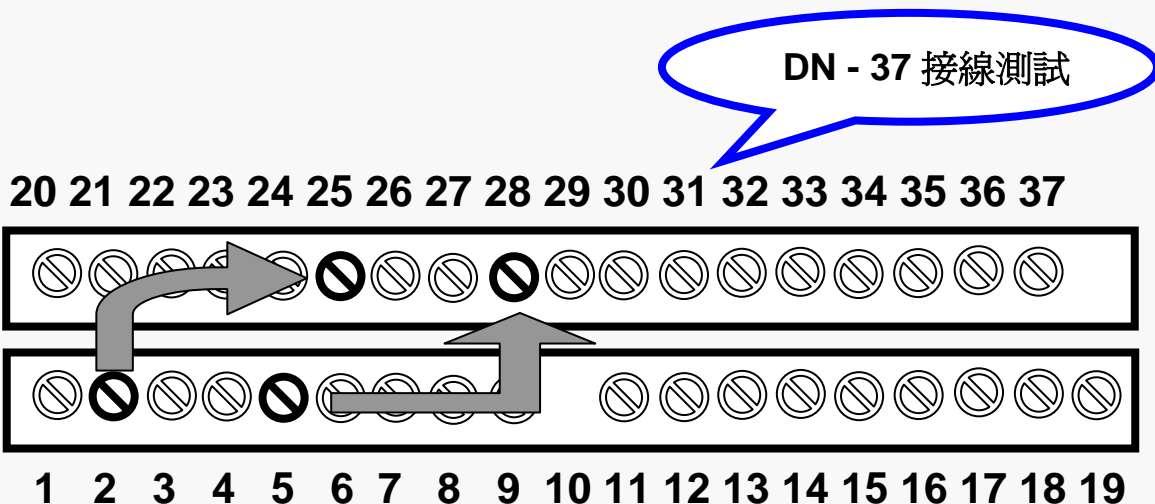
## 2 : VXC-114U (RS-232) 的Port3、Port4 接線

Pin Assignment Name	Pin NO.		Pin NO.	Pin Assignment Name
TxD3	24	↔	28	RxD4
RxD3	05	↔	10	TxD4



## VXC-144U/144iU (RS-485) 的Port3、Port4 接線

Pin Assignment Name	Pin NO.		Pin NO.	Pin Assignment Name
TxD3-(A)/Data3-(A)	02	↔	25	TxD4-(A)/Data4-(A)
TxD3+(B)/Data3+(B)	05	↔	28	TxD4+(B)/Data4+(B)



### 3 : 執行 Test2COM.exe 程式

Test2COM.exe 下載的位置 :

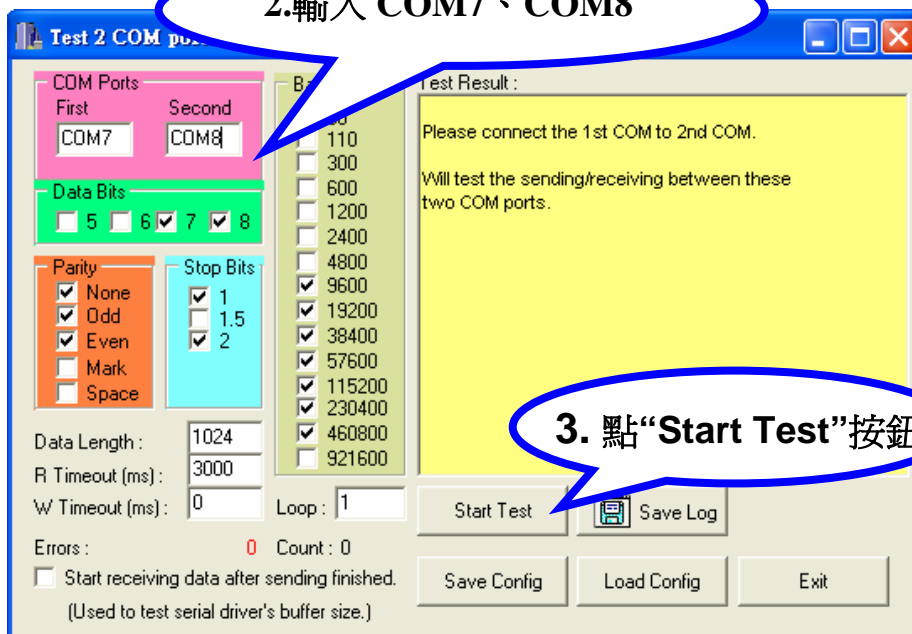
CD:\Napedos\multiport\utility\

<http://ftp.icpdas.com/pub/cd/iocard/pci/napedos/multiport/utility/>



1. 雙擊 Test2COM.exe

2. 輸入 COM7、COM8

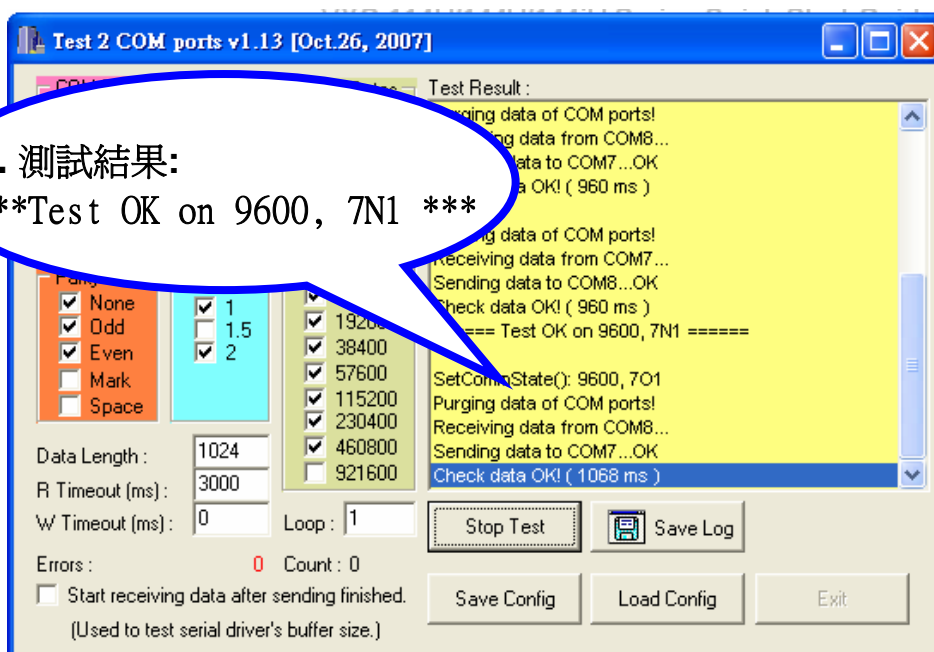


3. 點“Start Test”按鈕

### 4 : 測試成功.

4. 測試結果:

\*\*\*Test OK on 9600, 7N1 \*\*\*



## 參考資訊

VXC Card 產品網頁:

[http://www.icpdas.com/products/Industrial/multi\\_serial/vxc-144.htm](http://www.icpdas.com/products/Industrial/multi_serial/vxc-144.htm)

文件位置:

CD:\Napdos\multiport>manual\

<http://ftp.icpdas.com/pub/cd/iocard/pci/napdos/multiport/manual/>

軟體位置:

CD:\Napdos\multiport\

<http://ftp.icpdas.com/pub/cd/iocard/pci/napdos/multiport/>

DN-37 延伸子板 網頁:

[http://www.icpdas.com/products/DAQ/screw\\_terminal/dn\\_37.htm](http://www.icpdas.com/products/DAQ/screw_terminal/dn_37.htm)

泓格科技(ICP DAS) 網址

<http://www.icpdas.com>

- 專業技術支援
- 代理商以及訂購資訊
- 增強設備功能的相關資訊
- 常見問題
- 應用案例



聯繫我們:

[Service@icpdas.com](mailto:Service@icpdas.com)

Copyright © 2007 by ICP DAS Co., Ltd. All rights are reserved